

OFFICE SPACE FOR LEASE

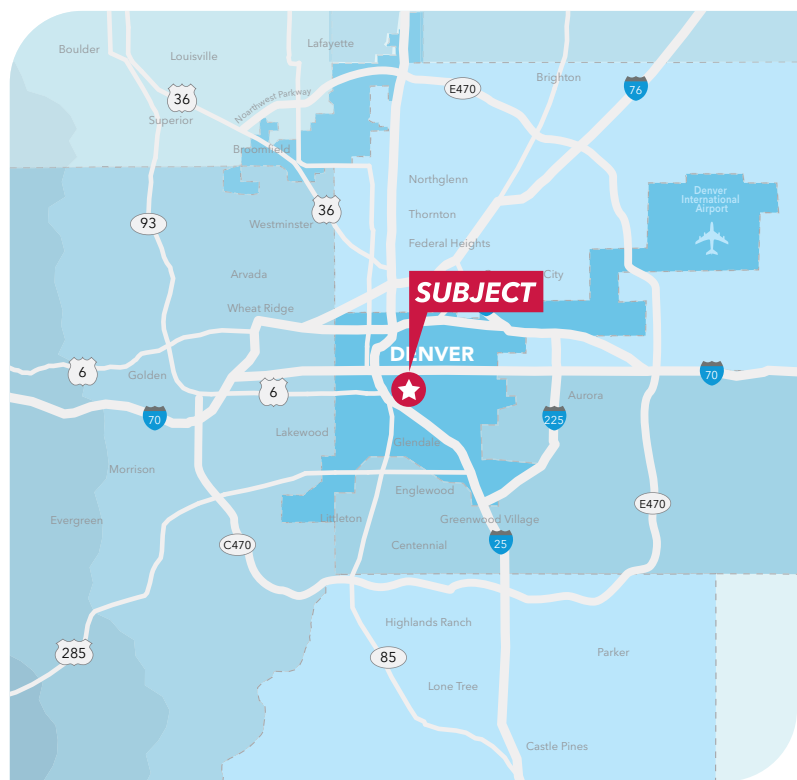
455 SHERMAN STREET

DENVER, COLORADO 80203



PROPERTY OVERVIEW

SIZE	± 117,305
YEAR BUILT / RENOVATED	1983 / 2008
BUILDING CLASS	A
NUMBER OF FLOORS	5
PARKING COSTS	\$105/Month covered, reserved \$85/Month surface, reserved
PARKING RATIO	1 : 384 SF
STARTING LEASE RATE	\$26.50/SF Full Service Gross



JR BITZER

303 501 8778

jrbitzer@lee-associates.com

OFFICE SPACE FOR LEASE

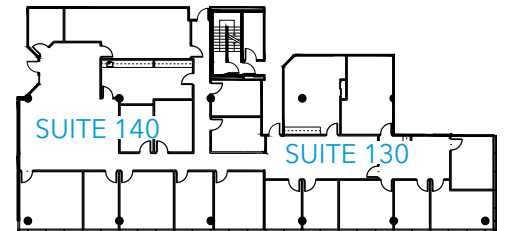
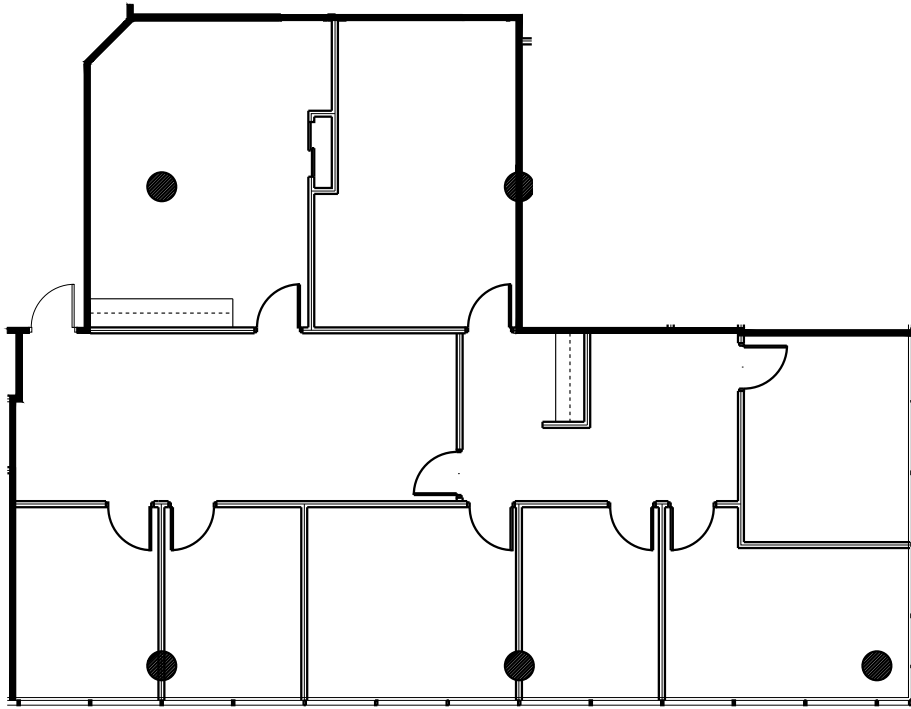
455 SHERMAN STREET

DENVER, COLORADO 80203

SUITE 130
±2,720 RSF

AVAILABLE NOW

CONTIGUOUS WITH SUITE 140



SUITE	SIZE	LAYOUT	AVAILABILITY
130	±2,720 RSF	6 exterior offices, 1 conference room, reception/lobby area, access to restrooms, elevator and stairs	Available Now

JR BITZER

303 501 8778
jrbitzer@lee-associates.com

OFFICE SPACE FOR LEASE

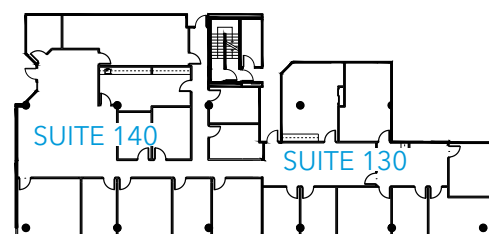
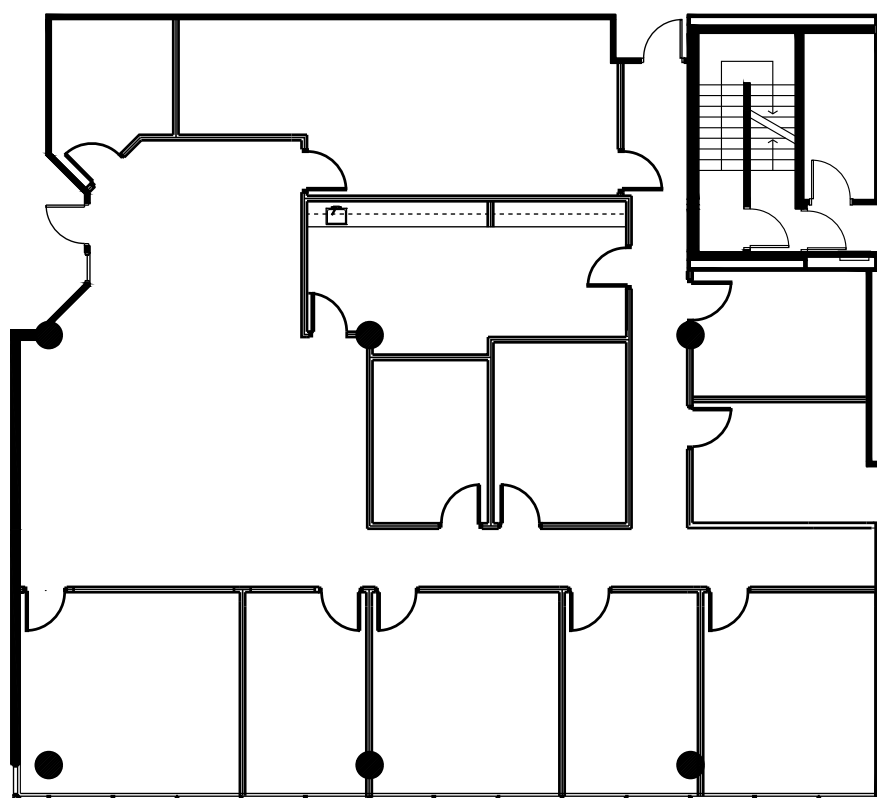
455 SHERMAN STREET

DENVER, COLORADO 80203

SUITE 140
±4,382 RSF

CONTIGUOUS WITH SUITE 130

AVAILABLE WITH
60 DAYS NOTICE



SUITE	SIZE	LAYOUT	AVAILABILITY
140	±4,382 RSF	10 offices (5 exterior) 1 conference room, reception/lobby area, kitchen/break room, access to restrooms, elevator and stairs	Available With 60 Days Notice

JR BITZER

303 501 8778

jrbitzer@lee-associates.com

OFFICE SPACE FOR LEASE

455 SHERMAN STREET

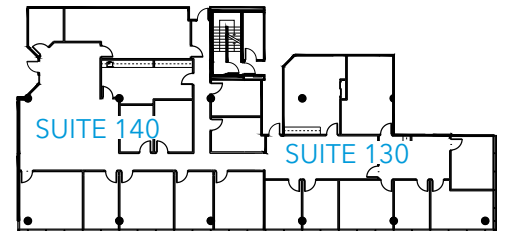
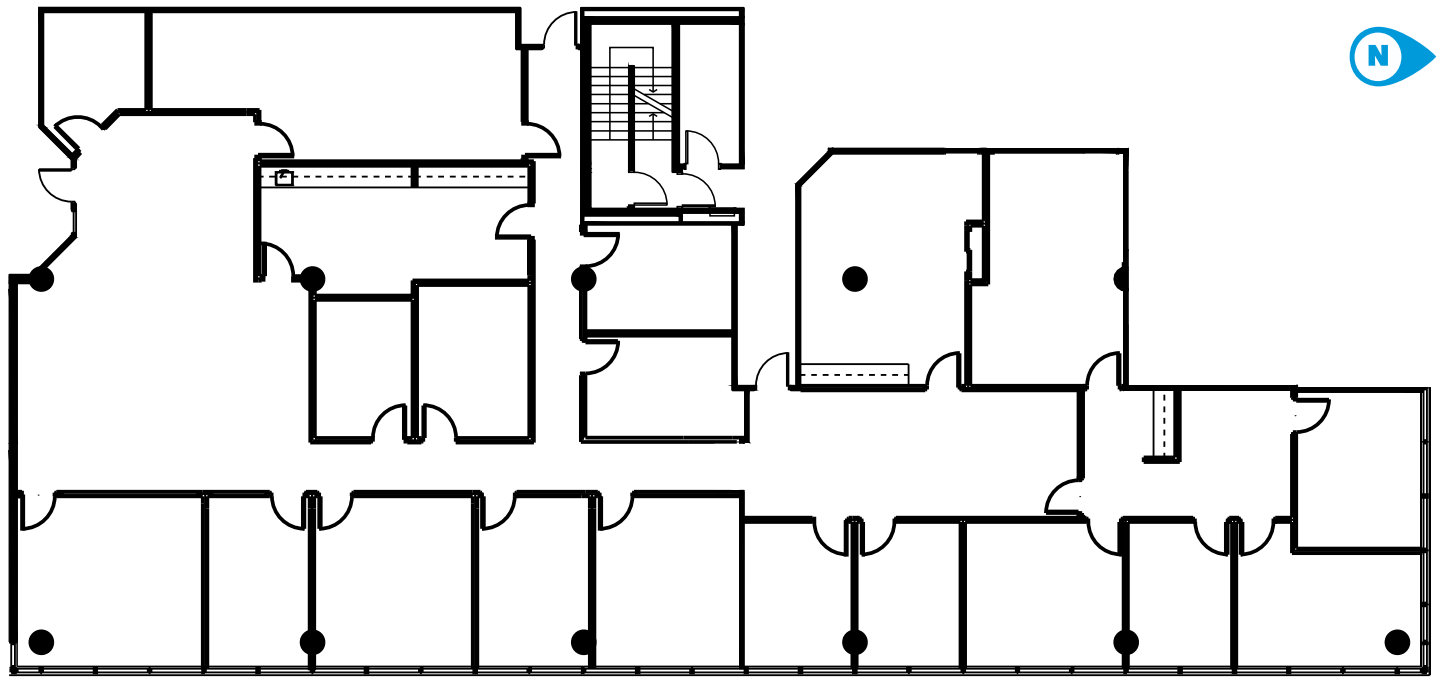
DENVER, COLORADO 80203

SUITE 130 & 140

±7,102 RSF

CONTIGUOUS SPACE

AVAILABLE WITH
60 DAYS NOTICE



SUITE	SIZE	LAYOUT	AVAILABILITY
130 & 140	±7,102 RSF	16 offices (11 exterior) 2 conference rooms, reception/lobby area, kitchen/break room, access to restrooms, elevator and stairs	Available With 60 Days Notice

JR BITZER

303 501 8778

jrbitzer@lee-associates.com

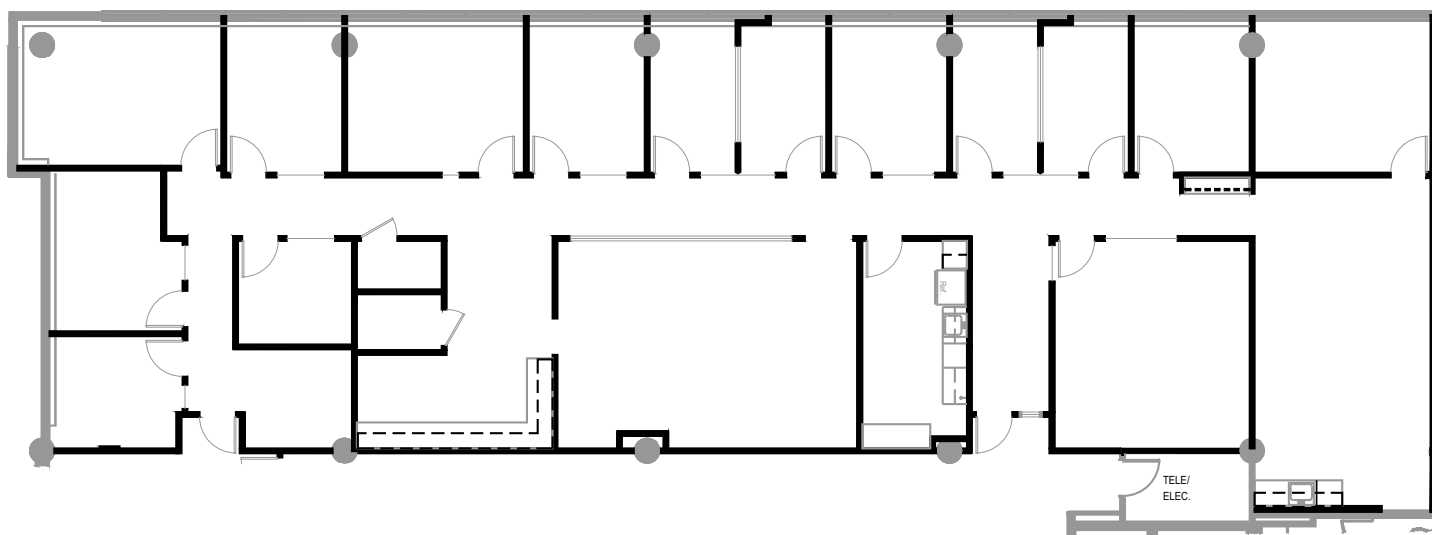
OFFICE SPACE FOR LEASE

455 SHERMAN STREET

DENVER, COLORADO 80203

SUITE 210
±4,843 RSF

AVAILABLE
Q4 2026



SUITE	SIZE	LAYOUT	AVAILABILITY
210	±4,834 RSF	14 offices (11 on glass), 2 conference rooms, reception area, kitchen & break area, open workstation area, copy center area, storage rooms. access to restrooms, elevators and stairs	Available Q4 2026

JR BITZER

303 501 8778

jrbitzer@lee-associates.com

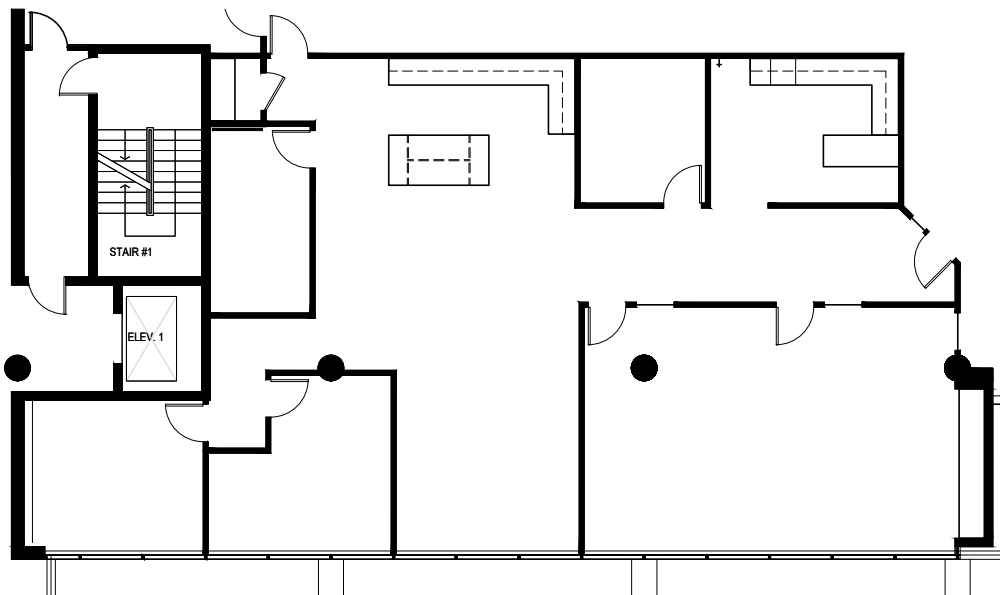
OFFICE SPACE FOR LEASE

455 SHERMAN STREET

DENVER, COLORADO 80203

SUITE 250
±2,965 RSF

AVAILABLE
Q4 2026



SUITE	SIZE	LAYOUT	AVAILABILITY
250	±2,965 RSF	4 offices, 1 conference room, reception area, kitchen & break area, open workstation area, access to restrooms, elevator and stairs	Available Q4 2026

JR BITZER

303 501 8778
jrbitzer@lee-associates.com

OFFICE SPACE FOR LEASE

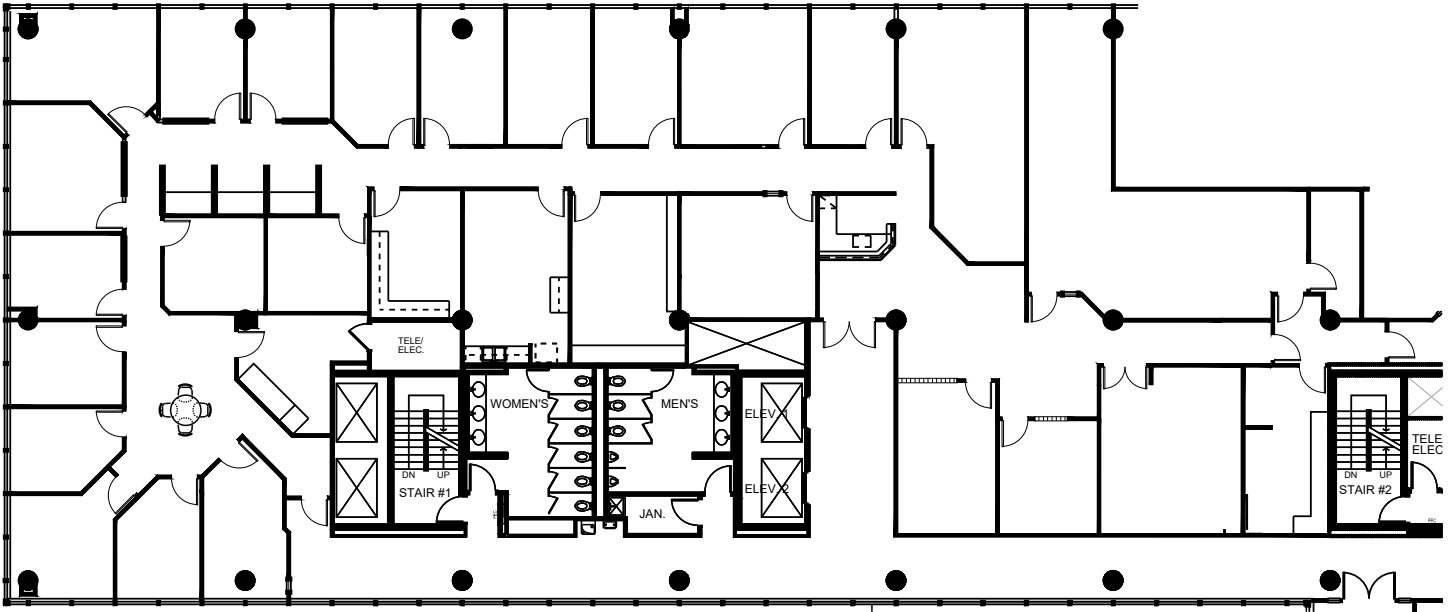
455 SHERMAN STREET

DENVER, COLORADO 80203



SUITE 500
±9,027 RSF

AVAILABLE
Q4 2026



SUITE	SIZE	LAYOUT	AVAILABILITY
500	±9,027 SF	Office intensive buildout with all offices on glass	Available Q4 2026

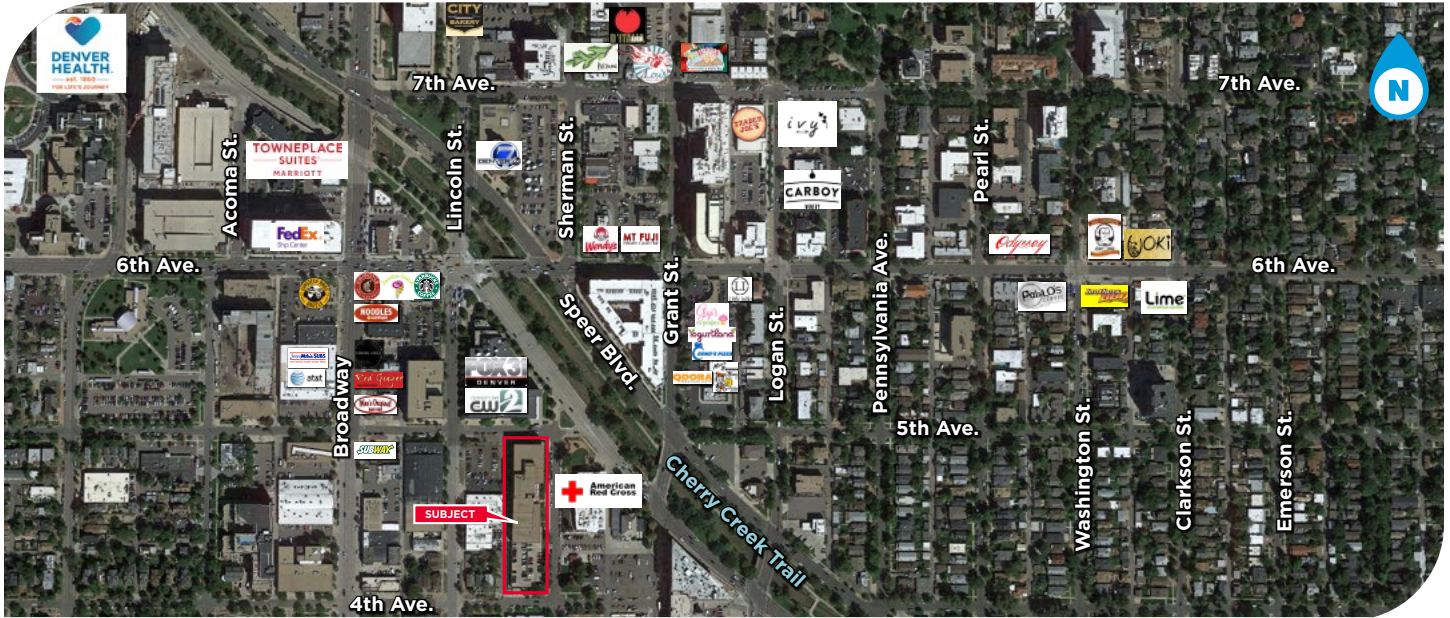
JR BITZER

303 501 8778

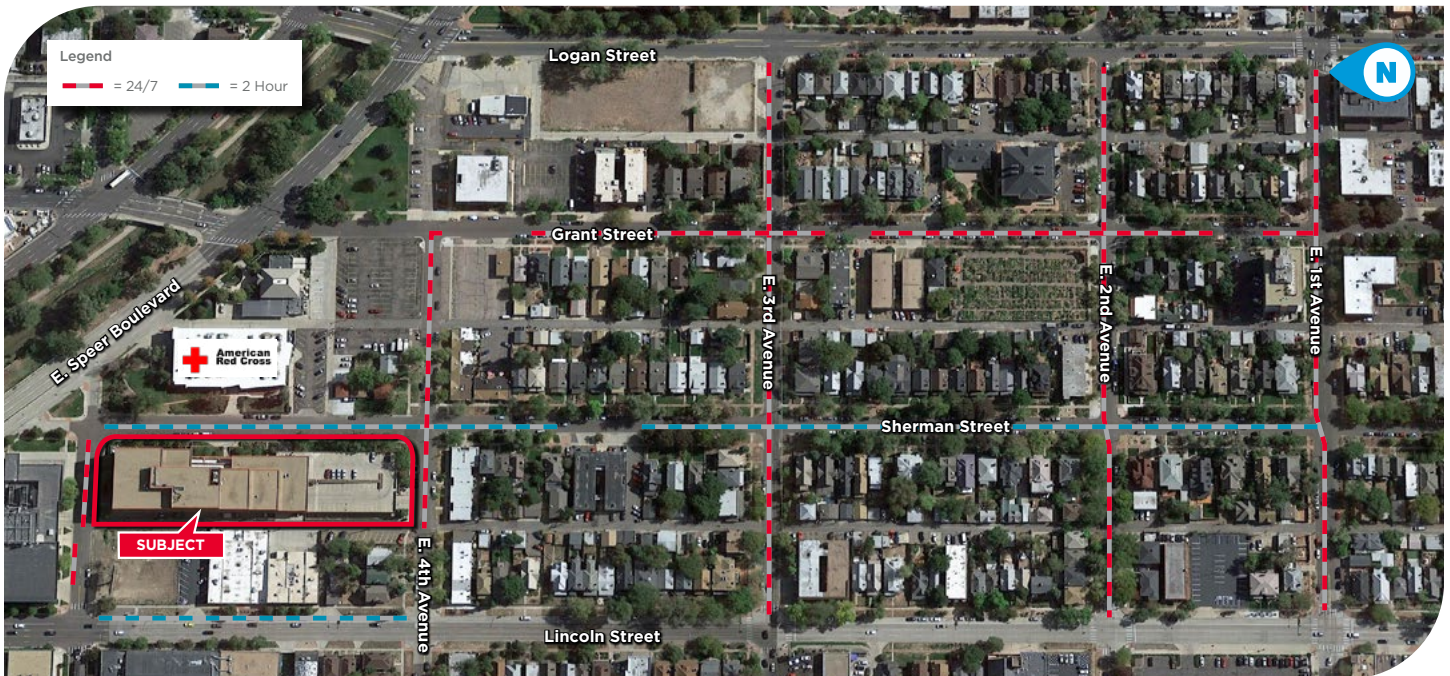
jrbitzer@lee-associates.com

OFFICE SPACE FOR LEASE
455 SHERMAN STREET
DENVER, COLORADO 80203

AERIAL



STREET PARKING OPTIONS



JR BITZER
303 501 8778
jrbitzer@lee-associates.com

OFFICE SPACE FOR LEASE

455 SHERMAN STREET

DENVER, COLORADO 80203

PROPERTY PHOTOS



JR BITZER

303 501 8778

jrbitzer@lee-associates.com

455 SHERMAN STREET

NEARBY AMENITIES & DRIVE TIMES



TRANSIT TIMES

TO COLORADO STATE CAPITOL
FROM 455 SHERMAN STREET

 6 Minutes by Car

 12 Minutes by Bicycle

 14 Minutes by Bus

 27 Minutes by Walking

JR BITZER

303 501 8778

jrbitzer@lee-associates.com