

212 N. Wiget Lane | Walnut Creek, CA

Colliers

For Sale | ± 1,379 SF

Owner - User Office or  
Medical Condominium

*Sale Price: \$827,400*

## Contact Brokers

---

### **Brian Clack**

Senior Vice President  
CA License No. 01416362  
brian.clack@colliers.com  
+1 925 279 4654

### **Eric Erickson, SIOR**

Executive Vice President  
CA License No. 01177336  
eric.erickson@colliers.com  
+1 925 279 5580

### **Colliers**

1850 Mt Diablo Blvd., Suite 200  
Walnut Creek, CA 94596

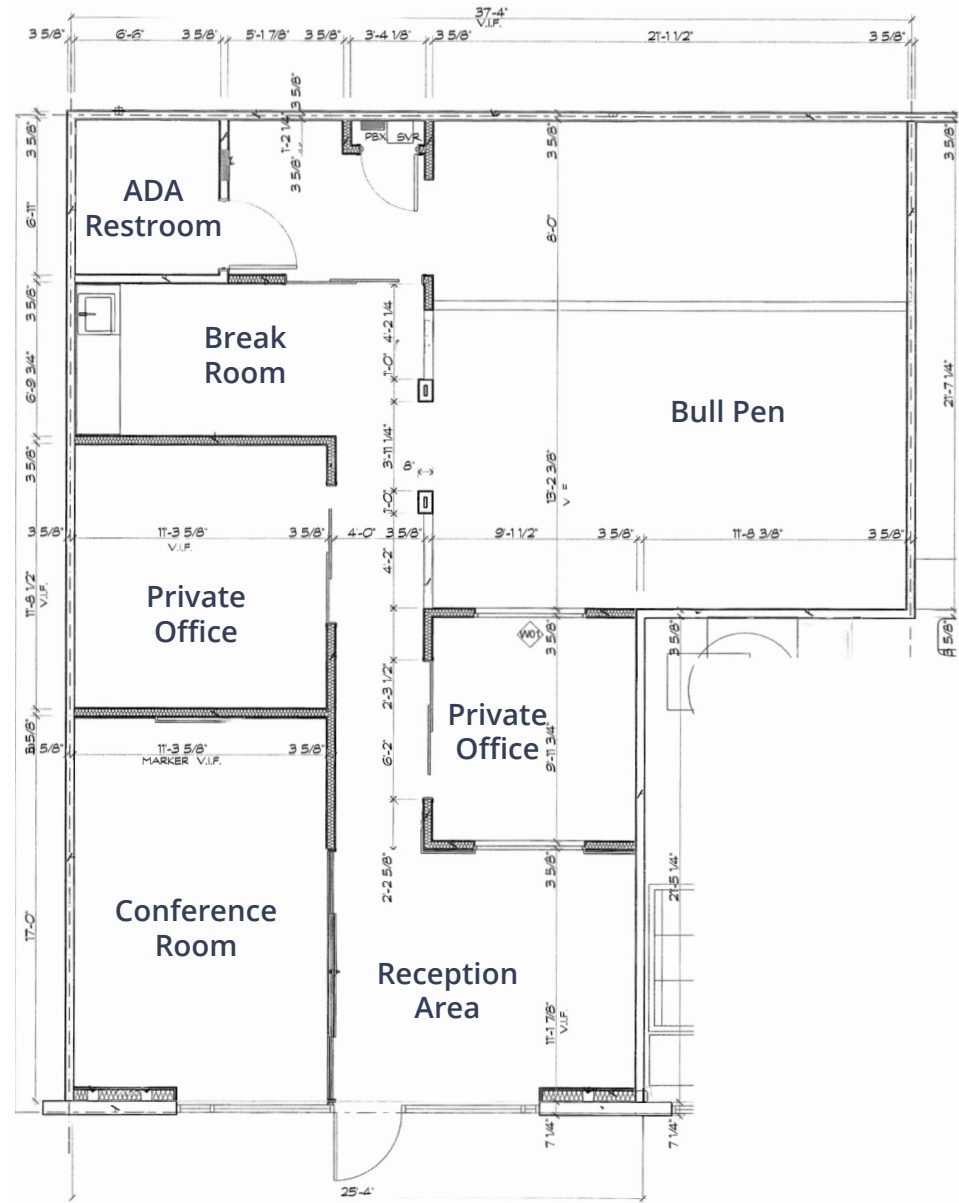


212 N. Wiget Lane | Walnut Creek, CA

# Floor Plan



Video Walk Through »



## Highlights



Sale Price: \$827,400



Available: Now



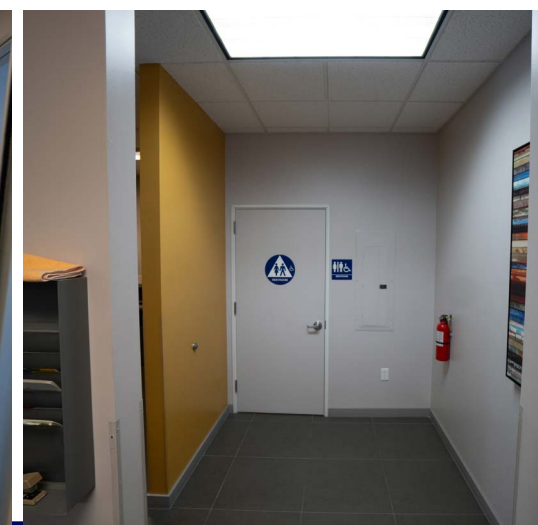
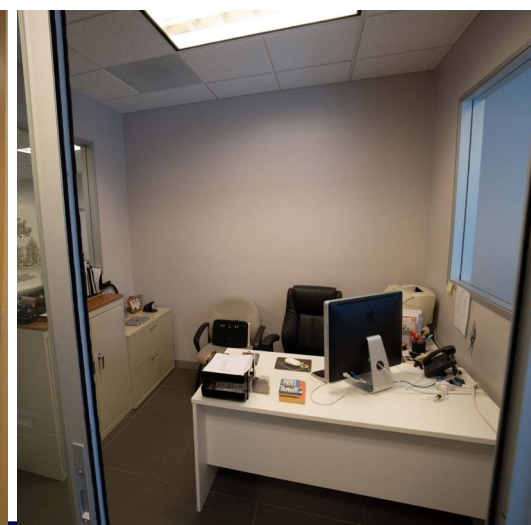
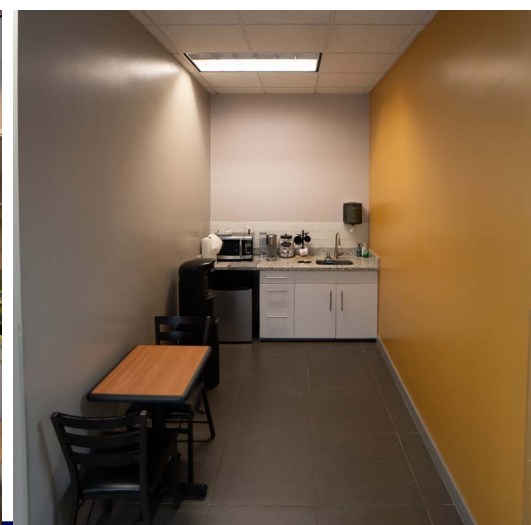
APN: 143-160-031-9



Zoning: Business Park (B-P 100)

212 N. Wiget Lane | Walnut Creek, CA

# Photo Gallery



Contact Brokers

**Brian Clack**

Senior Vice President  
CA License No. 01416362  
brian.clack@colliers.com  
+1 925 279 4654

**Eric Erickson, SIOR**

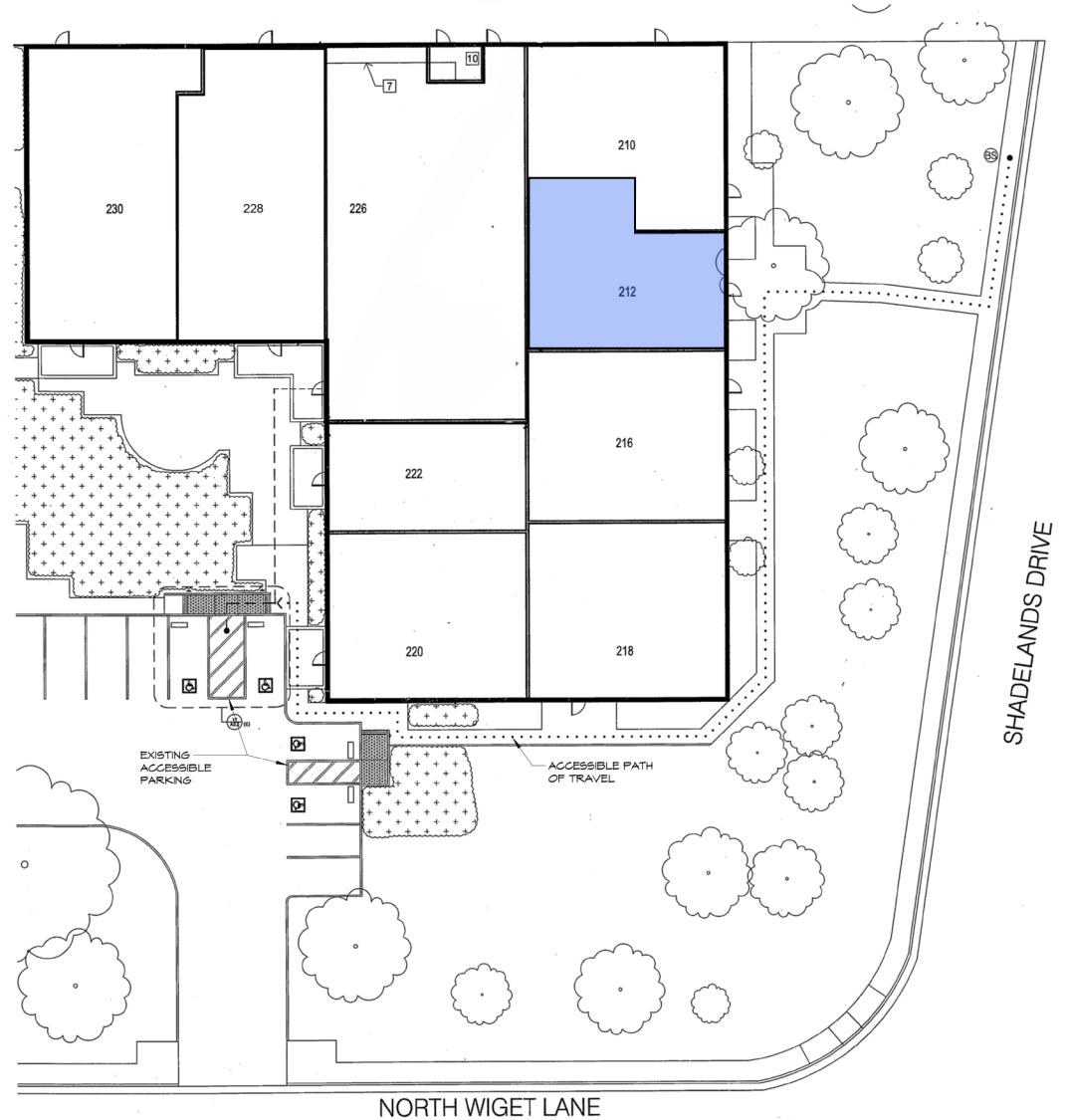
Executive Vice President  
CA License No. 01177336  
eric.erickson@colliers.com  
+1 925 279 5580

**Colliers**

1850 Mt Diablo Blvd., Suite 200  
Walnut Creek, CA 94596

212 N. Wiget Lane | Walnut Creek, CA

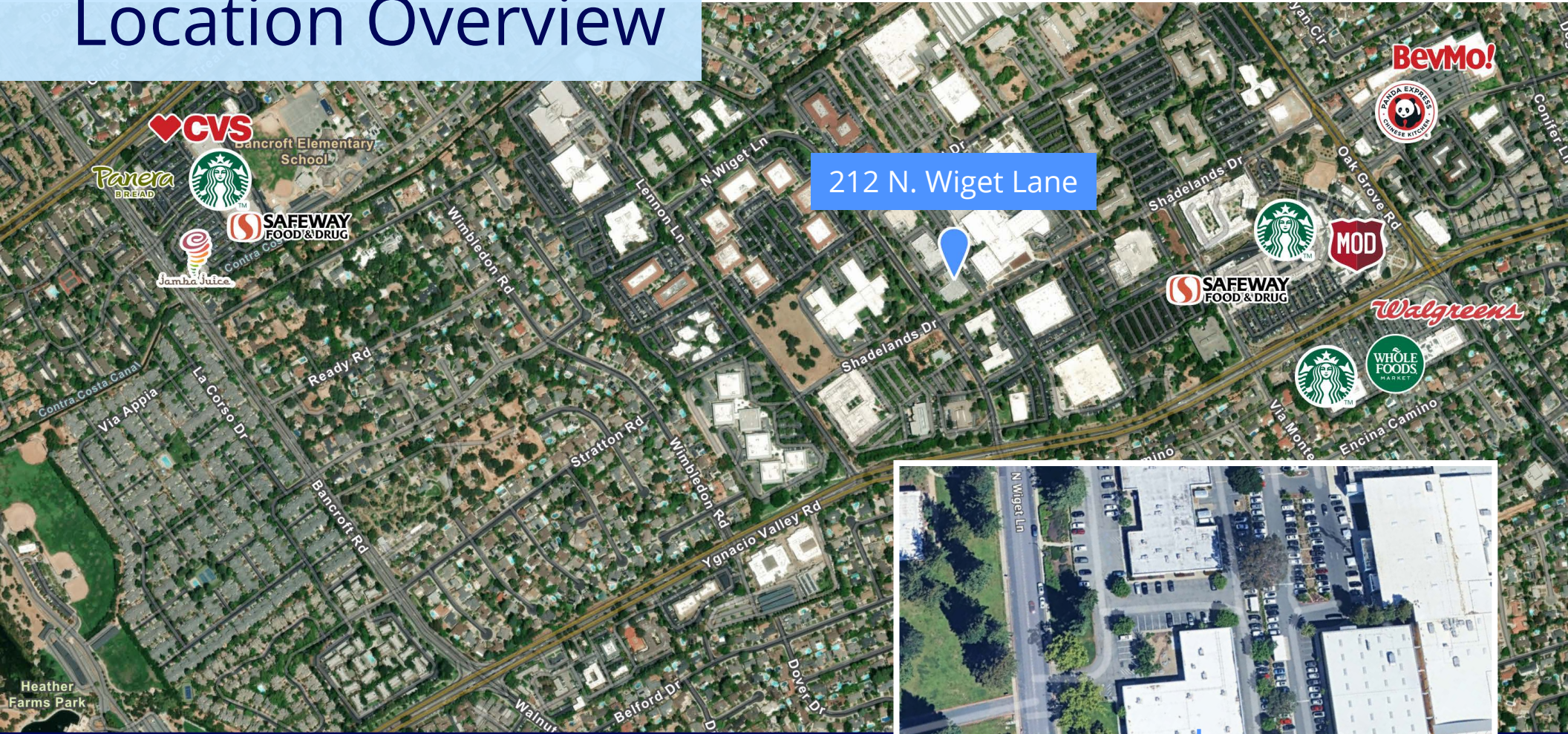
# Site Plan



This document has been prepared by Colliers for advertising and general information only. Colliers makes no guarantees, representations or warranties of any kind, expressed or implied, regarding the information including, but not limited to, warranties of content, accuracy and reliability. Any interested party should undertake their own inquiries as to the accuracy of the information. Colliers excludes unequivocally all inferred or implied terms, conditions and warranties arising out of this document and excludes all liability for loss and damages arising there from. This publication is the copyrighted property of Colliers and /or its licensor(s). © 2026. All rights reserved. This communication is not intended to cause or induce breach of an existing listing agreement.

212 N. Wiget Lane | Walnut Creek, CA

# Location Overview



## Location Highlights



- Located in Walnut Creek
- Near Shadelands Shopping Center and local amenities
- Short drive to downtown Walnut Creek