

Flagship Retail Opportunity



ONE BLOOR EAST



PLANT YOUR FLAG AT YONGE AND BLOOR

We are excited to offer an iconic flagship retail opportunity at the corner of Yonge St & Bloor St, one of Toronto's most prestigious intersections.

AT THE HEART OF OUR CITY

One Bloor East is a mixed-use property featuring three levels of flagship retail space at the base of a 76 storey condo tower, located at the corner of Yonge St and Bloor St.

Anchoring the Bloor-Yorkville neighbourhood in Toronto, One Bloor East is surrounded by notable cafés, restaurants, art galleries and world class retail. It is directly connected to the busiest subway station in the country and is easily accessible no matter the mode of transportation.



DEMOGRAPHICS & NEIGHBOURHOOD

*2022 Statistics

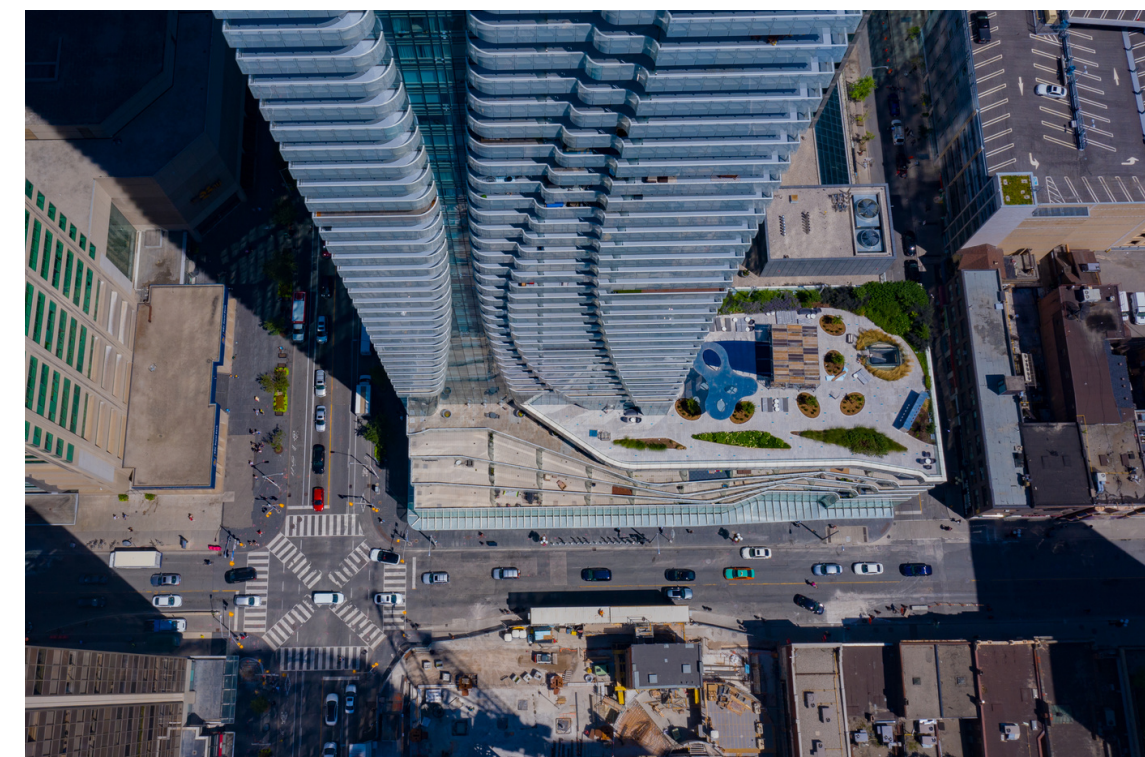
	1km	3km	5km
Household Income	\$160,258	\$158,125	\$148,208
Households	41,227	177,368	375,832
Population	68,809	332,673	745,106
Household Disposable Income	\$109,936	\$110,788	\$105,640

Transit Score 97
Walk Score 100
Bike Score 90

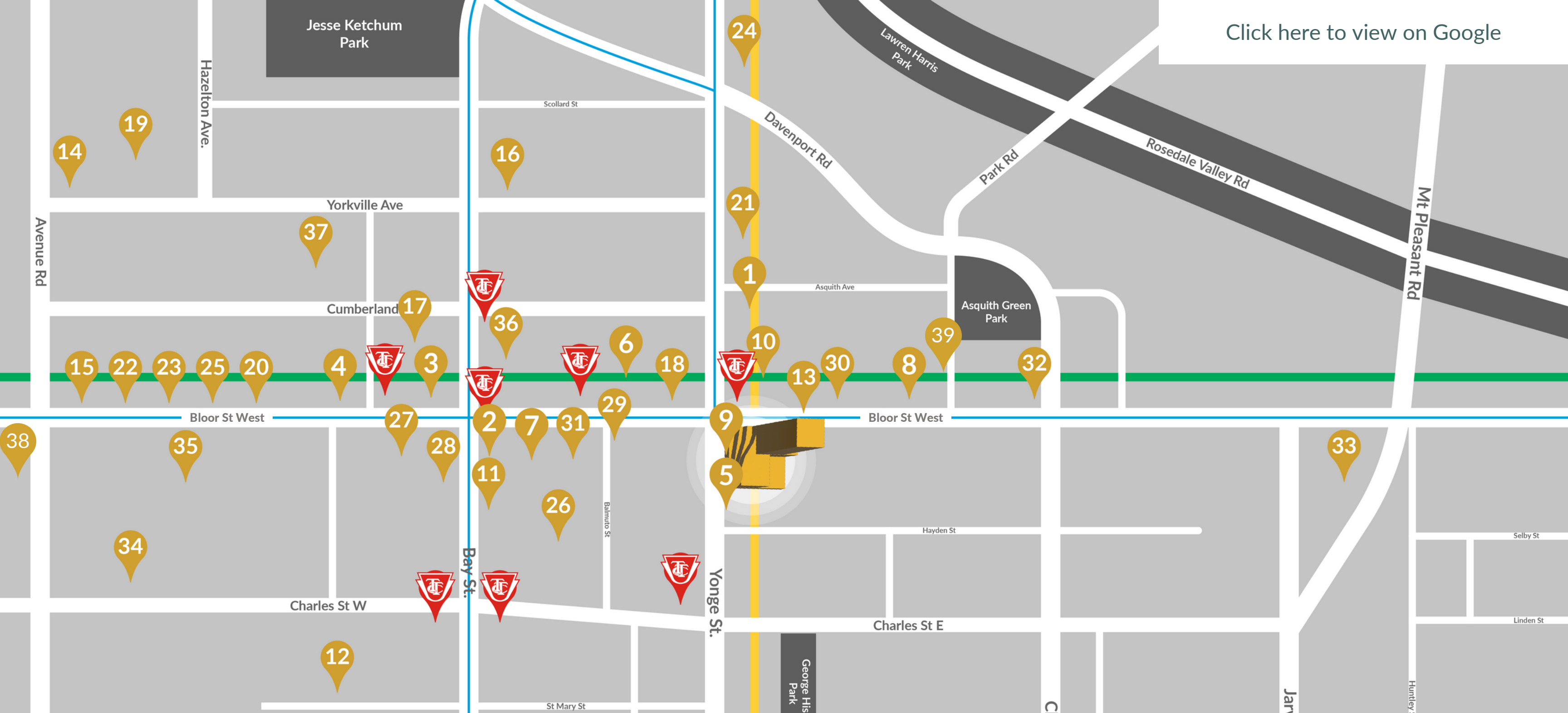
36
Median Age of Neighbourhood
8%
Pop. Growth by 2026
92%
Working Professionals

JOIN A THRIVING RETAIL DESTINATION AT YONGE & BLOOR

DIRECT TTC SUBWAY ACCESS
Serving over 400,000+ people daily



[Click here to view on Google](#)



Notable Retailers in the Neighbourhood

- | | | |
|--|----------------------------|--------------------------|
| 1. Jack Astors | 14. The Hazelton Hotel | 27. Sephora |
| 2. Maison Birks | 15. Louis Vuitton | 28. TD Bank |
| 3. Roots | 16. The Four Seasons Hotel | 29. Scotiabank |
| 4. Hermès | 17. Harry Rosen | 30. RBC Royal Bank |
| 5. Chick-fil-A | 18. Aritzia | 31. Cineplex Cinemas |
| 6. Holt Renfrew | 19. Whole Foods Market | 32. BMO Bank of Montreal |
| 7. Eataly Toronto | 20. Winners & HomeSense | 33. Rogers HQ |
| 8. Shoppers Drug Mart | 21. Toronto Public Library | 34. lululemon |
| 9. One Bloor East | 22. DIOR | 35. Cartier |
| 10. Bloor-Yonge Subway Station | 23. Prada | 36. Planta |
| 11. Indigo | 24. Canadian Tire | 37. Sofia |
| 12. University of St. Michaels College | 25. Tiffany & Co. | 38. Royal Ontario Museum |
| 13. Cafe Landwer | 26. LCBO | 39. W Hotel |

TTC Entrance Bloor-Danforth Subway Line Yonge-University Subway Line Bike Lanes



Barbara Hall Dog Park

Wellesley-Magill Park

Flagship Retail Opportunity

Approximately 40,000 SF

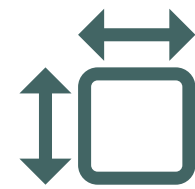
This 2 storey retail space totals approximately 40,000 SF with almost 10,000 SF on the Street Level and 30,000 SF on the Second Level.

The space is located on the hard corner with unparalleled exposure on both Bloor St and Yonge St emphasized by floor to ceiling glazing that wraps the corner.



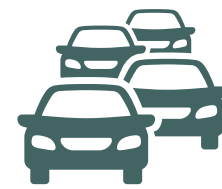
400,000+ people

Yonge-Bloor subway station serves over 400,000 people daily



10 Million SF

Surrounded by nearly 10 million sf of office space



65,000 vehicles

Yonge & Bloor sees on average 65,000 vehicles daily



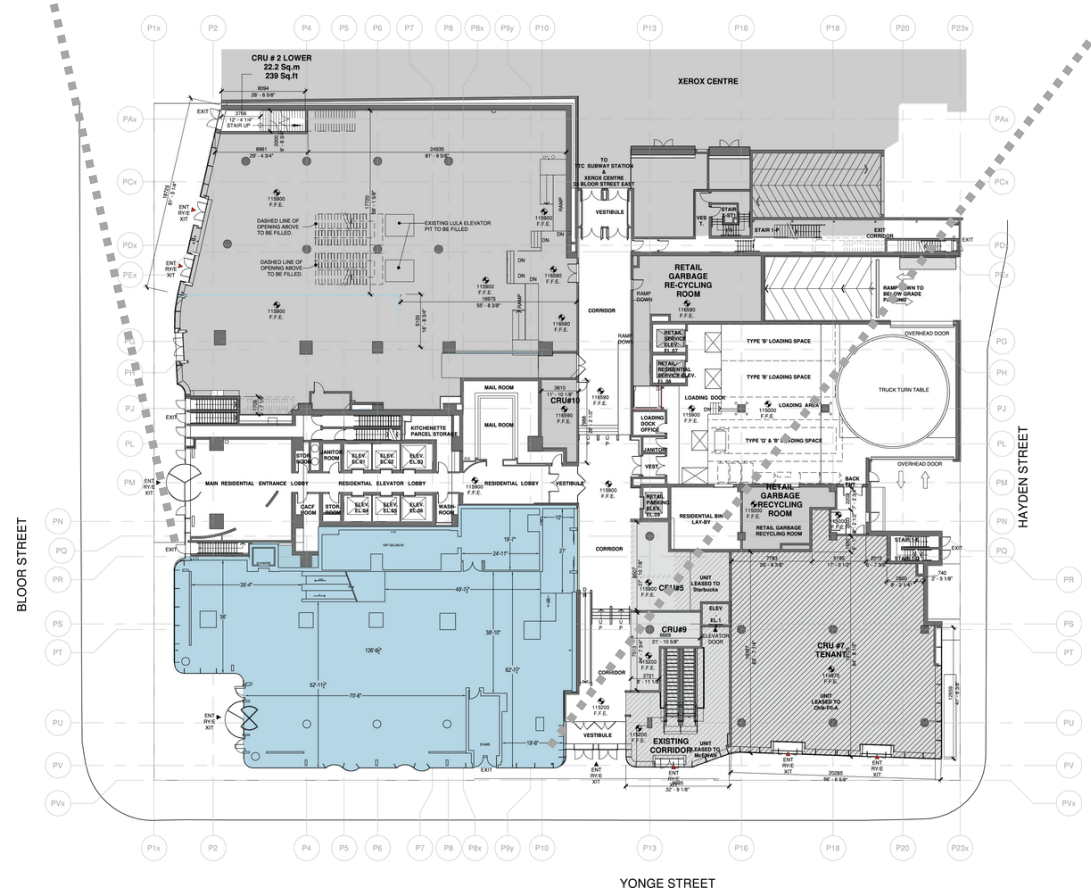
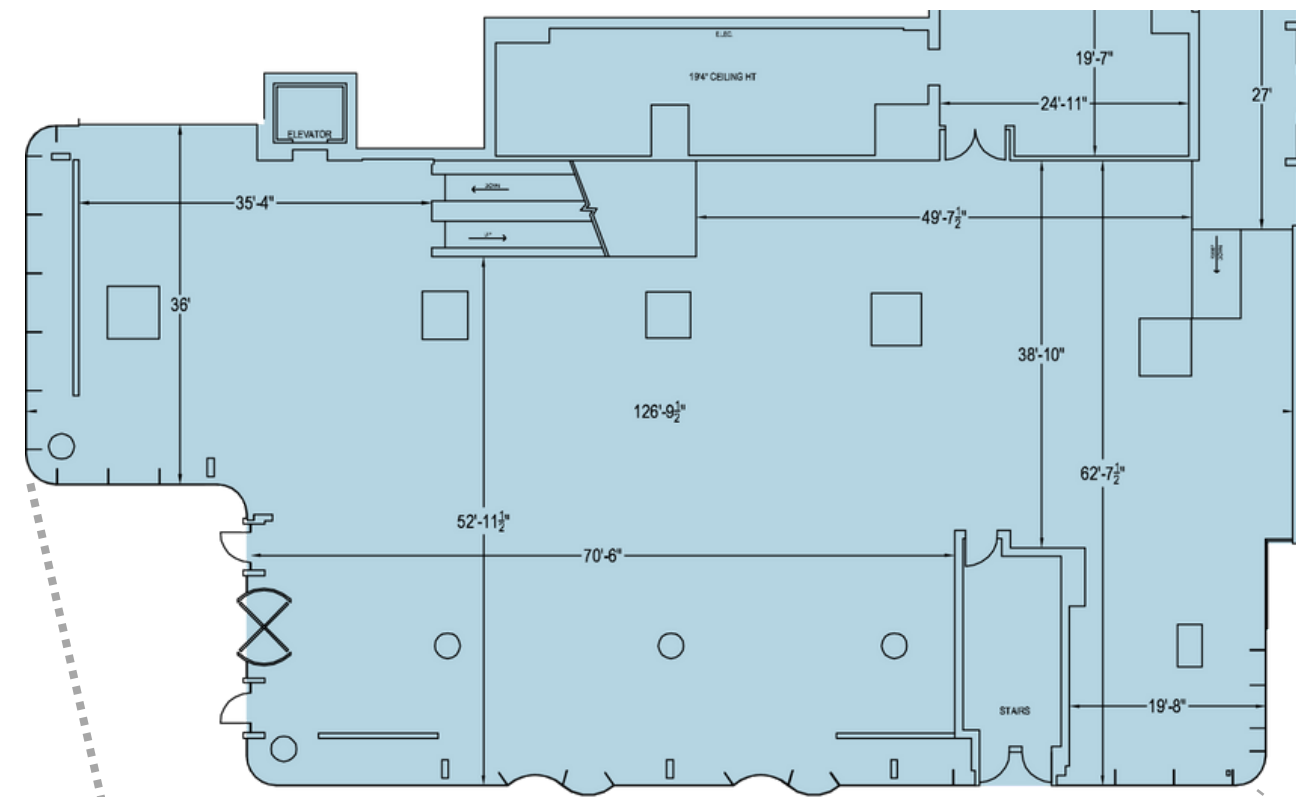
100,000 pedestrians

This area sees over 100,000 pedestrians daily

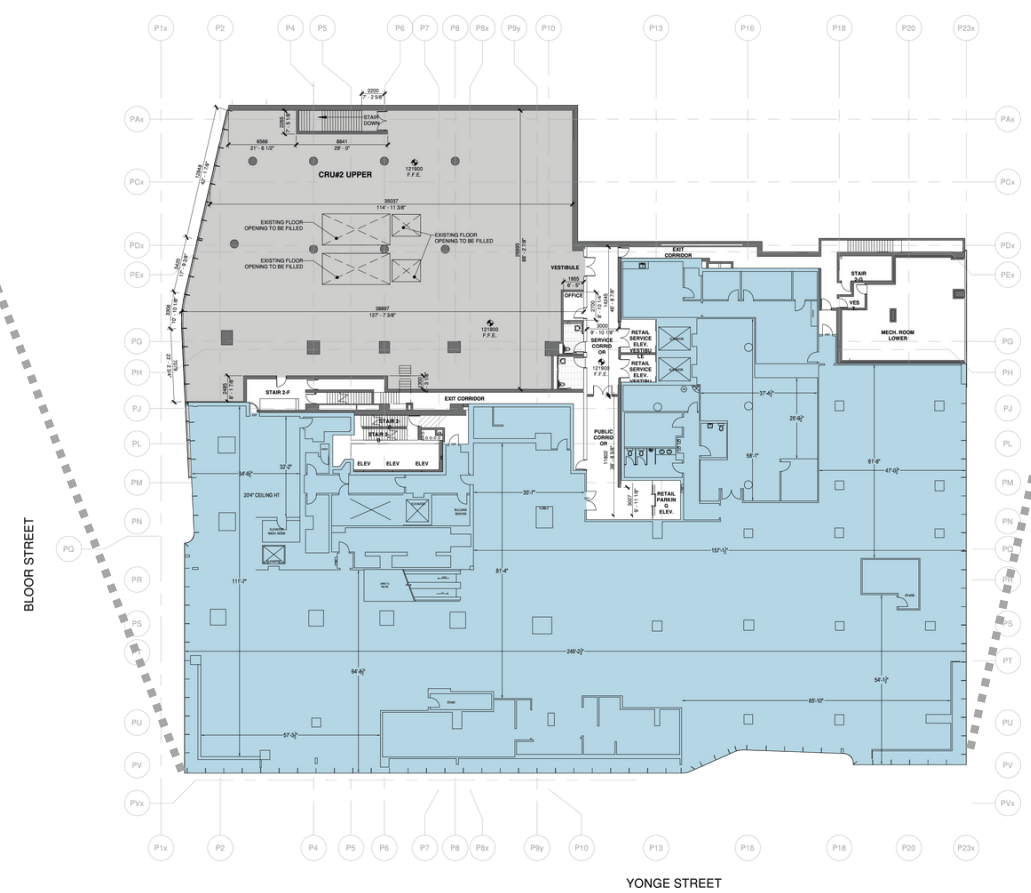
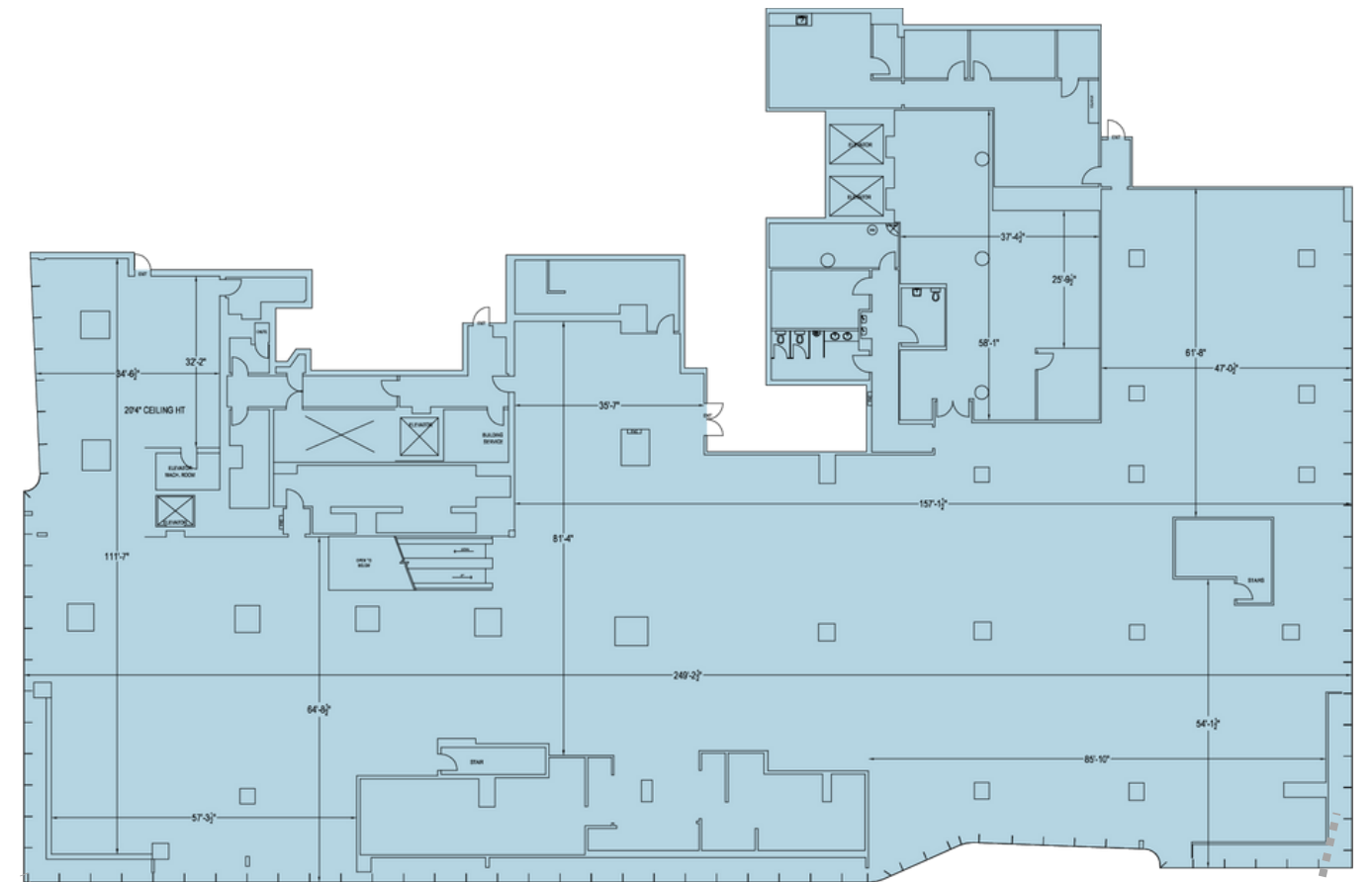


Floor Plan

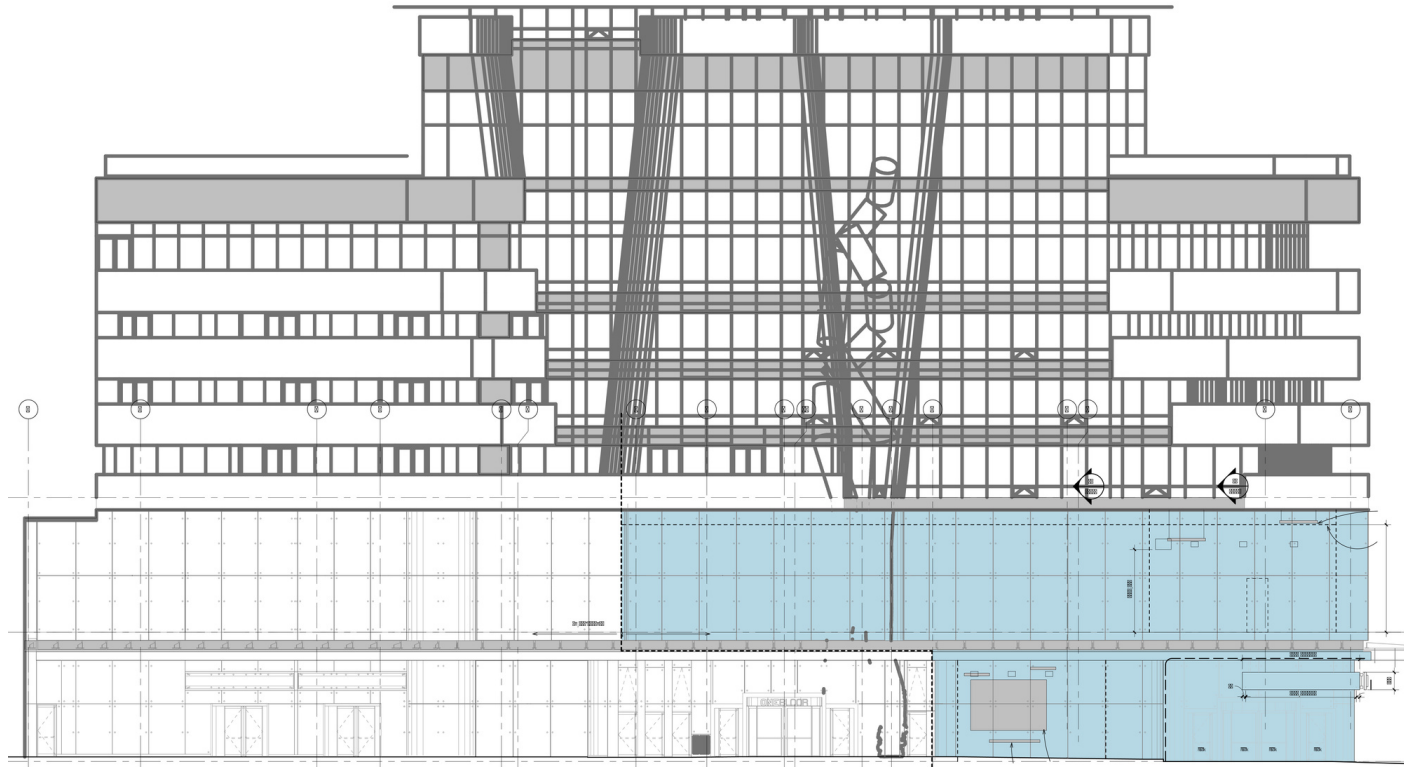
Ground Floor Size (sf) 8,655 sf



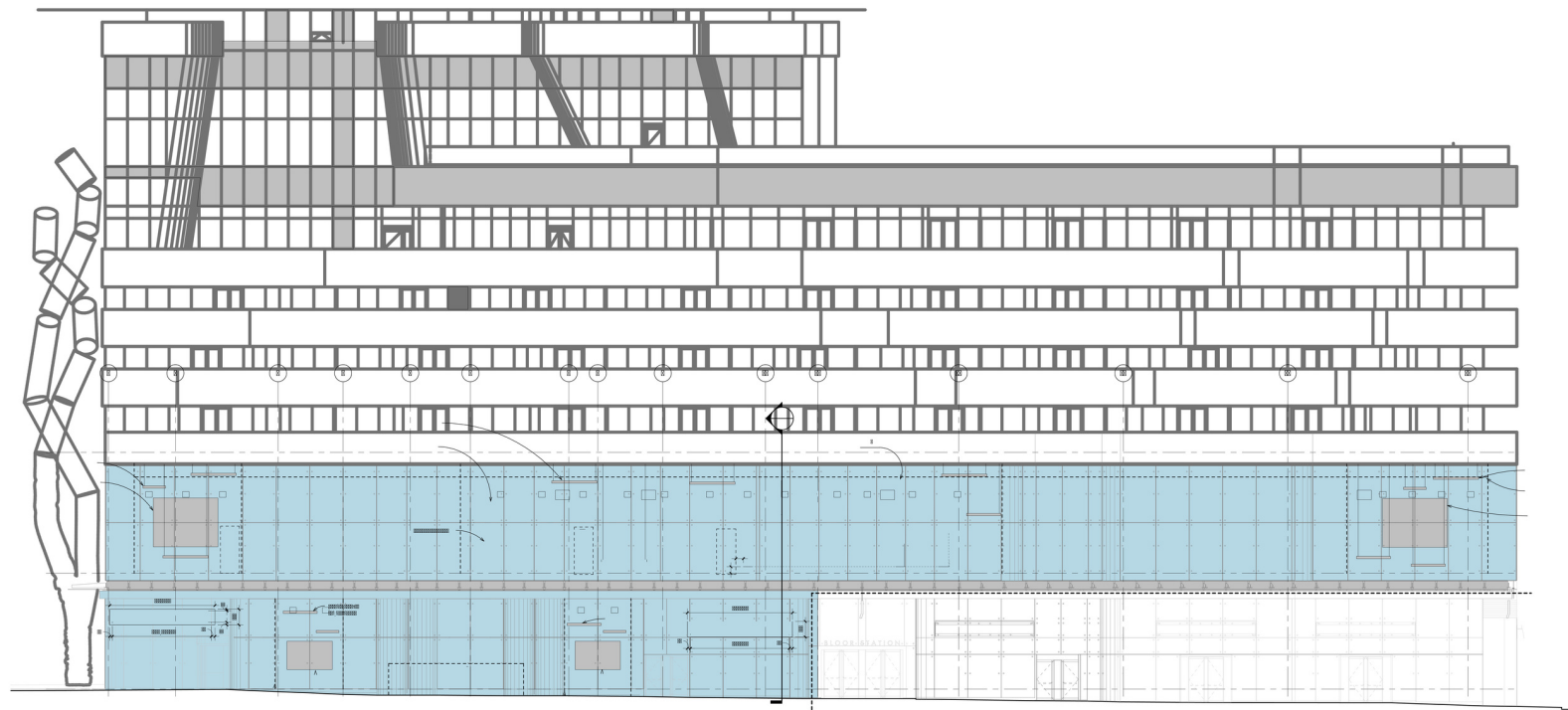
29,901 sf Size (sf) Second Floor



Bloor Street Elevation



Yonge Street Elevation



- Hard corner of Yonge St & Bloor St
- Direct Interior Access to Bloor-Yonge Subway Station
- Floor-to-ceiling glazing on each level
- Over 130' of frontage along Yonge St and Bloor St
- Approximately 20' ceilings on both levels



[CLICK HERE TO GET IN TOUCH!](#)

new.fcr.ca/one-bloor-east-flagship/