

# ZOLTEK

COMMERCIAL REAL ESTATE SERVICES



## 90 Saddle Way, Chesterfield, NJ 08515

FOR MORE INFORMATION, PLEASE CONTACT EXCLUSIVE BROKERS:

**Anjelica McCann**

C: 201.815.0320

D: 973.233.7161

[Anjelica@ZoltekCRE.com](mailto:Anjelica@ZoltekCRE.com)

**Urszula Zoltek**

C: 973.896.8377

D: 862.217.5610

[Urszula@ZoltekCRE.com](mailto:Urszula@ZoltekCRE.com)

# AVAILABLE FOR LEASE

- Only 3 Retail Units Left Available : 2,625 SF | 1,666 SF | 1,637 SF
- Newly Constructed "Downtown" Mixed-Use Center with 39,000 SF of Retail Space and Over 1,000 Homes
- \$205,583.00 Avg. Household Income - Within 1 Mile Radius
- Only Retail Center in Federally Recognized Award-Winning Master Plan Community
- New Construction with Ample Parking
- Easy Accessibility to NJ Turnpike, Route 1, 206 and I-95
- Zoning (PVD-3) Planned Village Development: [Click Here For More Info](#)
- National Tenants: 7-ELEVEN, Wawa, McDonald's, AutoZone, Extra Space Storage, Retro Fitness, AT&T, Bank of America, PNC Bank, CVS, Meineke and many more.
- To Visit The Shops At Old York Village: [Click Here](#)

FOR MORE INFORMATION, PLEASE CONTACT EXCLUSIVE BROKERS:

**Anjelica McCann**

C: 201.815.0320

D: 973.233.7161

[Anjelica@ZoltekCRE.com](mailto:Anjelica@ZoltekCRE.com)

**Urszula Zoltek**

C: 973.896.8377

D: 862.217.5610

[Urszula@ZoltekCRE.com](mailto:Urszula@ZoltekCRE.com)

**ZOLTEK**

COMMERCIAL REAL ESTATE SERVICES

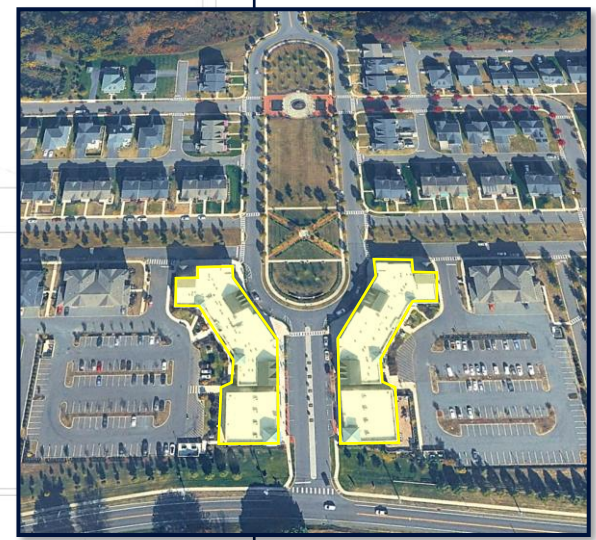
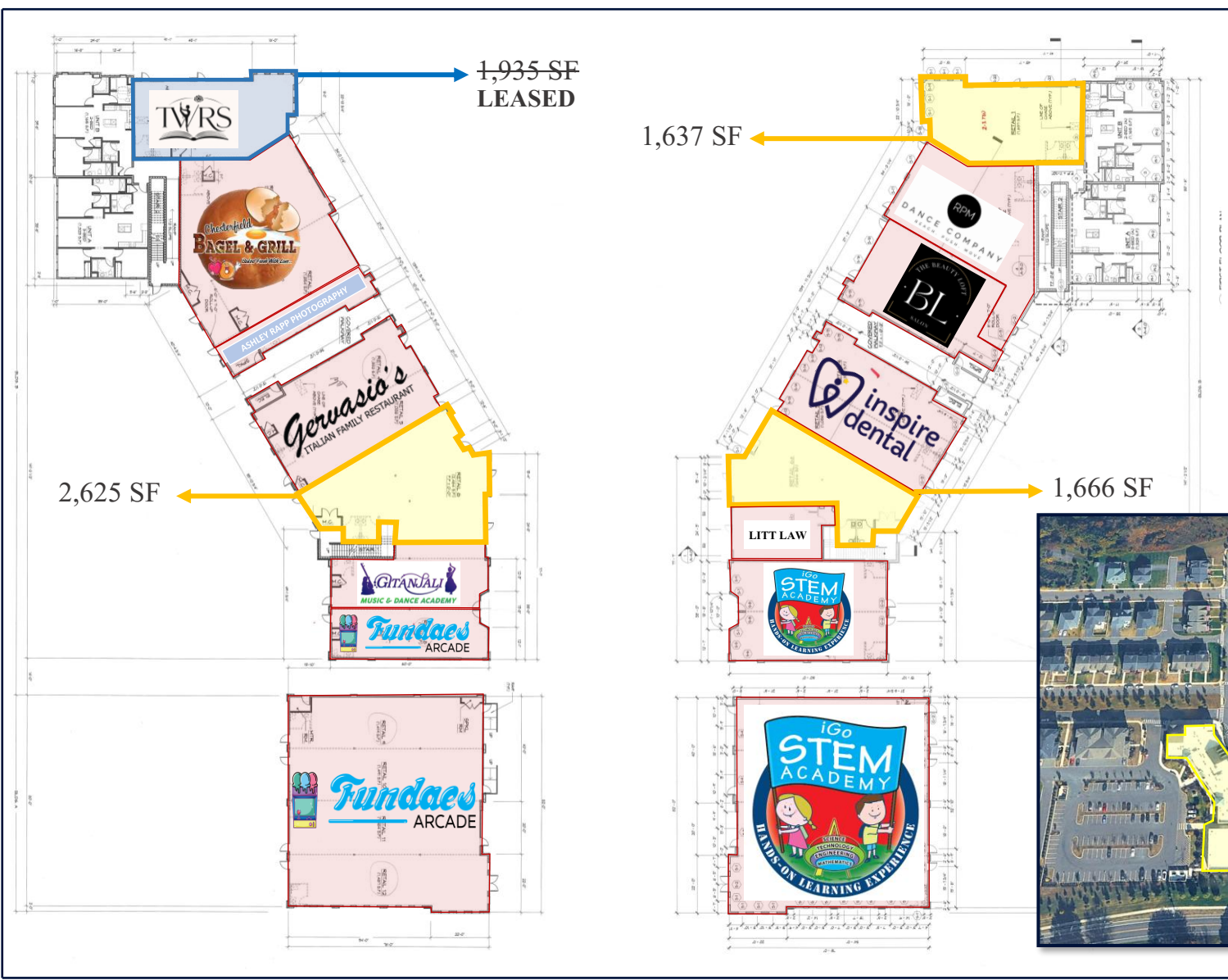
ZOLTEK COMMERCIAL REAL ESTATE SERVICES- Licensed Real Estate Broker

- 15 Furler Street, Totowa, NJ 07512 \* T: 973.798.6130

WWW.ZOLTEKCRE.COMALTHOUGH ALL THE INFORMATION REGARDING PROPERTY FOR SALE, RENTAL OR FINANCING IS FROM SOURCES DEEMED RELIABLE SUCH INFORMATION HAS NOT BEEN VERIFIED, AND NO EXPRESS REPRESENTATION IS MADE NOR IS ANY TO BE IMPLIED AS TO THE ACCURACY THEREOF, AND IT IS SUBMITTED SUBJECT TO ERRORS, OMISSIONS, CHANGE OF PRICE, RENTAL OR OTHER CONDITIONS, PRIOR SALE, LEASE OR FINANCING, OR WITHDRAWAL WITHOUT NOTICE.

Z  
O  
L  
L  
T  
E  
K





ZOLTEK COMMERCIAL REAL ESTATE SERVICES- Licensed Real Estate Broker

15 Furler Street, Totowa, NJ 07512 \* T: 973.798.6130

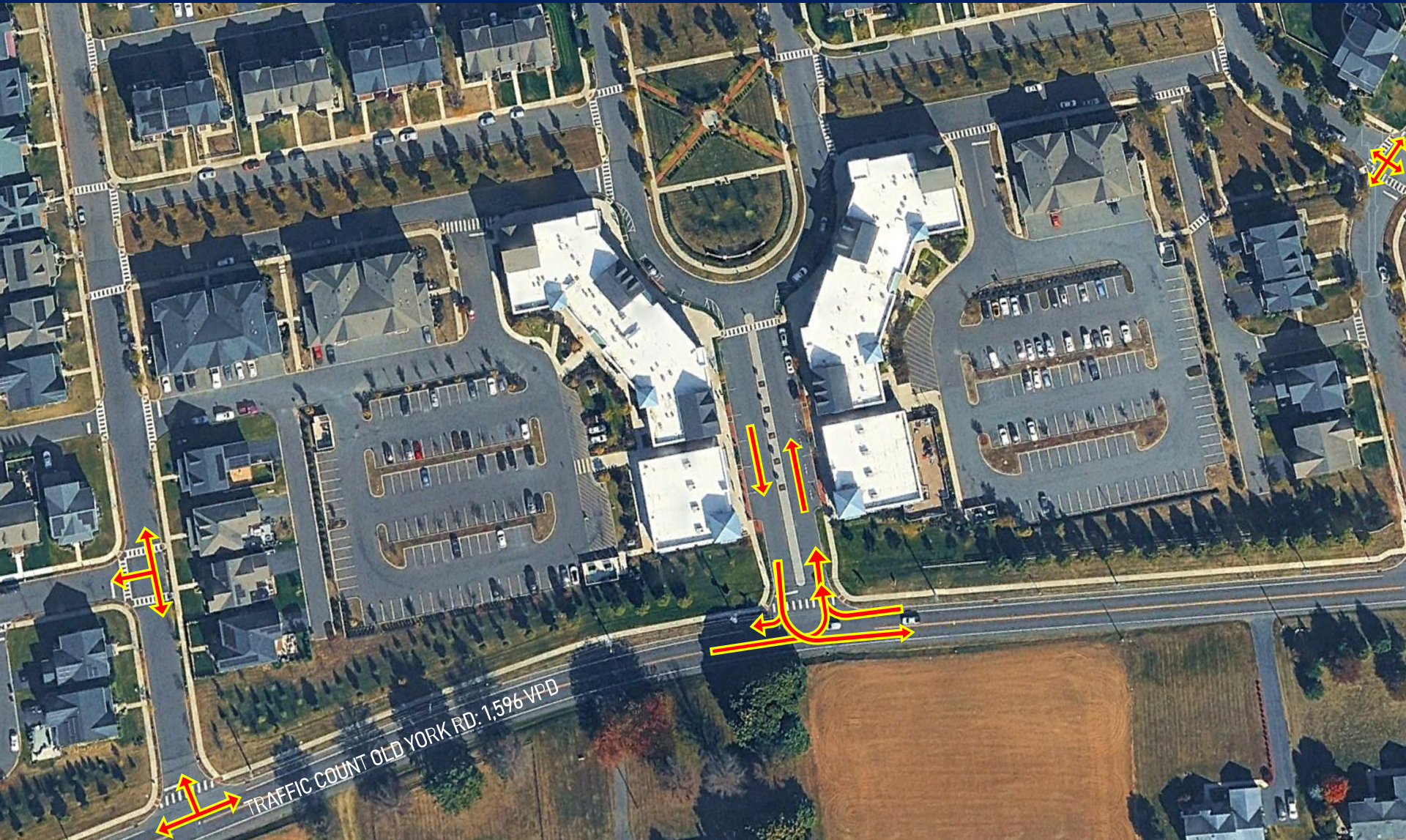
WWW.ZOLTEKCRE.COMALTHOUGH ALL THE INFORMATION REGARDING PROPERTY FOR SALE, RENTAL OR FINANCING IS FROM SOURCES DEEMED RELIABLE SUCH INFORMATION HAS NOT BEEN VERIFIED, AND NO EXPRESS REPRESENTATION IS MADE NOR IS ANY TO BE IMPLIED AS TO THE ACCURACY THEREOF, AND IT IS SUBMITTED SUBJECT TO ERRORS, OMISSIONS, CHANGE OF PRICE, RENTAL OR OTHER CONDITIONS, PRIOR SALE, LEASE OR FINANCING, OR WITHDRAWAL WITHOUT NOTICE.

# SITE PLAN

# ZOLTEK

COMMERCIAL REAL ESTATE SERVICES

90 Saddle Way  
Chesterfield, NJ 08515



ZOLTEK COMMERCIAL REAL ESTATE SERVICES- Licensed Real Estate Broker

- 15 Furler Street, Totowa, NJ 07512 \* T: 973.798.6130

WWW.ZOLTEKRE.COMALTHOUGH ALL THE INFORMATION REGARDING PROPERTY FOR SALE, RENTAL OR FINANCING IS FROM SOURCES DEEMED RELIABLE SUCH INFORMATION HAS NOT BEEN VERIFIED, AND NO EXPRESS REPRESENTATION IS MADE NOR IS ANY TO BE IMPLIED AS TO THE ACCURACY THEREOF, AND IT IS SUBMITTED SUBJECT TO ERRORS, OMISSIONS, CHANGE OF PRICE, RENTAL OR OTHER CONDITIONS, PRIOR SALE, LEASE OR FINANCING, OR WITHDRAWAL WITHOUT NOTICE.



206



Bordentown Reg. High School



Peter Muschal Elementary School



DUNKIN'

206



Chesterfield Elementary

206



Bordentown Chesterfield Rd - 5,057 yds

Crosswicks Chesterfield Rd - 3,647 yds



**SITE**



Bordentown Armory



Gervasio's ITALIAN FAMILY RESTAURANT



ASHLEY RAPP PHOTOGRAPHY



Magical Acres



Nicklas Andersen Stable

**ZOLTEK**  
COMMERCIAL REAL ESTATE SERVICES



<b>DEMOGRAPHICS</b>	<i>3 Mile</i>	<i>5 Miles</i>	<i>10 Miles</i>
Population	21,676	55,172	346,170
Daytime Population	5,004	20,110	191,406
Households	6,939	20,210	125,265
Average Age	36.7	42.4	40.2
Average HH Income	\$138,455	\$129,128	\$104,171

**FOR FURTHER INFORMATION,  
PLEASE CONTACT EXCLUSIVE BROKER:**

**Anjelica McCann**

C: 201.815.0320

D: 973.233.7161

Anjelica@ZoltekCRE.com

**Urszula Zoltek**

C: 973.896.8377

D: 862.217.5610

Urszula@ZoltekCRE.com

**ZOLTEK**

COMMERCIAL REAL ESTATE SERVICES