

# FOR SALE KING COMMERCE CENTER

2010-2046 Exploration Way

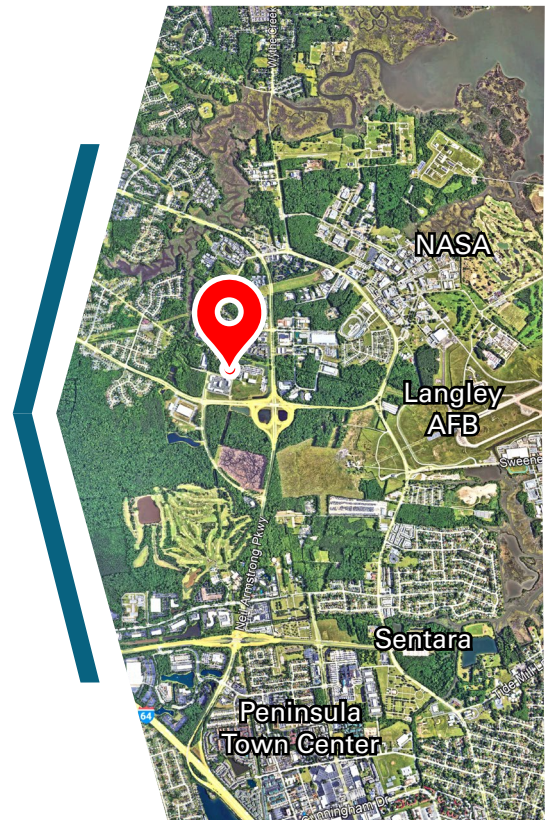
**HARVEY LINDSAY**  
COMMERCIAL REAL ESTATE





**FOR SALE**

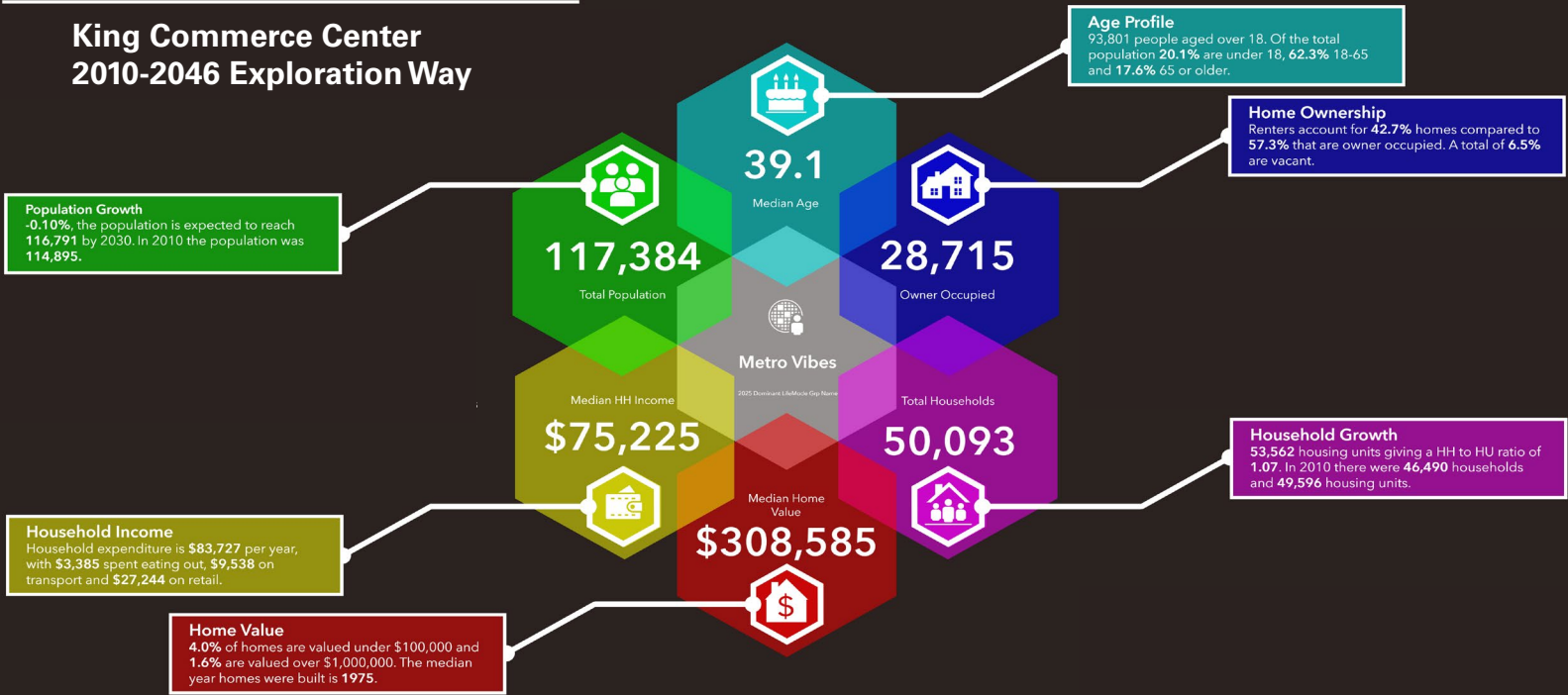
- Located in the North Campus of Hampton Roads Center off Magruder Boulevard and within one (1) mile of the Langley Airforce Base/NASA main gates.
- The 32,500 square feet building was built in 2010 and is constructed of brick, steel, and glass. Doors and roof are over specified for sound attenuation. The metal roof is a standing seam.
- The location has 98 parking spaces (3 spaces per 1,000 Square Feet).
- The Property has a 100% occupancy rate with 12 tenants.
- **PRICE: \$4,650,000**





## Key Site Information

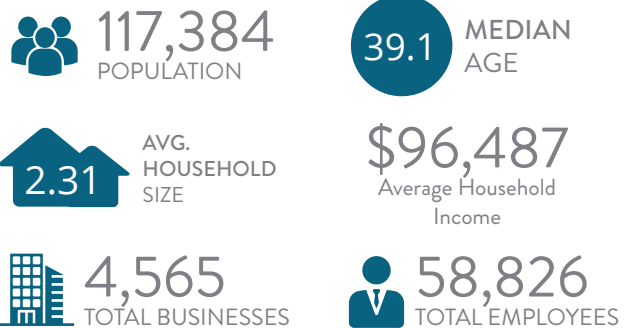
**King Commerce Center**  
2010-2046 Exploration Way



Source: This infographic contains data provided by Esri (2025, 2030), ACS (2019-2023), U.S. Census (2010, 2020), Esri-U.S. BLS (2025).



## KEY FACTS WITHIN 5 MILES



2025 Summary	1 Mile	3 Miles	5 Miles
Population	6,277	55,078	117,384
Households	2,811	23,000	50,093
Families	1,622	14,205	30,152
Average Household Size	2.23	2.35	2.31
Median Age	32.9	36.6	39.1
Median HH Income	\$75,000	\$83,557	\$75,225
Average HH Income	\$89,372	\$106,489	\$96,487

# KING COMMERCE CENTER

2010-2046 Exploration Way

For more information:  
**MATT LEFFLER, CCIM**  
757.640.9284  
[MattLeffler@HarveyLindsay.com](mailto:MattLeffler@HarveyLindsay.com)

**HARVEY LINDSAY**  
COMMERCIAL REAL ESTATE