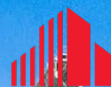


**NEW HIGH-END
SUBLEASE**



**CUSHMAN &
WAKEFIELD**



1180 Peachtree Street NE

1180 PEACHTREE

SUITE 2050: 4,890 RSF

SPACE HIGHLIGHTS

- Offices on Glass
- High-End Finishes



ABOUT THE BUILDING

1180 Peachtree is a 41-story Class A office tower located at the corner of 14th and Peachtree in the heart of Midtown with a walkability score of 93. The building is LEED-CS Gold certified.

Amenities include Pour Taproom, Café at Pharr (opening Spring 2026), 10,500 SF health club with towel service, 50-seat conference center and private board room, secure bike storage, car wash on-site.

Features

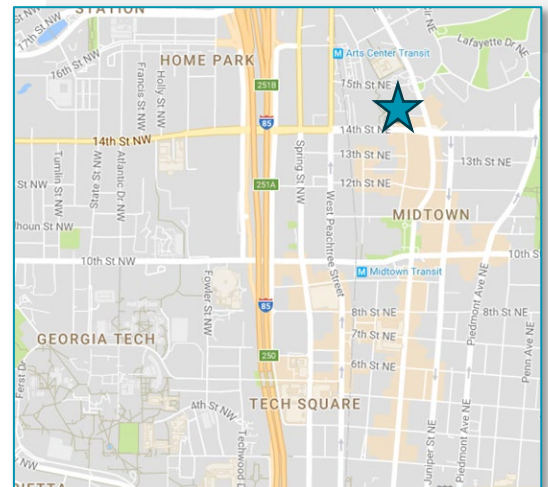
Available Space: 4,890 RSF

Term: Through May 31st, 2028

Rental Rate: Negotiable

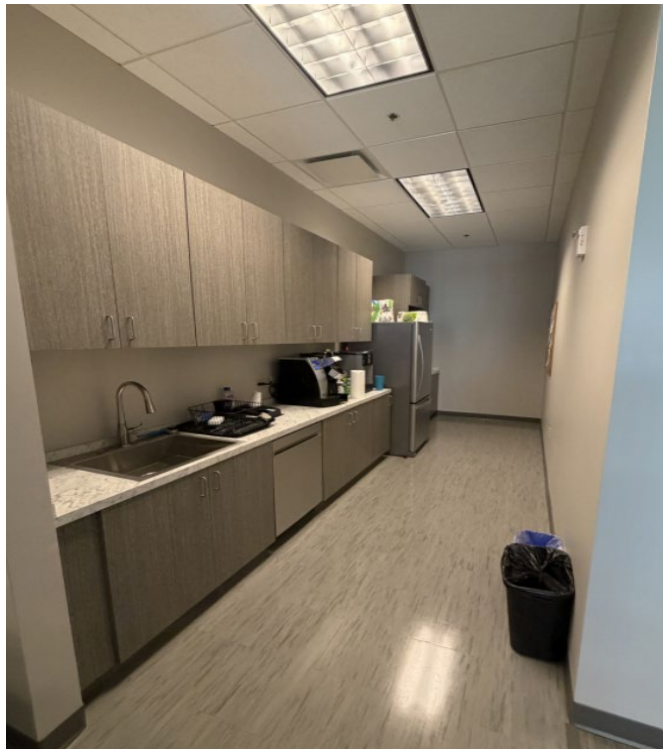
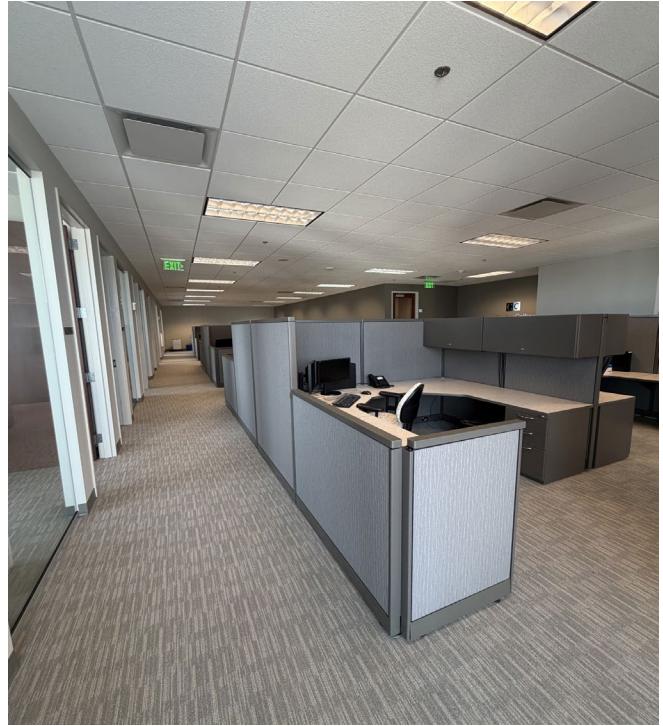
Furniture: Available

Parking: 1.5/1,000 RSF

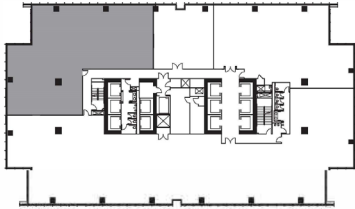




SUITE PHOTOS



FLOOR PLAN



KEY PLAN



Schematic Plan #1

WORKSTATIONS (Bx8)	12
PRIVATE OFFICES	9
CONFERENCE	1
BREAK	1
IT/STORAGE	1
ENTRY	1

*All furniture shown is for representational purposes only.
 **Per Client direction, these drawings do not reflect guidelines set forth by the World Health Organization, Centers for Disease Control and Prevention or other governmental agency guidelines related to COVID-19.



- Offices: 9
- Workstations: 12
- Conference Room
- High-End Break Room
- IT Room/Storage

CONTACT

TRAVIS JACKSON

Executive Managing Director
 (404) 915 4140
travis.jackson@cushwake.com

ANNIE LEWIS GOMEZ

Director
 (404) 682 3412
annie.lewis@cushwake.com