



**Don't Wait to Buy Real Estate,
Buy Real Estate and Wait.**



Highlights

Modern, move-in ready office/warehouse facility available in Midland, positioned to support oilfield service companies, contractors, and industrial operators across the Permian Basin. The property sits on ± 1 acre, offering space for equipment parking, light yard use, and operational flexibility. With a functional office layout including four offices, reception area, breakroom, and two restrooms, this property is well-suited for companies seeking a practical, professional base of operations. Renovated 2026. Option to purchase call Tyler Hudgins

Property Details

Lease Rate	\$22/SqFt
Total SqFt	2,800 SF
Lot Size	1.0-2.0 Acres
Min. Lease Term	3 yr
Monthly NNN	
Option to Lease Full 2 acres at	
\$24.50/SF/YR	



12301 W County Rd 100 | Midland, TX 79706

Property Highlights

2,800 SF on 1.0 Acres

1,100 SF Office with 4 offices, reception, Breakroom, 2 Bathrooms

1,700 SF Shop with (3) Overhead Doors

NNN lease at \$22/SF/YR, available for immediate occupancy

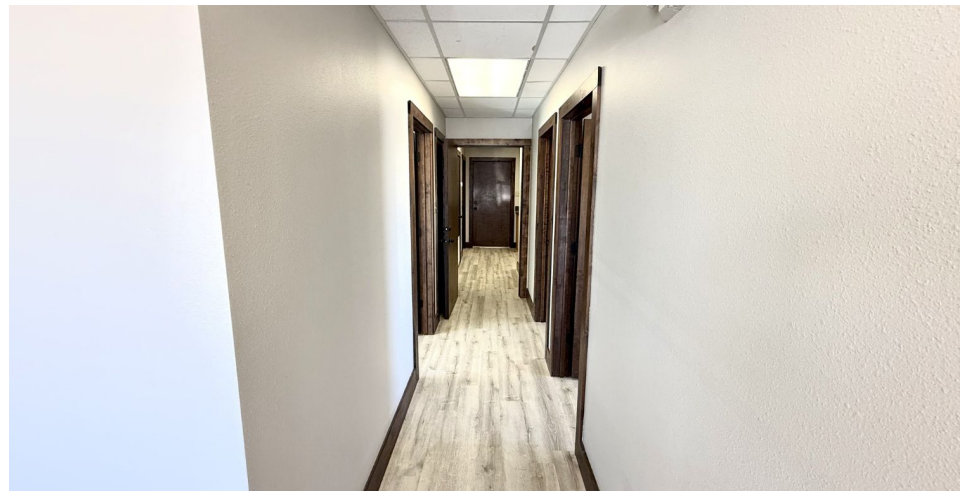
Option to Lease 2 acres at \$24.50/SF/YR

LOCATION OVERVIEW

This property offers strong access to key industrial corridors serving the Permian Basin. The location provides efficient connectivity to Midland, Odessa, and surrounding oilfield service areas, making it ideal for industrial and contractor-based operations. 5 Minutes from the airport.

- Convenient access to major Midland oilfield service routes and regional transportation corridors
- Positioned near Midland's expanding industrial and service-sector development
- Efficient routes to Midland, Odessa, and surrounding Permian Basin operations











FM 1788

CAMP
BOWWOW

QUAIL
TOOLS

SONIC
CONNECTORS

BOREALIX

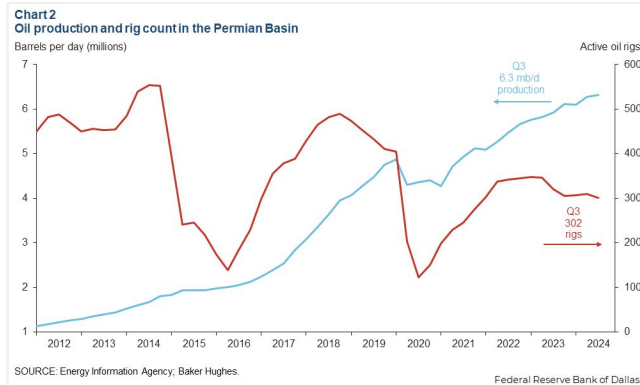
PERMIAN BASIN

W County Rd 100

12301 W County Rd 100
Midland, TX 79706
www.investtexas.com

Invest Texas
REAL ESTATE

The Permian Basin spans approximately 250 miles wide and 300 miles long across western Texas and southeastern New Mexico. It's the most prolific oil-producing region in the U.S., contributing nearly half of the nation's crude output. The basin comprises three primary sub-regions: the Midland Basin, Delaware Basin, and Central Basin Platform.



Oil production and rig count in the Permian Basin, 2012–2024.

Blue line = oil output (million barrels per day); Red line = active drilling rigs.

Production has hit record highs despite a lower rig count in recent years (source: dallasfed.org)

Location Overview: Permian Basin

Industry Trends



Production Growth: As of early 2025, the Permian Basin's oil production has reached approximately **6.2 million barrels per day (bpd)**, marking a 7.5% increase from the previous year (source: [YCharts](https://ycharts.com)).



Rig Count: The number of active drilling rigs in the basin stands at 291, a slight increase from earlier in the year but still down 4% compared to the same period last year (source: [Midland Reporter-Telegram](https://midlandreporter-telegram.com))



Investment Activity: Despite some market volatility, companies like U.S. Energy Development Corporation plan to invest up to \$1 billion in Permian projects throughout 2025, indicating **sustained confidence** in the region's potential (source: [Oil Gas Leads+IPR Newswire+1](https://oilgasleads.com))



Creating Wealth Through Real Estate

Invest Texas Real Estate, LLC is a premier commercial brokerage dedicated to delivering tailored, client-focused solutions across investment, land, and commercial transactions, leveraging deep market expertise, innovative strategies, and a commitment to accountability, integrity, and long term relationships.

Tyler Hudgins

Sales Associate
(432) 634-8057
Hudgins@InvestTexas.com

Blake Loyd

Sales Associate
(432) 934-7822
Loyd@InvestTexas.com



Investment



Land



Commercial