

# REALTEC

COMMERCIAL REAL ESTATE SERVICES

# FOR LEASE

2695 ROCKY MOUNTAIN AVENUE | Loveland, CO 80538



## PREMIER CLASS A OFFICE SPACE LAKEFRONT AT CENTERRA

PROPERTY TYPE: **CLASS A OFFICE**

AVAILABLE: **1,811 RSF**

LEASE RATE: **\$22.00 PRSF/NNN**

FEATURES:

- Corner suite with three private offices, conference room, IT closet and open work space
- 4/1000 parking ratio
- Located in the thriving Centerra Master Planned Community
- The I-25 and US-34 area is one of the fastest growing submarkets in Colorado with the ability to attract and retain top talent
- Easy access to Fort Collins, Greeley, Cheyenne and less than one hour from Denver CBD and Denver International Airport

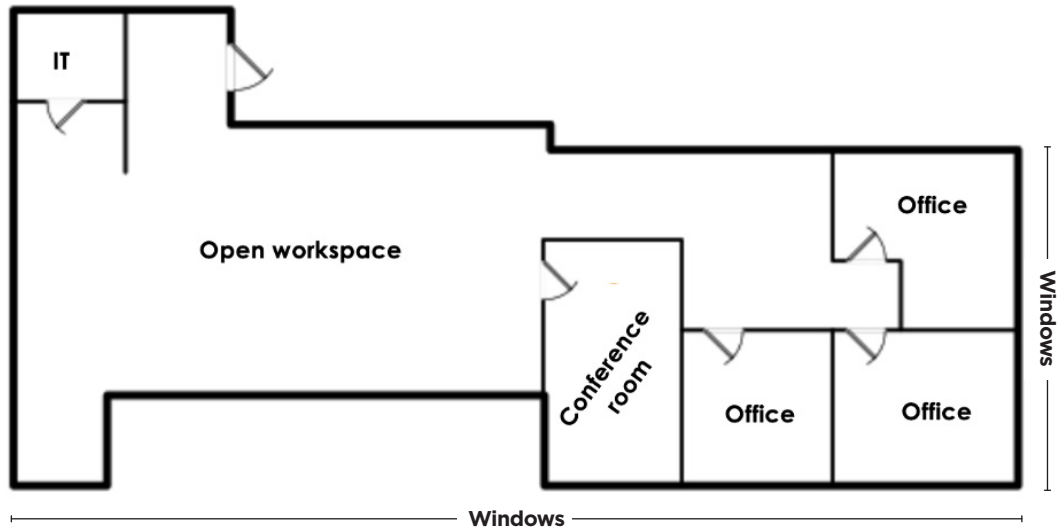


VIEW MORE REALTEC LISTINGS AT [WWW.REALTEC.COM](http://WWW.REALTEC.COM)

**JAMIE GLOBELNIK** Broker  
970.310.4811  
jamiiek@realtec.com

**RON KUEHL** Broker  
970.342.6749  
ronk@realtec.com

**SUITE 260**  
**(1,811 RSF)**



**53.1**

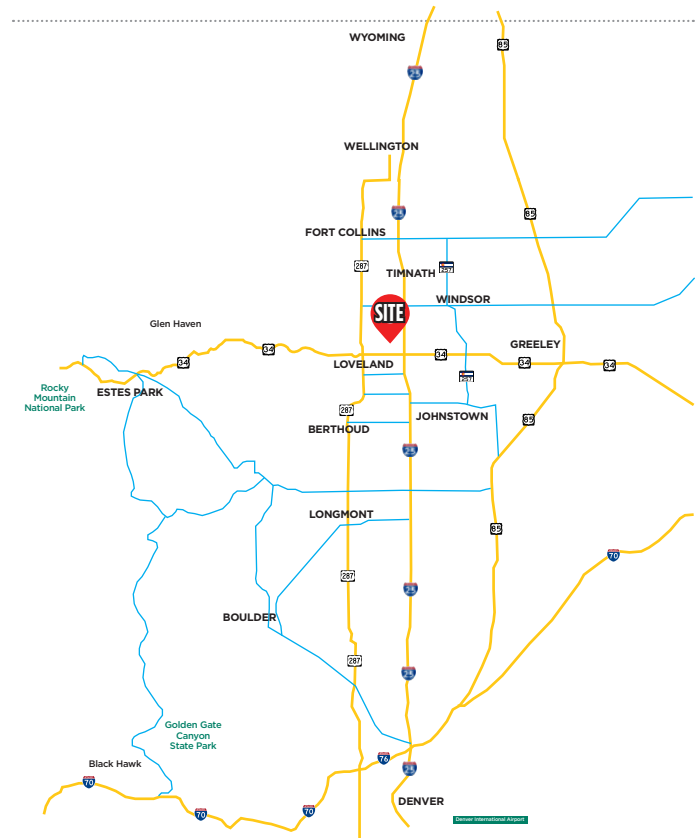
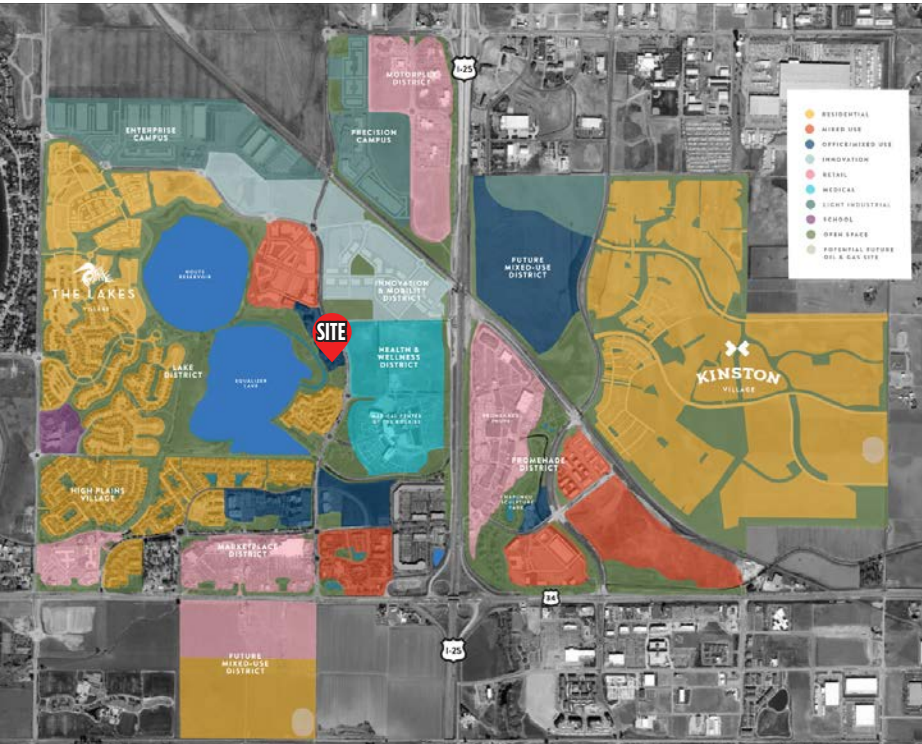
**MILES**  
TO CHEYENNE

**47.7**

**MILES**  
TO DENVER CBD

**51.8**

**MILES**  
TO DENVER  
INTERNATIONAL  
AIRPORT



**Fort Collins**

712 Whaler's Way, Bld. B, Suite 300  
Fort Collins, CO 80525  
970.229.9900

**Loveland**

200 E. 7th Street, Suite 418  
Loveland, CO 80537  
970.593.9900

**Greeley**

1711 61st Avenue, Suite 104  
Greeley, CO 80634  
970.346.9900

**REALTEC**  
COMMERCIAL REAL ESTATE SERVICES