

9701 Wilshire Blvd

Beverly Hills, CA 90212

BEVERLY HILLS TRIANGLE OFFICE/MEDICAL SPACE

PROPERTY HIGHLIGHTS

RENTAL RATE
NEGOTIABLE

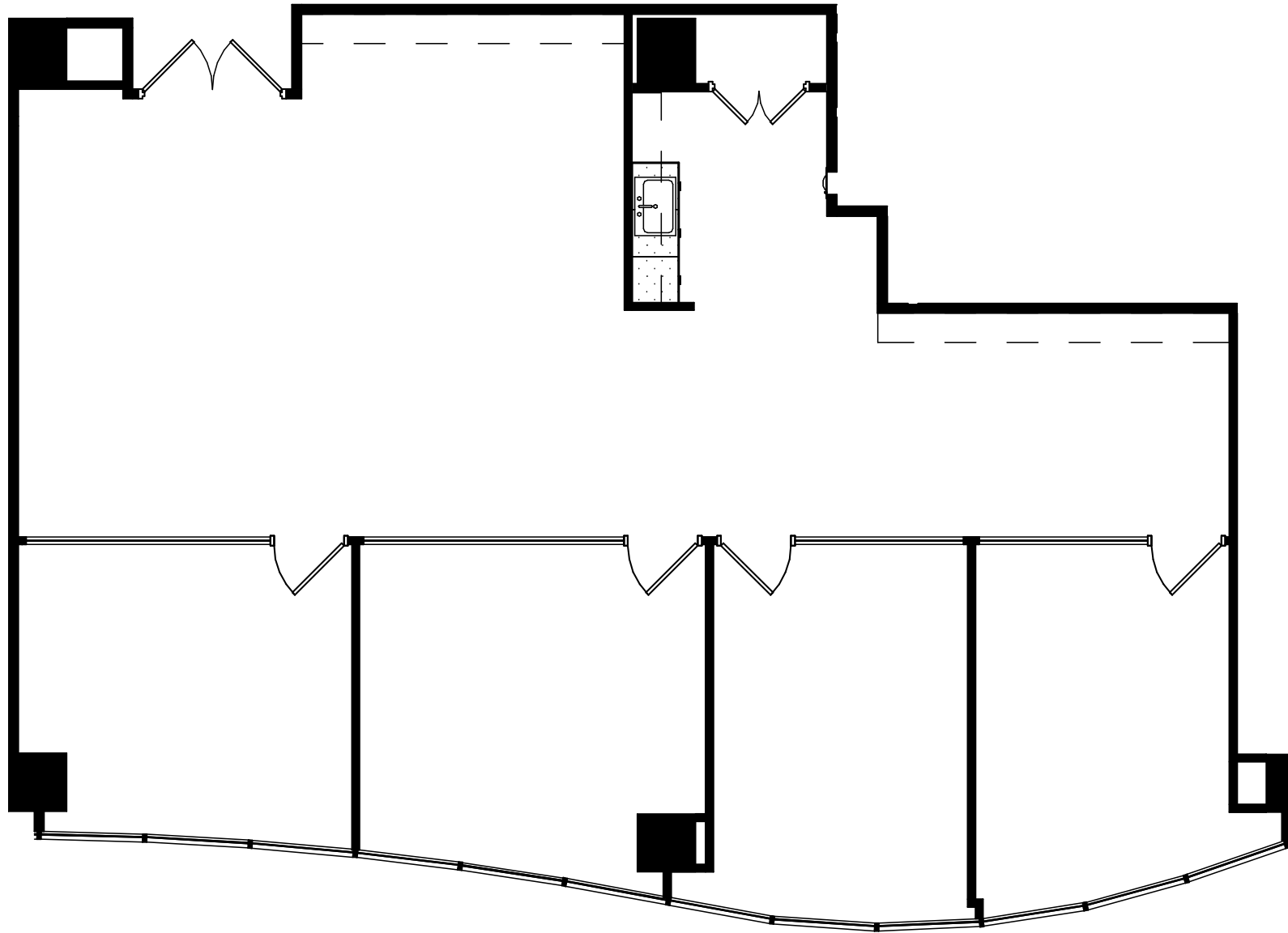
SPACE SIZE
SUITE 630: ±2,229 RSF

AVAILABILITY
NOVEMBER 1, 2026

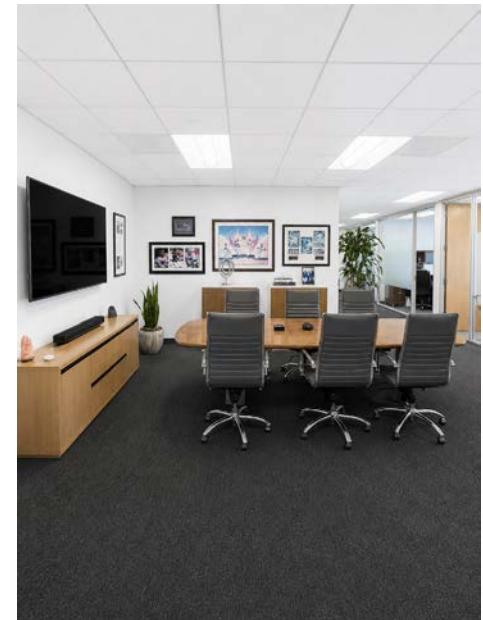
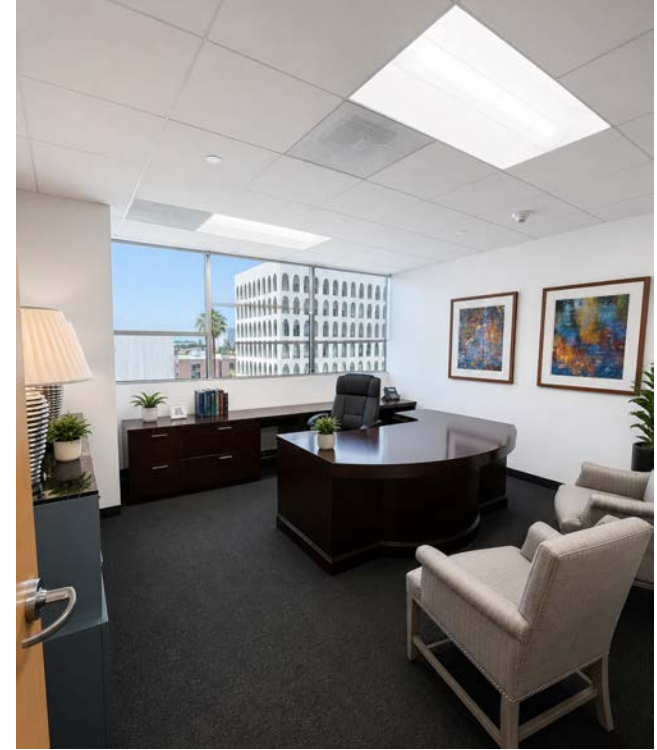
TERM
NEGOTIABLE

PARKING
2.5/1,000 SF LEASED
\$220/MONTH RESERVED
\$165/MONTH UNRESERVED
VISITOR PARKING MIN: \$2.50/HOUR
MAX: \$20/DAY

SUITE 630: ±2,229 RSF



SUITE 630 PHOTOS



AERIAL



These materials are based on information and content provided by others, which we believe are accurate. No guarantee, warranty or representation is made by Commercial Asset Group, Inc. or its personnel. All interested parties must independently verify accuracy and completeness. As well, any projections, assumptions, opinion, or estimates are used for example only and do not represent the current or future performance of the identified property. Your tax, financial, legal and toxic substance advisors should conduct a careful investigation of the property and its suitability for your needs, including land use limitations. The property is subject to prior lease, sale, change in price, or withdrawal from the market without notice.



<p>Adam Funk Managing Director 310.666.0124 afunk@cagre.com Lic. 02129715</p>		<p>COMMERCIAL ASSET GROUP</p>	<p>Commercial Asset Group 190 N. Canon Drive, STE 300 Beverly Hills, CA 90210 P: 310.275.8222 F: 310.275.8223 cagre.com Lic: 01876070</p>
--	--	--	--