

AVENUES PROFESSIONAL PARK

10175 FORTUNE PARKWAY, SUITE 903
JACKSONVILLE, FL 32256

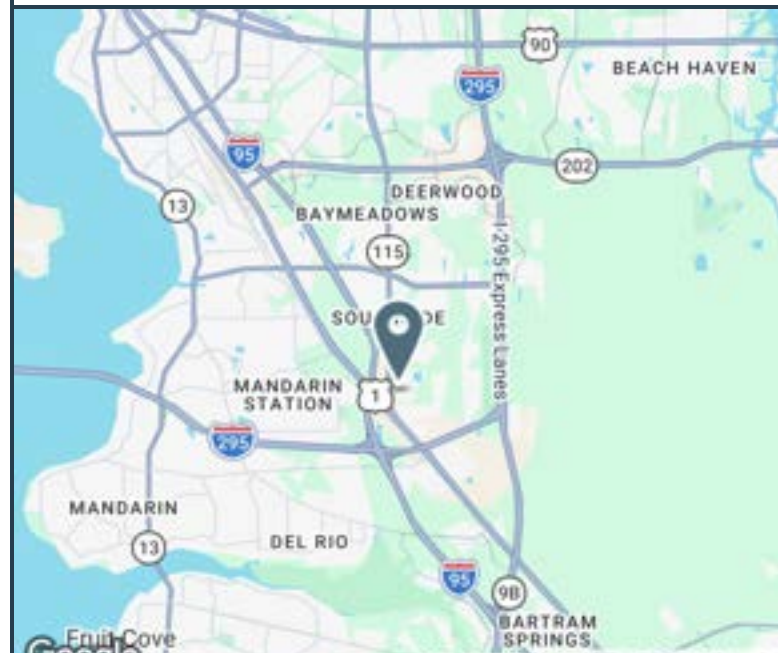


OFFICE BUILDING FOR LEASE

- ±1,062 SF Professional Office Suite
- Excellent Southside / Butler Corridor Location
- Minutes from I-95, JTB, I-295, Philips Highway & St. Johns Town Center
- Efficient Layout for Medical, Counseling, Therapy, Consulting or General Office Use
- Professional Business Park Environment
- Central HVAC
- Surface Parking Available
- Strong Access to Nearby Retail, Dining & Business Amenities
- Modified Gross Lease Structure
- Tenant Responsible for Utilities & Janitorial
- Available for Immediate Occupancy
- Well Suited for Professional or Medical Office Users

AVAILABLE SPACES

SPACES	LEASE RATE	SPACE SIZE
903	\$25.00 SF/yr	1,062 SF



ALEX EVANS
Broker / Owner

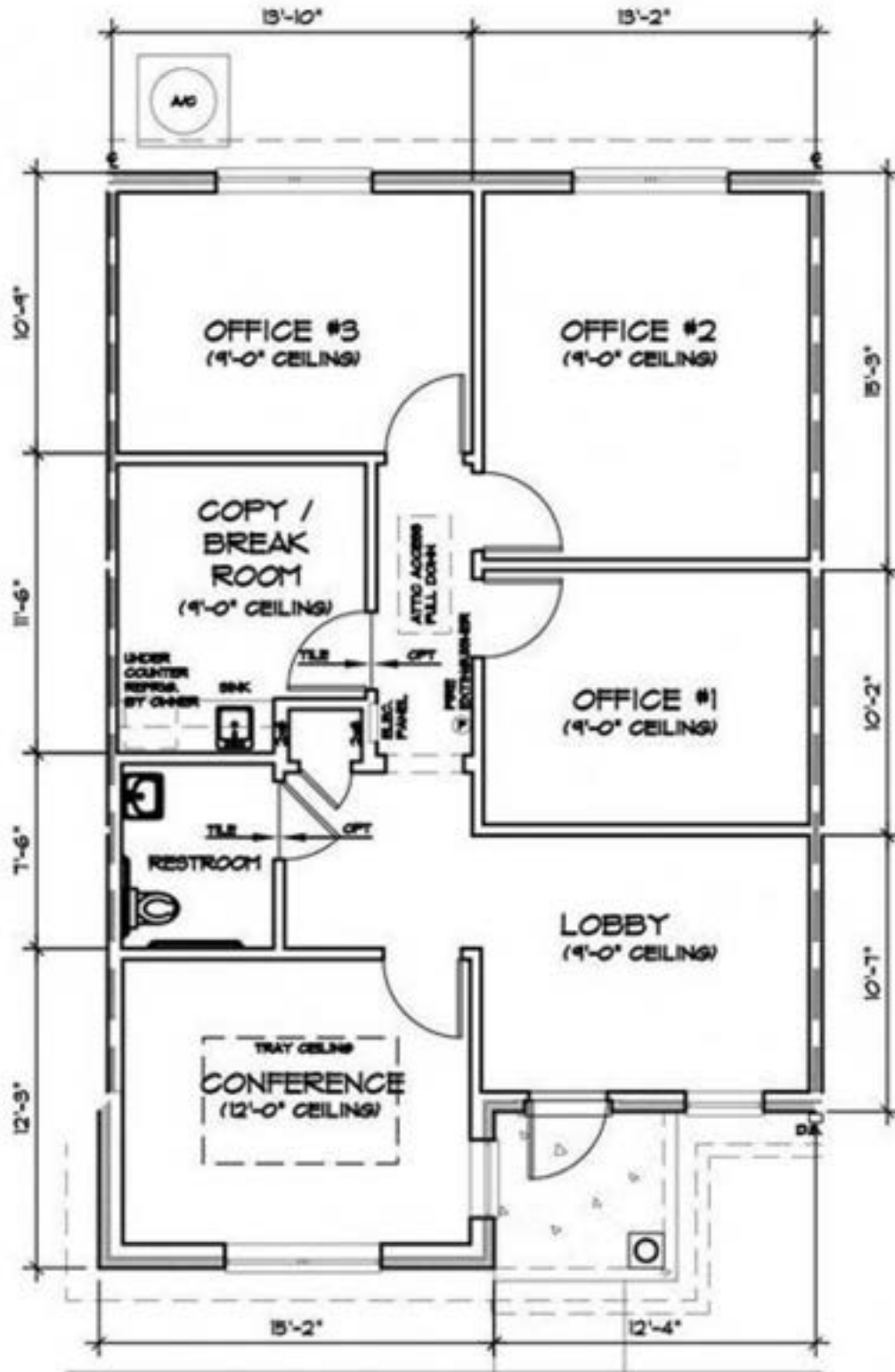
Phone | 904.210.9878
Email | alex@creprojax.com



EVANS COMMERCIAL
PROPERTIES, INC.

FLOOR PLAN

AVENUES PROFESSIONAL PARK



ALEX EVANS
Broker / Owner

Phone | 904.210.9878
Email | alex@creprojax.com



EVANS COMMERCIAL
PROPERTIES, INC.