

## INDUSTRIAL UNIT WITH OFFICES

- > GROSS INTERNAL AREA –  
151.69 SQM (1,633 SQFT)
- > RENTAL - £16,500 PER ANNUM
- > WITHIN POPULAR INDUSTRIAL  
ESTATE
- > MID TERRACED UNIT

TO LET

**UNIT 29 MURCAR COMMERCIAL PARK, DENMORE ROAD, BRIDGE OF DON, ABERDEEN, AB23 8JW**

**CONTACT:** James Morrison, [james.morrison@shepherd.co.uk](mailto:james.morrison@shepherd.co.uk), 01224 202 800 [www.shepherd.co.uk](http://www.shepherd.co.uk)



**LOCATION**

Murcar Commercial Park comprises a development of 10 units situated in the north side of Denmore Road in the heart of Bridge of Don Industrial Estate which is some four miles north of Aberdeen City Centre and just a short distance south of the AWPR Blackdog Interchange. The subjects themselves are located on the west side of Murcar Commercial Park.

Commercial occupiers within the area include Fugro, Sparrows Group and ATR.

**DESCRIPTION**

The property comprises of a mid terraced industrial unit of steel portal frame construction with harled concrete block dado walls and clad thereafter with a pitched double lined corrugated sheet roof over. The single storey section of the building is of concrete block construction harled externally with a flat mineral felt roof over.

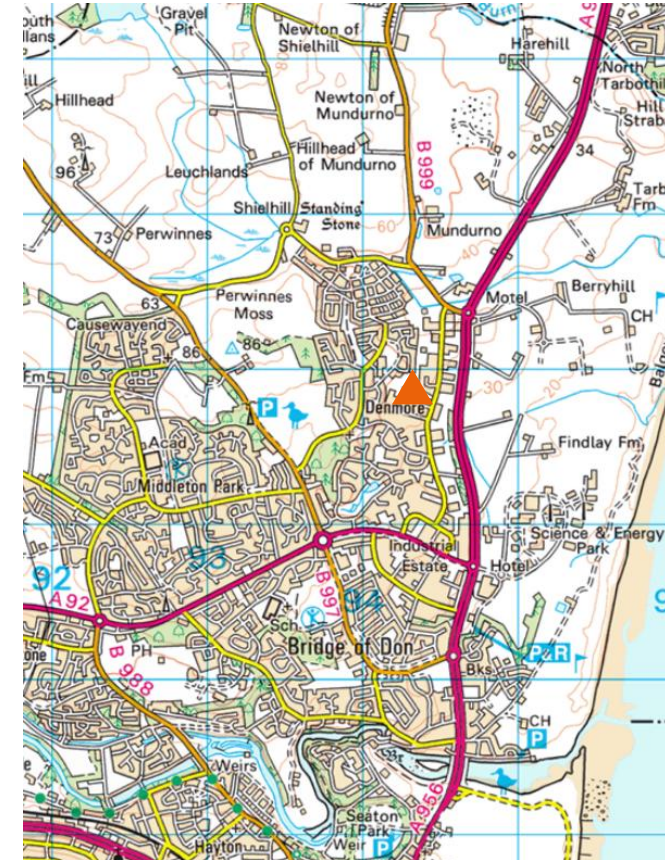
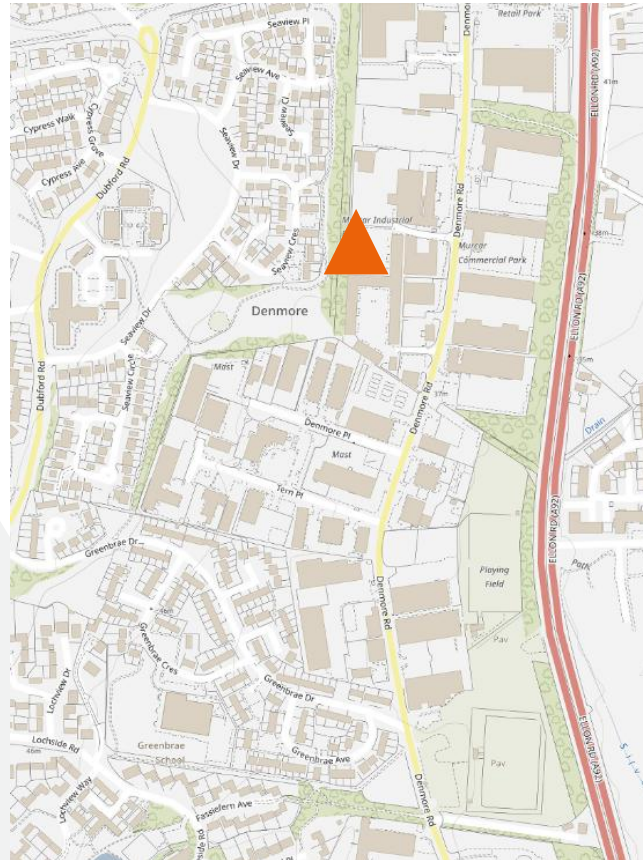
Internally the property is laid out to provide office and warehouse accommodation with access to the office being via a single pedestrian door or an up and over door providing access to the warehouse.

Within the single storey section, is a kitchen with floor and wall mounted units along with a stainless steel sink and drainer. A w.c. is also located within this section of the property.

The flooring within the office is concrete and has been overlaid in carpet with the walls and ceilings being painted plasterboard. Lighting is provided by a number of fлуorescent strip fitments.

The warehouse has a concrete floor with the walls and ceilings being to the inside face of the block walls and cladding. A number of translucent roof panels provide natural lighting with artificial being provided by high bay sodium fitments.

A mezzanine area has also been installed within this area and is accessed via a fixed timber stair with the flooring being chipboard.



### ACCOMMODATION

The unit provides the following accommodation which has been measured on a gross internal area basis in accordance with the RICS Code of Measuring Practice.

ACCOMMODATION	SQM	SQFT
Warehouse	59.82	644
Office, kitchen, w.c.	53.77	573
Mezzanine	38.09	410
<b>Total</b>	<b>151.69</b>	<b>1,633</b>

### SERVICES

Mains electricity, water and drainage are installed.

Three Phase Power.

Electric heating has been installed in offices.

### RATEABLE VALUE

The subjects are currently entered in the Valuation Roll at a Rateable Value of £12,000pa. Qualifying Tenants should be entitled to 100% Rates Relief.

### LEASE TERMS

The property is offered on a new full repairing and insuring lease for a period to be negotiated.

### VAT

All figures quoted are exclusive of Value Added Tax.

### RENTAL

£16,500 per annum, exclusive.

### ENERGY PERFORMANCE CERTIFICATE

Available upon request.

### ENTRY

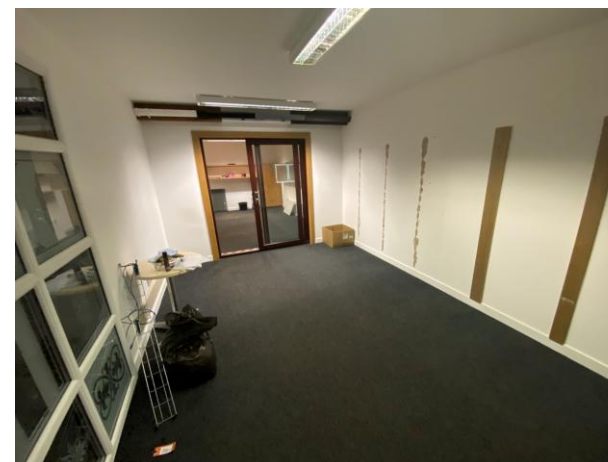
Immediately upon completion of legal formalities.

### LEGAL COSTS

Each party will be responsible for their own legal costs in connection with the transaction with the ingoing tenant liable for LBTT and registration dues in the normal manner.

### OFFERS & VIEWINGS

All offers should be submitted in writing to the agent who will also make arrangements to view on a strictly by appointment basis



**For further information or viewing arrangements please contact the sole agents:**

**Shepherd Chartered Surveyors** | 35 Queens Road, Aberdeen, AB15 4ZN, 01224 202800

James Morrison [james.morrison@shepherd.co.uk](mailto:james.morrison@shepherd.co.uk) | 01224 202 836

J & E Shepherd for themselves and for the vendors or lessors of this property whose agents they are, give notice that: (i) the particulars and plan are set out as a general outline for the guidance of intending purchasers or lessees, and do not constitute, nor constitute part of, an offer or contract (ii) all descriptions, dimensions, references to condition and necessary permissions for use and occupation, and other details are given in good faith and are believed to be correct at the date of first issue but any intending purchasers or tenants should not rely on them as statements or representations of fact but must satisfy themselves by inspection or otherwise as to the correctness of each of them; (iii) no person in the employment of J & E Shepherd has any authority to make or give any representation or warranty whatever in relation to this property; (iv) all prices and rentals are quoted exclusive of VAT unless otherwise stated. Prospective purchasers/lessees must satisfy themselves independently as to the incidence of VAT in respect of any transaction. We comply with the Money Laundering, Terrorist Financing and Transfer of Fund Regulations 2017. **PUBLICATION: JANUARY 2025**

[www.shepherd.co.uk](http://www.shepherd.co.uk)

