

**PLOT PLAN**  
SCALE: 1" = 120'-0"

SUDWEST Boise, LLC Presents  
**HIGH WEST BUSINESS PARK**  
West Gowen Rd ■ Boise, ID

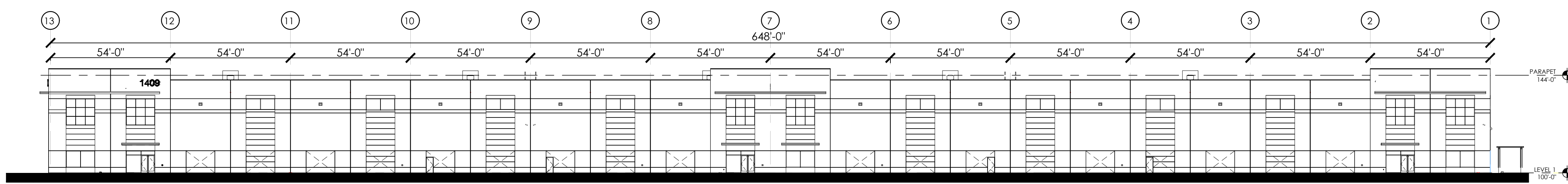
## Building A

1409 West Gowen Rd.

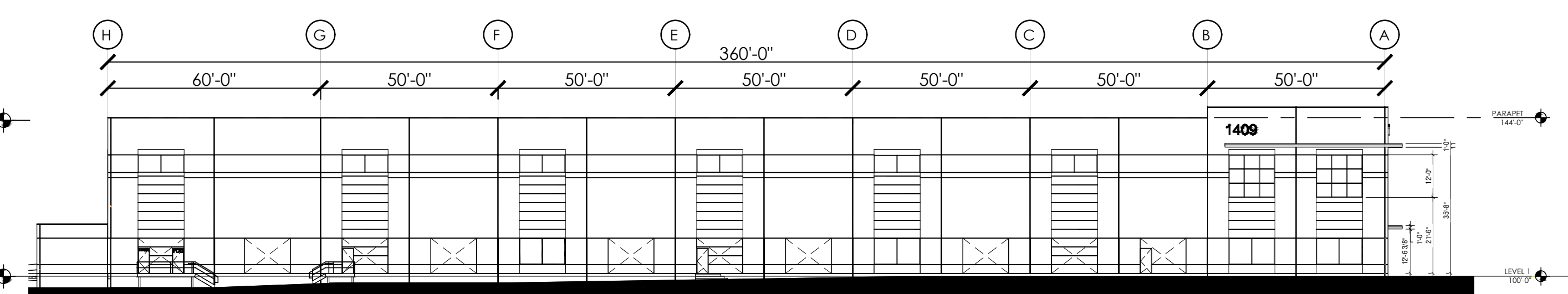
Building Area: 233,456 SF

- 60' Speed Bay; 54' x 50' Typical Bays
- Dock Doors @ 13'-6": 37
- Drive-In Door w/Ramp: 1 (+3 future knock-outs)
- 132 POV Parking Spaces + 5 Accessible: 137 TOTAL

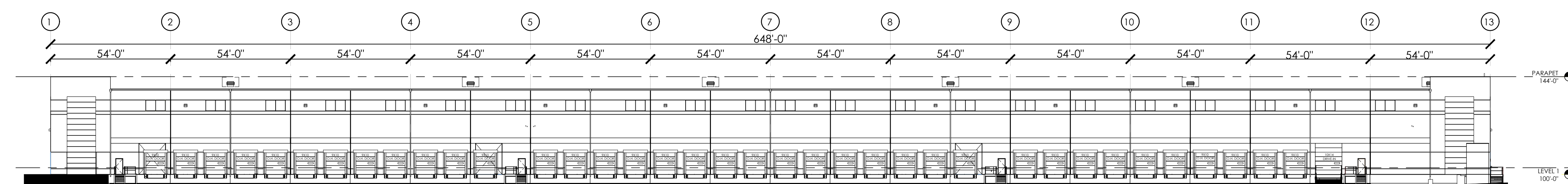
**FLOOR PLAN**  
SCALE: 1" = 30'-0"



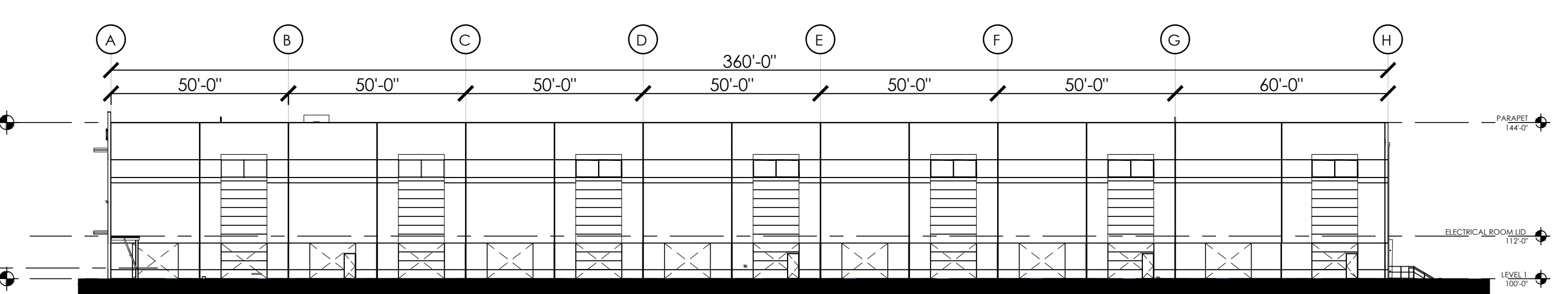
**WEST ELEVATION**  
SCALE: 1" = 30'-0"



**NORTH/WEST GOWEN RD. ELEVATION**  
SCALE: 1" = 30'-0"



**EAST /TRUCK COURT ELEVATION**  
SCALE: 1" = 30'-0"



**SOUTH ELEVATION**  
SCALE: 1" = 30'-0"

# SINGLE TENANT LAYOUT



REV. NO.	REV. DATE	DESCRIPTION	PROJECT NO.
		Sudwest Boise, LLC at <b>HIGH WEST BUSINESS PARK</b> 1409 West Gowen Road, Boise, ID	1409 WGR
		Marketing Plan: SINGLE-TENANT LAYOUT	MP-1-A