



205 WILD BASIN

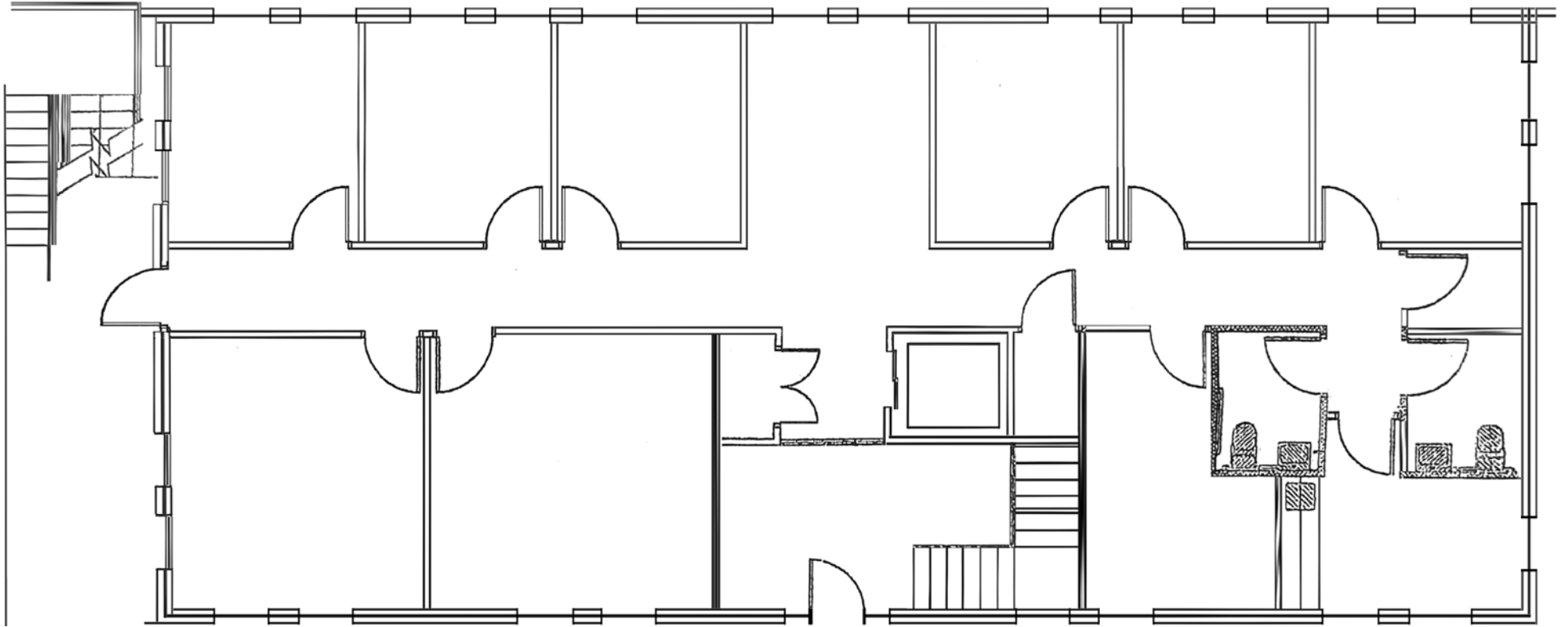
AUSTIN, TX 78746

Jim Sprinkle | 512.750.5255 | sprinkle@kuceraco.com

THE KUCERA COMPANIES | 8701 N MOPAC EXPY, SUITE 450, AUSTIN, 78749 | AUSTIN, TX 78731 | (512) 346-0025

All information contained herein, while based on information deemed reliable, has been gathered from various third-party sources, is not in any way warranted by The Kucera Companies, may not be entirely complete or accurate, and is subject to corrections, errors and/or omissions. This listing is subject to prior sale, lease, change in price and/or removal from the market without notice. The user of any information contained herein should conduct his/her own independent research including, without limitation, obtaining its own counsel and the advice of a real estate professional.

205 WILD BASIN • OFFICE SPACE FOR LEASE



A unique property in a serene setting with lovely views of the Westlake hill country

SUITE 101 • \$16.00 + \$10.77 for 2025 NNN • AVAILABLE JANUARY 1, 2026

AUSTIN, TX 78746

Jim Sprinkle | 512.750.5255 | sprinkle@kuceraco.com

THE KUCERA COMPANIES | 8701 N MOPAC EXPY, SUITE 450, AUSTIN, 78749 | AUSTIN, TX 78731 | (512) 346-0025

All information contained herein, while based on information deemed reliable, has been gathered from various third-party sources, is not in any way warranted by The Kucera Companies, may not be entirely complete or accurate, and is subject to corrections, errors and/or omissions. This listing is subject to prior sale, lease, change in price and/or removal from the market without notice. The user of any information contained herein should conduct his/her own independent research including, without limitation, obtaining its own counsel and the advice of a real estate professional.

205 WILD BASIN • OFFICE SPACE FOR LEASE



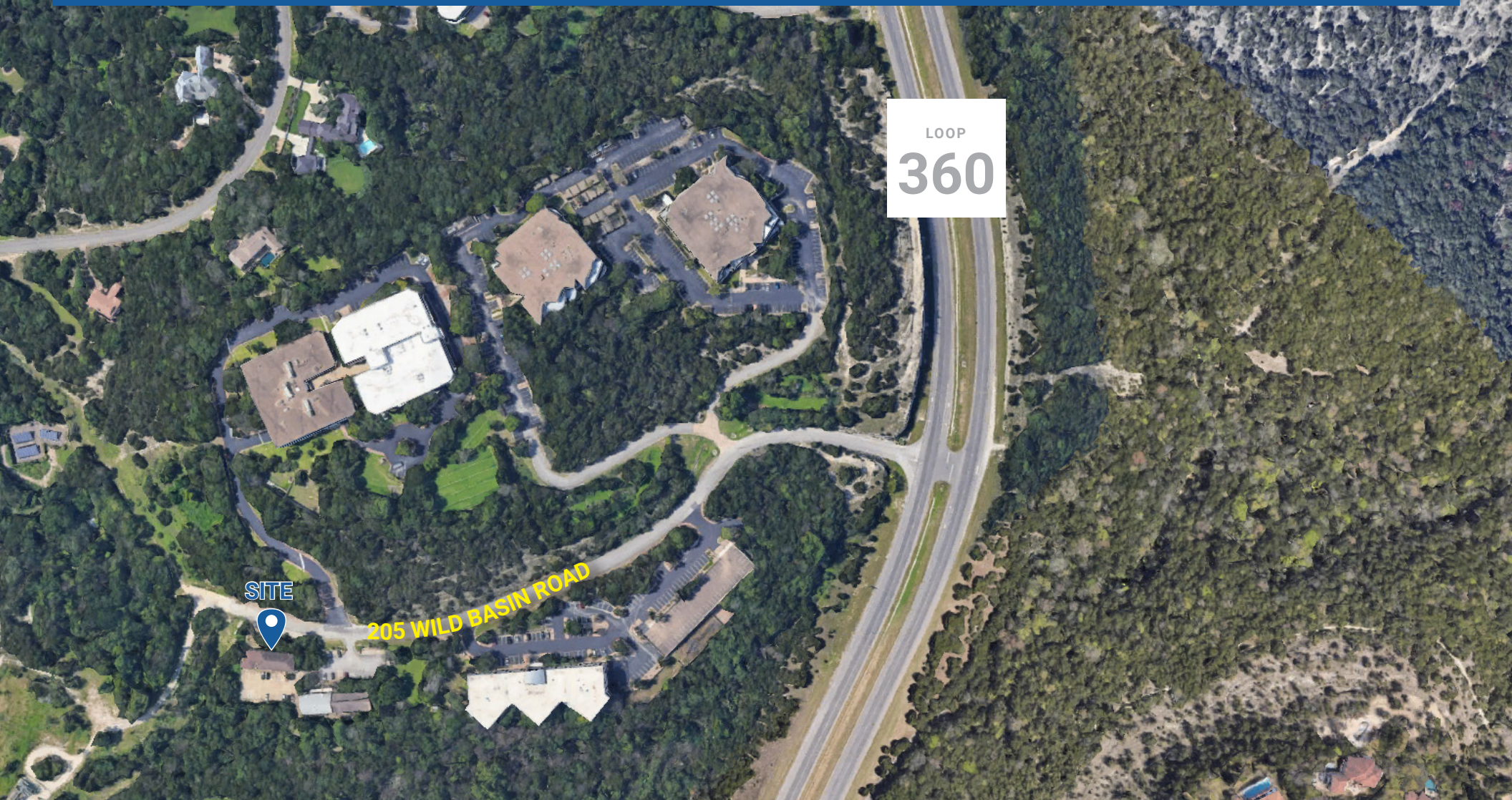
AUSTIN, TX 78746

Jim Sprinkle | 512.750.5255 | sprinkle@kuceraco.com

THE KUCERA COMPANIES | 8701 N MOPAC EXPY, SUITE 450, AUSTIN, 78749 | AUSTIN, TX 78731 | (512) 346-0025

All information contained herein, while based on information deemed reliable, has been gathered from various third-party sources, is not in any way warranted by The Kucera Companies, may not be entirely complete or accurate, and is subject to corrections, errors and/or omissions. This listing is subject to prior sale, lease, change in price and/or removal from the market without notice. The user of any information contained herein should conduct his/her own independent research including, without limitation, obtaining its own counsel and the advice of a real estate professional.

205 WILD BASIN • OFFICE SPACE FOR LEASE



AUSTIN, TX 78746

Jim Sprinkle | 512.750.5255 | sprinkle@kuceraco.com

THE KUCERA COMPANIES | 8701 N MOPAC EXPY, SUITE 450, AUSTIN, 78749 | AUSTIN, TX 78731 | (512) 346-0025

All information contained herein, while based on information deemed reliable, has been gathered from various third-party sources, is not in any way warranted by The Kucera Companies, may not be entirely complete or accurate, and is subject to corrections, errors and/or omissions. This listing is subject to prior sale, lease, change in price and/or removal from the market without notice. The user of any information contained herein should conduct his/her own independent research including, without limitation, obtaining its own counsel and the advice of a real estate professional.

205 WILD BASIN • OFFICE SPACE FOR LEASE



AUSTIN, TX 78746

Jim Sprinkle | 512.750.5255 | sprinkle@kuceraco.com

THE KUCERA COMPANIES | 8701 N MOPAC EXPY, SUITE 450, AUSTIN, 78749 | AUSTIN, TX 78731 | (512) 346-0025

All information contained herein, while based on information deemed reliable, has been gathered from various third-party sources, is not in any way warranted by The Kucera Companies, may not be entirely complete or accurate, and is subject to corrections, errors and/or omissions. This listing is subject to prior sale, lease, change in price and/or removal from the market without notice. The user of any information contained herein should conduct his/her own independent research including, without limitation, obtaining its own counsel and the advice of a real estate professional.