

Office | For Lease

CBRE

12153 Woodbine Avenue

Stouffville, ON



Property Details

Location	12153 Woodbine Avenue, Stouffville, ON
Available for Lease	\$18.00 per sq. ft. net
Available sq. ft.	4,736 sq. ft. (Additional 3,875 available for a total of 8,611 sq. ft.)
Additional Rent	\$7.00 TMI per sq. ft. (2023) ¹
Possession	Immediate
Description	<ul style="list-style-type: none">Built-out high end office/showroom space in newly developed buildingCombination of open space and professional officesPolished concrete floors with an abundance of natural lightAdditional parking and warehouse space could be made available

¹TMI subject to final assessment



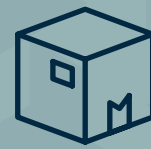
Convenient Access to
Highway 404



Close Proximity to
Gormley GO Train
Station

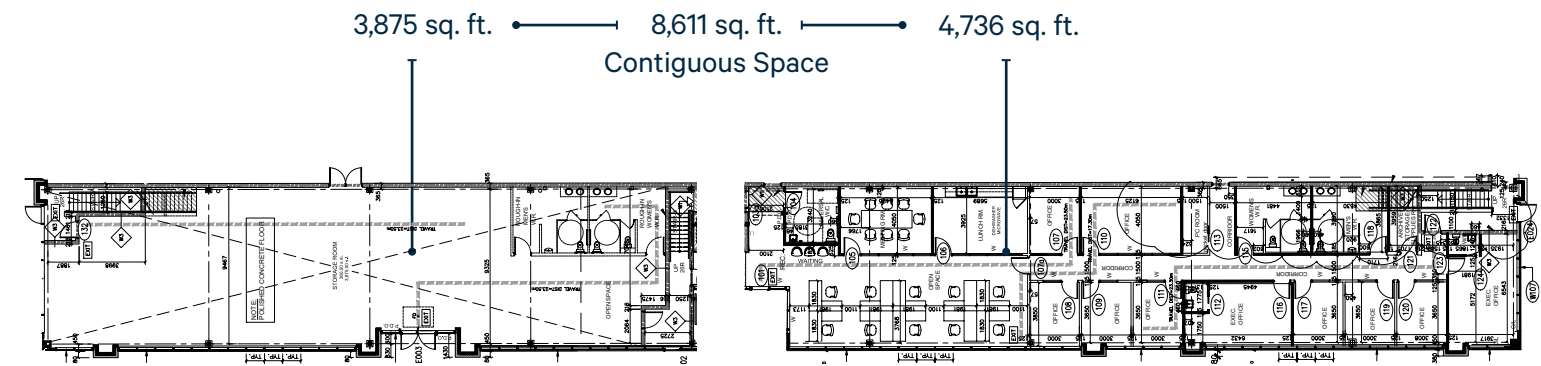


Outside Surface
Parking Available



Storage Available

Floor Plan



12153 Woodbine Avenue
Stouffville | ON

Amenities



Restaurants

1. Famous Sams Restaurant
2. Hanson's Restaurant
3. Wesley's Burgers and Wings
4. Mr. Greek
5. barBURRITO



Entertainment / Retail

1. RioCan Elgin Mills Crossing
2. SmartCentres Aurora North
3. Meadowbrook Golf Shop
4. Hillcrest Mall



Banks

1. TD
2. National Bank
3. RBC Royal Bank
4. Scotiabank



Gas Stations

1. Petro-Canada
2. Pioneer - Gas Station
3. Husky / Esso



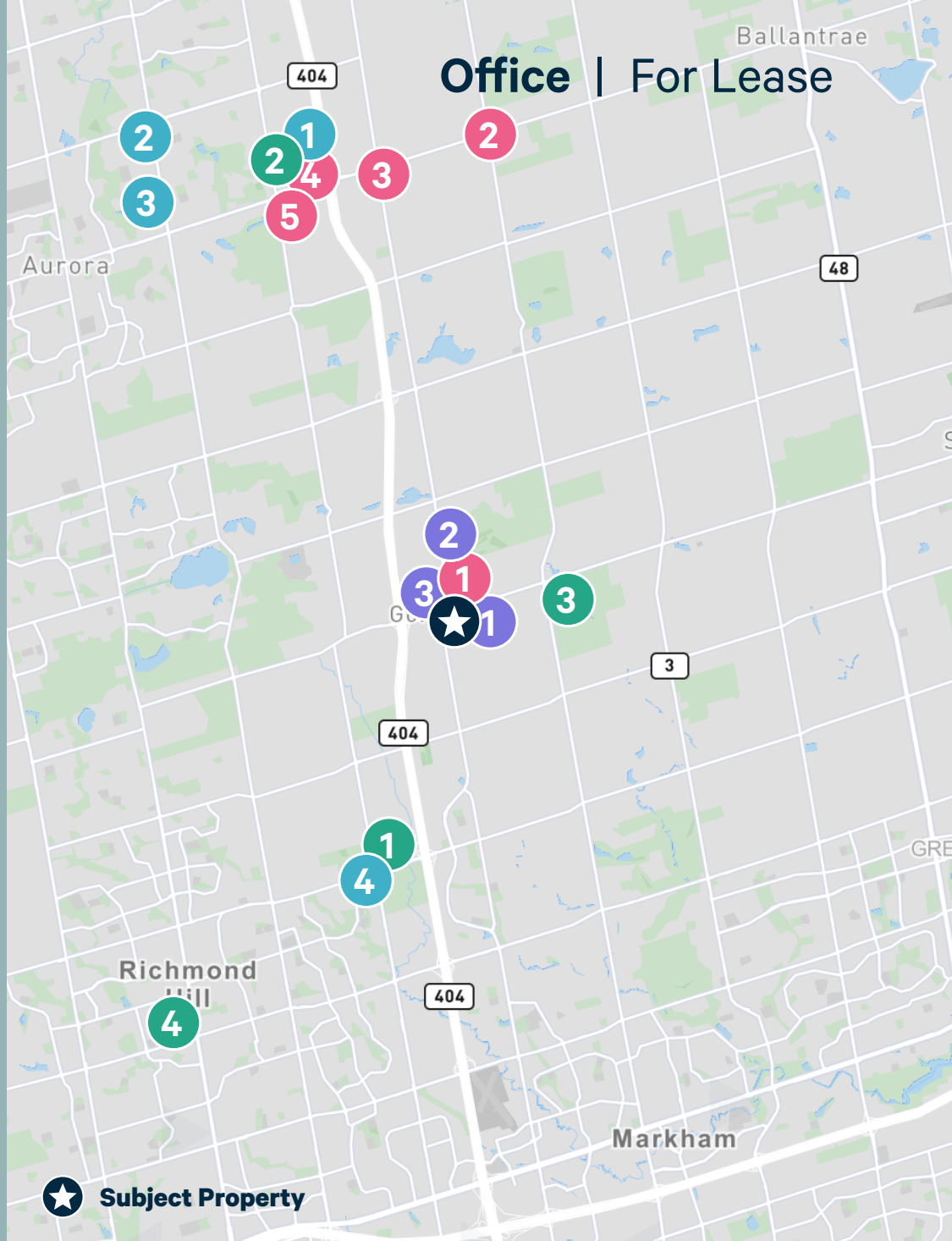
Drive Times

Highway 404	6 Minutes
Highway 407	15 Minutes
Highway 48	19 Minutes
Highway 401	30 Minutes



Transit Stop

Gormley GO	10 Minutes
------------	------------



Office | For Lease



Subject Property

Contact Us

Spencer Mussett*

Senior Vice President

+1 416 495 6273

spencer.mussett@cbre.com

Bryant Wilson*

Vice President

+1 416 495 6278

bryant.wilson@cbre.com

Tyrone Murray

Sales Representative

+1 416 495 6243

tyrone.murray@cbre.com

*Sales Representative | All Outlines Are Approximate | CBRE Limited, Brokerage | 2005 Sheppard Ave. E., #800, Toronto, ON M2J 5B4

This disclaimer shall apply to CBRE Limited, Real Estate Brokerage, and to all other divisions of the Corporation; to include all employees and independent contractors ("CBRE"). The information set out herein, including, without limitation, any projections, images, opinions, assumptions and estimates obtained from third parties (the "Information") has not been verified by CBRE, and CBRE does not represent, warrant or guarantee the accuracy, correctness and completeness of the Information. CBRE does not accept or assume any responsibility or liability, direct or consequential, for the Information or the recipient's reliance upon the Information. The recipient of the Information should take such steps as the recipient may deem necessary to verify the Information prior to placing any reliance upon the Information. The Information may change and any property described in the Information may be withdrawn from the market at any time without notice or obligation to the recipient from CBRE. CBRE and the CBRE logo are the service marks of CBRE Limited and/or its affiliated or related companies in other countries. All other marks displayed on this document are the property of their respective owners. All Rights Reserved. Mapping Sources: Canadian Mapping Services canadamapping@cbre.com; MapPoint, DMTI Spatial, Environics Analytics, Microsoft Bing, Google Earth-