

**Now
Leasing**

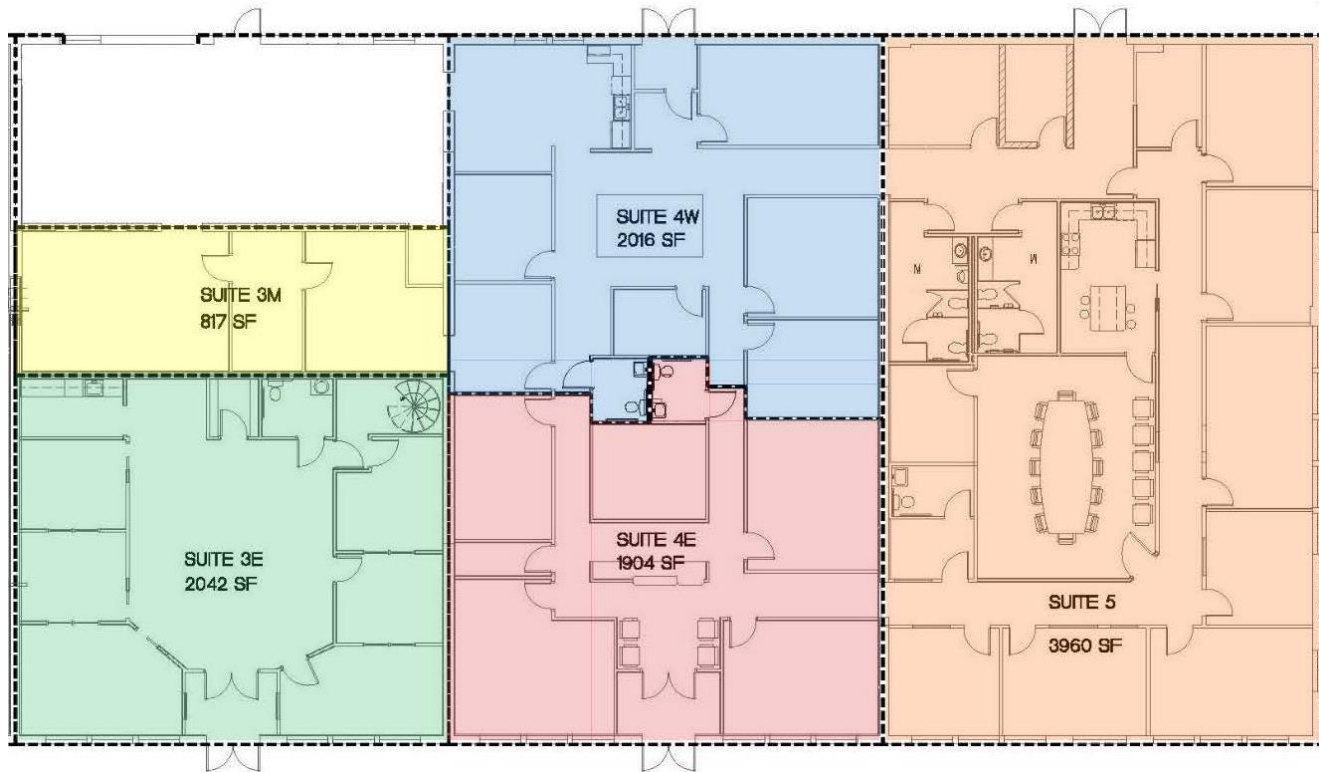
Executive Office Space Available at
The Professional Center
2900 S. State Street, Suites 3E, 4E, 4W & 5
St. Joseph, MI

**Class "A"
Office Space**



Features

- Professional Office Suites
- Convenient Location
- Will Sub-divide As Shown
- Barrier Free Restrooms
- Attractive, Colonial Style
- From 1,904 to 10,379/SF
- Will Remodel-to-Suit
- Municipal Water/Sewer
- City of St. Joseph
- All Entry Level Suites
- Private Offices
- Ample Free Parking



The Professional Center is ideally located for professionals looking for high visibility in the City of St. Joseph's Financial District. With over 10,000/SF available, the Center offers several floor plan options.

CAM covers water, major systems, maintenance of the building exterior (snow removal, landscaping, trash removal), parking, insurances and property taxes.

FISKARS PROPERTIES, INC.

Offered by: James Agens, RE Broker
1408 Whispering Trail
Benton Harbor, MI 49022
(269) 208-5302

