



OFFICE FOR LEASE

**982 S FRONT ST**

COLUMBUS, OH

**Ryan McHugh**

+1 614 940 2978  
ryan.mchughj@alliedre.com

**Dan Duns Moor SIOR**

+1 614 352 3556  
dan.dunsmoor@alliedre.com

**Manny Day**

+1 614 813 5156  
manny.day@alliedre.com

# Property Overview

Housed in a beautifully restored 1917 warehouse in The Brewery District, **The Jack** is a multi-award-winning adaptive reuse building. It's a recipient of both the AIA Ohio Honor Award for Design and the Columbus Landmarks Recchie Award. The space blends industrial character with a modern, open-concept creative floorplan built for collaboration and flexibility. Polished concrete floors, exposed brick, high ceilings, timber framing, and oversized warehouse windows create a bright, authentic loft atmosphere that feels both timeless and contemporary. Complementing its urban location, the property also offers free on-site parking, which is an increasingly rare amenity for similar buildings. **The Jack** is a one-of-a-kind office environment just south of downtown Columbus within walking distance to many restaurants, bars, parks and a trail system.

## Availability

	1st Floor
Space Size:	4,423 SF
Lease Rate*:	\$21.50/SF FSG

\* Utilities separately metered.

# Building Highlights



Creative Loft Office



Rooftop Terrace with Skyline Views



Award Winning Design



On-Site Parking



Historic Brewery District Location

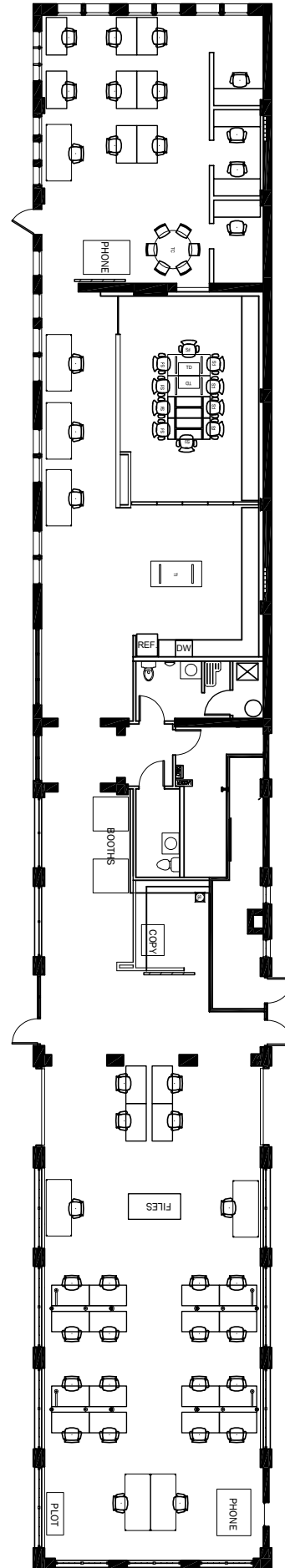


Original Industrial Details



# Floor Plan

**First Floor - 4,423 SF**  
Full Floor Available



Click here  
or scan QR  
Code to view  
a 360-degree  
tour of the 1st  
Floor.





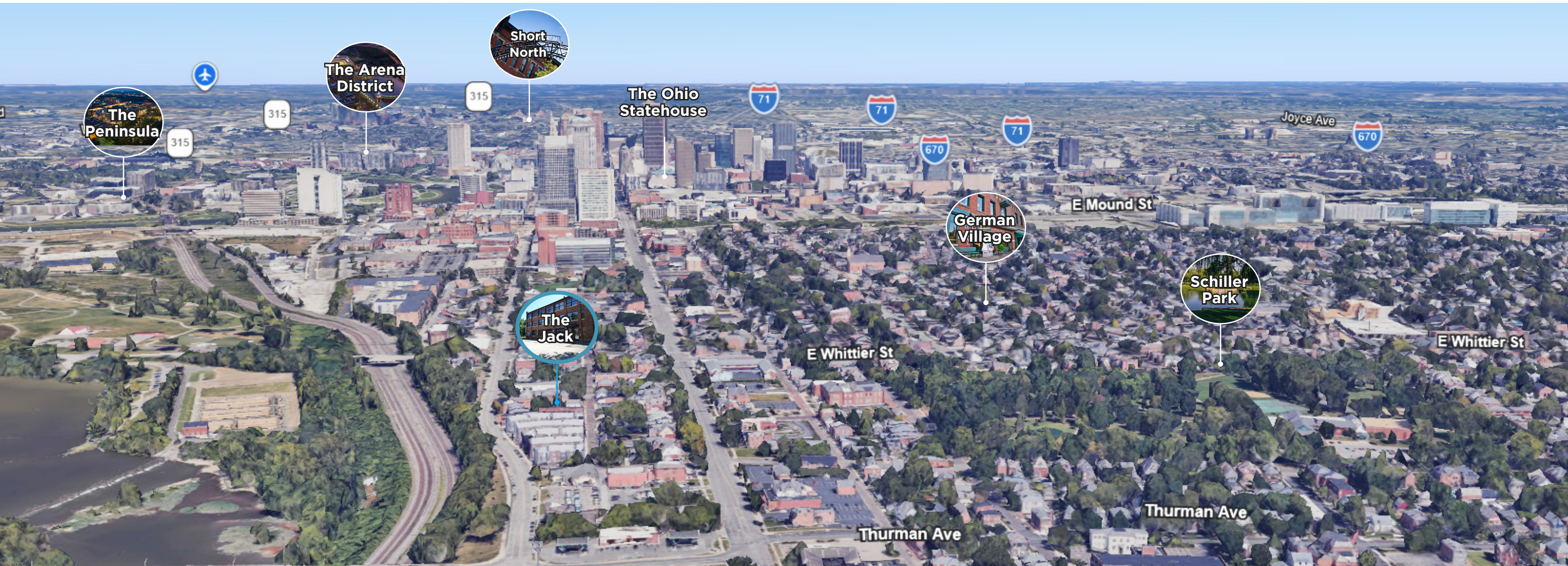
Access to Rooftop Patio Amenity



Free On-Site Surface Parking



# Location Overview



## Location Overview

The Brewery District is a historic urban neighborhood located just south of Downtown Columbus and adjacent to German Village. Originally established in the 1800s as the center of Columbus' brewing industry, the area was home to several major breweries. Many of the neighborhood's historic brick industrial buildings and warehouses still remain today, giving the district its distinctive character and architectural charm. In recent decades, the Brewery District has transformed into a mixed-use neighborhood, blending historic preservation with new development. The neighborhood is home to restaurants, bars, parks, and a trail system - all walkable from The Jack.

0.2 mi to German Village

1.2 mi to The Scioto Mile

1.5 mi to The Ohio Statehouse

3.2 mi to Short North

4.2 mi to The Ohio State University

4.7 mi to Grandview

9 mi to John Glenn Columbus International Airport

12 mi to Easton Town Center

# Nearby Amenities



315

### Franklinton

- BREWDOG
- LAND GRANT
- Little West Tavern
- cosi
- MAKERS SOCIAL
- one line coffee
- ROOSEVELT
- THE JUNTO
- NATIONAL VETERANS MEMORIAL AND MUSEUM
- MAUDINE'S
- brass eye
- STUDIO TORCH

### Downtown

- LATE NIGHT SLICE
- 16 BIT BAR+ARCADE
- Parable
- WESTIN HOTELS & RESORTS
- Residence INN BY HARRIOTT
- Holiday Inn
- BUTCHER & ROSE
- PINS
- Sheraton
- LEVEQUE
- CONDADO
- MITCHELL'S STEAKHOUSE
- Hank's
- SPECK
- Chouette
- Jackie O'S
- THE KEEP
- veritas
- OLGA RIDGE BREWING
- HYATT
- Hilton
- canopy
- GOODALE STATION

**Current Freeway Renovation**  
 \$1.5 billion revamp of I-70 and I-71 which will diminish safety concerns and congestion problems surrounding downtown

### Brewery District

- CHIPOTLE MEXICAN GRILL
- FIRST WATCH
- Arepazo
- Starbucks
- Local Cantina
- Holiday Inn Express
- agni
- emmett's
- COBRA
- Kroger
- Harvest Pizzeria
- TACO BELL
- Wendy's
- JJ
- NOCTERRA BREWING CO.
- AON
- Low Bird

### German Village

- KITTIE'S
- snap 24/7 fitness
- THE BOOK LOFT
- STARBUCKS
- CENTO
- CHAPMAN'S eatmarket
- WINANS CHOCOLATES + COFFEES
- the Brown Bag DELICATESSEN
- Lindley's
- Venacular
- SYCAMORE
- barcelona
- Schmidt's SAUSAGE HAUS
- Club 185
- MOHAWK
- THURMAN CAFE

982 S Front St



# Award Winning Building

The Jack is a multi-award-winning adaptive reuse of a 1917 warehouse, originally home to the Columbus Jack Corporation. Fully renovated in 2010 as the home of acclaimed architecture and design firm WSA Studios, the building earned both the AIA Ohio Honor Award for Design and the Columbus Landmarks Recchie Award for its innovative reuse and architectural character.

Original details remain showcased throughout; exposed brick walls, timber framing, polished concrete floors, and oversized warehouse windows preserve the building's industrial origins while flooding the space with natural light. Today it offers tenants a one-of-a-kind office environment where industrial heritage and thoughtful modern design come together.





500 S Front St, Suite 980  
Columbus, OH 43215

[www.alliedre.com](http://www.alliedre.com)

---

**Ryan McHugh**

+1 614 940 2978  
[ryan.mchughj@alliedre.com](mailto:ryan.mchughj@alliedre.com)

**Dan Dunsmoor SIOR**

+1 614 352 3556  
[dan.dunsmoor@alliedre.com](mailto:dan.dunsmoor@alliedre.com)

**Manny Day**

+1 614 813 5156  
[manny.day@alliedre.com](mailto:manny.day@alliedre.com)

Ownership Disclosure: Agents have an ownership interest in the property.

Copyright © 2025 Allied Real Estate Advisors. This document has been prepared by Allied Real Estate Advisors for advertising and general information only. Allied makes no guarantees, representations or warranties of any kind, expressed or implied, regarding the information including, but not limited to, warranties of content, accuracy and reliability. Any interested party should undertake their own inquiries as to the accuracy of the information. Allied excludes unequivocally all inferred or implied terms, conditions and warranties arising out of this document and excludes all liability for loss and damages arising there from.