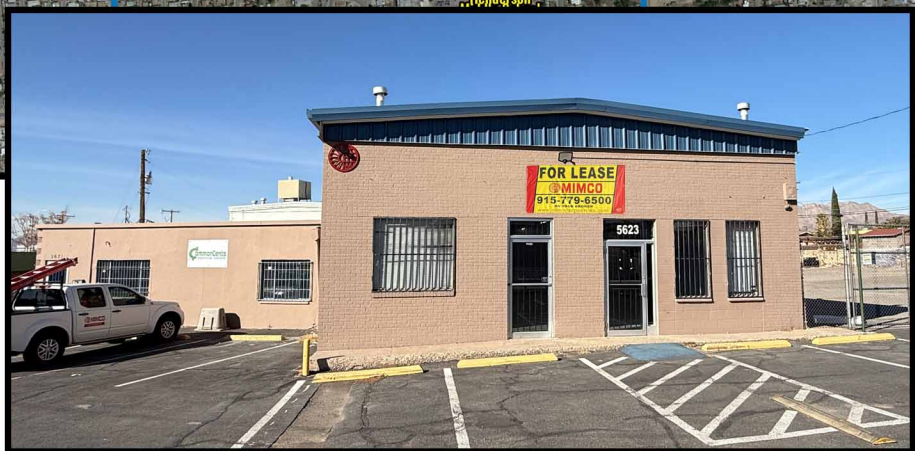
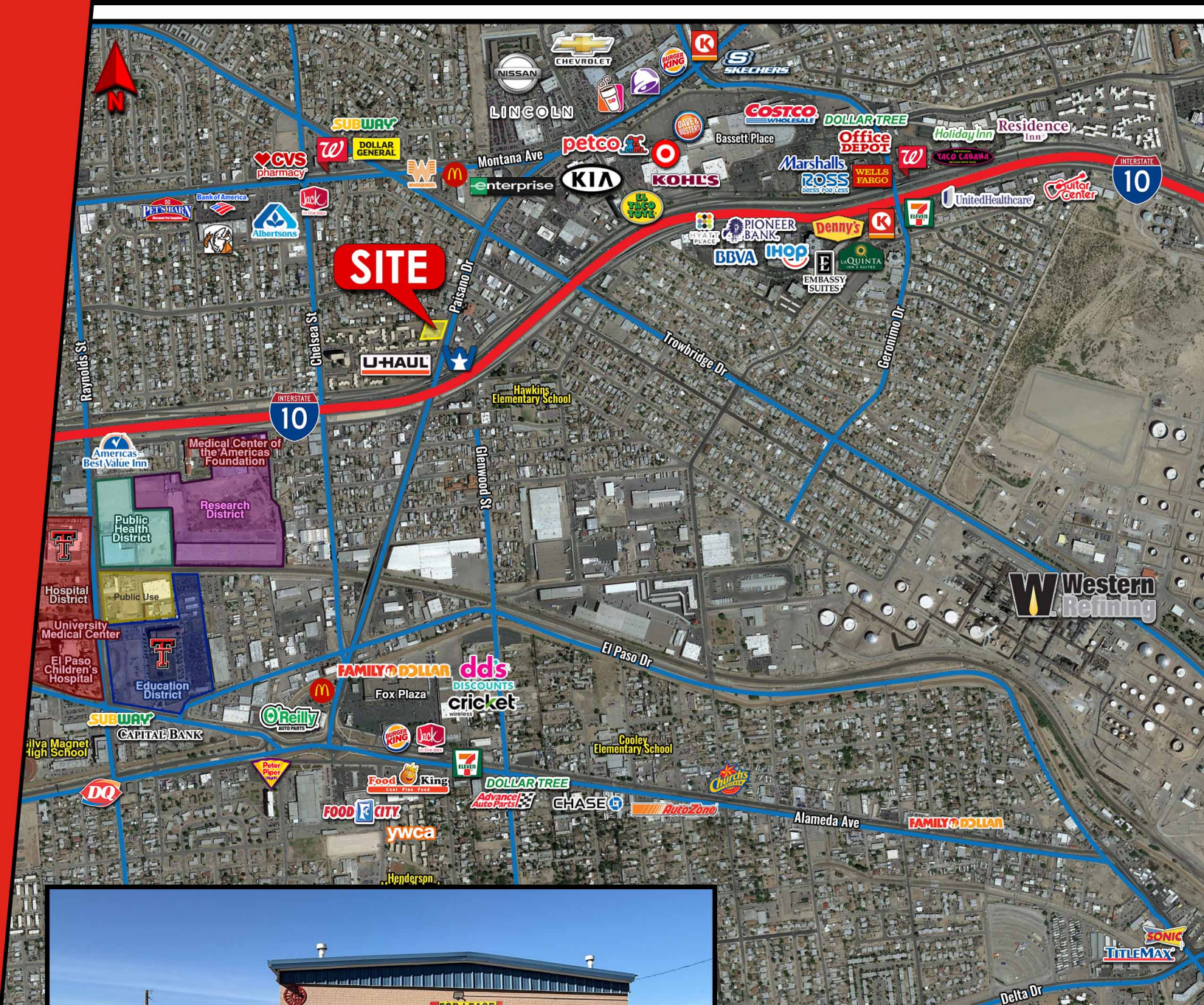




MIMCO

Commercial Real Estate Management & Investments

**5621-5627 PAISANO
EL PASO, TX**



FOR LEASE
Retail • Warehouse • Office / Showroom

 **MIMCO**
Commercial Real Estate Management & Investments

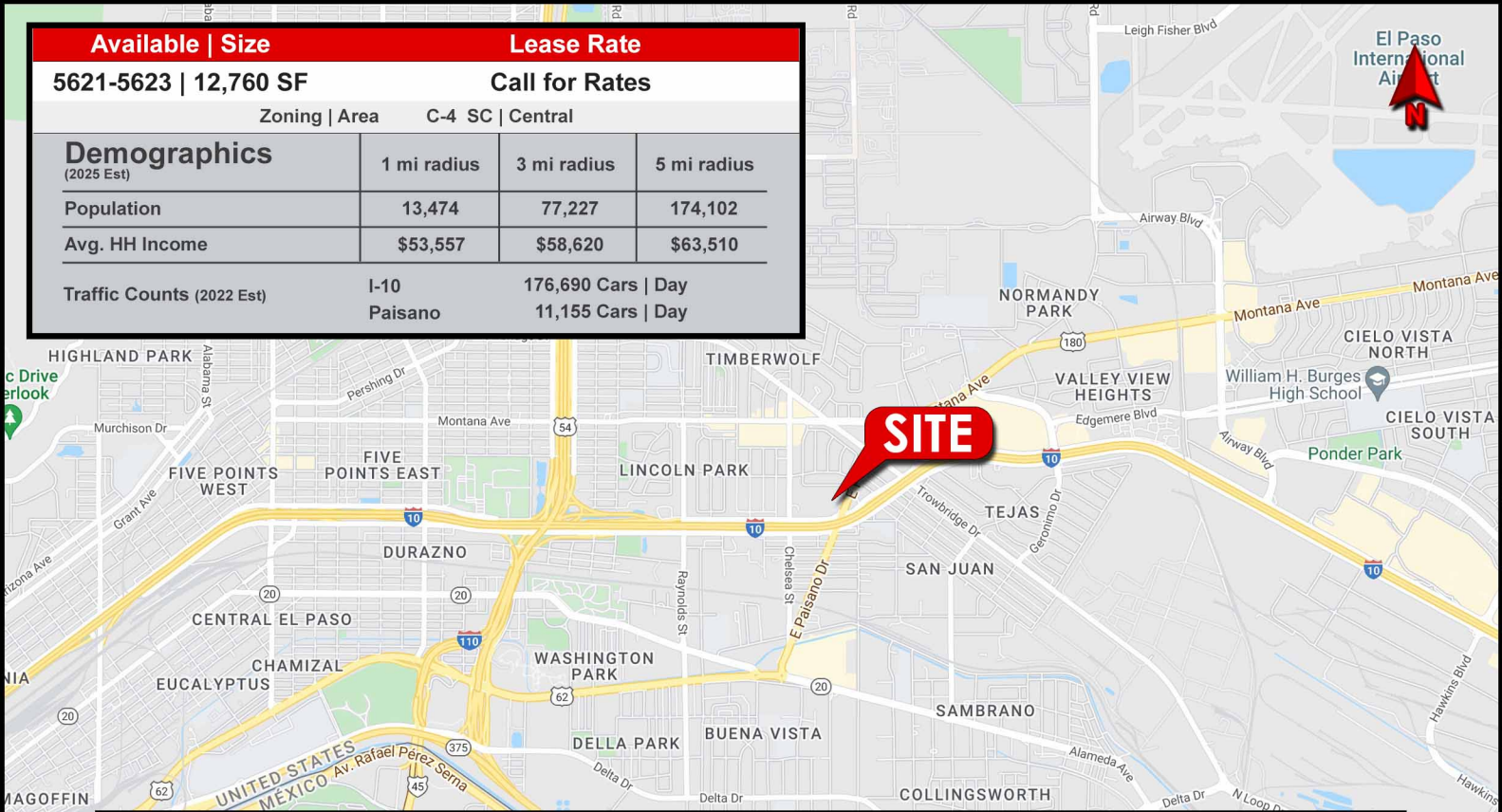
(915) 779-6500
leasing@mimcoproperties.com

WWW.MIMCOPROPERTIES.COM

5621-5627 PAISANO

EL PASO, TX

Available Size		Lease Rate	
5621-5623 12,760 SF		Call for Rates	
Zoning Area		C-4 SC Central	
Demographics (2025 Est)	1 mi radius	3 mi radius	5 mi radius
Population	13,474	77,227	174,102
Avg. HH Income	\$53,557	\$58,620	\$63,510
Traffic Counts (2022 Est)	I-10 Paisano	176,690 Cars Day 11,155 Cars Day	



*All information contained herein has been obtained from sources deemed reliable and is submitted subject to errors, omissions, changes of terms and conditions, prior sale, lease or financing or withdrawal without notice.