

REVISIONS

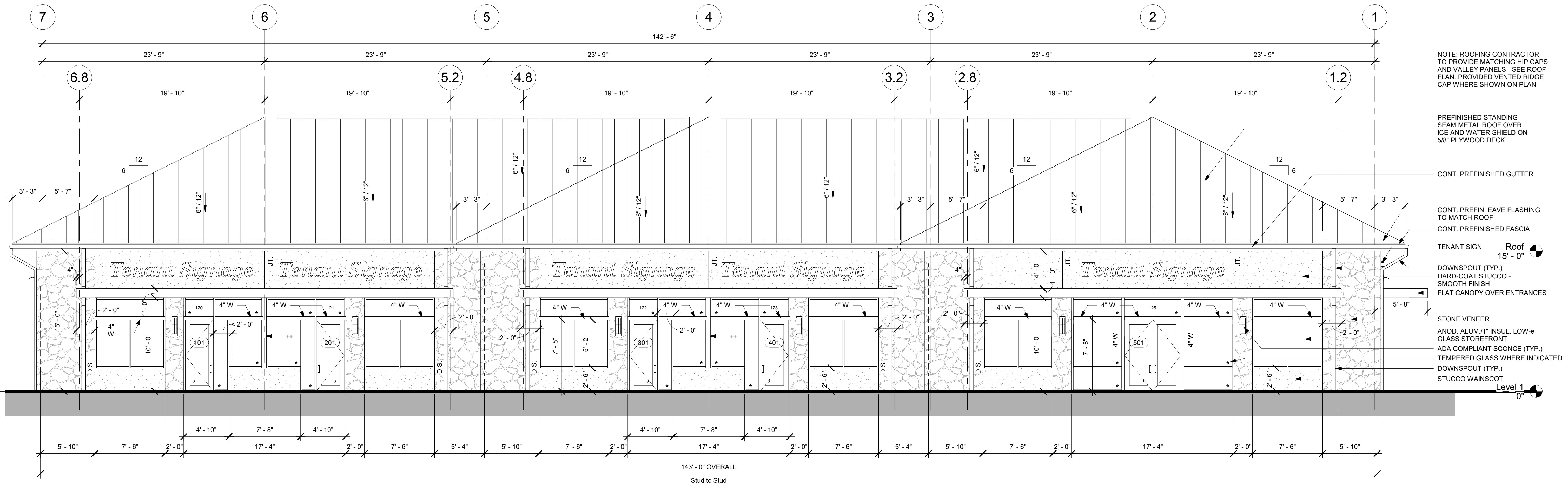
FOR REVIEW ONLY

FISHER
Fisher Architects, PA
351 Merrimon Avenue
Asheville, NC 28801
Copyright 2022, Fisher Architects, PA (828) 253-8265

Office/Retail Building #3
for OK Properties, LLC

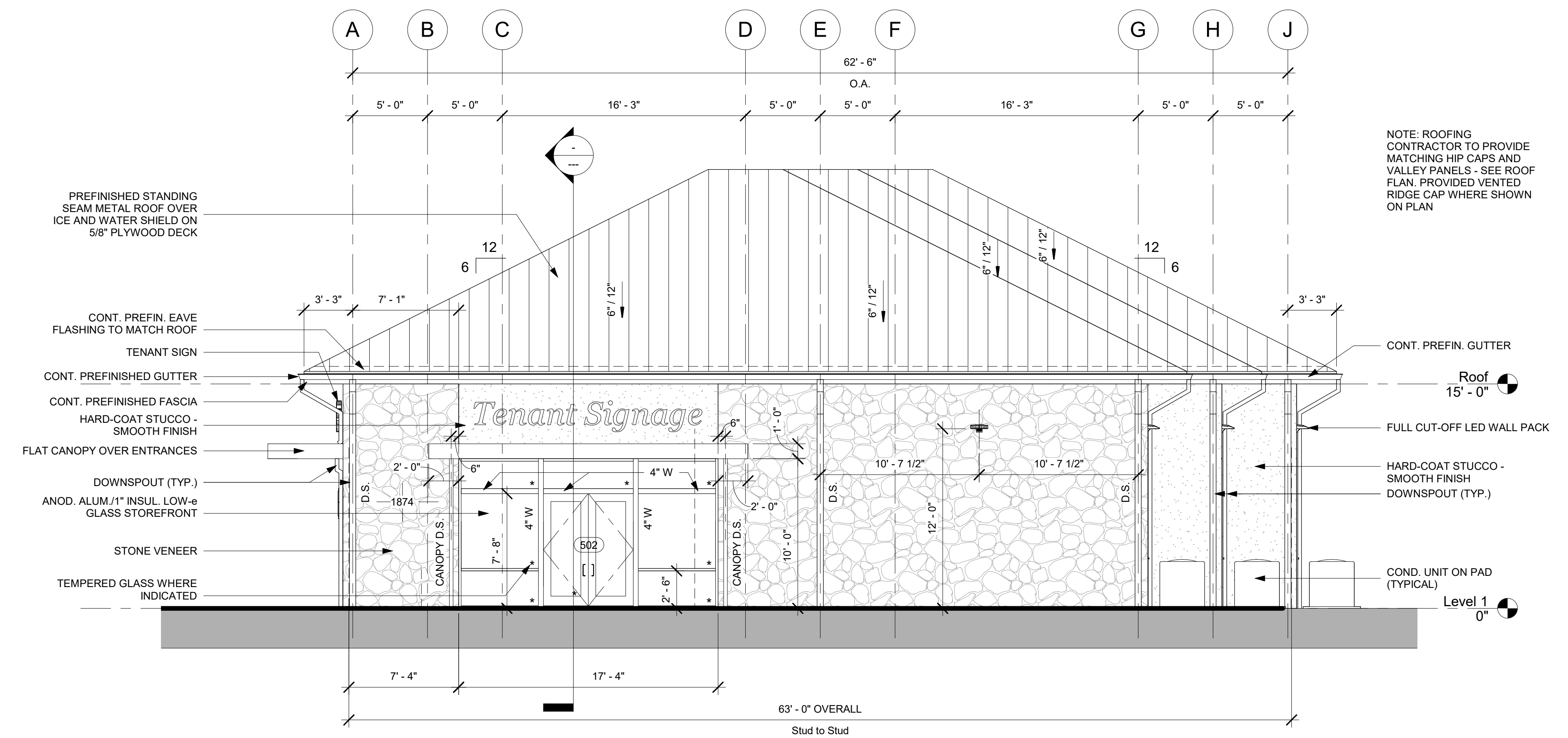
SHEET TITLE
Retail #3 - Exterior Elevations
DATE 01.05.22
JOB NO. 20-0930
SHEET A2C.1

1874 Brevard Road (NC 191) at Amethyst Circle Arden, NC 28704



++ PROVIDE BREAK METAL WRAP TO MATCH STOREFRONT AT COLUMN AND END OF DEMISING WALL BEYOND

1 Retail #1 - Front/North Elevation
3/16" = 1'-0"



2 Retail #1 - Right-side/Street Elev.
3/16" = 1'-0"

- NOTE: ROOFING CONTRACTOR TO PROVIDE MATCHING HIP CAPS AND VALLEY PANELS - SEE ROOF PLAN. PROVIDED VENTED RIDGE CAP WHERE SHOWN ON PLAN
- PREFINISHED STANDING SEAM METAL ROOF OVER ICE AND WATER SHIELD ON 5/8" PLYWOOD DECK
- CONT. PREFINISHED GUTTER
- CONT. PREFIN. EAVE FLASHING TO MATCH ROOF
- CONT. PREFINISHED FASCIA
- TENANT SIGN
- ROOF 15'-0"
- DOWNSPOUT (TYP.)
- HARD-COAT STUCCO - SMOOTH FINISH
- FLAT CANOPY OVER ENTRANCES
- STONE VENEER
- ANOD. ALUM./1" INSUL. LOW-e GLASS STOREFRONT
- ADA COMPLIANT SCONCE (TYP.)
- TEMPERED GLASS WHERE INDICATED
- DOWNSPOUT (TYP.)
- STUCCO WAINSCOT
- Level 1 0"

- PREFINISHED STANDING SEAM METAL ROOF OVER ICE AND WATER SHIELD ON 5/8" PLYWOOD DECK
- CONT. PREFIN. EAVE FLASHING TO MATCH ROOF
- TENANT SIGN
- CONT. PREFINISHED GUTTER
- CONT. PREFINISHED FASCIA
- HARD-COAT STUCCO - SMOOTH FINISH
- FLAT CANOPY OVER ENTRANCES
- DOWNSPOUT (TYP.)
- ANOD. ALUM./1" INSUL. LOW-e GLASS STOREFRONT
- STONE VENEER
- TEMPERED GLASS WHERE INDICATED

- NOTE: ROOFING CONTRACTOR TO PROVIDE MATCHING HIP CAPS AND VALLEY PANELS - SEE ROOF PLAN. PROVIDED VENTED RIDGE CAP WHERE SHOWN ON PLAN
- CONT. PREFIN. GUTTER
- ROOF 15'-0"
- FULL CUT-OFF LED WALL PACK
- HARD-COAT STUCCO - SMOOTH FINISH
- DOWNSPOUT (TYP.)
- COND. UNIT ON PAD (TYPICAL)
- Level 1 0"