

Four Industrial/Flex Units For Lease in Lakewood

12860 W CEDAR DRIVE | LAKEWOOD 80228

Units 100B, 102/103, 200A

Size: 1,500-3,475 SF

Rate: \$12/SF + \$7.28 NNN

Available: Now

FLEX & THE CITY

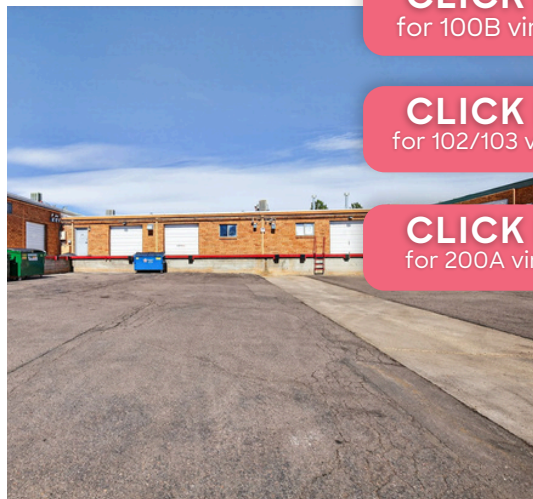
Versatility is the main character here. 12860 W Cedar Drive offers industrial/flex units that pair office space for big ideas with warehouse room to keep the wheels turning. Select suites include 10-foot dock-high doors for smooth loading and logistics, while the location just off Hwy 6 and Hwy 391 keeps your team, trucks, and clients moving with ease. It's a flexible setup built for businesses that like to keep things efficient—and maybe a little stylish. A little office, a little warehouse, because sometimes you really can have it all...

PROPERTY HIGHLIGHTS

- Conveniently located off of Hwy 6 and Hwy 391
- Unit 100B features 10' by 8' dock-high door, a temperature-controlled warehouse, & two private offices
- Unit 200A features 10' by 8' dock-high door & temperature-controlled warehouse
- Unit 102/103 features reception, mix of private offices, open flex space, and a kitchenette



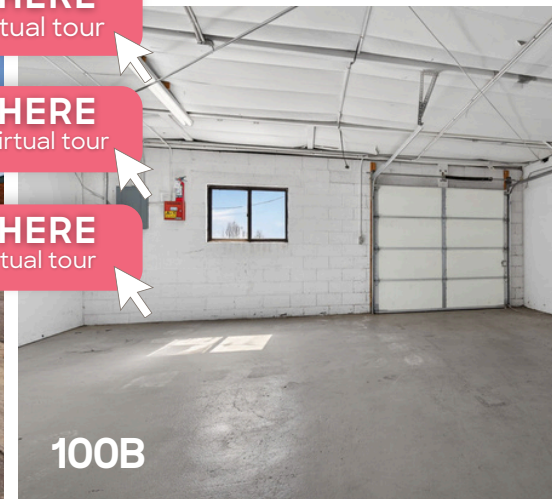
102/103



[CLICK HERE](#)
for 100B virtual tour

[CLICK HERE](#)
for 102/103 virtual tour

[CLICK HERE](#)
for 200A virtual tour

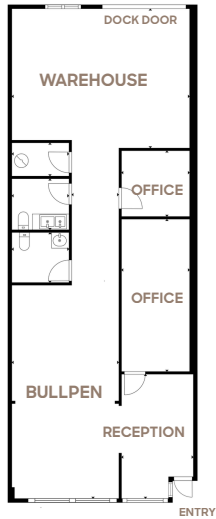


100B



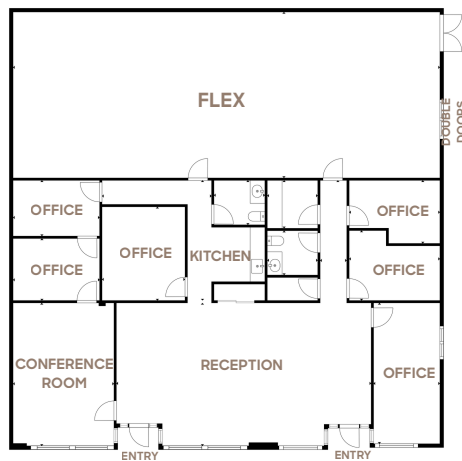
LEARN MORE ABOUT THIS PROPERTY
MarketRealEstate.com

100B 1,500 SF



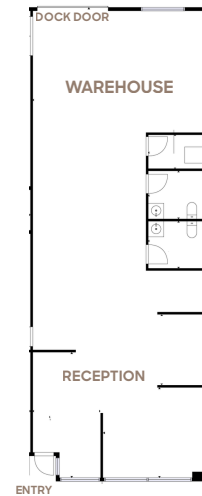
[CLICK HERE](#)
for 100B virtual tour

102/103 3,475 SF



[CLICK HERE](#)
for 102/103 virtual tour

200A 1,500 SF



[CLICK HERE](#)
for 200A virtual tour



LEARN MORE ABOUT THIS PROPERTY
MarketRealEstate.com

BRITTANY BOUDREAU
303 444 0566
Brittany@MarketRealEstate.com

TODD WALSH, CCIM
303 444 5040
Todd@MarketRealEstate.com

