

50750 E. RUSSELL SCHMIDT  
CHESTERFIELD TWP., MICHIGAN

INDUSTRIAL FOR LEASE  
78,900 Square Feet Available



**SIGNATURE  
ASSOCIATES**  
KNOW SIGNATURE | KNOW RESULTS

## SCHMIDT INDUSTRIAL PARK



### PROPERTY FEATURES

- 78,900 square feet available
- 5,000 square feet of office
- 15' -20' clear height
- (1) 12' x 14' grade level doors, (5) truckwells
- Zoned M-2, Heavy Manufacturing
- 6.43 acres
- Fully fenced and secured lot
- Taxes are only \$0.51 per square foot
- Heavy power distribution – buss duct
- Lease Rate: \$5.50/sq.ft. NNN



For more information, please contact:

**BEN WILKIEMEYER**  
(248) 359 0624

[bwilkiemeyer@signatureassociates.com](mailto:bwilkiemeyer@signatureassociates.com)

**PAUL SAAD**  
(248) 359 0652

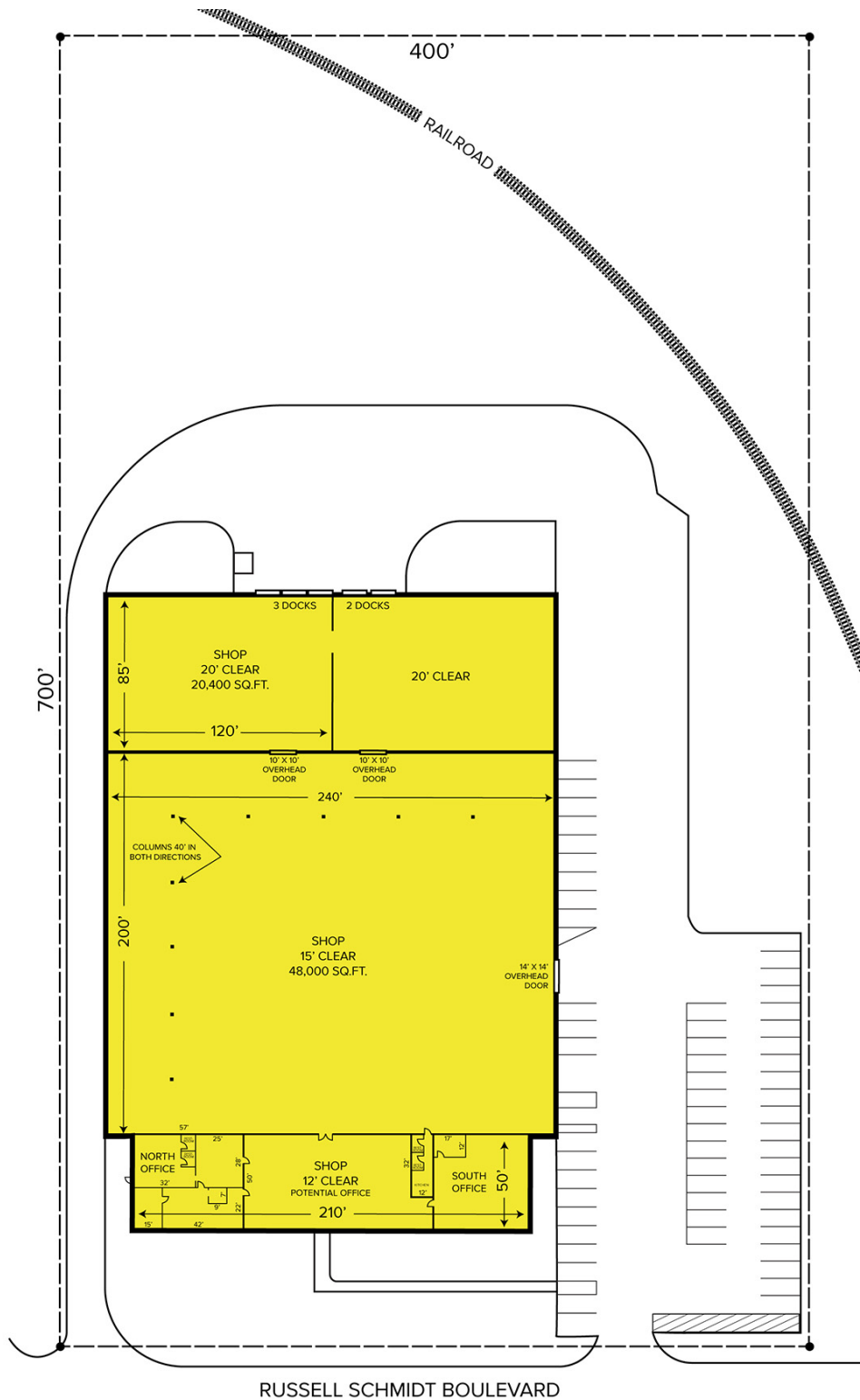
[psaad@signatureassociates.com](mailto:psaad@signatureassociates.com)

**SIGNATURE ASSOCIATES**  
One Towne Square, Suite 1200  
Southfield, MI 48076  
[www.signatureassociates.com](http://www.signatureassociates.com)

# 50750 E. Russell Schmidt – Chesterfield Twp., Michigan Industrial For Lease

78,900  
Square Feet  
AVAILABLE

## Site Plan



For more information, please contact:

**BEN WILKIEMEYER**

(248) 359 0624

[bwilkiemeyer@signatureassociates.com](mailto:bwilkiemeyer@signatureassociates.com)

**PAUL SAAD**

(248) 359 0652

[psaad@signatureassociates.com](mailto:psaad@signatureassociates.com)

**SIGNATURE ASSOCIATES**

One Towne Square, Suite 1200

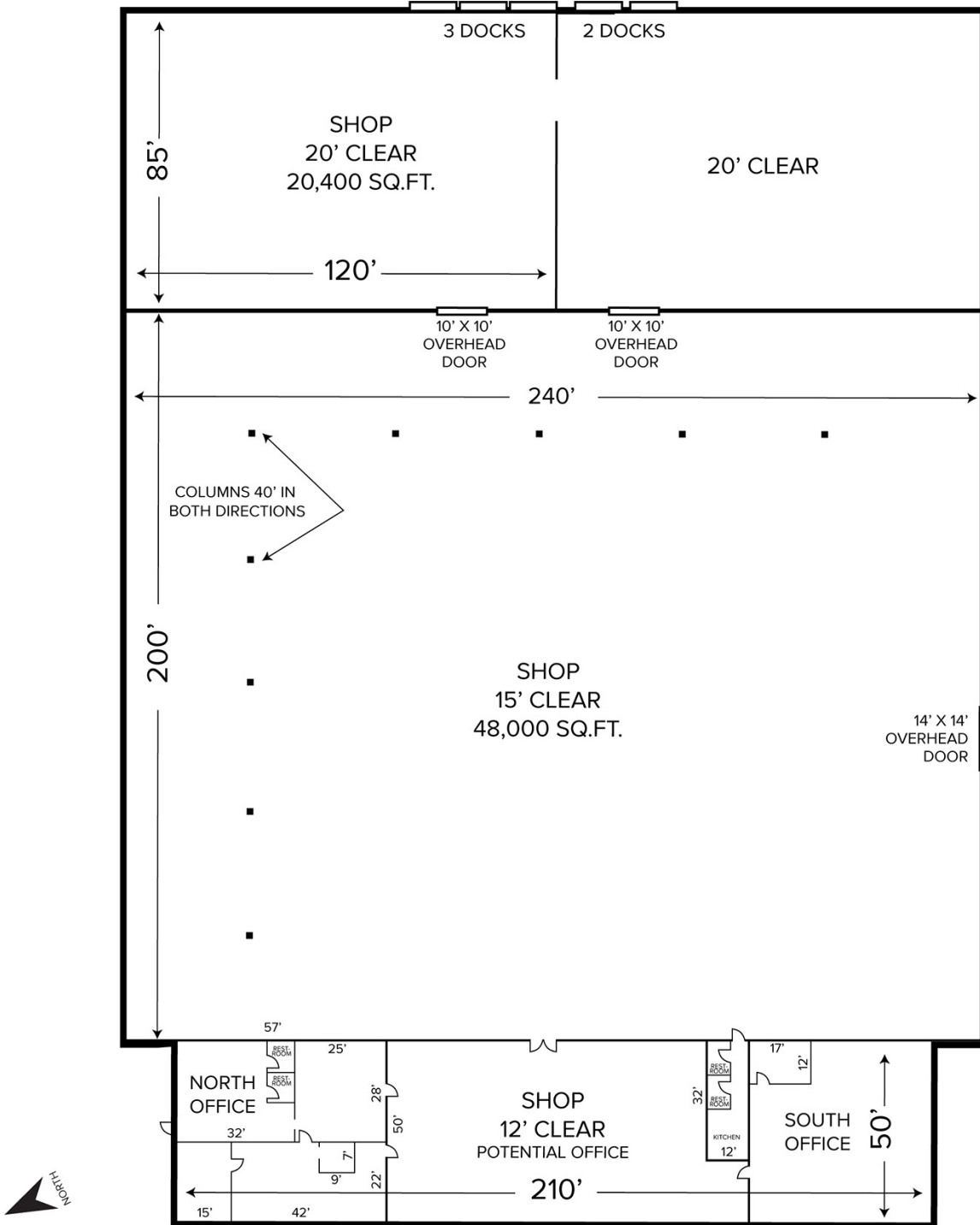
Southfield, MI 48076

[www.signatureassociates.com](http://www.signatureassociates.com)

# 50750 E. Russell Schmidt – Chesterfield Twp., Michigan Industrial For Lease

78,900  
Square Feet  
AVAILABLE

## Floor Plan



For more information, please contact:

**BEN WILKIEMEYER**

(248) 359 0624

[bwilkiemeyer@signatureassociates.com](mailto:bwilkiemeyer@signatureassociates.com)

**PAUL SAAD**

(248) 359 0652

[psaad@signatureassociates.com](mailto:psaad@signatureassociates.com)

**SIGNATURE ASSOCIATES**

One Towne Square, Suite 1200

Southfield, MI 48076

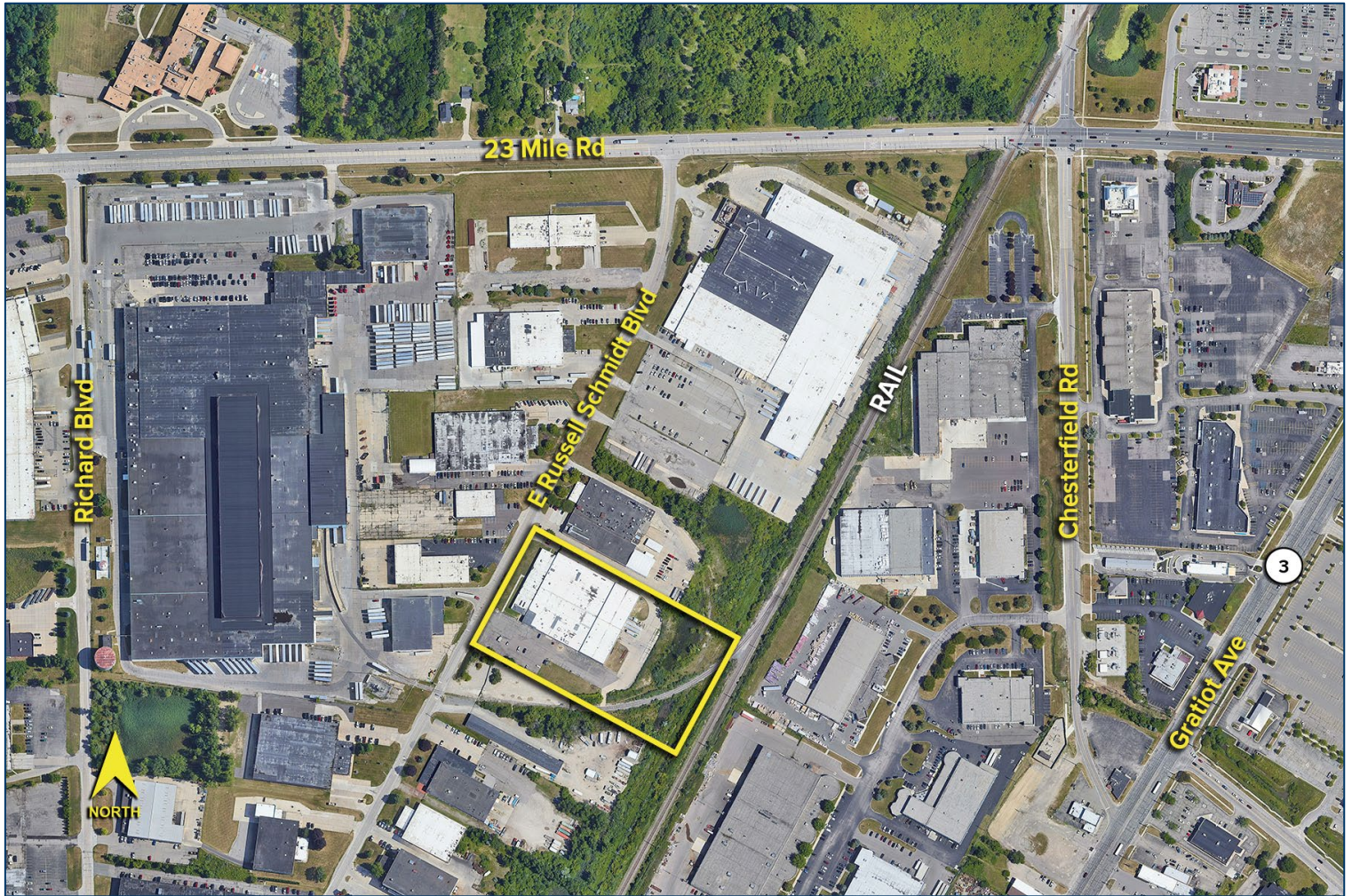
[www.signatureassociates.com](http://www.signatureassociates.com)

# 50750 E. Russell Schmidt – Chesterfield Twp., Michigan

## Industrial For Lease

78,900  
Square Feet  
AVAILABLE

Aerial



For more information, please contact:

**BEN WILKIEMEYER**

(248) 359 0624

[bwilkiemeyer@signatureassociates.com](mailto:bwilkiemeyer@signatureassociates.com)

**PAUL SAAD**

(248) 359 0652

[psaad@signatureassociates.com](mailto:psaad@signatureassociates.com)

**SIGNATURE ASSOCIATES**

One Towne Square, Suite 1200

Southfield, MI 48076

[www.signatureassociates.com](http://www.signatureassociates.com)