



Office For Lease

Lease Rate:

**\$22** PSF | Full Service

Contact:

**James Bullington**  
Executive Vice President  
+1 801 836 2400  
james.bullington@colliers.com

---

**Colliers**  
2100 Pleasant Grove Blvd., Suite 200  
Pleasant Grove, UT 84062  
Main: +1 801 947 8300  
colliers.com

# Altabank Office Pleasant Grove

2174 W Grove Pkwy Suite 100  
Pleasant Grove, Utah 84062

**Property Information**

- Centrally located off Pleasant Grove Blvd
- Immediate access to I-15
- Ample parking
- An abundance of amenities within walking distance.
- Suite 100: 6,897 SF

Lease Rate: \$ 22.00 PSF | Full Service

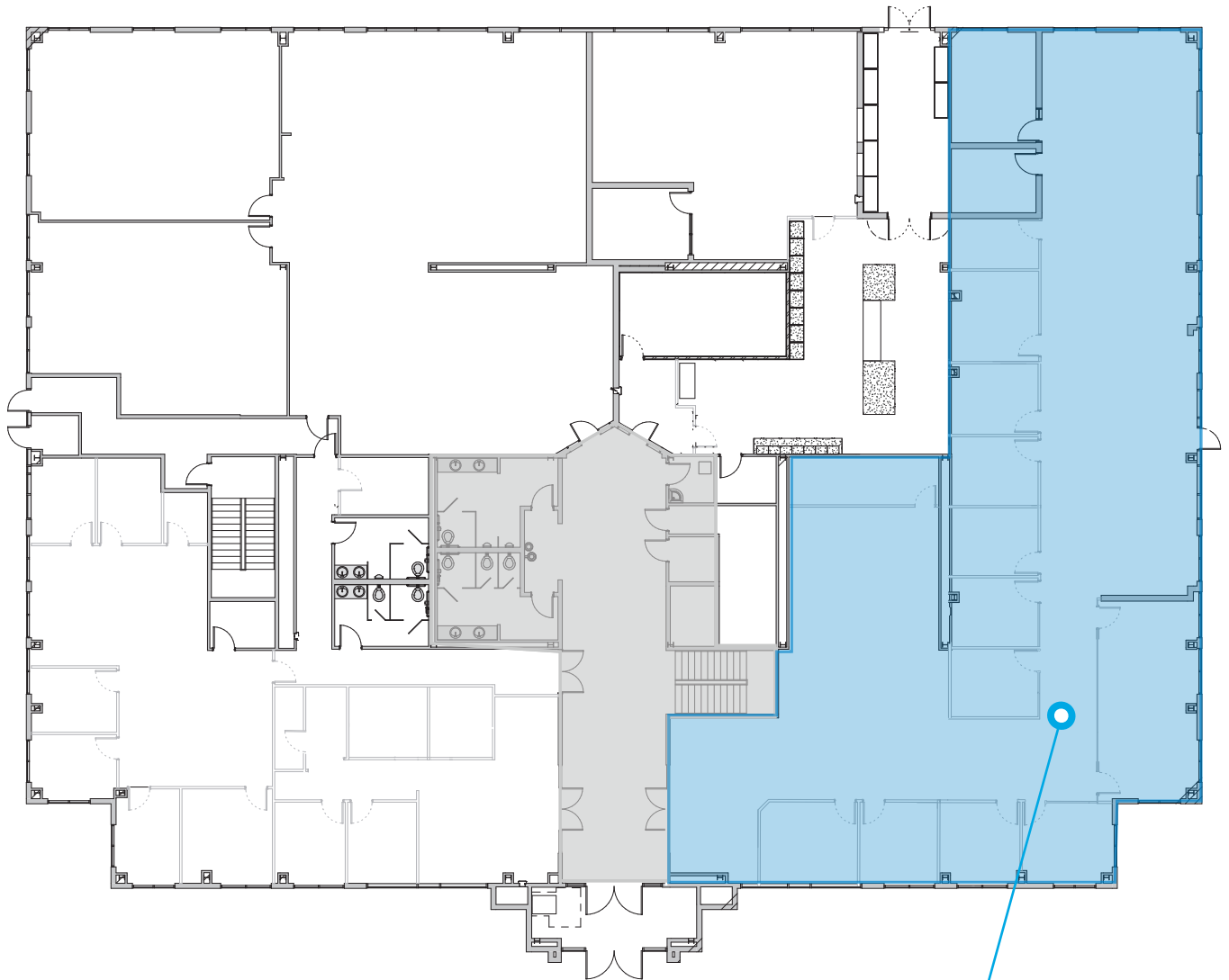
Total Available: 6,897 SF

# Floor Plan

**Total SF: 8,151 SF**

- Suite 100: 6,897 SF

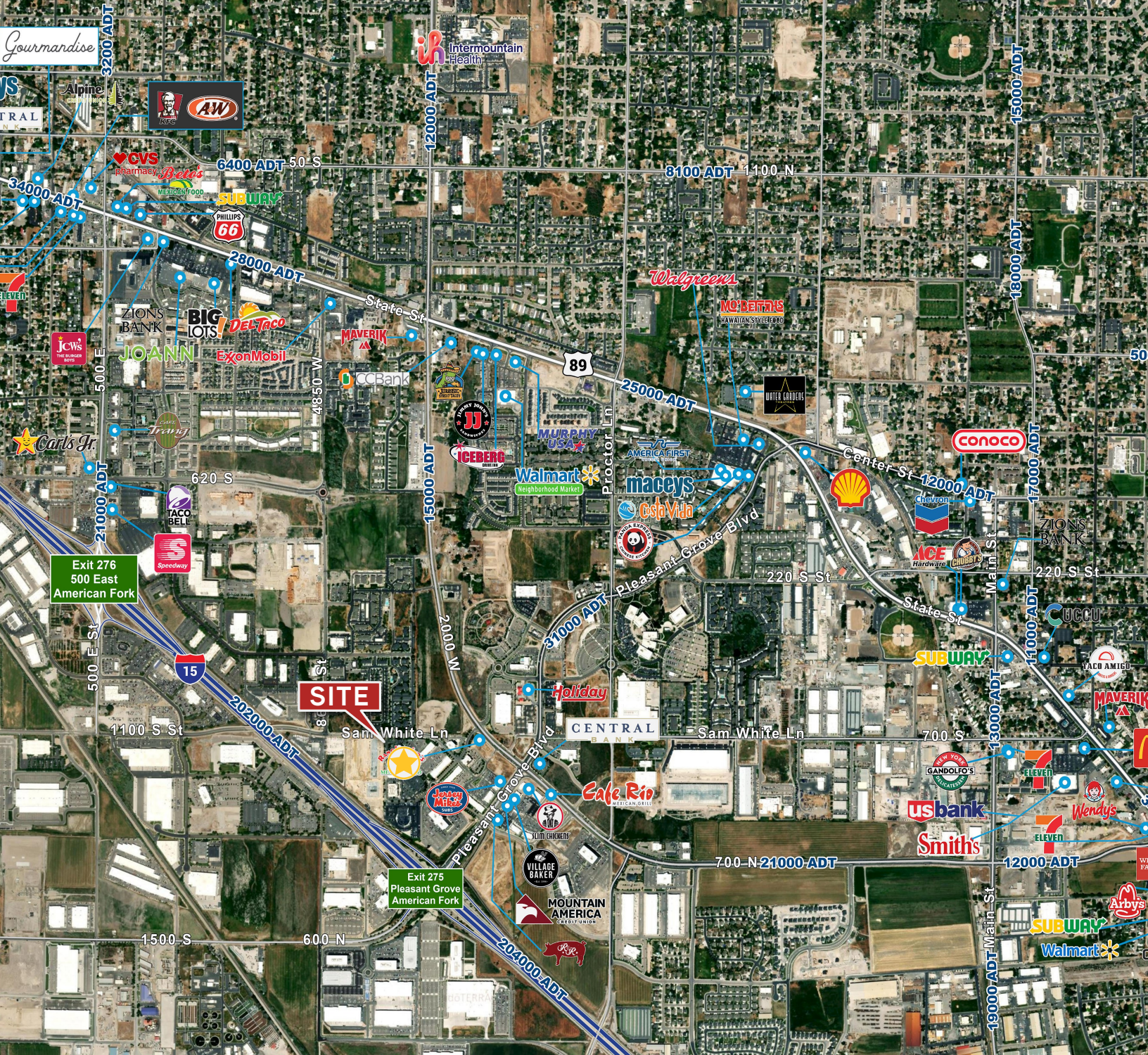
- Available
- Common Area
- Leased



Suite 100 - 6,897 SF

# Pictures





**Colliers**  
 2100 Pleasant Grove Blvd., Suite 200  
 Pleasant Grove, UT 84062  
 Main: +1 801 947 8300  
 colliers.com

**Dan Donaldson**  
 Executive Vice President  
 +1 801 836 3600  
 dan.donaldson@colliers.com

**James Bullington**  
 Executive Vice President  
 +1 801 836 2400  
 james.bullington@colliers.com

This document has been prepared by Colliers International for advertising and general information only. Colliers International makes no guarantees, representations or warranties of any kind, expressed or implied, regarding the information including, but not limited to, warranties of content, accuracy and reliability. Any interested party should undertake their own inquiries as to the accuracy of the information. Colliers International excludes unequivocally all inferred or implied terms, conditions and warranties arising out of this document and excludes all liability for loss and damages arising there from. This publication is the copyrighted property of Colliers International and/or its licensor(s). ©2026. All rights reserved.