

EXCLUSIVE LISTING!

0.62 +/- ac. Commercial Land - \$495,000
at Boulder Highway & S. Nellis Blvd, Las Vegas, NV 89121



- APN # 161-20-502-011
- 0.62 +/- Acres
- Unincorporated Clark County-Paradise jurisdiction
- Zoned CG-Commercial General
- Planned Land Use-CM- Corridor Mixed-Use
- Property Taxes- \$1,178.19
- Near Casino resorts, commercial businesses and residences
- Improved street with curbs and gutters, utilities nearby



Mark Anthony Rua
Brokers

S.026655

Office: 702-992-7534
Cell: 702-595-6244

2855 St Rose Parkway, Suite 100, Henderson, NV 89052
markanthonyrua@gmail.com www.mrlandlasvegas.com



The information contained herein is subject to verification and no liability for errors or omissions is assumed. The price, data, and other information are subject to change or the listing may be withdrawn without notice.

0.62 +/- ac. Commercial Land - \$495,000

Parcel Dimensions



Mark Anthony Rua
Brokers

2855 St Rose Parkway, Suite 100, Henderson, NV 89052
markanthonyrua@gmail.com www.mrlandlasvegas.com

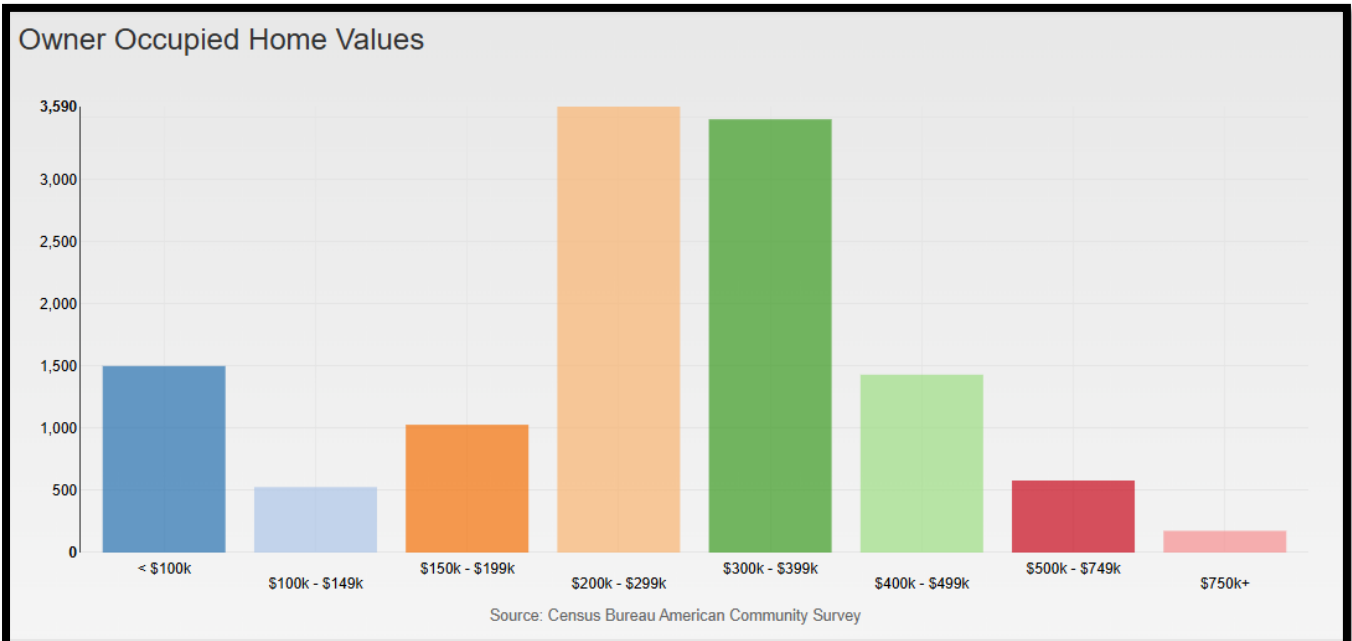
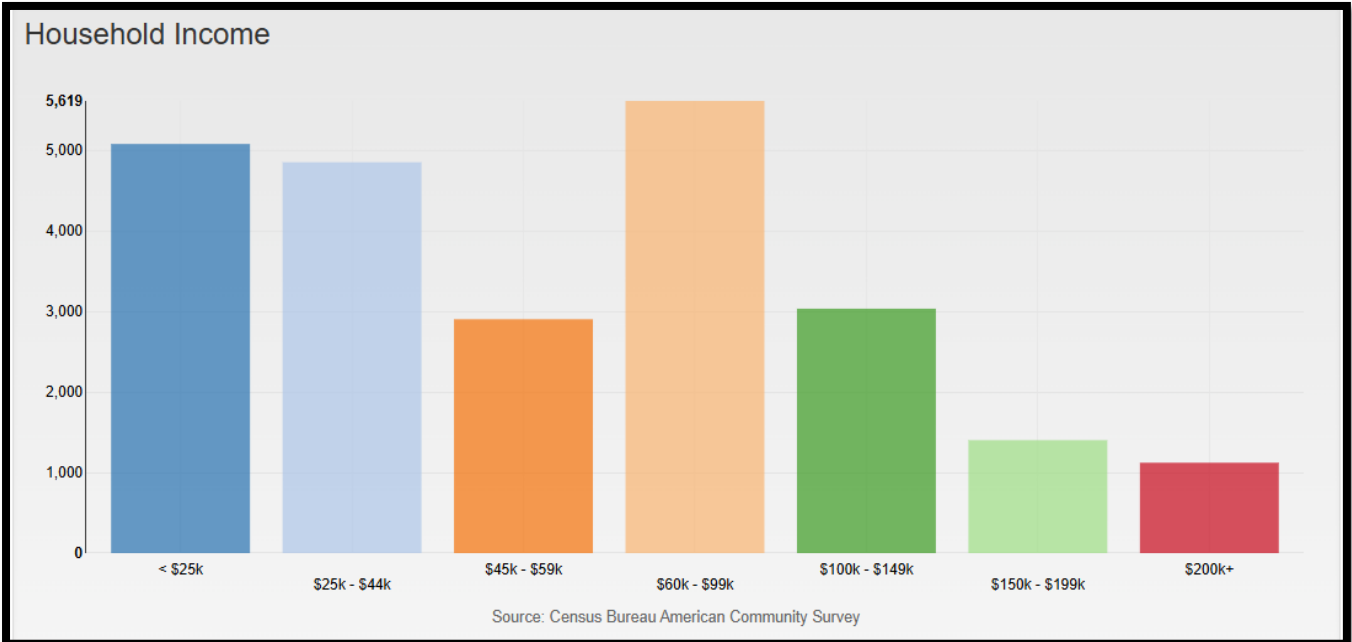
Office: 702-992-7534
Cell: 702-595-6244



The information contained herein is subject to verification and no liability for errors or omissions is assumed. The price, data, and other information are subject to change or the listing may be withdrawn without notice.

0.62 +/- ac. Commercial Land - \$495,000

Zip Code-89121
Demographics



Mark Anthony Rua
Brokers

2855 St Rose Parkway, Suite 100, Henderson, NV 89052
markanthonyrua@gmail.com www.mrlandlasvegas.com

Office: 702-992-7534
Cell: 702-595-6244





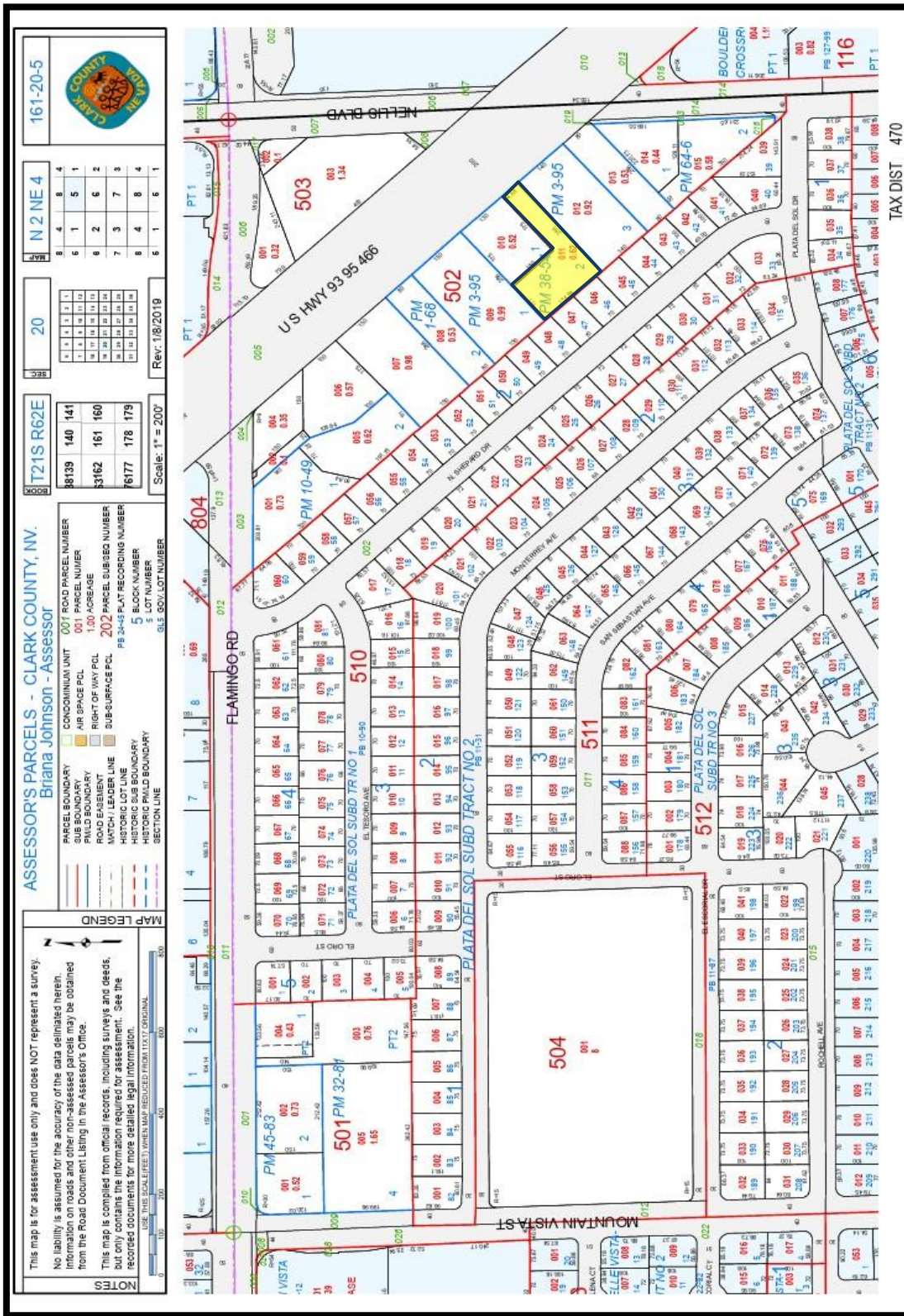
Mark Anthony Rua
ERA Brokers

2855 St Rose Parkway, Suite 100, Henderson, NV 89052
markanthonyrua@gmail.com www.mrlandlasvegas.com

Office: 702-992-7534
 Cell: 702-595-6244



The information contained herein is subject to verification and no liability for errors or omissions is assumed. The price, data, and other information are subject to change or the listing may be withdrawn without notice.



0.62 +/- ac. Commercial Land