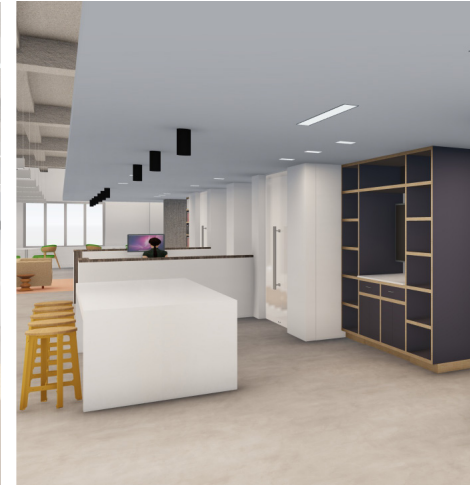


712 Main  
Floor 1600  
Rendering

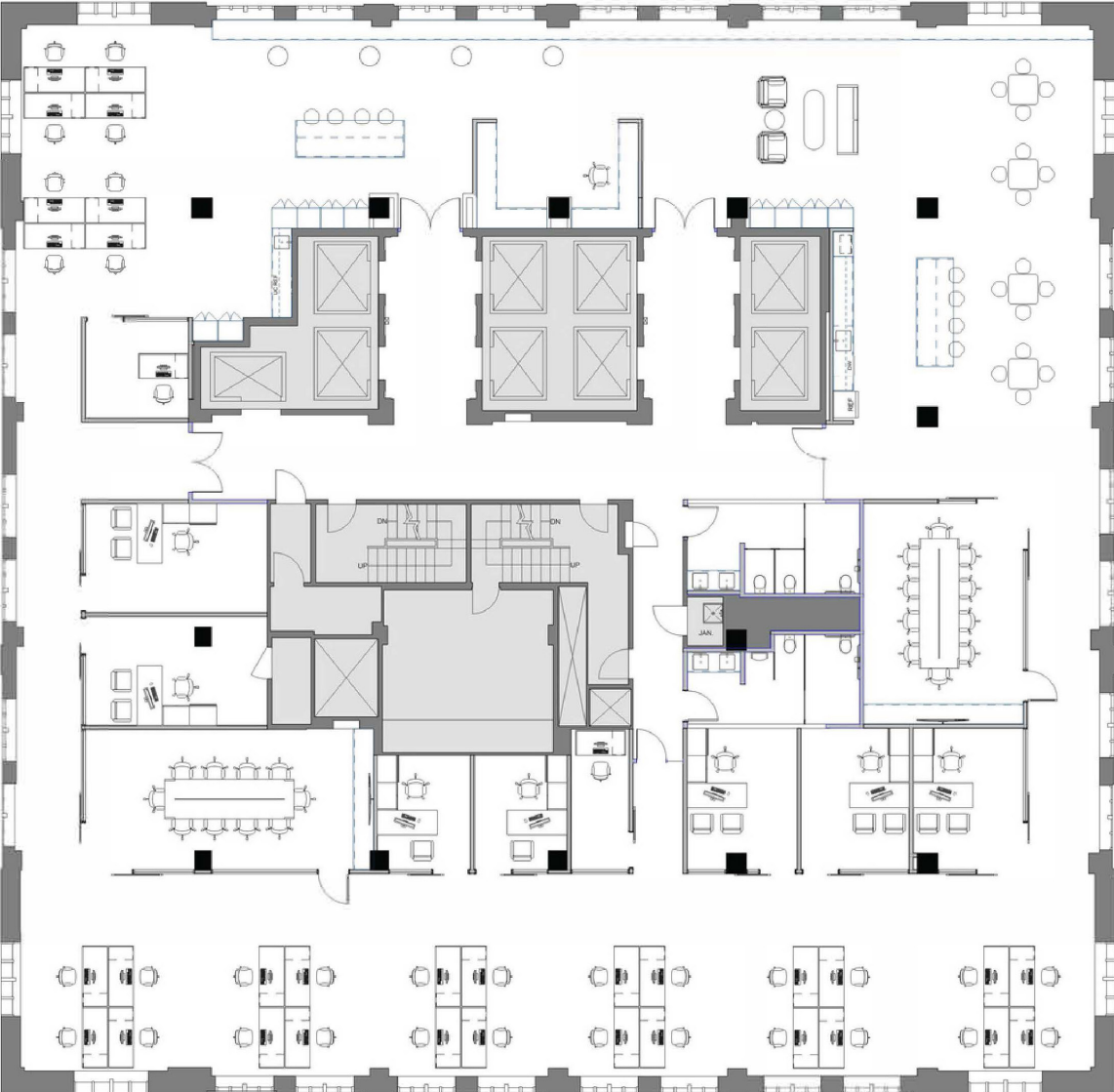


VINCE STRAKE  
713 405 7476  
vince.strake@partnersrealestate.com

LESLEY RICE  
713 275 9611  
lesley.rice@partnersrealestate.com



712 Main  
Floor 1600  
Space Plan



Level 16 - 10,754 NRA

VINCE STRAKE  
713 405 7476  
vince.strake@partnersrealestate.com

LESLEY RICE  
713 275 9611  
lesley.rice@partnersrealestate.com



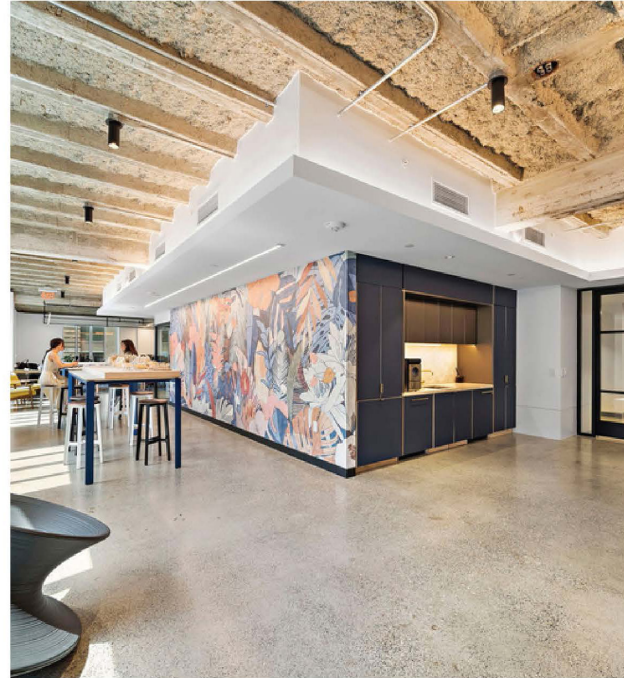
# 712 Main Floor 1600

Finish Palette - Spec Suite

Paint



Room Scene



Plam/SS



Accent



Felt wallcovering TBD

Carpet

Mohawk Micro Bloom II



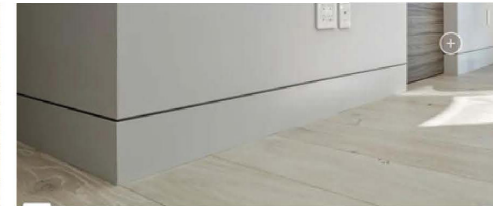
Sealed Concrete

By GC



Recessed Base

By GC



# 712 Main Floor 1600

## Finish Palette - Restrooms



### Paint



Benjamin Moore -  
Shoreline

### Plam/SS

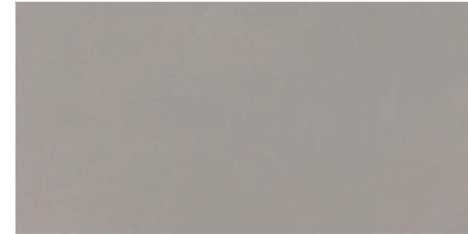


Wilsonart - Phantom  
Cocoa



Pomogranit Stones -  
Marfil River

### Flooring



Trinity Tile -  
Vision | Pearl

### Wallcoverings



Momentum - Marquise  
Silk | Frosted



Momentum - Marquise  
Silk | Moonstone

### Wall Tile



Crossville - Java Joint |  
Two Sugars



Crossville - Java Joint |  
House Blend



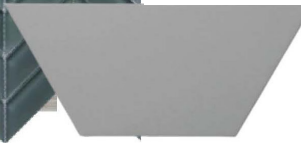
Emser - Edge | Morning Fog



Emser - Code | White



Emser - Edge | Gray



Emser - Code | Gray

Women's Scheme

Men's Scheme

# 712 Main Floor 1600

Finish Palette - Elevator Lobby and Corridor

Paint



Plam



Tile



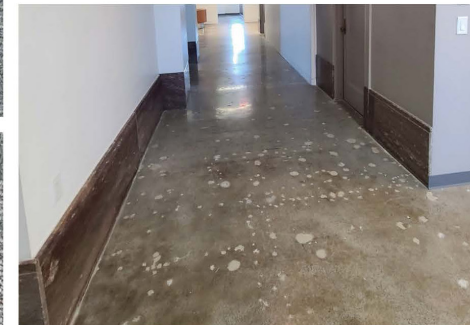
Sculpted Base  
Flexco - Captivate



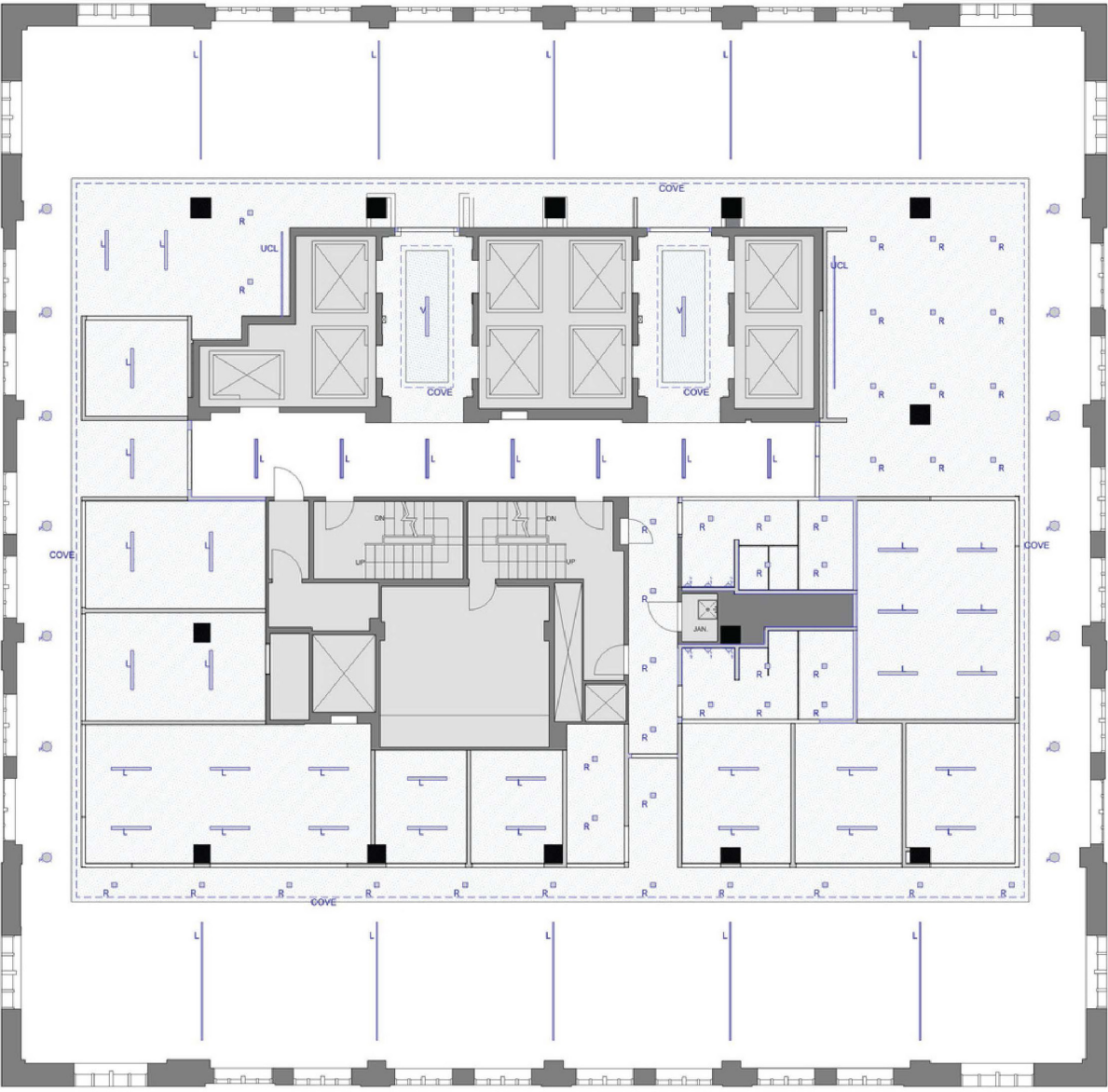
Carpet



Historic Base  
Existing



712 Main  
Floor 1600  
Proposed RCP



VINCE STRAKE  
713 405 7476  
vince.strake@partnersrealestate.com

LESLEY RICE  
713 275 9611  
lesley.rice@partnersrealestate.com



# 712 Main Floor 1600

Standard Light Fixtures/Applications



## Room Scene



Linear - Recessed



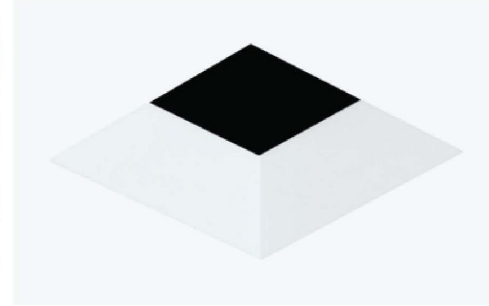
Linear - Suspended



Linear - Surface Mounted



Cove Lighting



Recessed Downlight



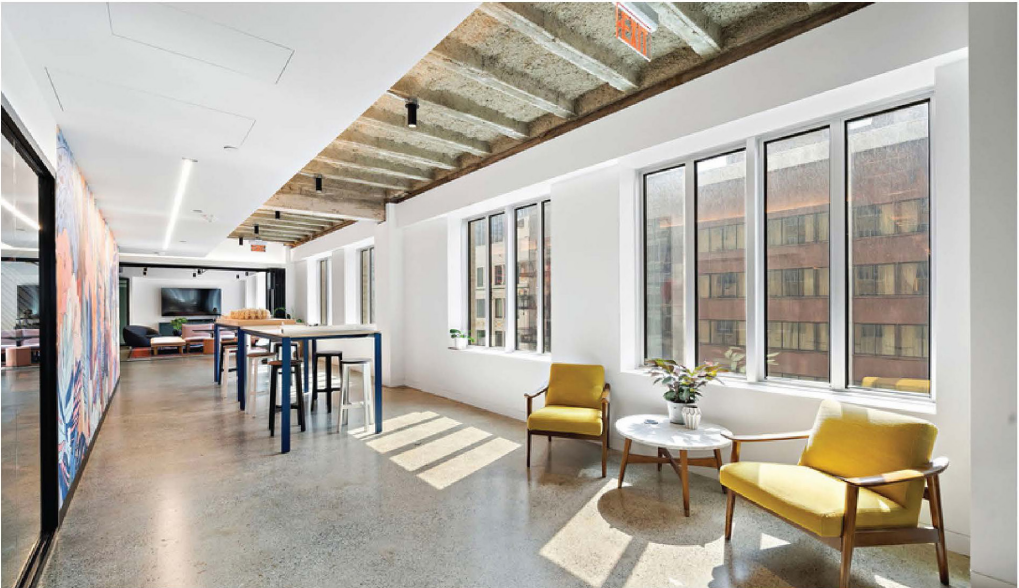
Pendant



Restroom Perimeter

# 712 Main Floor 1600

Reference Images Core Bldg Standards



VINCE STRAKE  
713 405 7476  
vince.strake@partnersrealestate.com

LESLEY RICE  
713 275 9611  
lesley.rice@partnersrealestate.com





VINCE STRAKE  
713 405 7476  
[vince.strake@partnersrealestate.com](mailto:vince.strake@partnersrealestate.com)

LESLEY RICE  
713 275 9611  
[lesley.rice@partnersrealestate.com](mailto:lesley.rice@partnersrealestate.com)

