

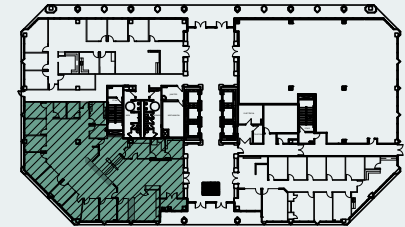


# ESPLANADE

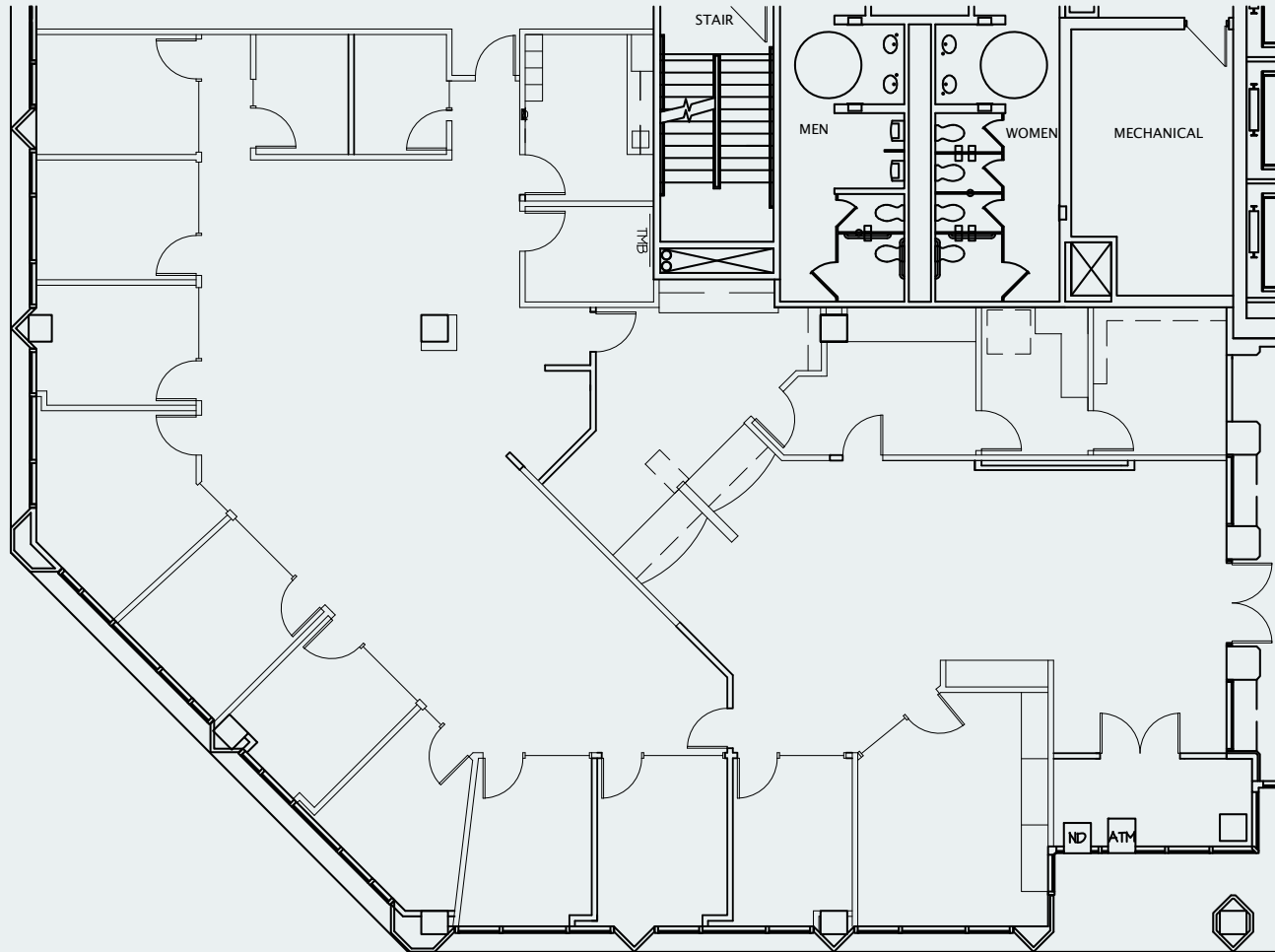
2555 EAST CAMELBACK ROAD

# Suite 160 | ±5,639 SF

## KEY MAP



- 1** Reception/Teller Area
- 1** ATM/Night Drop
- 11** Offices
- 3** Huddle Rooms
- 1** Conference Room
- 1** Break Room



Not to scale.  
All SF is approximate

**COREY HAWLEY**  
602.735.1742  
corey.hawley@cbre.com



**BRYAN TAUTE**  
602.373.7163  
bryan.taute@jll.com



**WILL MASK**  
563.506.2959  
will.mask@jll.com



© 2025 CBRE, Inc. All rights reserved. This information has been obtained from sources believed reliable, but has not been verified for accuracy or completeness. You should conduct a careful, independent investigation of the property and verify all information. Any reliance on this information is solely at your own risk. CBRE and the CBRE logo are service marks of CBRE, Inc. All other marks displayed on this document are the property of their respective owners, and the use of such logos does not imply any affiliation with or endorsement of CBRE. Photos herein are the property of their respective owners. Use of these images without the express written consent of the owner is prohibited.