

**\$0.65 PSF BLENDED!**  
**FLEXIBLE TERM AND SQUARE FOOTAGE AVAILABLE - CALL NOW!**

## Fife I-5 Commerce Center



# FOR SUBLEASE

*250,490 SF*

2801 78TH AVE E  
FIFE, WA

## Property Details

Available Size : 250,490 SF

Office : 12,000 SF

Available : Now

Master Lease Expiration : December 31, 2029

**NEWMARK**

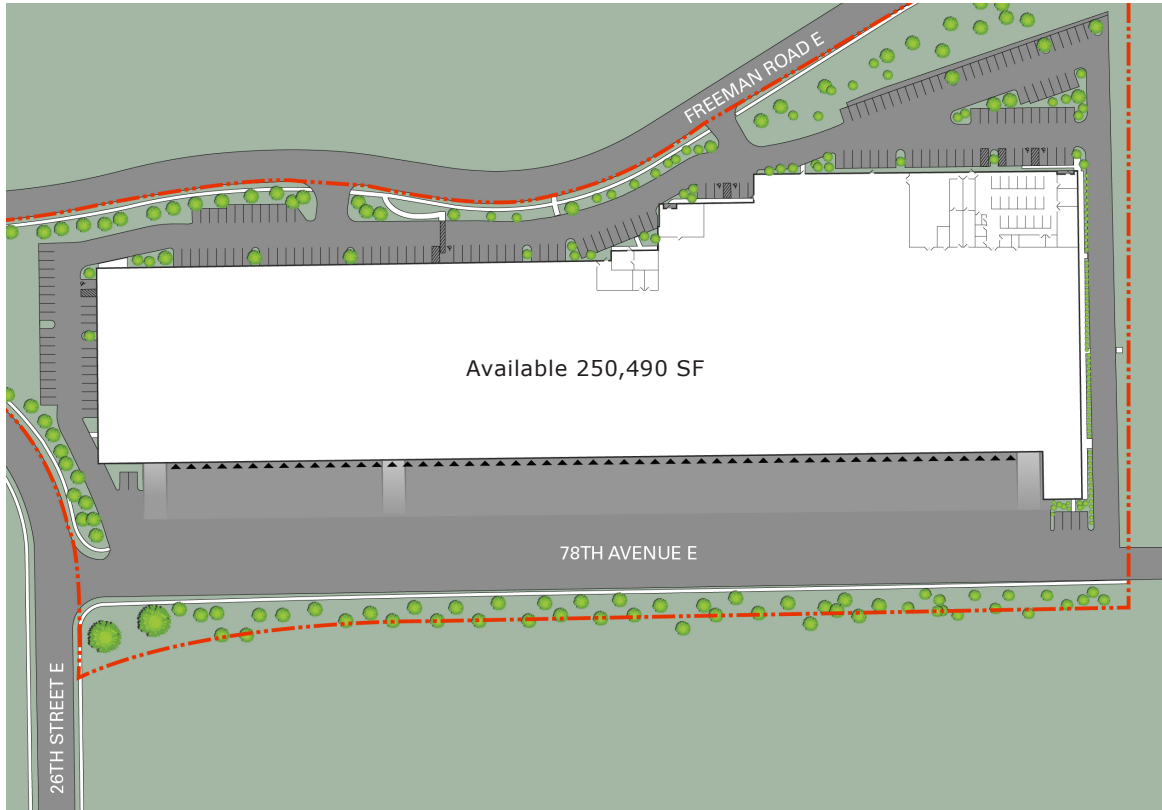
**Thad Mallory, SIOR**  
Executive Vice Chairman  
t 425-362-1410  
thad.mallory@nmrk.com

**Taylor Hoff, SIOR**  
Vice Chairman  
t 425-362-1388  
taylor.hoff@nmrk.com

**Morgan Richey, SIOR**  
Managing Director  
t 425-362-1409  
morgan.richey@nmrk.com

# FLOOR PLAN

2801 78TH AVE E, FIFE, WA



Clear Height : 32'

Loading : 63 dock high & 2 grade level

Sprinkler System : ESFR

Lighting : LED lighting 24' candles

All dock positions equipped with seals & bumpers

Slab : 6" 3,500 PSI

Equipment power drops through out

42 dock positions equipped with restraints

10 dock positions equipped with 30,000 lbs. levelers



East Fife  
Location

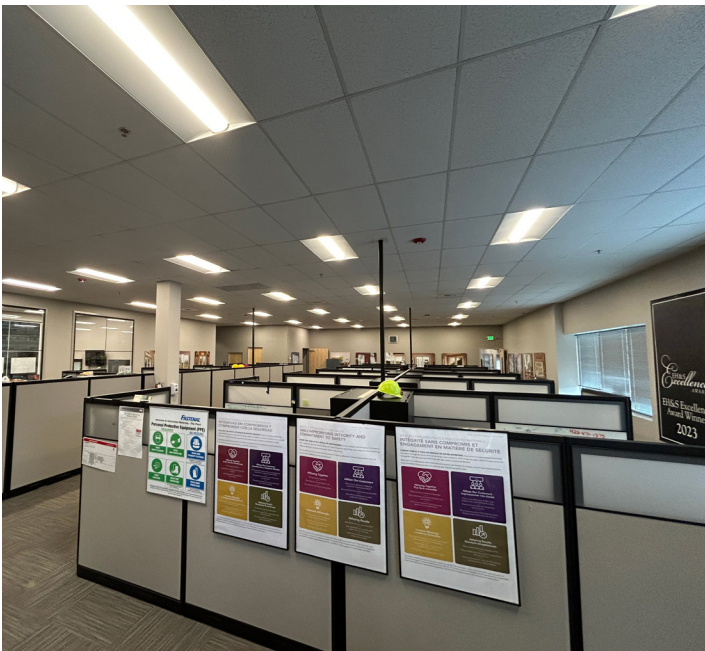


Access  
to I-5

**NEWMARK**

# PHOTOS

2801 78TH AVE E, FIFE, WA



**NEWMARK**

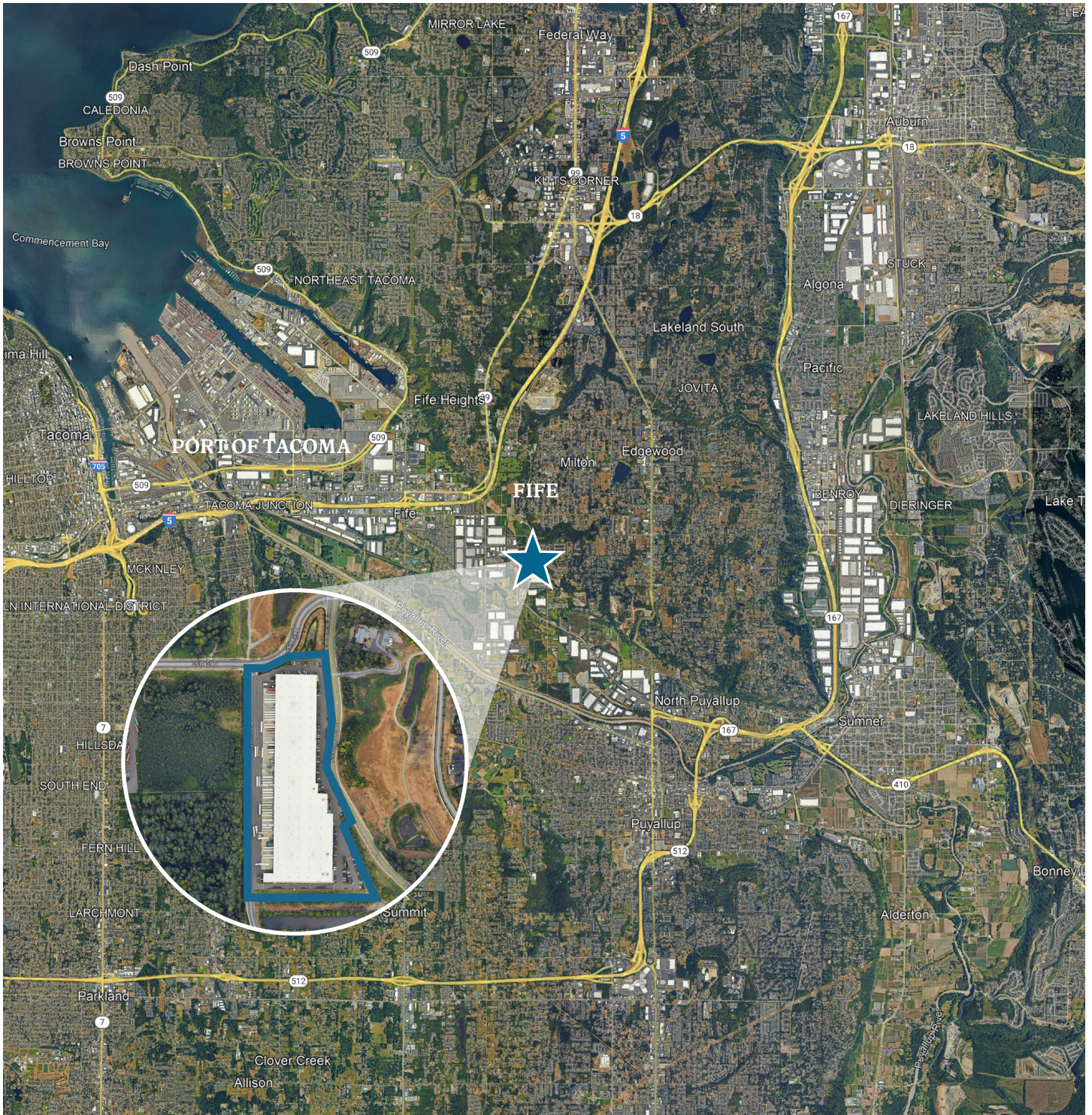
**Thad Mallory, SIOR**  
Executive Vice Chairman  
t 425-362-1410  
thad.mallory@nmrk.com

**Taylor Hoff, SIOR**  
Vice Chairman  
t 425-362-1388  
taylor.hoff@nmrk.com

**Morgan Richey, SIOR**  
Managing Director  
t 425-362-1409  
morgan.richey@nmrk.com

# AERIAL

2801 78TH AVE E, FIFE, WA



**NEWMARK**

The distributor of this communication is performing acts for which a real estate license is required. The information contained herein has been obtained from sources deemed reliable but has not been verified and no guarantee, warranty or representation, either express or implied, is made with respect to such information. Terms of sale or lease and availability are subject to change or withdrawal without notice. 18-1023