



# Sublease Available

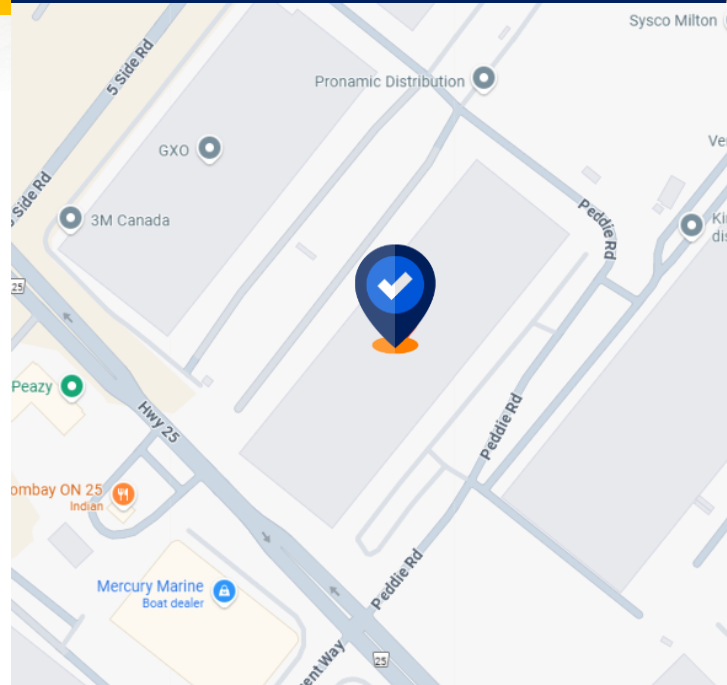
**2995 Peddie Road  
Milton, ON**

## Space Profile

<b>Premises</b>	Entire Building
<b>Total Rentable Area</b>	303,187 SF Divisible from 100,000 SF
<b>Net Rent</b>	Contact Listing Agents
<b>TMI:</b>	TBD
<b>Availability</b>	September 1 <sup>st</sup> , 2025
<b>Term</b>	November 30 <sup>th</sup> , 2032

## Features

- 32' clear height
- 64 dock-level doors
- 2 drive-in doors
- Trailer spaces: 75 Stalls
- Car parking: 206 Stalls
- Typical bay: 54'-0" x 34'-10"
- Main Office: 7,978 SF
- In close proximity to Highway 401 and Hwy 25



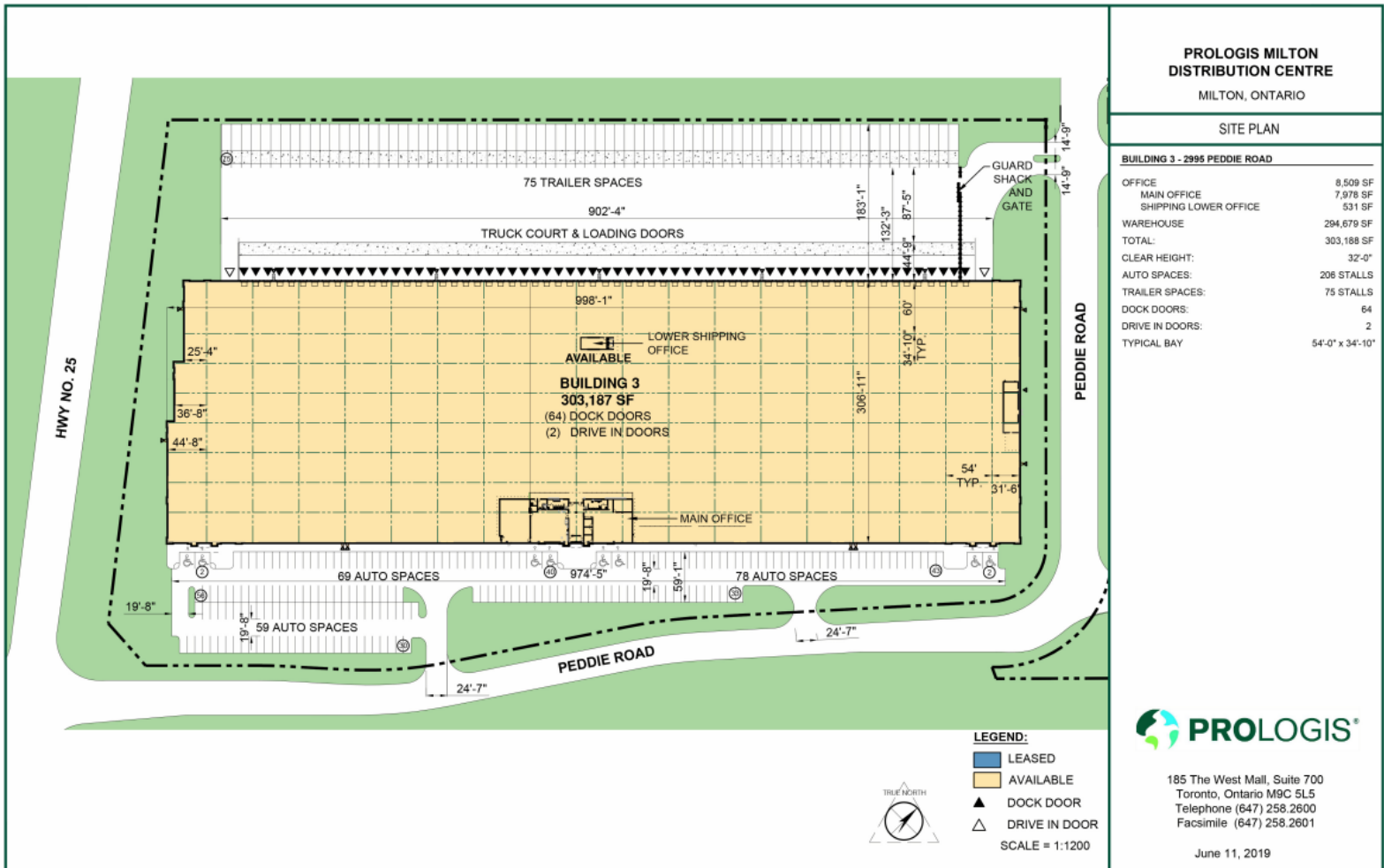
**Steven Rector**  
Principal,  
Sales Representative  
416.862.8142  
srector@cresa.com



**Matthew Rosenberg**  
Principal,  
Sales Representative  
416.847.6220  
mrosenberg@cresa.com

Even though obtained from sources deemed reliable, no warranty or representation, express or implied, is made as to the accuracy of the information herein, and it is subject to errors, omissions, change of price, rental or other conditions, withdrawal without notice, and to any special listing conditions imposed by our principals.

# Entire Building 303,187 SF

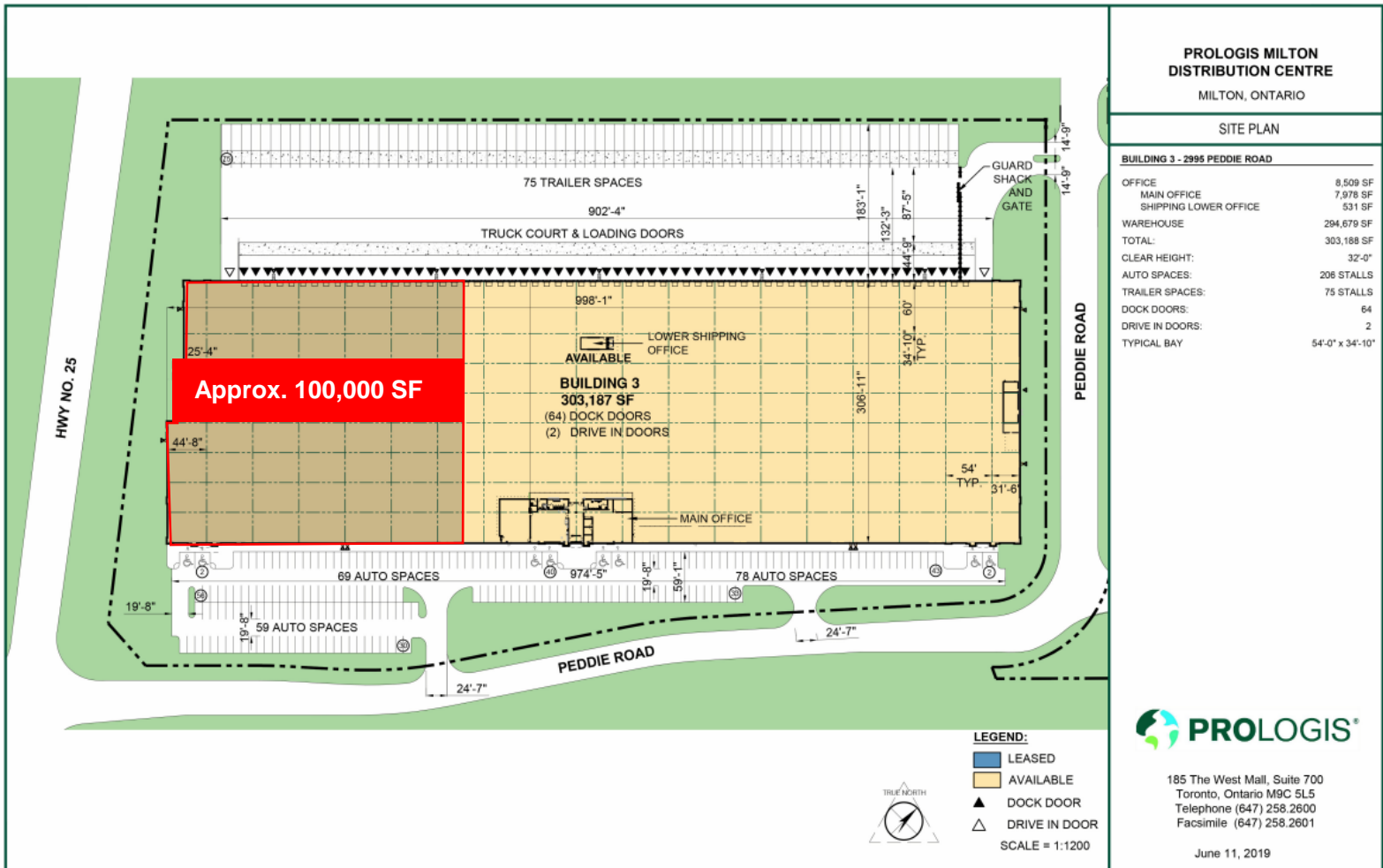


**Steven Rector**  
Principal,  
Sales Representative  
416.862.8142  
srector@cresa.com



**Matthew Rosenberg**  
Principal,  
Sales Representative  
416.847.6220  
mrosenberg@cresa.com

# Divisible from 100,000 SF – 303,187 SF



**Steven Rector**  
Principal,  
Sales Representative  
416.862.8142  
srector@cresa.com



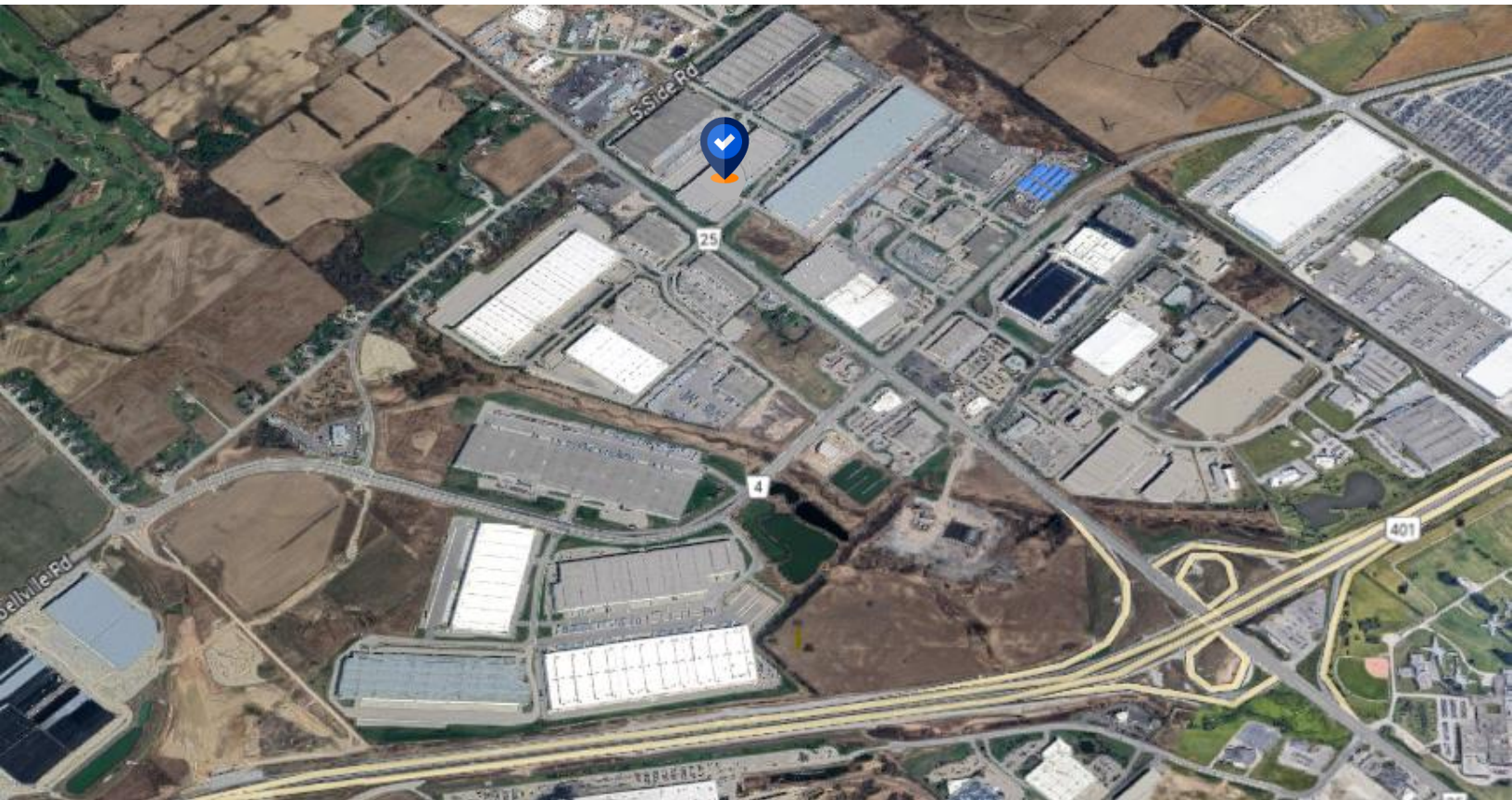
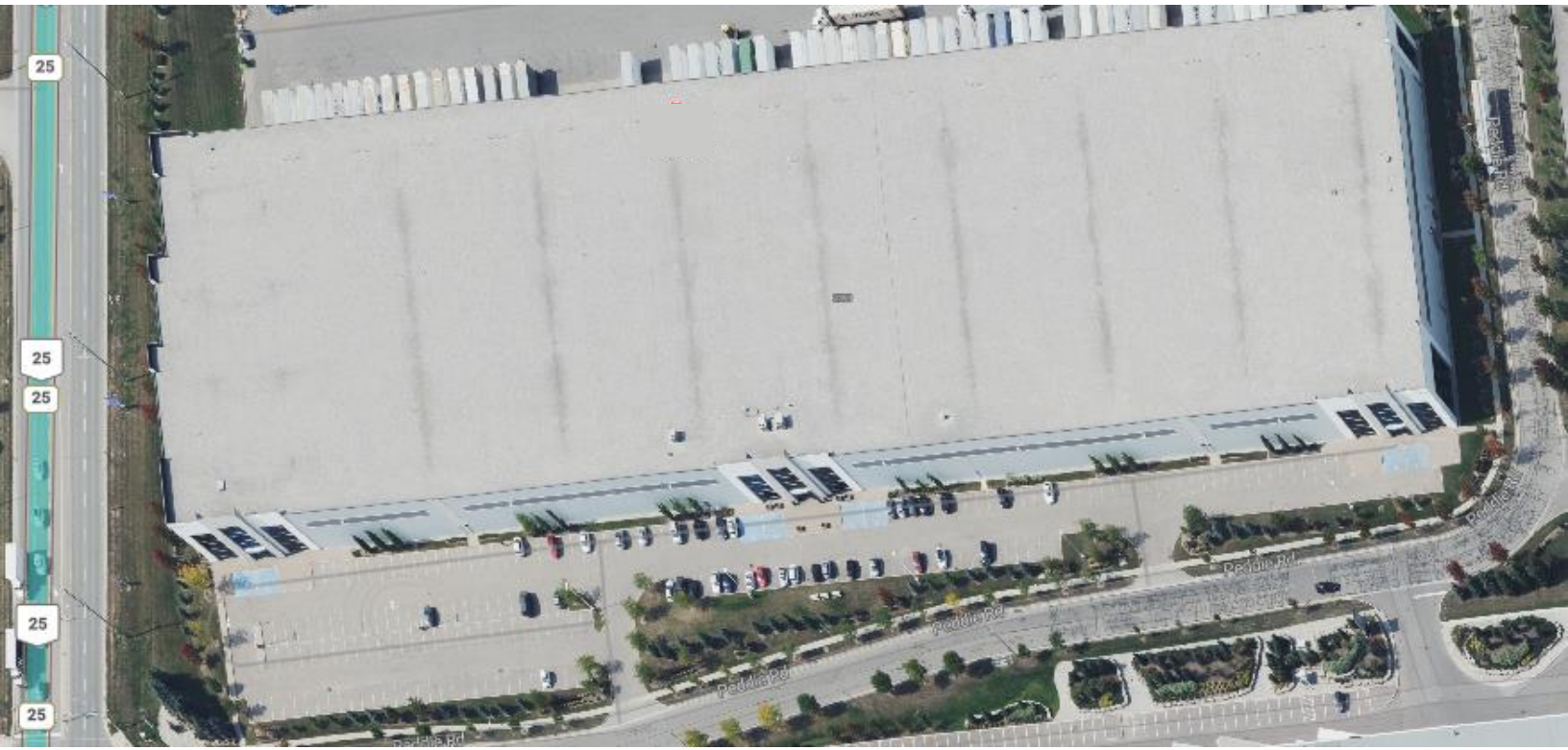
**Matthew Rosenberg**  
Principal,  
Sales Representative  
416.847.6220  
mrosenberg@cresa.com



**Steven Rector**  
Principal,  
Sales Representative  
416.862.8142  
srector@cresa.com



**Matthew Rosenberg**  
Principal,  
Sales Representative  
416.847.6220  
mrosenberg@cresa.com

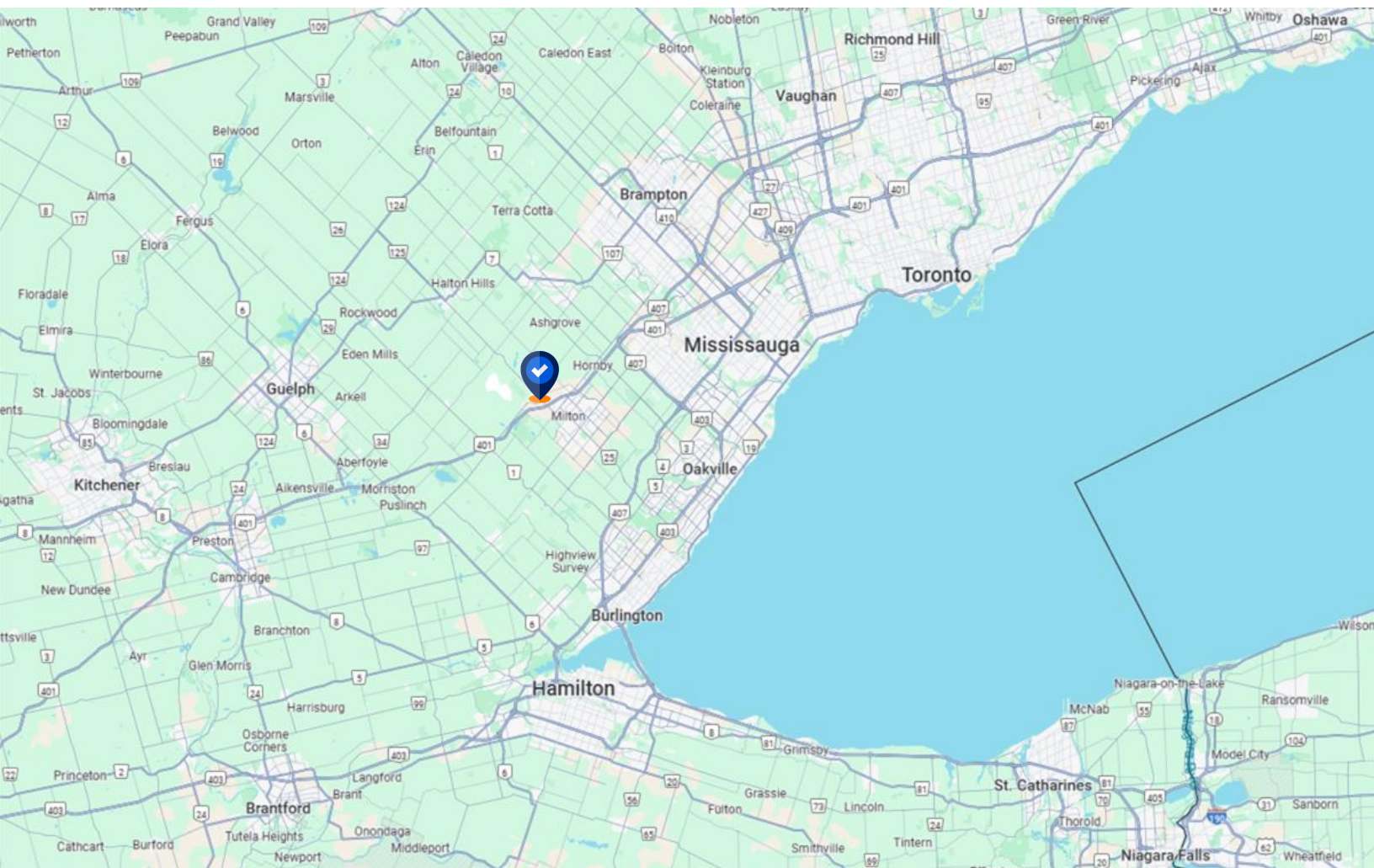
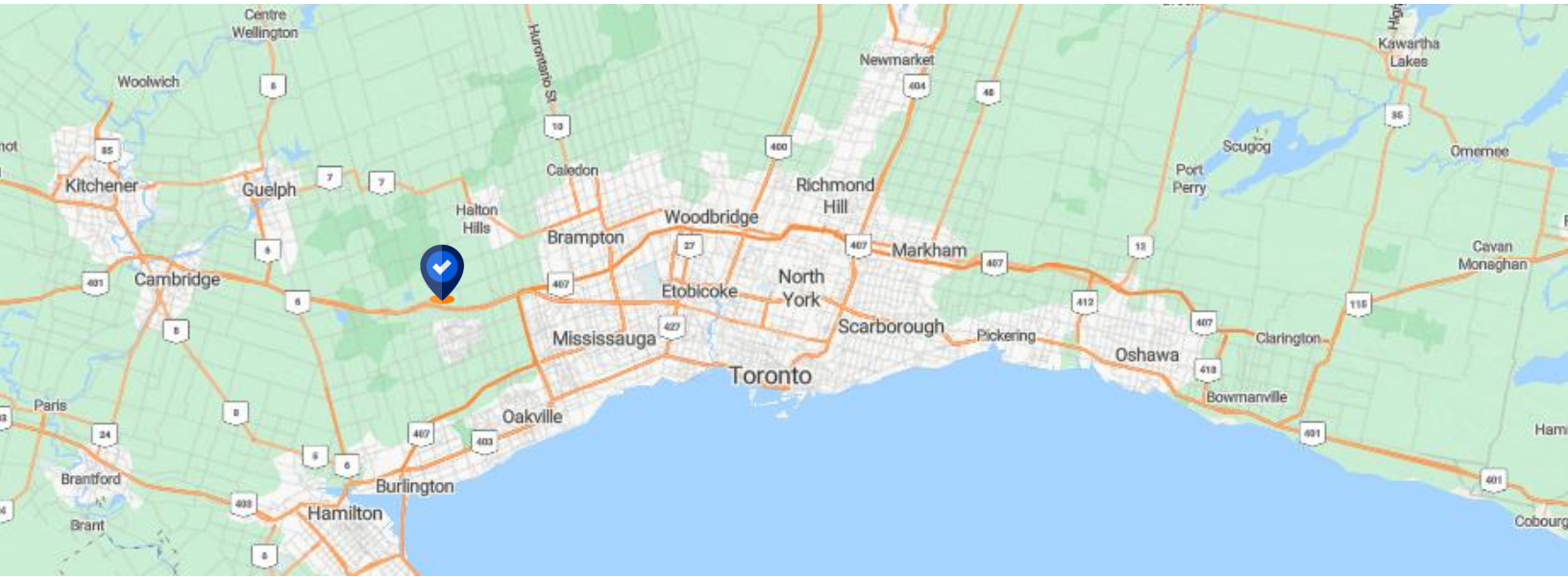


**Steven Rector**  
Principal,  
Sales Representative  
416.862.8142  
srector@cresa.com



**Matthew Rosenberg**  
Principal,  
Sales Representative  
416.847.6220  
mrosenberg@cresa.com

# 2995 Peddie Road, Milton, ON



**Steven Rector**  
Principal,  
Sales Representative  
416.862.8142  
srector@cresa.com



**Matthew Rosenberg**  
Principal,  
Sales Representative  
416.847.6220  
mrosenberg@cresa.com