



CLT
LOGISTICS
CENTER



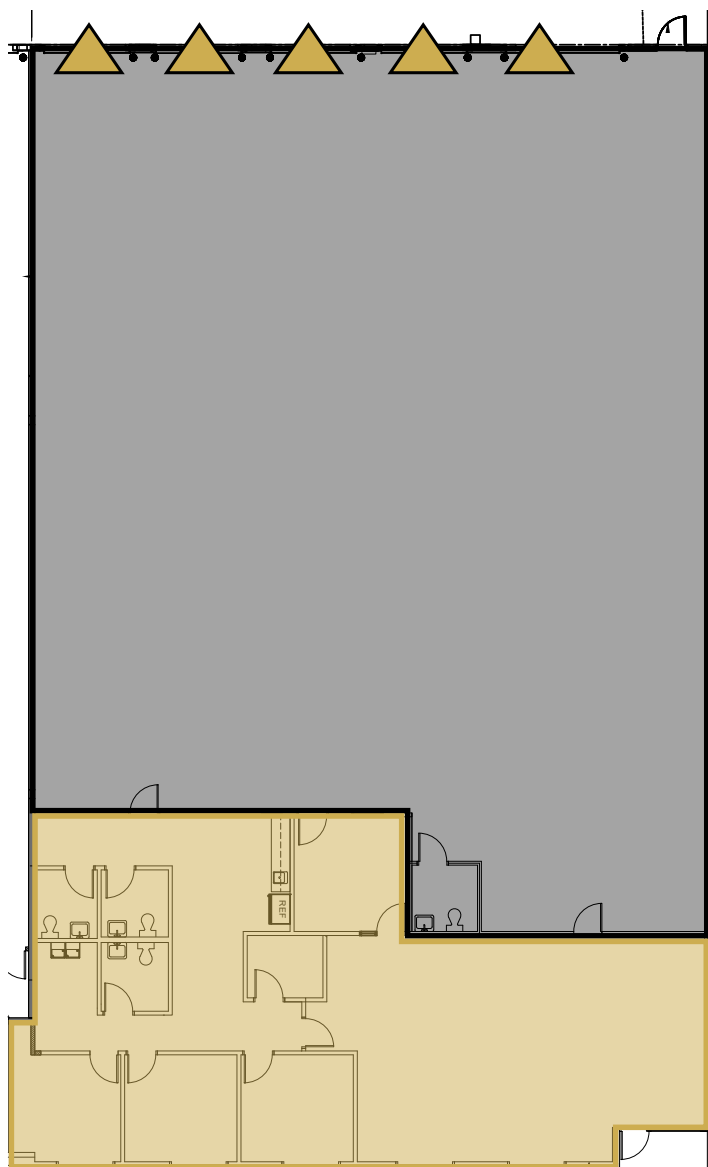
3101 YORKMONT RD
SUITE 250

CHARLOTTE, NORTH CAROLINA

THE
MERITEX[®]
COMPANY
ESTD 1916

8,711 SF AVAILABLE FOR LEASE

3101 YORKMONT RD
SUITE 250



▲ DOCK HIGH DOOR

6,269 SF WAREHOUSE
2,442 SF OFFICE

8,711 SF Total

SPACE FEATURES

8,711 SF Total Available

- 18' Clear
- Wet Sprinkler
- 4 (9' x 10') Dock High Doors
- 1 (12' x 14') Dock High Door
- 5 Levelers
- I-2 Zoning
- 400 Amp Power Service



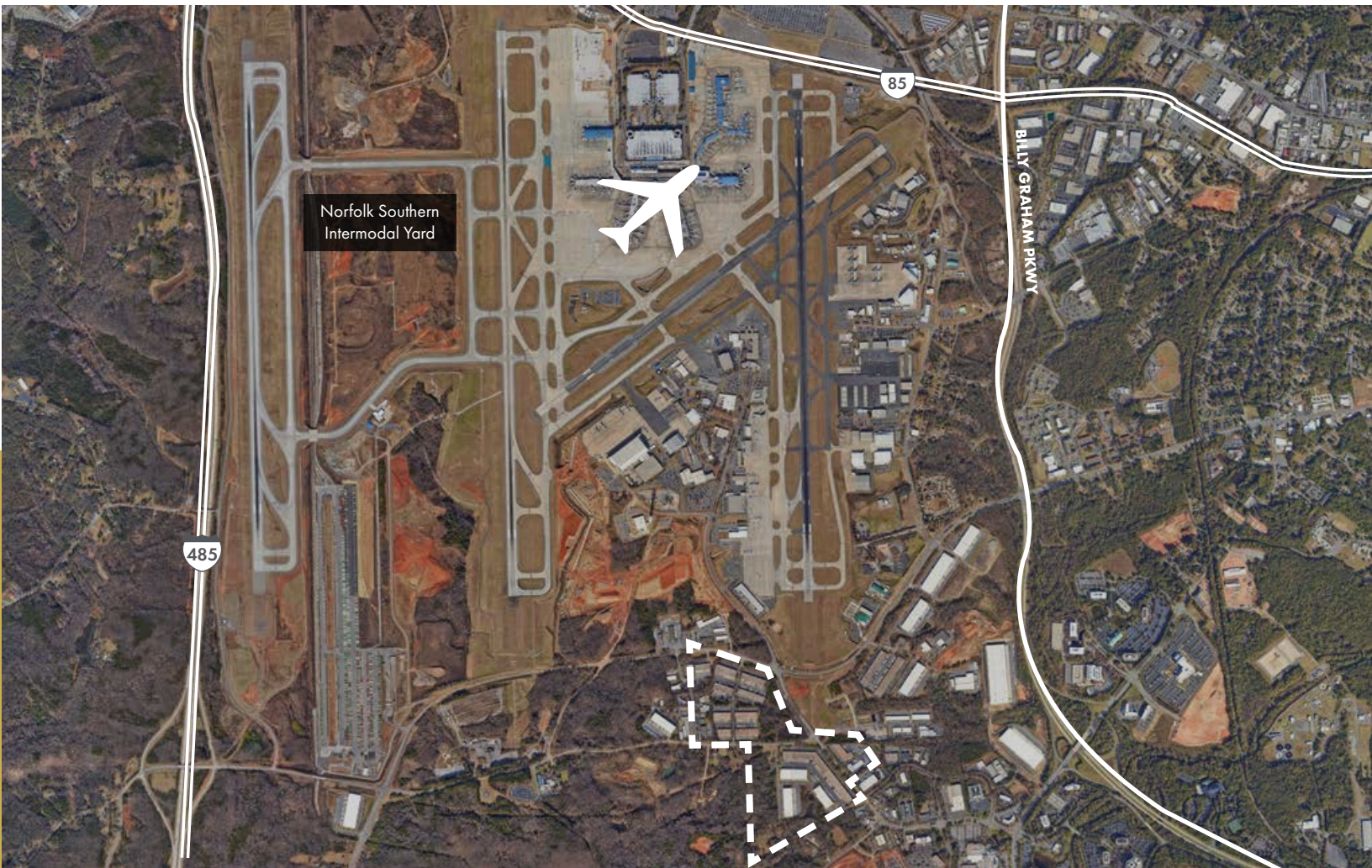
CLT LOGISTICS CENTER

CLT LOGISTICS IS A 797,342 SQUARE FOOT LIGHT INDUSTRIAL PARK WITH 14 CLASS A BUILDINGS. IT IS LOCATED JUST SOUTH OF CHARLOTTE DOUGLAS INTERNATIONAL AIRPORT WITH EASY ACCESS TO I-77, I-85 AND I-485. THE BUILDINGS FEATURE SUPPRESSION SYSTEMS, DOCK HIGH LOADING, DRIVE-IN DOORS, AND GENEROUS PARKING.

THE
MERITEX[®]
COMPANY
ESTD 1916

OWNERSHIP - THE MERITEX COMPANY

Meritex is a 107-year-old, family-owned company with a focus on light industrial properties, committed to providing exceptional spaces and service, allowing businesses to focus on their work at hand. Meritex strategically expands within key markets, ensuring that their properties and growth rate are in sync with their tenants' needs and ambitions. And once you're in a Meritex building, you can be assured that an expert local team is on hand when you need them.





SUITE NO.	TENANT	SF
3401	INTERNATIONAL AIRPORT DRIVE	43,345
3400	INTERNATIONAL AIRPORT DRIVE	42,088
3301	INTERNATIONAL AIRPORT DRIVE	40,920
3300	INTERNATIONAL AIRPORT DRIVE	46,977
3201	INTERNATIONAL AIRPORT DRIVE	31,725
3200	INTERNATIONAL AIRPORT DRIVE	41,146
3101	INTERNATIONAL AIRPORT DRIVE	28,138
3100	INTERNATIONAL AIRPORT DRIVE	50,356
3140	YORKMONT RD	43,341
3100	YORKMONT RD	22,111
3101	YORKMONT RD	192,874

FOR MORE INFORMATION, PLEASE CONTACT:

CASEY MULHERN

Senior Vice President
704.705.1182

casey.mulhern@foundrycommercial.com

BRIAN CRAVER, CCIM

Senior Vice President
704.319.5072

brian.craver@foundrycommercial.com