
28 West 20th Street

Located in the Flatiron District between 5th and 6th Avenue

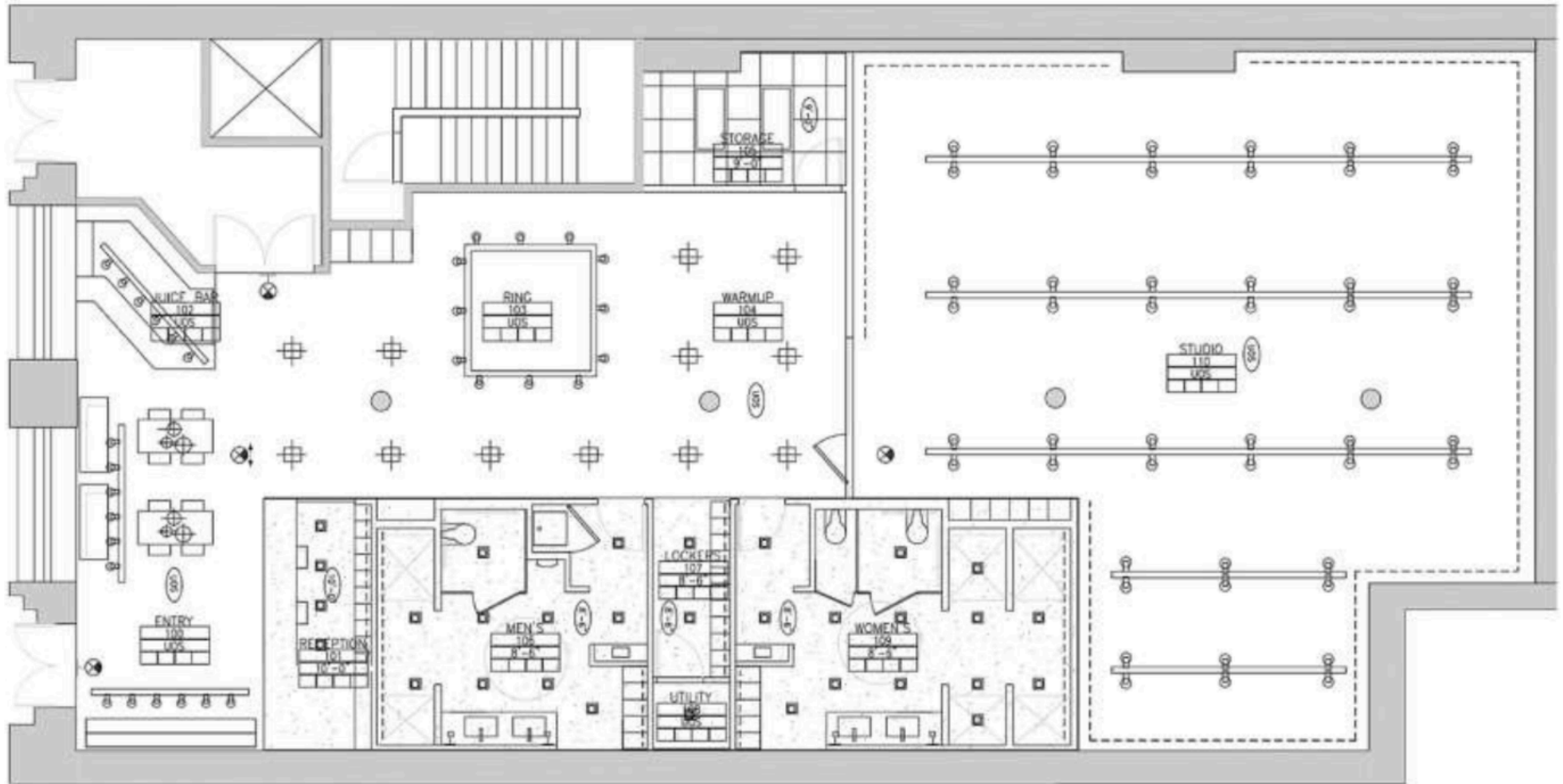


28 West 20th Street

HIGHLIGHTS

- 4,000 SF on ground level with 14.5' ceiling heights + additional 4,000 SF on lower level with 10' ceiling heights - totaling 8,000 SF
- Open to all uses, gas and venting in place
- Turnkey boxing gym opportunity (former Shadowbox) featuring fully built men's & women's locker rooms with showers
- 36' of frontage in prime Flatiron location
- 14' ceilings with expansive, light-filled space
- Floor-to-ceiling glass providing maximum exposure
- Exceptional foot traffic in a high-demand corridor
- Steps from multiple subway lines - F, M, L, N, Q, R, W, 4, 5, and 6
- Highly visible storefront presence
- An additional 3,200 SF is available on 19th Street and can be combined to create a contiguous, walk-through space





28 West 20th Street



28 West 20th Street



28 West 20th Street



B
/ H
R E A L T Y

FOR MORE INFORMATION PLEASE CONTACT:



Max Maleh

✉ MAX@BHR.NYC

📱 917.952.3670

WWW.BHR.NYC