

SUBLEASE AT

ONE

GRAND CENTRAL PLACE

60 EAST 42ND STREET



**AVISON
YOUNG**

PARTIAL 14TH FLOOR | 15,675 RSF



SUBLEASE AT

ONE

**GRAND
CENTRAL
PLACE**

60 EAST 42ND STREET



Partial 14th Floor

Location

60 East 42nd Street, between Park and Madison Avenues at the base of Vanderbilt Avenue

Premises

Partial 14th floor - 15,675 RSF, Suite 1440

Possession

12/1/2025

Term

Through December 30, 2029

Rate

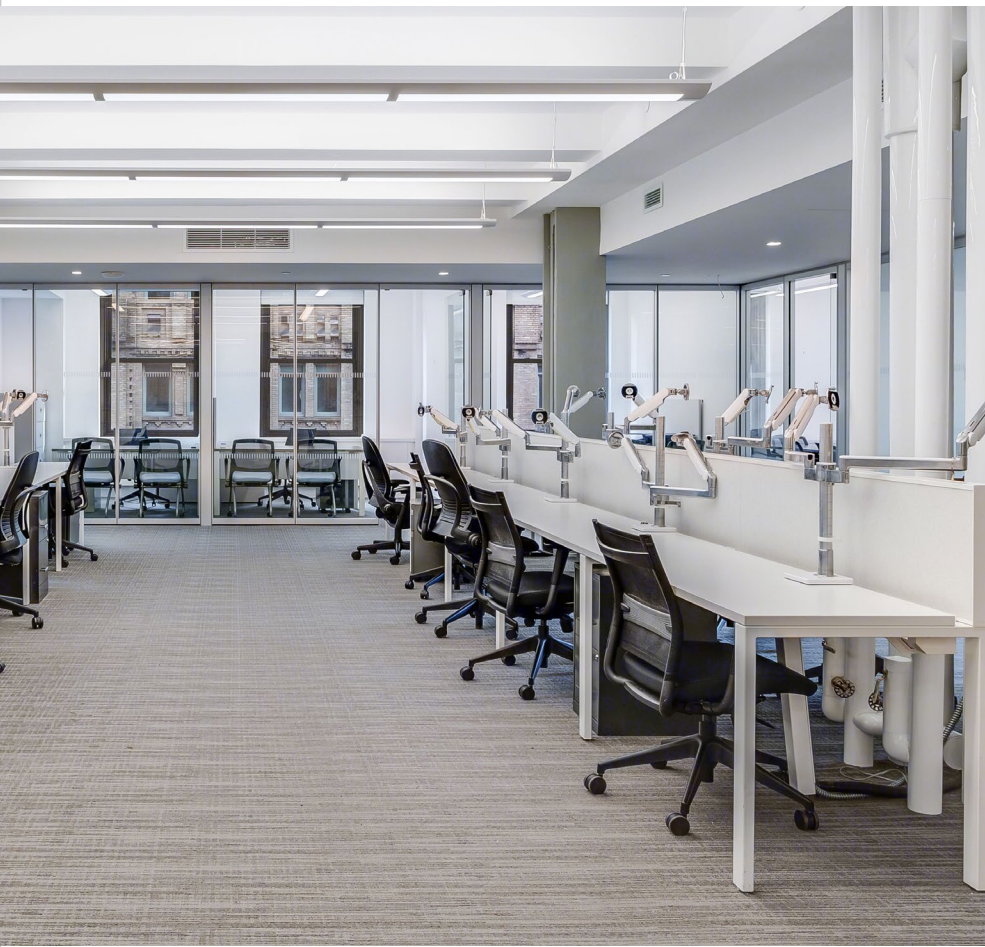
Available upon request

Space Description

- Move-in ready space in prime Grand Central location
- Fully furnished and wired
- Brand new installation
- Polished concrete floors
- Open finished ceilings

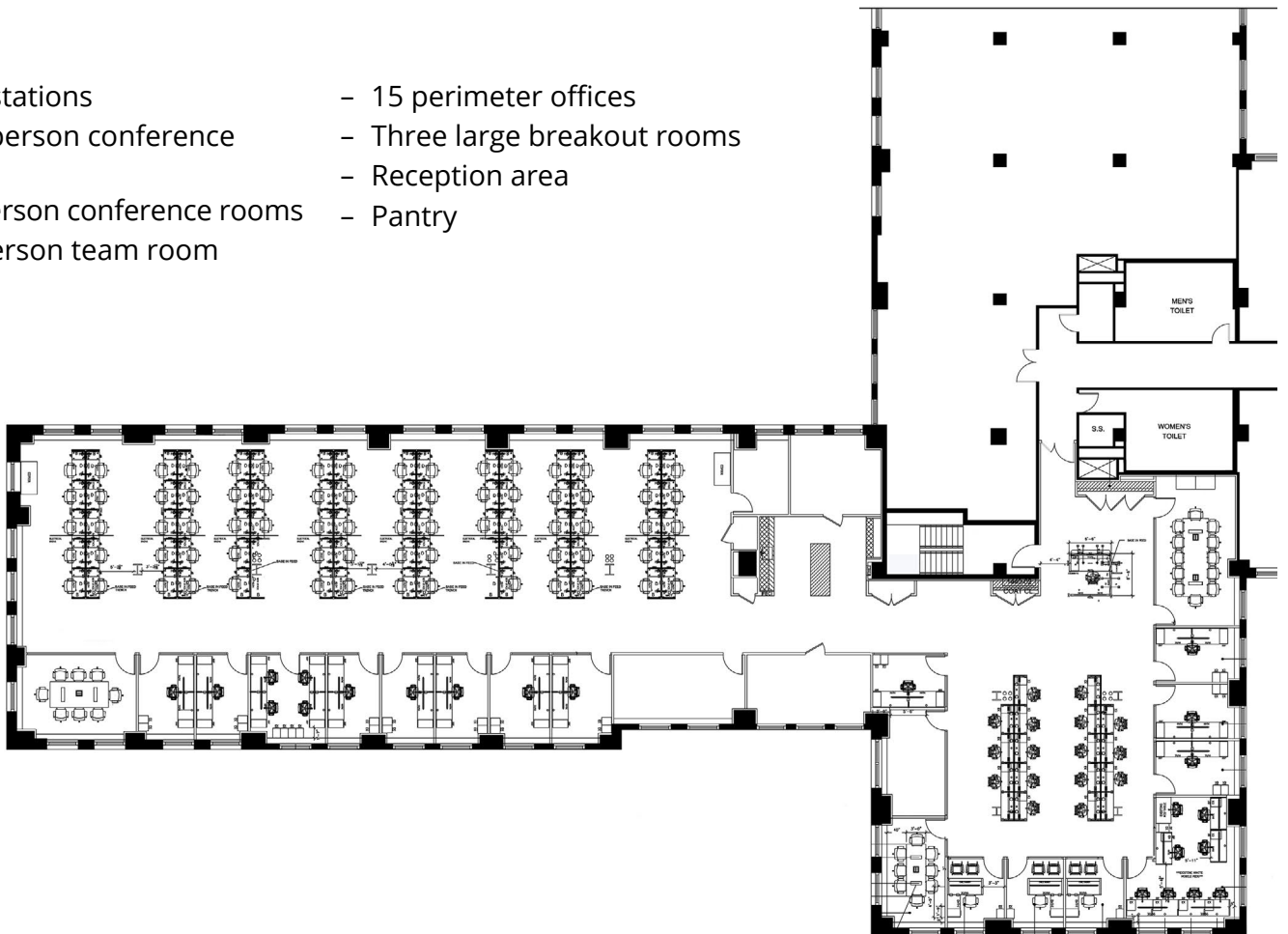
Building Description

- Located across from Grand Central Terminal on 42nd Street
- Recently completed upgrades to windows, elevators, plumbing, HVAC, security and restoration to lobby
- In-building amenities include a visitor center and tenants-only conference center and convenience store
- Several dining options such as 6b, Pera Mediterranean Brasserie and Blue Bottle Coffee as well as banking/investment companies such as JPMorgan Chase Bank, Charles Schwab and First Republic Bank



Layout

- 94 workstations
- One 12-person conference room
- Two 8-person conference rooms
- One 7-person team room
- 15 perimeter offices
- Three large breakout rooms
- Reception area
- Pantry



SUBLEASE AT **ONE** GRAND CENTRAL PLACE
60 EAST 42ND STREET



Nearby Transportation

Direct access to Grand Central Terminal which gives access to the **4 5 6 7 S** MTA Metro-North Railroad MTA Long Island Railroad

For more information, please contact exclusive sublease brokers:

MARTIN COTTINGHAM

212.729.6325
martin.cottingham@avisonyoung.com

JOEL WECHSLER

917.604.5166
joel.wechsler@avisonyoung.com

PATRICK STEFFENS

212.729.7945
patrick.steffens@avisonyoung.com

ALEXIS ODGERS

917.877.6027
alexis.odgers@avisonyoung.com

