



WEST CREEK MEDICAL PARK

1300-1600 WILKES RIDGE DRIVE, HENRICO, VA 23233

NOW LEASING!



NEW MEDICAL OFFICE BUILDING NEAR SHORT PUMP INTERSECTION OF I-288 & W. BROAD ST

FEATURES

- ▶ TWO, two (2) story, 40,000 SF brick medical office buildings located in Short Pump at intersection of I-288 & W. Broad St
- ▶ Tenant improvement allowance, flexible lease terms
- ▶ Excellent access to I-288 (1.5 miles) and I-64 (2.0 miles)
- ▶ Monument signage available
- ▶ One of Richmond's hottest development areas
- ▶ Growing population of 50,000+ in the immediate area, expected to increase with more residential and commercial developments in the pipeline

DETAILS

| | |
|------------------------|---|
| Space Available | Building 1600 ± 1,300 SF – 7,200 SF |
| | Building 1300 ± 3,000 SF – 13,000 SF |

Nearby:



MEDARVA Healthcare, Drive Shack, Residence Inn by Marriott, Wawa, Audi Richmond, Cabela's, Wegman's, ALDI, Bon Secours Emergency Center, CareNow Urgent Care, Truist Bank, Short Pump Town Center, REI, Whole Foods, American Family Fitness, Commonwealth Primary Care, VCU Health, West End Facial Plastic Surgery, VA Physicians for Women, Goddard School, Virginia Eye Institute

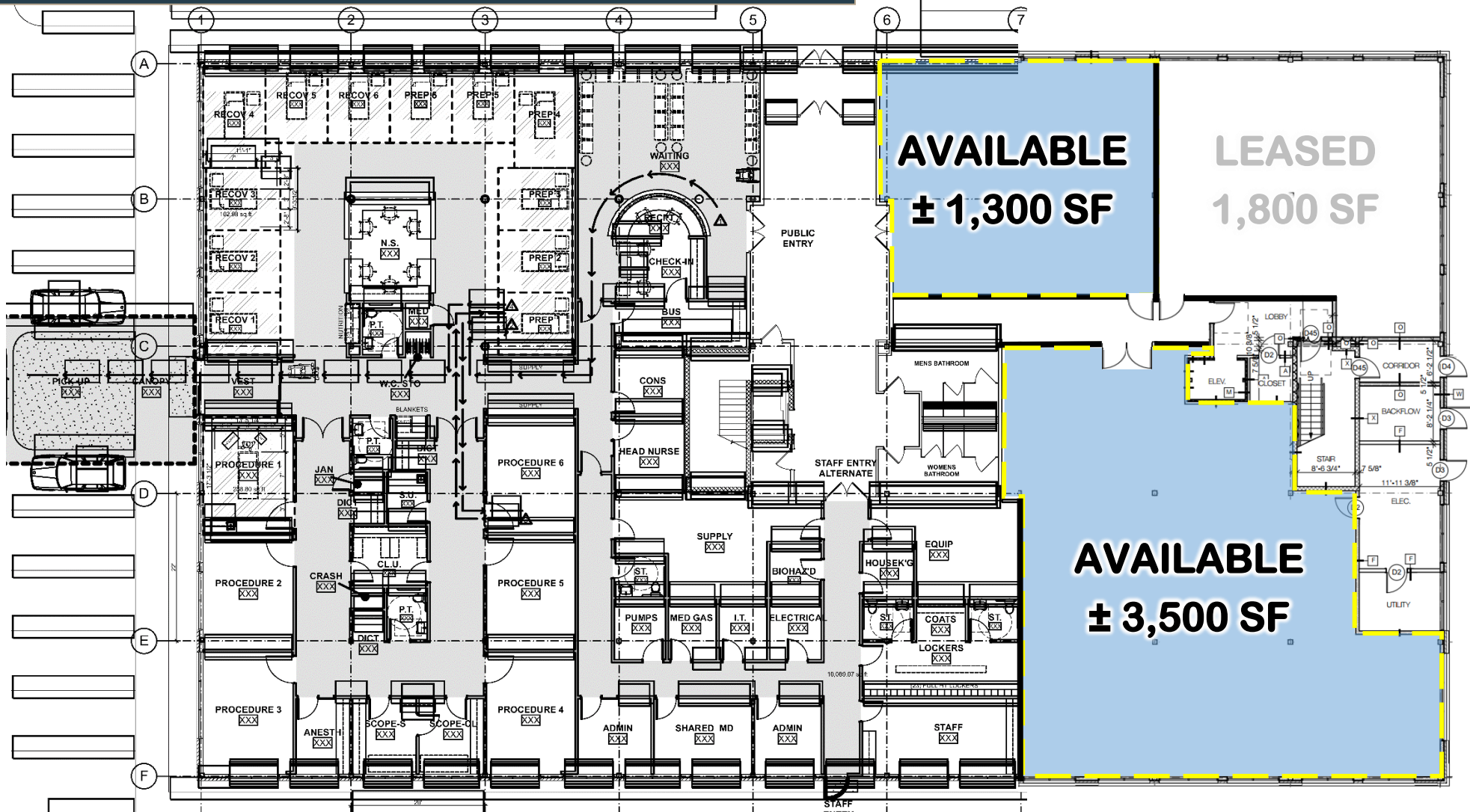


CONTACT

Sean Eichert, (804) 419-2295
seichert@realestateservicesco.com, realestateservicesco.com

Real Estate Services, Co.
13281 River's Bend Blvd, Suite 201, Chester, VA 23836

BUILDING 1600 – FIRST FLOOR



**AVAILABLE
± 1,300 SF**

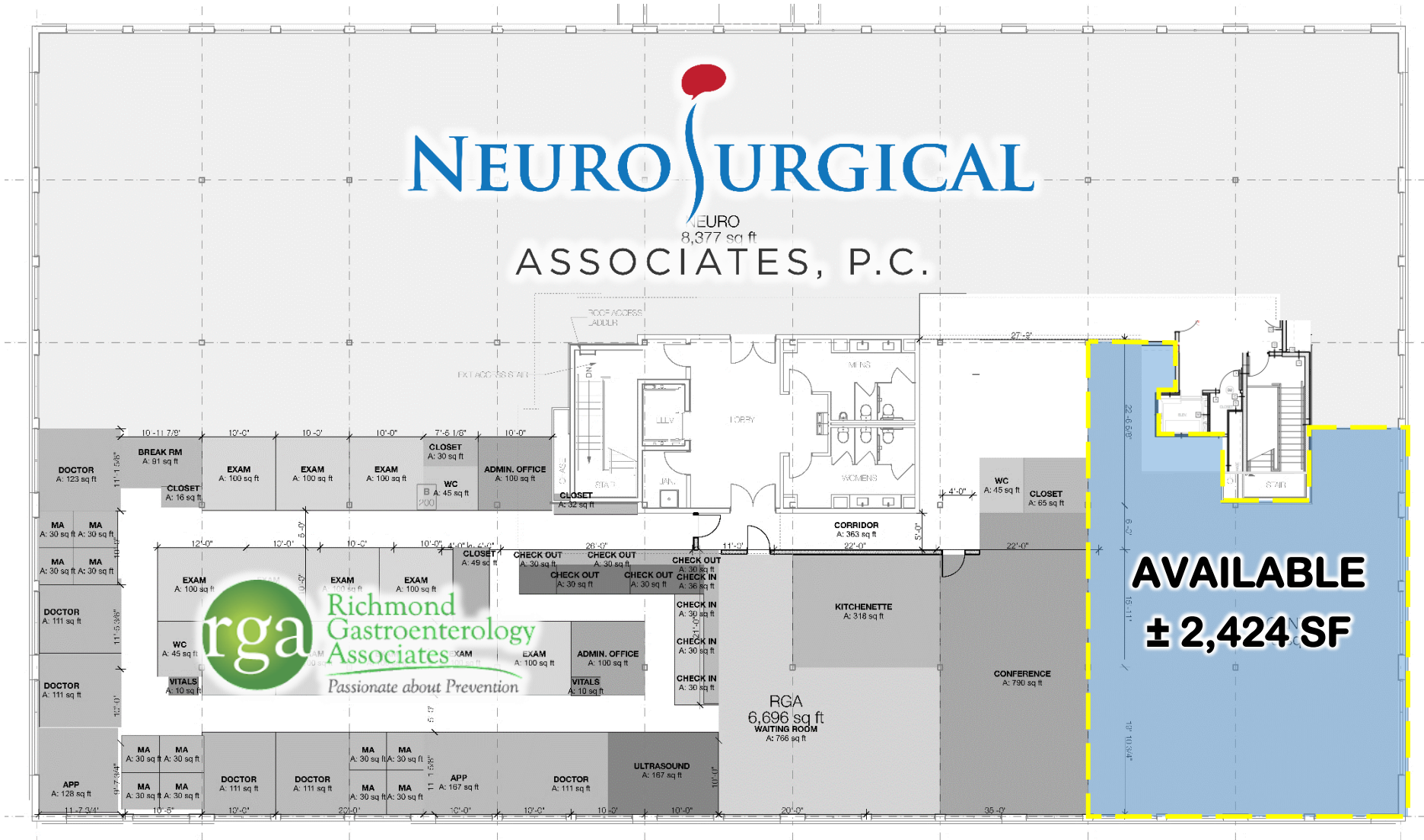
**LEASED
1,800 SF**

**AVAILABLE
± 3,500 SF**

BUILDING 1600 – SECOND FLOOR

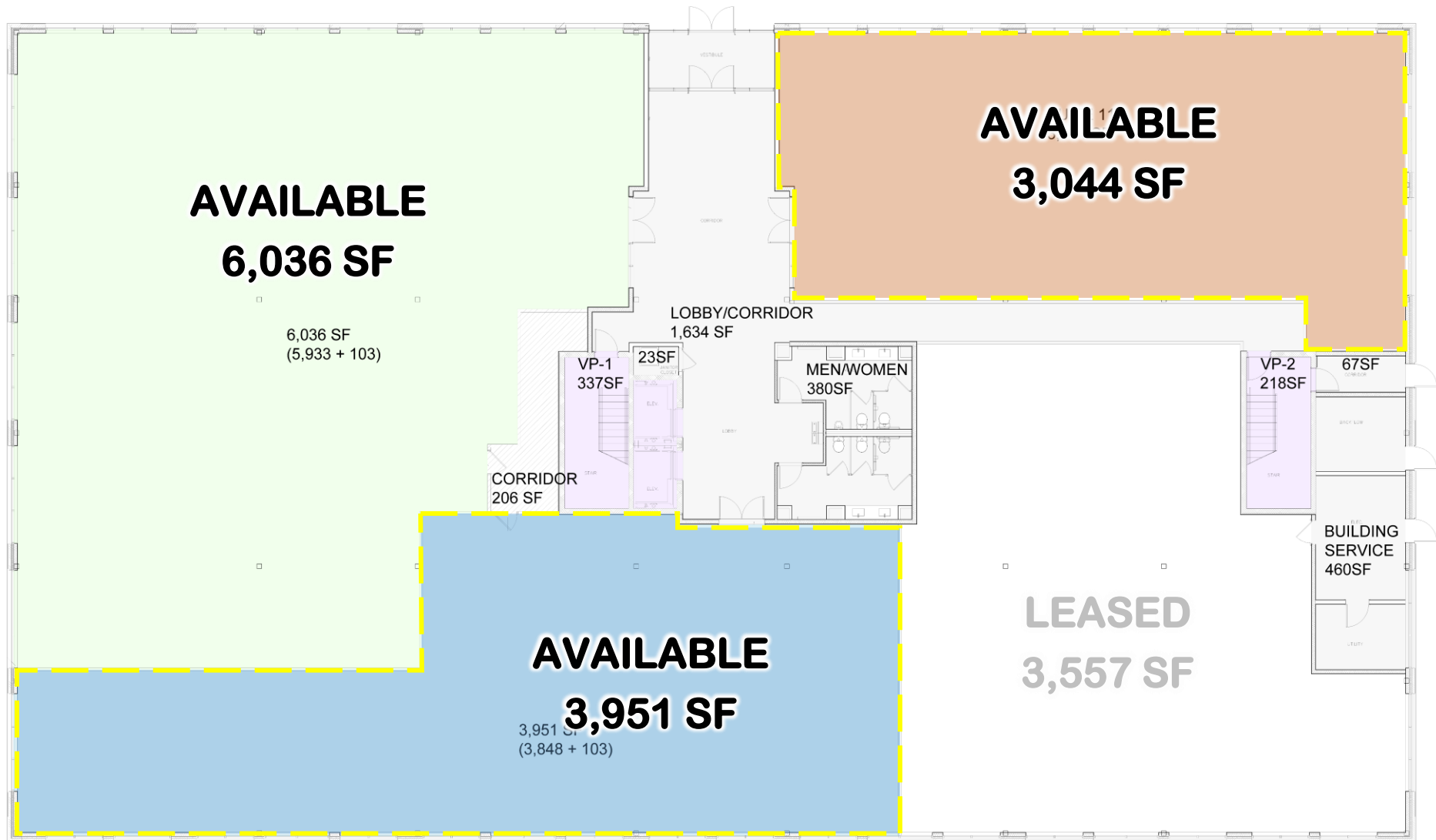
NEURO SURGICAL

NEURO
8,377 sq ft
ASSOCIATES, P.C.



**AVAILABLE
± 2,424 SF**

BUILDING 1300 – FIRST FLOOR



AERIAL

