

EASTVIEW PROFESSIONAL BUILDING

CLINIC, LAB & OFFICE
SUBLEASE

1370 116TH AVENUE NE
BELLEVUE, WA 98104

AVAILABLE
IMMEDIATELY

3,566 SF

Flexible Footprint Options Available
1,138 - 3,566 SF

FLINN
FERGUSON
cresa



Highlights



Quality medical office space adjacent to Overlake Hospital Campus



Adjacent to new Sound Transit Link Light Rail Overlake Station



Built-out medical office/professional office space



Recently updated Eastview I common areas



Ample Covered Parking



Convenient access to I-405 & Downtown Bellevue CBD



Specialty Procedure Room



Clinical Laboratory Infrastructure

Proximity to Referral Sources

OVERLAKE MEDICAL CENTER & CLINICS

Retina CONSULTANTS
of Seattle

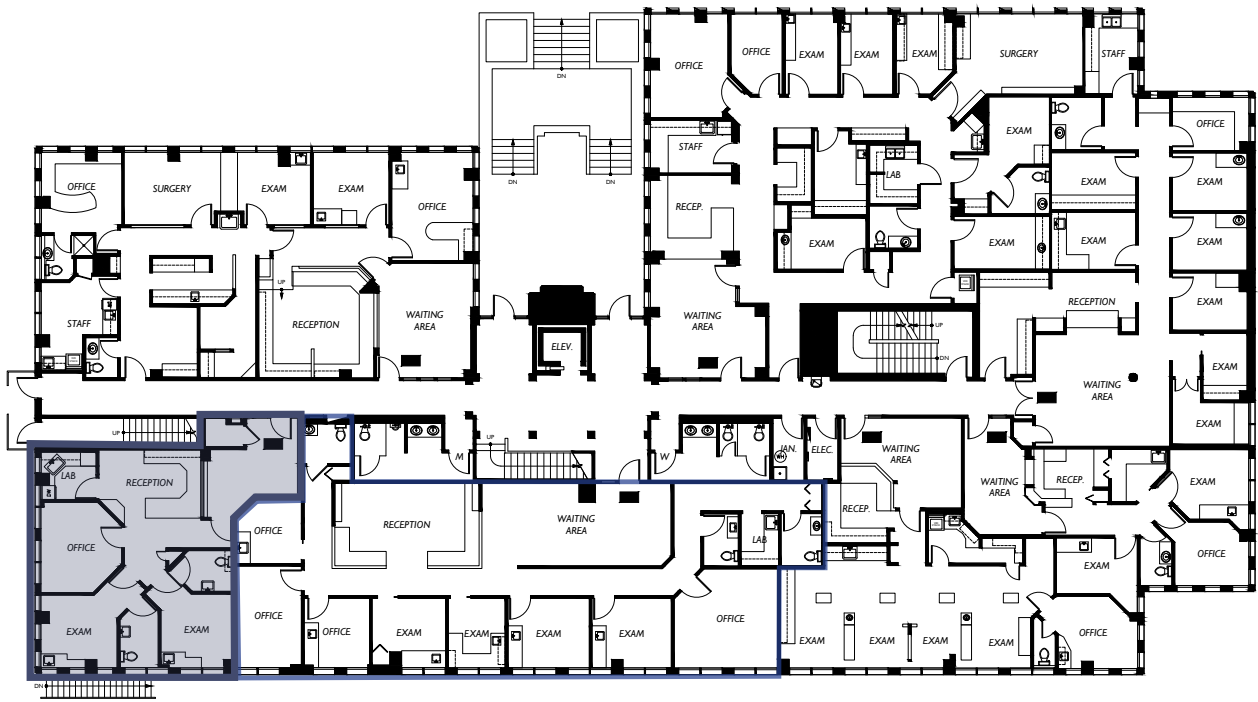
Seattle Children's
HOSPITAL · RESEARCH · FOUNDATION

Proliance
SURGEONS

THE STERN CENTER
FOR AESTHETICS

Class A Lobby Finishes

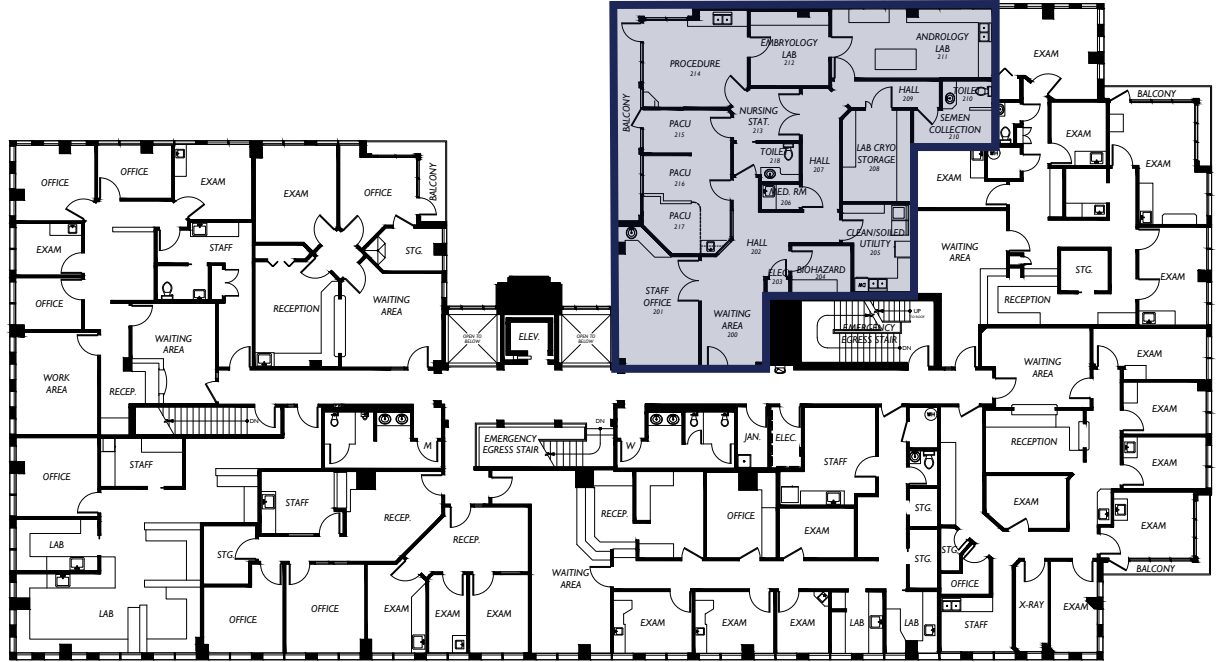




1ST FLOOR
1,138 SF

Suite 105
1,138 SF

Suite 202
2,428 SF



2ND FLOOR
2,428 SF



WALKABLE AMENITIES

57

Walk Score

53

Transit Score

53

Biker Score

TRANSIT

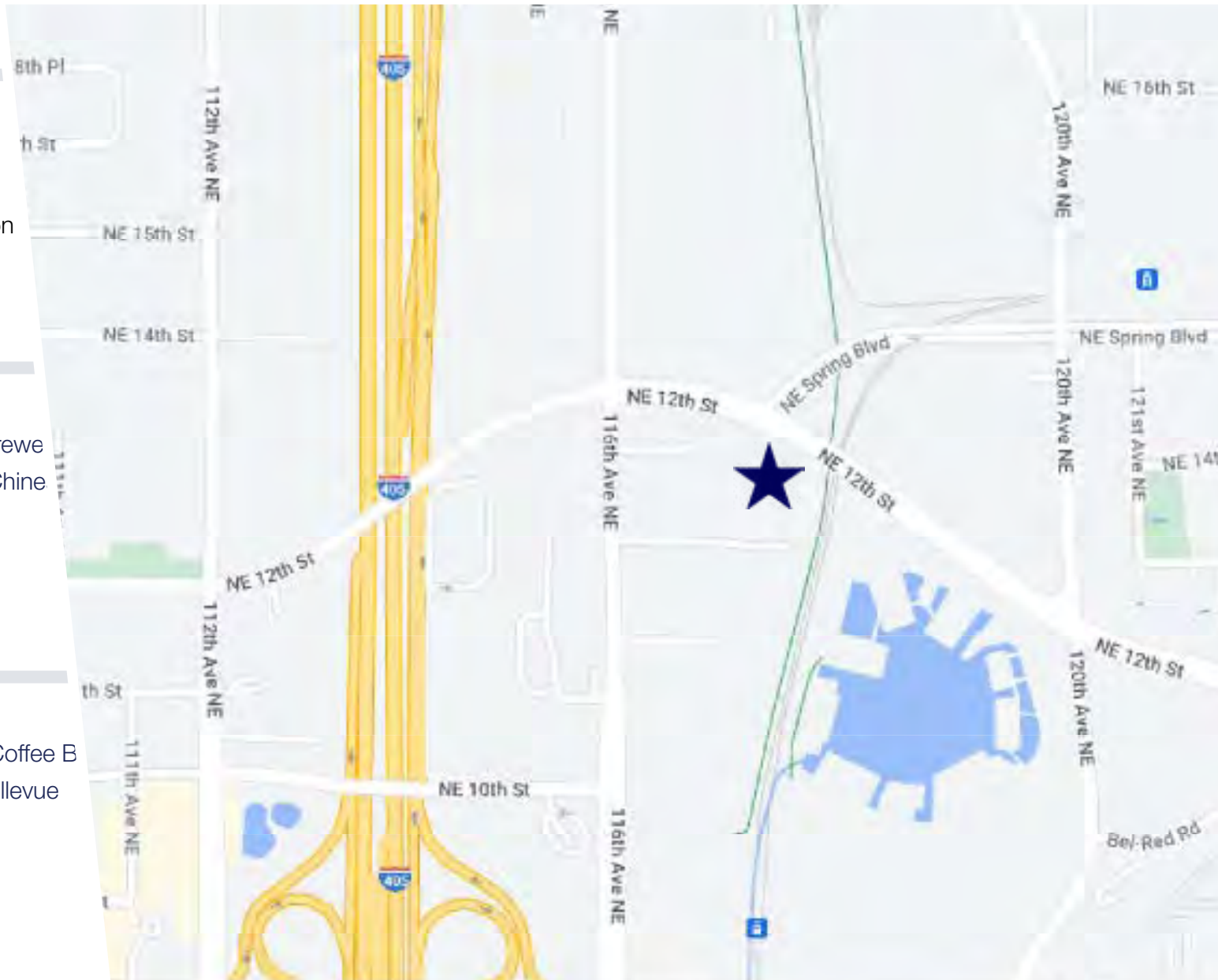
- Wilburton Station
- Future Bellevue Downtown Link
- Bel-Red Station
- Light Rail
- 112th Ave NE & Main Street
- East Main Station

EATS

- The Crab Pot
- Cascadia Pizza
- The Pumphouse Bar & Grill
- Restaurant & Brew
- 3 Pigs Bar B-Q
- Royal Kitchen Chine
- Pho Ever
- Chick-fil-A
- Market Cocina

COFFEE

- Mercurys Coffee
- Starbucks
- Spring Cafe
- Copper Kettle Coffee B
- Woods Coffee
- Story Coffee Bellevue
- Dote Coffee Bar
- Caffe Ladro
- Amore Coffee
- Cafe Aloe



CONTACT US

FLINN
FERGUSON
cresa

PETE WARSINSKE
SENIOR VICE PRESIDENT
pete@flinnferguson.com
206.626.0889

JEFF JACOBSON
SENIOR VICE PRESIDENT
jeff@flinnferguson.com
206.626.0899