

1005 W. MICHIGAN AVENUE

THREE RIVERS, MICHIGAN

LAND FOR SALE

0.59 Acres Available



SIGNATURE ASSOCIATES
KNOW SIGNATURE | KNOW RESULTS

READY FOR DEVELOPMENT



PROPERTY FEATURES

- Approximately 0.59 acres available
- Zoned Commercial
- Previously home to national chain – structure removed, parking lot in place
- Drive-thru use permitted
- Utilities stubbed in
- Sale Price: \$75,000



For more information, please contact:

CAROLYN BOJI

(616) 213 4560

cboji@signatureassociates.com

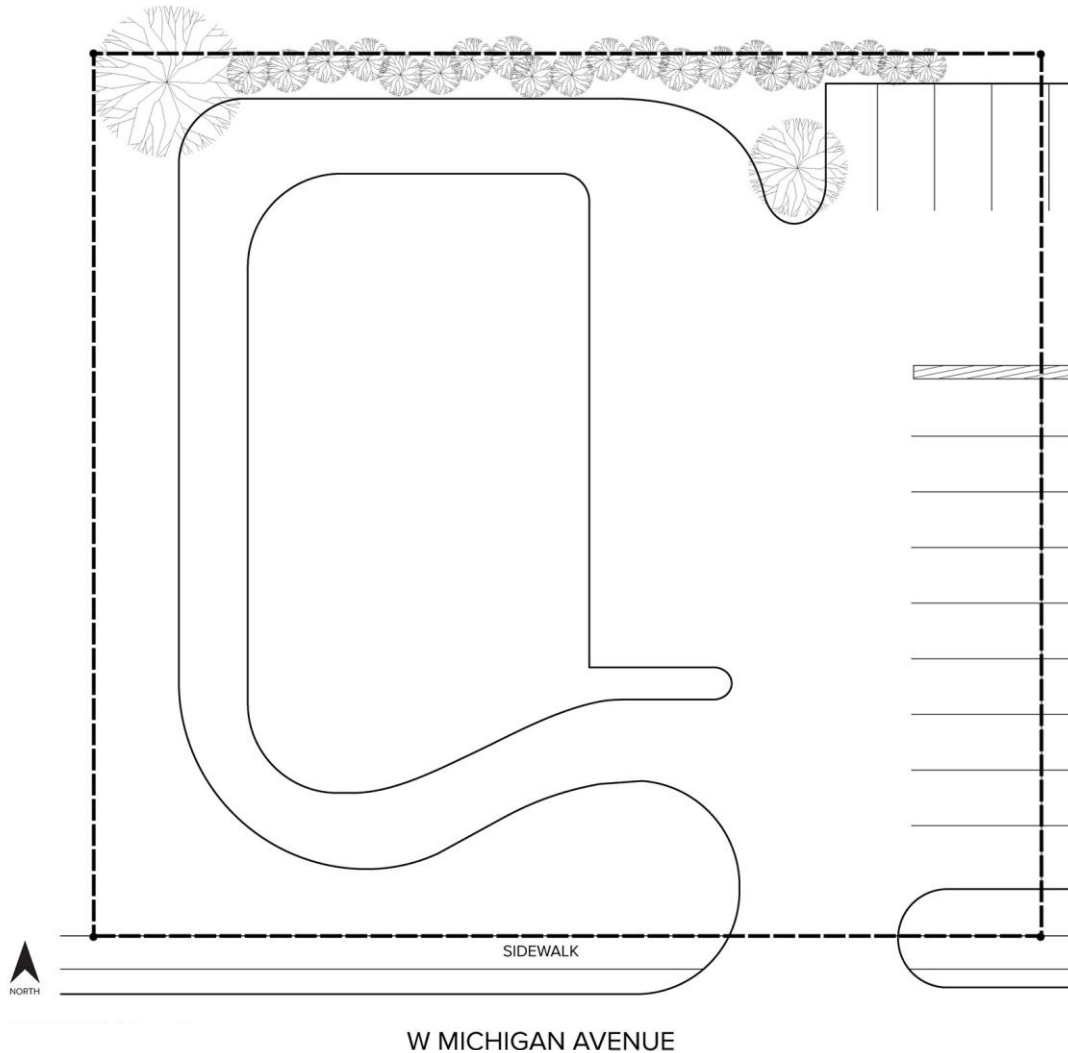
SIGNATURE ASSOCIATES
1188 East Paris Ave SE, Suite 220
Grand Rapids, MI 49546
www.signatureassociates.com

1005 W. Michigan Avenue – Three Rivers, Michigan

Land For Sale

0.59
Acres
AVAILABLE

Site Plan



DEMOGRAPHICS		
	POPULATION	MED. HH INCOME
1 MILE	4,605	\$55,286
3 MILE	11,571	\$64,704
5 MILE	15,366	\$69,812
10 MILE	33,122	\$71,482

TRAFFIC COUNTS (TWO-WAY)		
8,047	Michigan Ave east of US 131	
18,266	US 131 north of Michigan Ave	
21,198	US 131 south of Michigan Ave	

For more information, please contact:

CAROLYN BOJI

(616) 213 4560

cboji@signatureassociates.com

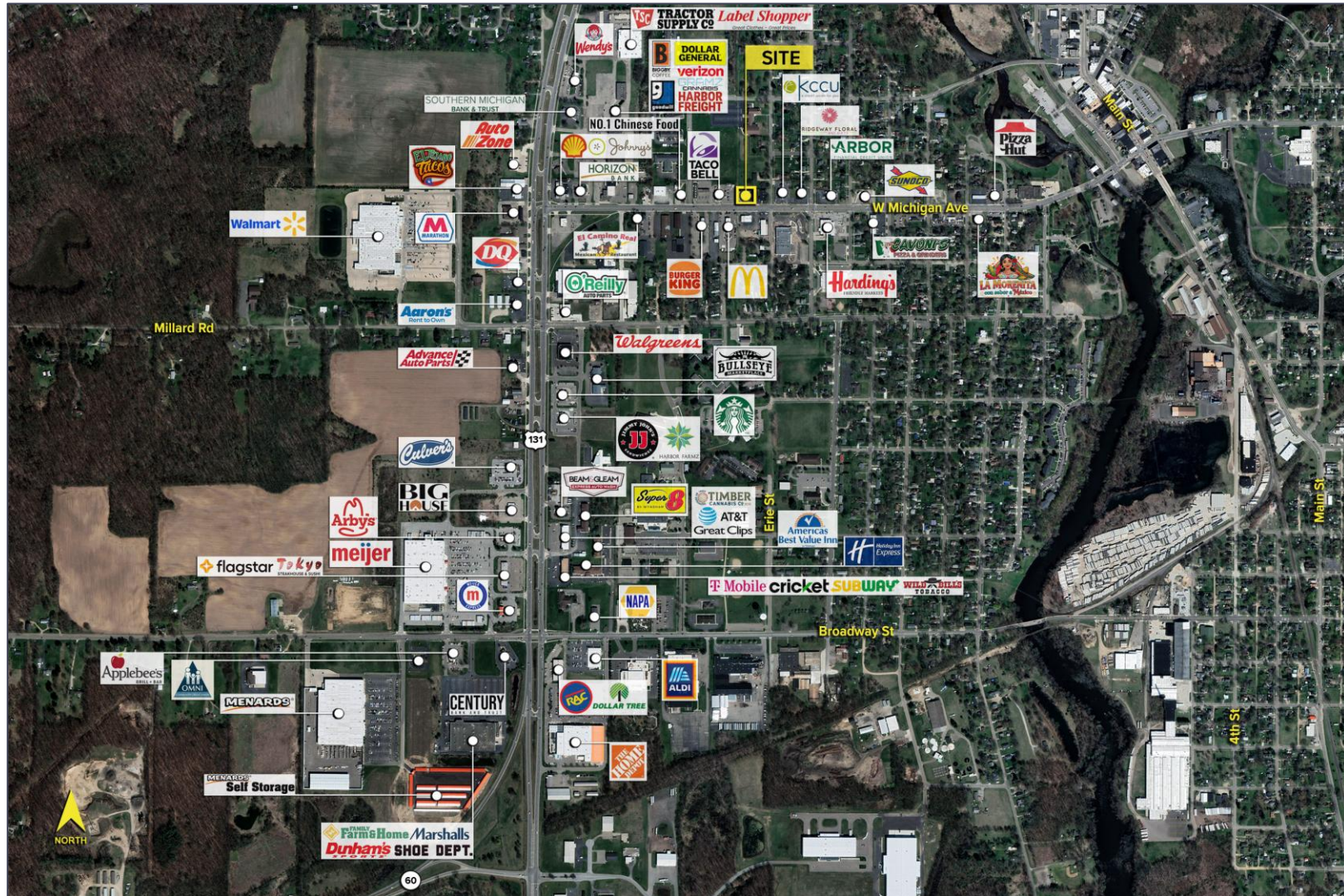
SIGNATURE ASSOCIATES
1188 East Paris Ave SE, Suite 220
Grand Rapids, MI 49546
www.signatureassociates.com

1005 W. Michigan Avenue – Three Rivers, Michigan

Land For Sale

0.59
Acres
AVAILABLE

Surrounding Retail



For more information, please contact:
CAROLYN BOJI
(616) 213 4560
cboji@signatureassociates.com

SIGNATURE ASSOCIATES
1188 East Paris Ave SE, Suite 220
Grand Rapids, MI 49546
www.signatureassociates.com