



FOREST CREEK PLAZA

5882 S 900 E, Murray, UT 84121

PROPERTY DESCRIPTION:

- Completely Remodeled Unit with Glass Conference Rooms, New Lighting, Paint, Carpet Tile & LVT in Reception Area
- Main Level Suite
- Adequate Natural Lighting in Perimeter Offices
- Abundant On-Site Parking
- Prime Suburb Location Surrounded by Amenities
- Close Freeway Access

LEASE RATE:

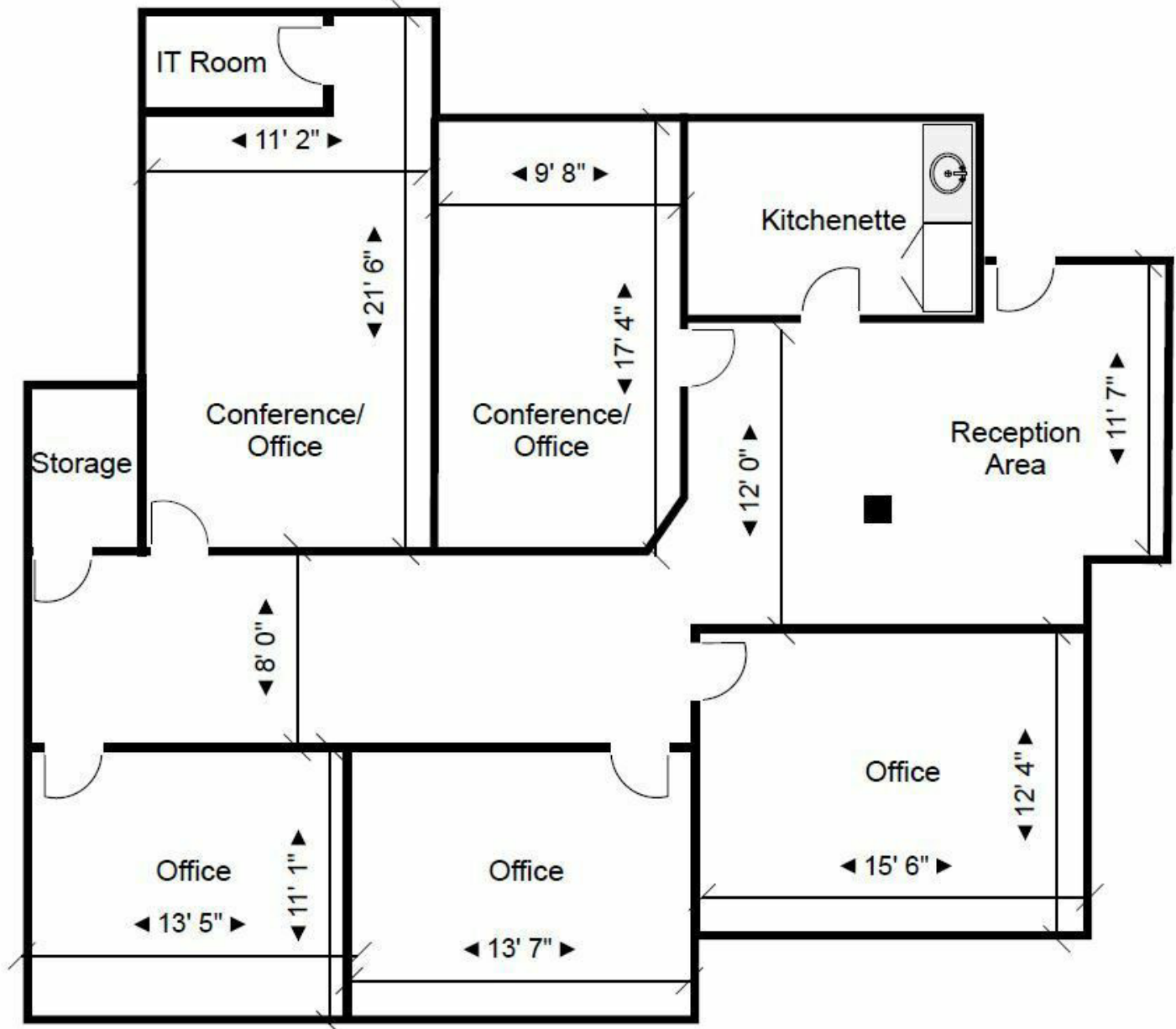
\$21.00 SF/YR
(FULL SERVICE)

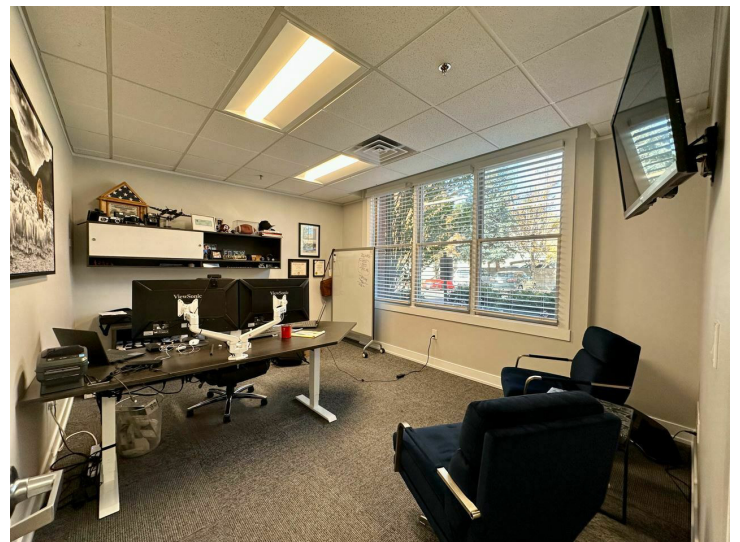
PROPERTY DETAILS:

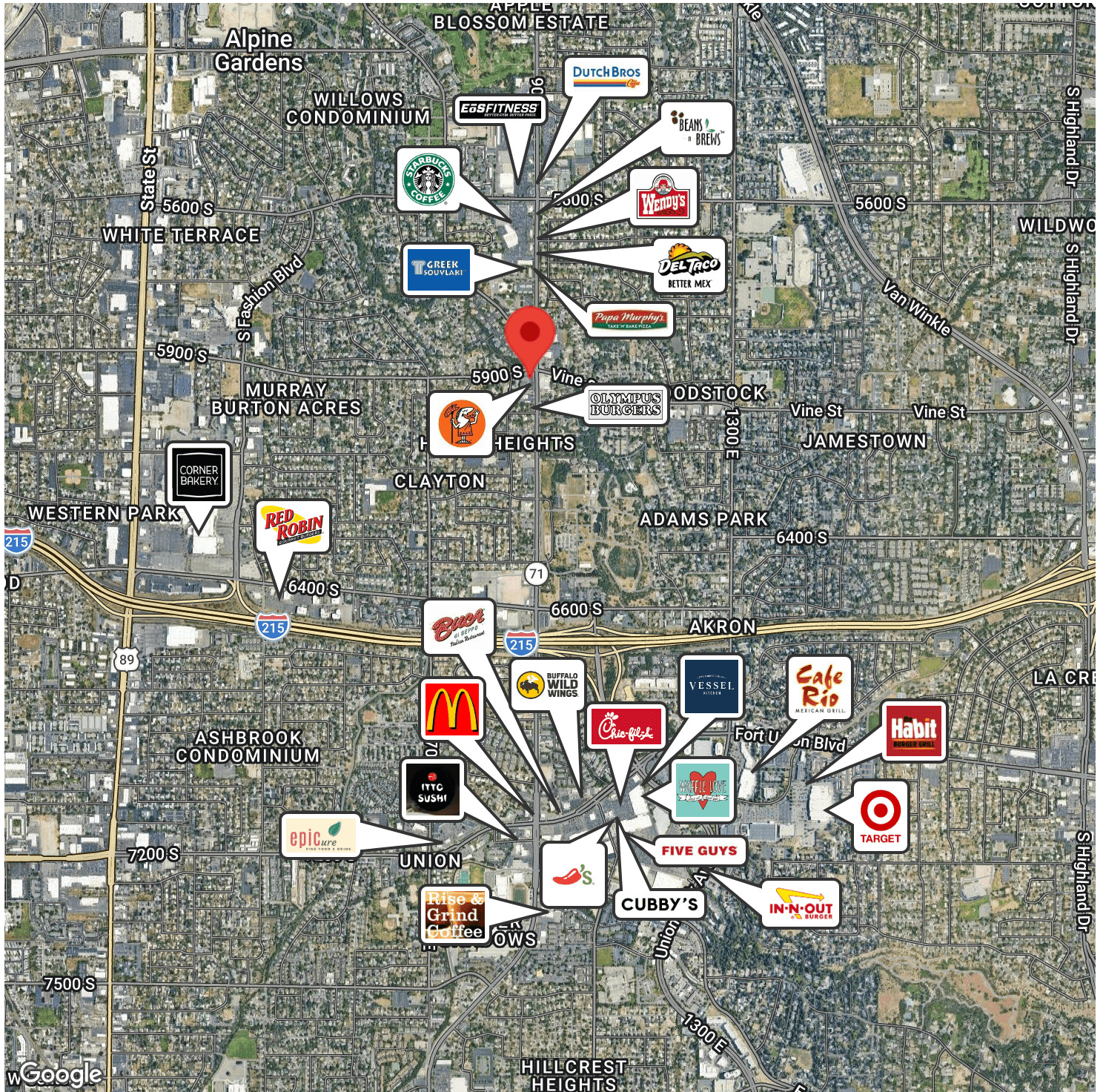
SUITE 102: 1,760 SF

CHRIS METOS
801.879.7870
chris@iproperties.com

51 East 400 South Suite 210
Salt Lake City, UT 84111
801.355.0600 | iproperties.com







CHRIS METOS
801.879.7870
chris@iproperties.com

51 East 400 South Suite 210
Salt Lake City, UT 84111
801.355.0600 | iproperties.com