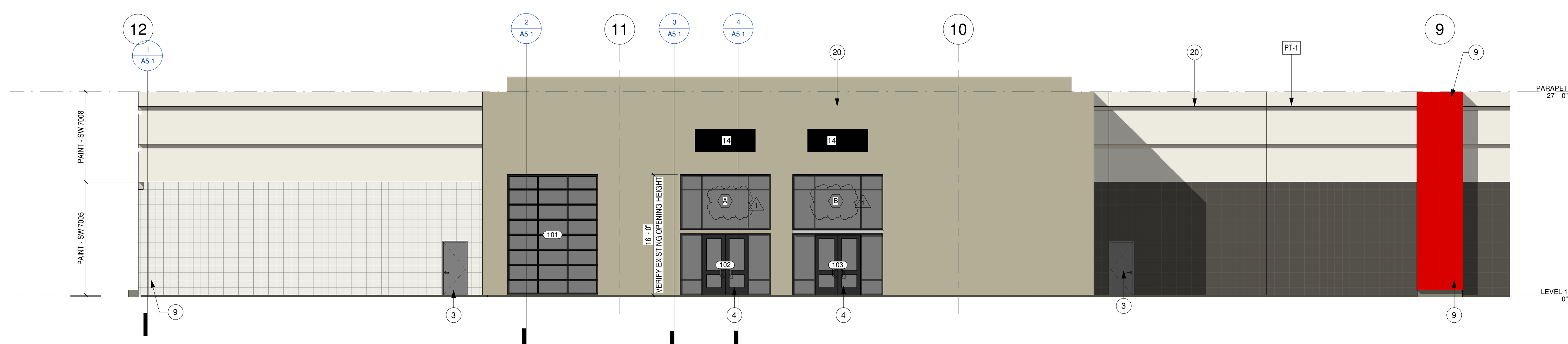
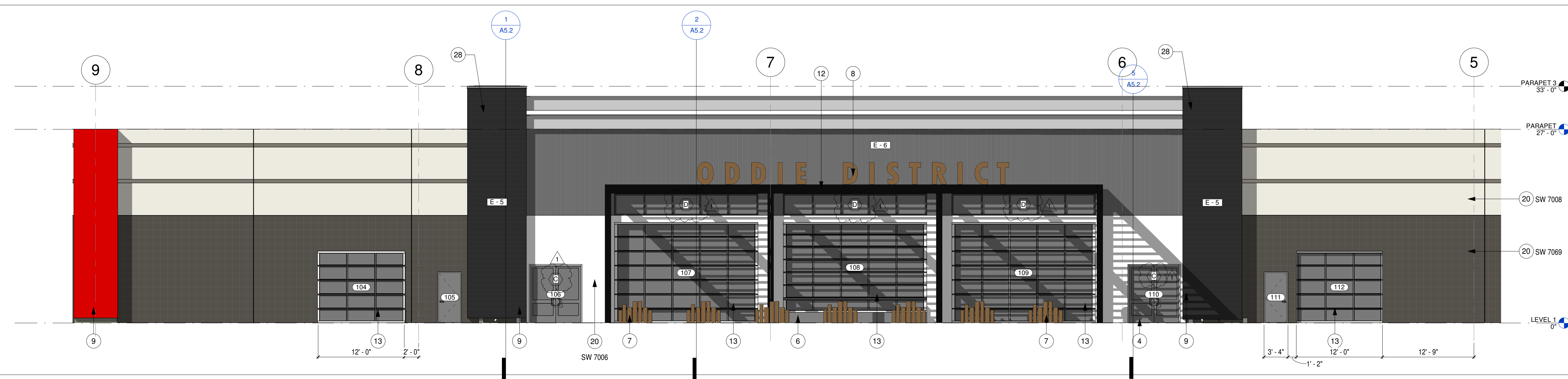


South SCALE: 1/16" = 1'-0" REF: 1/50143 1



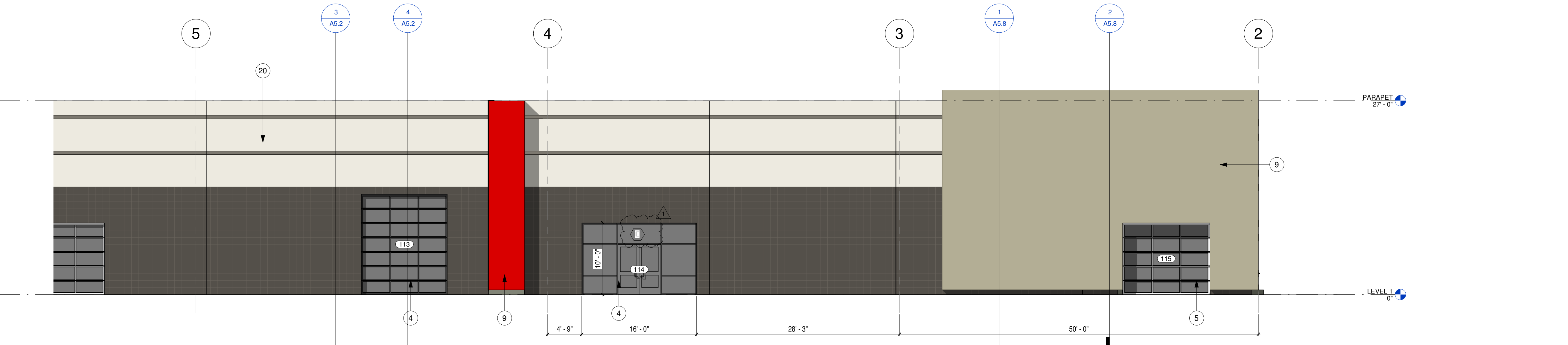
PHASE 1

PARTIAL SOUTH ELEVATION - SOUTH WEST SCALE: 1/8" = 1'-0" 2



PHASE 2

PARTIAL SOUTH ELEVATION - SOUTH CENTER SCALE: 1/8" = 1'-0" 3



PHASE 2

PARTIAL SOUTH ELEVATION - SOUTH EAST SCALE: 1/8" = 1'-0" 4

KEYNOTES

1. BLACK METAL PLANTER 3'-0" HIGH X 6'-0" LONG X 1'-6" DEEP
2. 5'-0"X5'-0" STEEL TRELLIS
3. EXISTING DOOR TO REMAIN - PAINT
4. BLACK ALUMINUM STOREFRONT, TYPICAL, BASIS OF DESIGN
5. KAWNEER TRIFAB 451, ADD INTERNAL REINFORCING AS REQUIRED
6. BLACK ALUMINUM OVER HEAD DOOR WITH TEMPERED GLASS
7. 1'-6" HIGH INDOOR / OUTDOOR DRAINAGE SYSTEM ACROSS DOOR THRESHOLD
8. 6" DIA STEEL TUBE BOLLARDS, TOP AT 4'-0" ABOVE GRADE WITH 2'-0" SET INTO 16" DIAMETER X 3' DEEP CONCRETE FOOTING
9. ILLUMINATED CHANNEL LETTERS
10. 2 COAT STUCCO OVER VAPOR BARRIER, PLYWOOD AND METAL STUDS
11. 24" STEEL WF PAINT "IRON ORE"
12. BLACK LOUVERED CANOPY
13. OVERHEAD
14. EXISTING OPENING, INFILL WITH METAL WALL PANEL TO MATCH
15. DECORATIVE METAL GATE
16. METAL SECURITY FENCE
17. STEEL SUPPORT COLUMNS
18. CANOPY - PROVIDE SHOP DRAWINGS
19. METAL ENCLOSURE - 2"x2"x3/16" TS FRAME WITH SUPPORTS AT 4'-0" O.C. MAX. WITH MCNICHOLS PERFORATED METAL SQUARE, HANOVER SQUARE 2064, CARBON STEEL, COLD ROLLED, 20 GAUGE, (0.0359" THICK), 0.200" SQUARE ON 0.250" STRAIGHT CENTERS, 64% OPEN AREA AT EXTERIOR FACE OF FRAMING. PROVIDE (2) MIN 3'-0" WIDE X 8'-0" HIGH EXIT GATES WITH CLOSER, PANIC EXIT DEVICES AND FULL LENGTH GEARED HINGES
20. PAINT ALL EXISTING EXTERIOR WALLS, CLEAN AND PREP AS REQUIRED, PRIME ONE COAT, FINISH TWO COATS, FULL GLOSS, SEE FINISH SCHEDULE
21. ALIGN CENTER OF NEW STOREFRONT WITH EXISTING DOOR
22. EXISTING STAIR AND RAILING TO REMAIN
23. NOT USED
24. TUBE STEEL COLUMN SEE STRUCTURAL
25. EXISTING STAIR COLUMN TO REMAIN
26. 3" DIA ROOF AND OVERFLOW DRAIN FROM ABOVE
27. EXISTING TS COLUMN TO REMAIN
28. JAMES HARDIE ARTISIAN SIDING "SQUARE CHANNEL"

WALL TYPES LEGEND

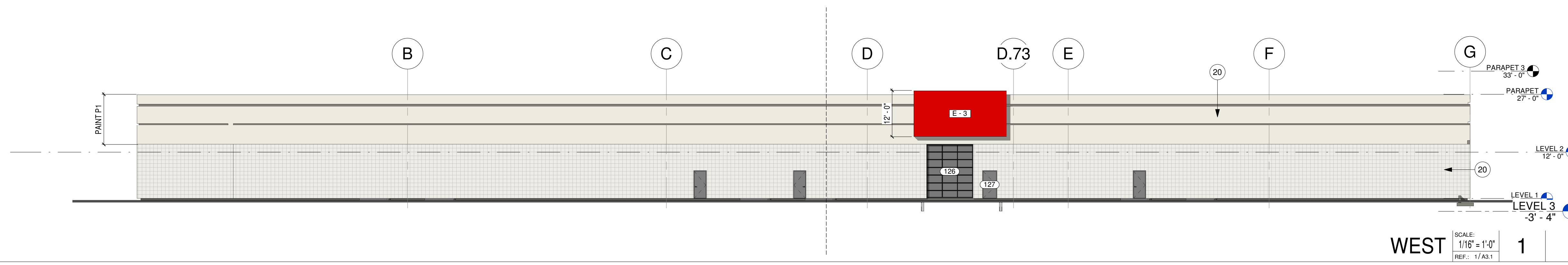
- [E-1] METAL STUDS PER STRUCTURAL SHEAR PLY, VAPOR BARRIER AND METAL SIDING
- [E-2] METAL STUDS PER STRUCTURAL SHEAR PLY, VAPOR BARRIER AND METAL SIDING EACH SIDE
- [E-3] 1206S309-88 METAL STUDS AT 16" O.C. ATTACHED TO EXISTING CONCRETE WALL WITH HELIX-U P8 3/4" AT 24" O.C. EACH STUD. 3/4" EXTERIOR GYPSUM SHEATHING ON ALL EXPOSED STUD SURFACES WITH 2 COAT STUCCO SYSTEM
- [E-4] METAL STUDS WITH SHEAR PLY PER STRUCTURAL AND BRICK VENEER SYSTEM
- [E-5] ACME KLINKER BRICK VENEER INSTALLED ON EXISTING CONCRETE WALL PER MANUFACTURERS REQUIREMENTS
- [E-6] DOUBLE METAL STUDS PER STRUCTURAL SHEAR PLY ON EXTERIOR WITH ACME KLINKER BRICK VENEER
- [E-7] METAL STUDS WITH SHEAR PLY PER STRUCTURAL AND STUCCO SYSTEM

EXTERIOR FINISH SCHEDULE

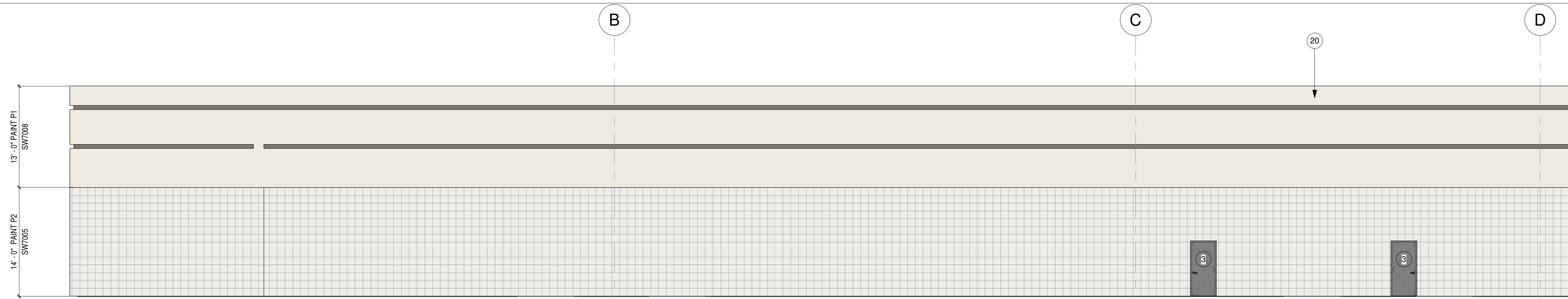
- SW 7069 IRON ORE
PAINT ON CEMENT FIBER VERTICAL COLUMNS AT MAIN ENTRY
- SW 7008 ALABASTER
TOP OF EXISTING CONCRETE WALLS
- SW 7005 PURE WHITE
BASE - EAST, NORTH, SOUTH
- SW 7006 EXTRA WHITE
STUCCO BASE - MAIN ENTRY BETWEEN ROLL UP DOORS
- SW 2860 - SAGE
PAINT AT GENERATOR ENTRY, STUCCO AT EAST END OF SOUTH WALL
- SW 7048 - URBANE BRONZE
SOUTH WALL BASE
- SW 6888 - REAL RED
SOUTH WALL VERTICAL STUCCO ACCENTS
- CORRUGATED METAL SIDING
SOUTH WALL ABOVE DOORS

FRAME PROJECT No. : 19-69
 Submittal Type: PERMIT
 Printed On: 12/23/2024 8:42:25 PM
 Drawn By: JF
 Checked By: JF

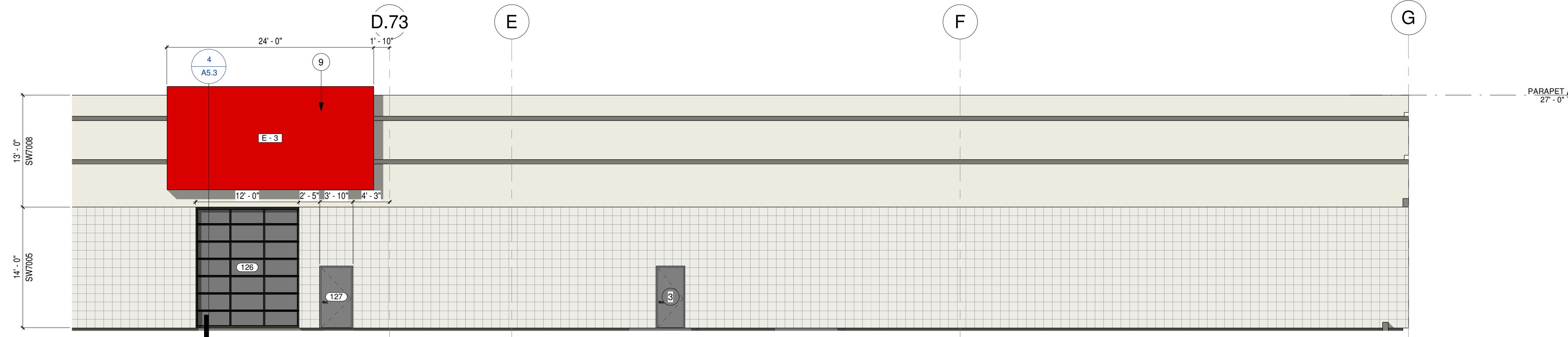
REVISION No.	DATE	DESCRIPTION	COORDINATOR
1	12-23-2024	DATE	DESCRIPTION
2	12-23-2024	DATE	DESCRIPTION
3	12-23-2024	DATE	DESCRIPTION
4	12-23-2024	DATE	DESCRIPTION



WEST ELEVATION - NORTH END
SCALE: 1/16" = 1'-0"
REF: 17A3.1



WEST ELEVATION - NORTH END
SCALE: 1/16" = 1'-0"
REF: 17A3.1



WEST ELEVATION - SOUTH END
SCALE: 1/8" = 1'-0"
REF: 17SD4.4

KEYNOTES

- BLACK METAL PLANTER 3'-0" HIGH X 6'-0" LONG X 1'-6" DEEP
- 5'-0"x5'-0" STEEL TRELIS
- EXISTING DOOR TO REMAIN - PAINT
- BLACK ALUMINUM STOREFRONT. TYPICAL. BASIS OF DESIGN
- KAWNEER TRIFAB 451. ADD INTERNAL REINFORCING AS REQUIRED
- BLACK ALUMINUM OVER HEAD DOOR WITH TEMPERED GLASS
- 1'-6" HIGH INDOOR / OUTDOOR DRAINAGE SYSTEM ACROSS DOOR THRESHOLD
- 6" DIA STEEL TUBE BOLLARDS. TOP AT 4'-0" ABOVE GRADE WITH 2'-0" SET INTO 16" DIAMETER X 3' DEEP CONCRETE FOOTING
- ILLUMINATED CHANNEL LETTERS
- 2 COAT STUCCO OVER VAPOR BARRIER, PLYWOOD AND METAL STUDS
- BLACK METAL CANOPY
- 24" STEEL WP PAINT "IRON ORE"
- BLACK LOUVERED CANOPY
- OVERHEAD
- EXISTING OPENING. INFILL WITH METAL WALL PANEL TO MATCH
- DECORATIVE METAL GATE
- METAL SECURITY FENCE
- STEEL SUPPORT COLUMNS
- CANOPY - PROVIDE SHOP DRAWINGS
- METAL ENCLOSURE - 2"x2"x3/16" TS FRAME WITH SUPPORTS AT 4'-0" O.C. MAX. WITH MONCHOLS PERFORATED METAL SQUARE. HANOVER SQUARE 2064. CARBON STEEL. COLD ROLLED. 20 GAUGE. (0.035" THICK). 0.200" SQUARE ON 0.250" STRAIGHT CENTERS. 64% OPEN AREA AT EXTERIOR FACE OF FRAMING. PROVIDE (2) MIN 3'-0" WIDE X 8'-0" HIGH EXIT GATES WITH CLOSER, PANIC EXIT DEVICES AND FULL LENGTH GEARED HINGES
- PAINT ALL EXISTING EXTERIOR WALLS. CLEAN AND PREP AS REQUIRED. PRIME ONE COAT. FINISH TWO COATS. FULL GLOSS. SEE FINISH SCHEDULE
- ALIGN CENTER OF NEW STOREFRONT WITH EXISTING DOOR
- EXISTING STAIR AND RAILING TO REMAIN
- NOT USED
- TUBE STEEL COLUMN SEE STRUCTURAL
- EXISTING STAIR COLUMN TO REMAIN
- 3" DIA ROOF AND OVERFLOW DRAIN FROM ABOVE
- EXISTING TS COLUMN TO REMAIN
- JAMES HARDIE ARTISIAN SIDING "SQUARE CHANNEL"

WALL TYPES LEGEND

- E-1** METAL STUDS PER STRUCTURAL SHEAR PLY, VAPOR BARRIER AND METAL SIDING
- E-2** METAL STUDS PER STRUCTURAL SHEAR PLY, VAPOR BARRIER AND METAL SIDING EACH SIDE
- E-3** 120S380-68 METAL STUDS AT 16" O.C. ATTACHED TO EXISTING CONCRETE WALL WITH HILTI XU P8 3/4" AT 24" O.C. EACH STUD. 3/4" EXTERIOR GYPSUM SHEATHING ON ALL EXPOSED STUD SURFACES WITH 2 COAT STUCCO SYSTEM.
- E-4** METAL STUDS WITH SHEAR PLY PER STRUCTURAL AND BRICK VENEER SYSTEM
- E-5** ACME KLUNKER BRICK VENEER INSTALLED ON EXISTING CONCRETE WALL PER MANUFACTURER'S REQUIREMENTS
- E-6** DOUBLE METAL STUDS PER STRUCTURAL SHEAR PLY ON EXTERIOR WITH ACME KLUNKER BRICK VENEER
- E-7** METAL STUDS WITH SHEAR PLY PER STRUCTURAL AND STUCCO SYSTEM

EXTERIOR FINISH SCHEDULE

- SW 7069 IRON ORE**
PAINT ON CEMENT FIBER VERTICAL COLUMNS AT MAIN ENTRY
- SW 7008 ALABASTER**
TOP OF EXISTING CONCRETE WALLS
- SW 7005 PURE WHITE**
BASE - EAST, NORTH, SOUTH
- SW 7006 EXTRA WHITE**
STUCCO BASE - MAIN ENTRY BETWEEN ROLL UP DOORS
- SW 2880 - SAGE**
PAINT AT GENERATOR ENTRY, STUCCO AT EAST END OF SOUTH WALL
- SW 7048 - URBANE BRONZE**
SOUTH WALL BASE
- SW 6868 - REAL RED**
SOUTH WALL VERTICAL STUCCO ACCENTS
- CORRUGATED METAL SIDING**
SOUTH WALL ABOVE DOORS

CONSULTANT BRANDING

CONSULTANT STAMP

Frame
ARCHITECTURE, INC



12/20/24 6:42:27 PM
ARCHITECTURAL STAMP

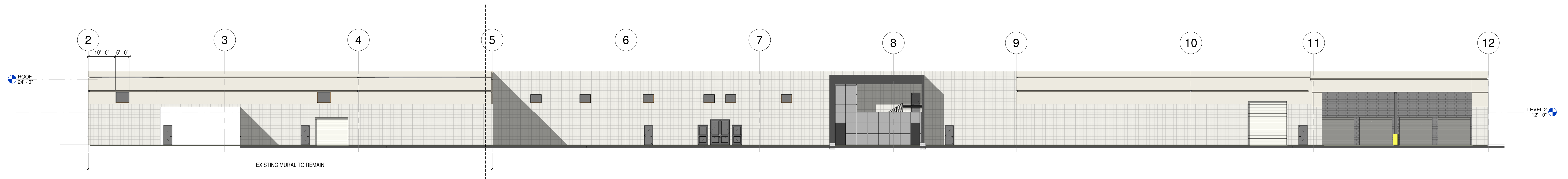
THE ODDIE DISTRICT - EXTERIOR FACADE IMPROVEMENTS

2450 ODDIE BLVD, SPARKS, NV
FOOTHILL PARTNERS, INC

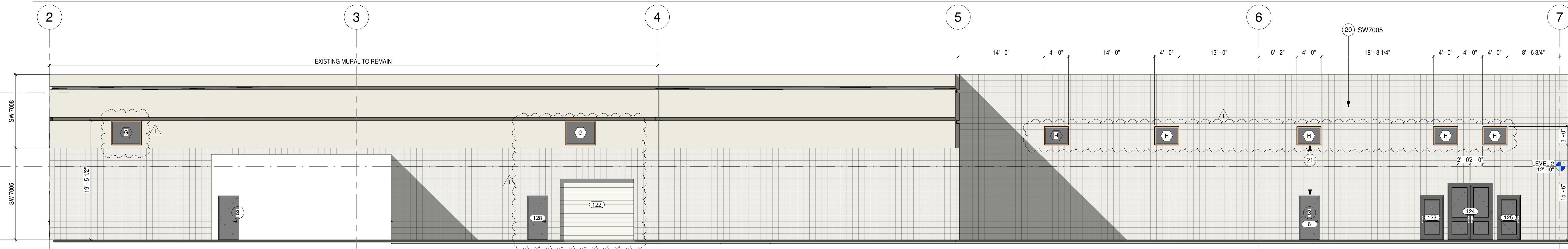
California State Board of Architectural Examiners
Professional Seal No. 19-69

FRAME PROJECT No. : 19-69
Submitted: 12-02-2024

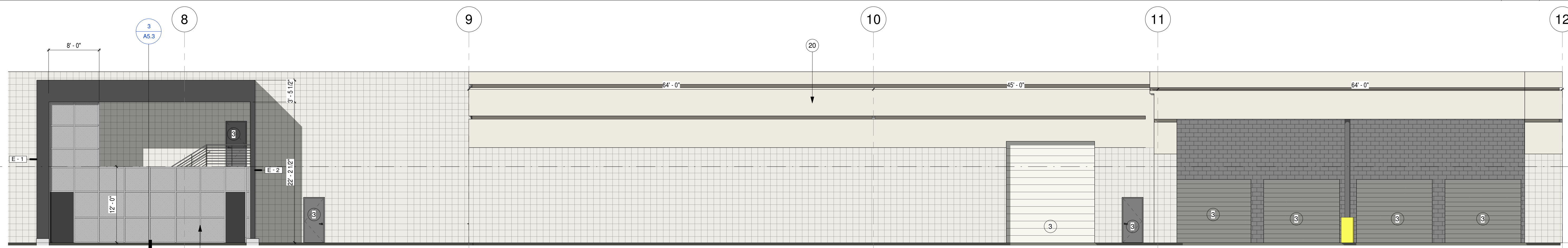
REVISION No.	DATE	DESCRIPTION



NORTH ELEVATION SCALE: 1/16" = 1'-0" REF: 17-8014-2 1



NORTH ELEVATION - EAST END SCALE: 1/8" = 1'-0" REF: 17-8014-2 2



NORTH ELEVATION - WEST END SCALE: 1/8" = 1'-0" REF: 17-8014-2 3

KEYNOTES

1. BLACK METAL PLANTER 3'-0" HIGH X 6'-0" LONG X 1'-6" DEEP
2. 5'-0"x5'-0" STEEL TRELLIS
3. EXISTING DOOR TO REMAIN - PAINT
4. BLACK ALUMINUM STOREFRONT, TYPICAL BASIS OF DESIGN
5. BLACK ALUMINUM OVER HEAD DOOR WITH TEMPERED GLASS
6. 1'-6" HIGH INDOOR / OUTDOOR DRAINAGE SYSTEM ACROSS DOOR THRESHOLD
7. 6" DIA STEEL TUBE BOLLARDS, TOP AT 4'-0" ABOVE GRADE WITH 2'-0" SET INTO 16" DIAMETER X 3' DEEP CONCRETE FOOTING
8. ILLUMINATED CHANNEL LETTERS
9. 2 COAT STUCCO OVER VAPOR BARRIER, PLYWOOD AND METAL STUDS
10. BLACK METAL CANOPY
11. 24" STEEL WF PAINT "IRON ORE"
12. BLACK LOUVERED CANOPY
13. OVERHEAD
14. EXISTING OPENING, INFILL WITH METAL WALL PANEL TO MATCH
15. DECORATIVE METAL GATE
16. METAL SECURITY FENCE
17. STEEL SUPPORT COLUMNS
18. CANOPY - PROVIDE SHOP DRAWINGS
19. METAL ENCLOSURE - 2"x2"x3/16" TS FRAME WITH SUPPORTS AT 4'-0" O.C. MAX. WITH MCNICOLS PERFORATED METAL SQUARE, HANOVER SQUARE 2064, CARBON STEEL, COLD ROLLED, 20 GAUGE, (0.035" THICK), 0.200" SQUARE ON 0.250" STRAIGHT CENTERS, 64% OPEN AREA AT EXTERIOR FACE OF FRAMING. PROVIDE (2) MIN 3'-0" WIDE X 8'-0" HIGH EXIT GATES WITH CLOSER, PANIC EXIT DEVICES AND FULL LENGTH GEARED HINGES
20. PAINT ALL EXISTING EXTERIOR WALLS, CLEAN AND PREP AS REQUIRED. PRIME ONE COAT, FINISH TWO COATS, FULL GLOSS, SEE FINISH SCHEDULE
21. ALIGN CENTER OF NEW STOREFRONT WITH EXISTING DOOR
22. EXISTING STAIR AND RAILING TO REMAIN
23. NOT USED
24. TUBE STEEL COLUMN SEE STRUCTURAL
25. EXISTING STAIR COLUMN TO REMAIN
26. 3" DIA ROOF AND OVERFLOW DRAIN FROM ABOVE
27. EXISTING TS COLUMN TO REMAIN
28. JAMES HARDIE ARTISIAN SIDING "SQUARE CHANNEL"

WALL TYPES LEGEND

- E1 METAL STUDS PER STRUCTURAL SHEAR PLY, VAPOR BARRIER AND METAL SIDING
- E2 METAL STUDS PER STRUCTURAL SHEAR PLY, VAPOR BARRIER AND METAL SIDING EACH SIDE
- E3 120SX300-68 METAL STUDS AT 16" O.C. ATTACHED TO EXISTING CONCRETE WALL WITH HILTI X-U P8 3/4" AT 24" O.C. EACH STUD. 3/4" EXTERIOR GYPSUM SHEATHING ON ALL EXPOSED STUD SURFACES WITH 2 COAT STUCCO SYSTEM.
- E4 METAL STUDS WITH SHEAR PLY PER STRUCTURAL AND BRICK VENEER SYSTEM
- E5 120SX300-68 METAL STUDS AT 16" O.C. ATTACHED TO EXISTING CONCRETE WALL PER MANUFACTURER'S REQUIREMENTS
- E6 DOUBLE METAL STUDS PER STRUCTURAL SHEAR PLY ON EXTERIOR WITH ACME KLINKER BRICK VENEER
- E7 METAL STUDS WITH SHEAR PLY PER STRUCTURAL AND STUCCO SYSTEM

EXTERIOR FINISH SCHEDULE

- SW 7069 IRON ORE
PAINT ON CEMENT FIBER VERTICAL COLUMNS AT MAIN ENTRY
- SW 7008 ALABASTER
TOP OF EXISTING CONCRETE WALLS
- SW 7005 PURE WHITE
BASE - EAST, NORTH, SOUTH
- SW 7006 EXTRA WHITE
STUCCO BASE - MAIN ENTRY BETWEEN ROLL UP DOORS
- SW 2860 - SAGE
PAINT AT GENERATOR ENTRY. STUCCO AT EAST END OF SOUTH WALL
- SW 7048 - URBANE BRONZE
SOUTH WALL BASE
- SW 8908 - REAL RED
SOUTH WALL VERTICAL STUCCO ACCENTS
- CORRUGATED METAL SIDING
SOUTH WALL ABOVE DOORS

CONSULTANT BRANDING

CONSULTANT STAMP

Frame
ARCHITECTURE, INC



12/22/24 8:42:30 PM
ARCHITECTURAL STAMP

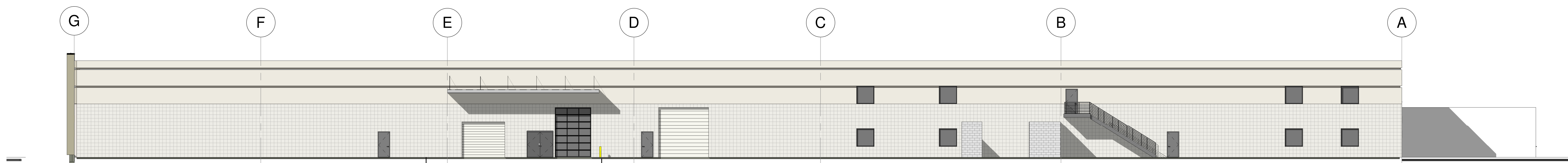
THE ODDIE DISTRICT - EXTERIOR FACADE IMPROVEMENTS

2450 ODDIE BLVD, SPARKS, NV
FOOTHILL PARTNERS, INC

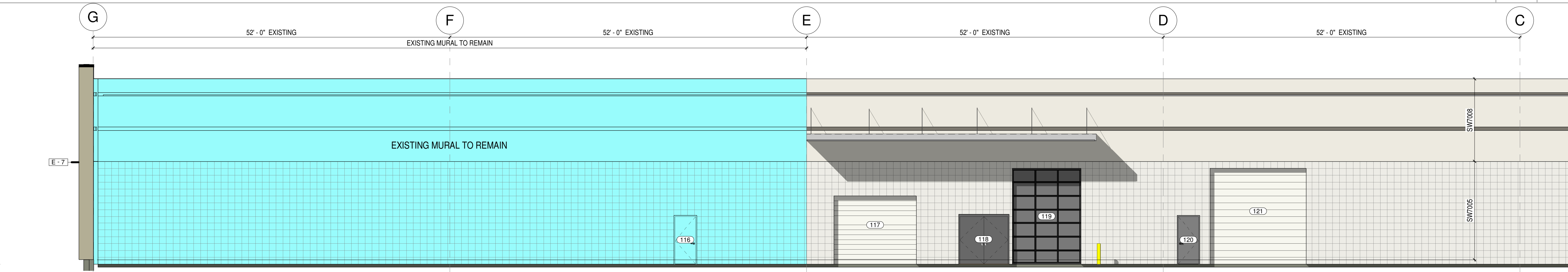
California State Board of Architectural Examiners
 License No. 19-69
 Project Name: Oddie District
 Project Address: 2450 Oddie Blvd, Sparks, NV

FRAME PROJECT No. : 19-69
 Submittal Type: PERMIT
 Printed On: 12/22/2024 8:42:30 PM
 Drawn By: JF
 Checked By: JF

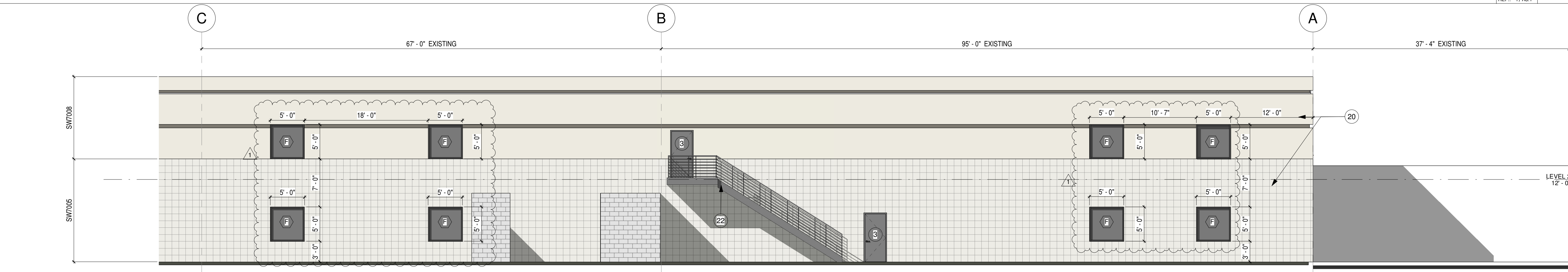
REVISION No.	DATE	DESCRIPTION	COORDINATION



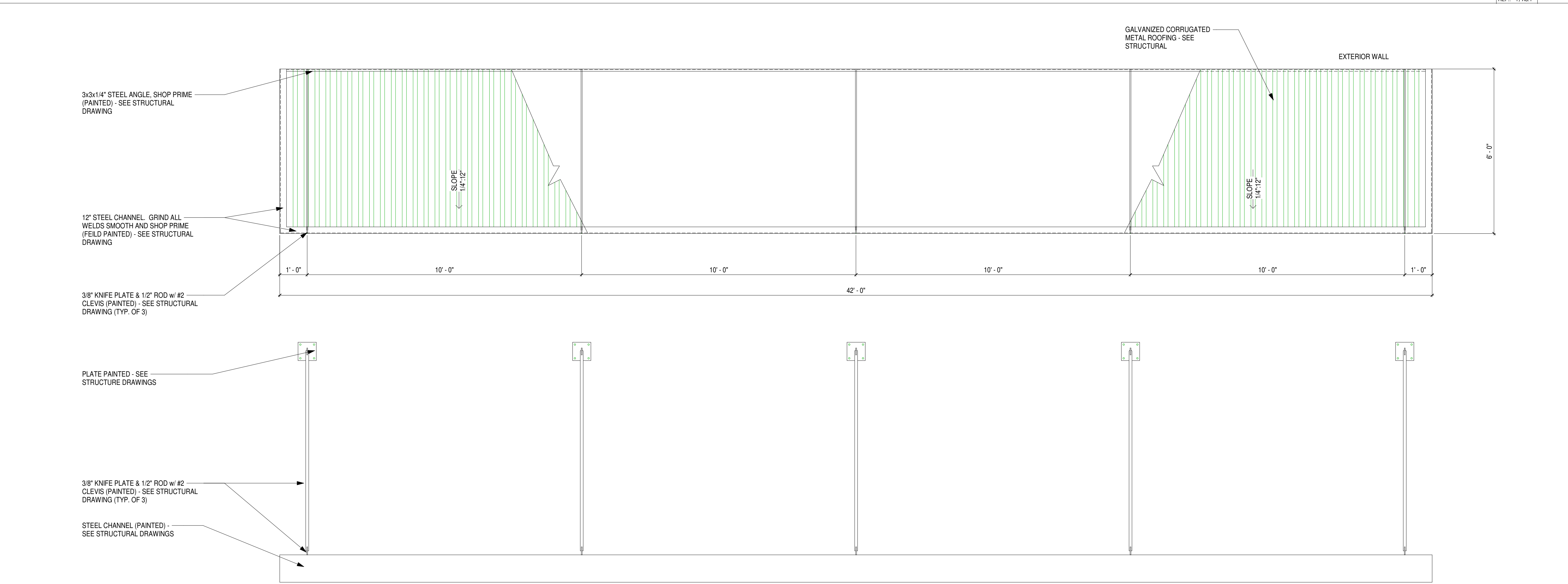
EAST ELEVATION SCALE: 1/18" = 1'-0" REF.: 17.A3.1 1



EAST ELEVATION - SOUTH END SCALE: 1/18" = 1'-0" REF.: 17.A3.1 2



EAST ELEVATION - NORTH END SCALE: 1/18" = 1'-0" REF.: 17.A3.1 3



EAST CANOPY DETAIL SCALE: 1/2" = 1'-0" 4

KEYNOTES

1. BLACK METAL PLANTER 3'-0" HIGH X 6'-0" LONG X 1'-6" DEEP
2. 5'-0"x5'-0" STEEL TRELLIS
3. EXISTING DOOR TO REMAIN - PAINT
4. BLACK ALUMINUM STOREFRONT, TYPICAL BASIS OF DESIGN KAWNEER TRIFAB 451. ADD INTERNAL REINFORCING AS REQUIRED
5. BLACK ALUMINUM OVER HEAD DOOR WITH TEMPERED GLASS
6. 1'-0" HIGH INDOOR/ OUTDOOR DRAINAGE SYSTEM ACROSS DOOR THRESHOLD
7. 6" DIA STEEL TUBE BOLLARDS, TOP AT 4'-0" ABOVE GRADE WITH 2'-0" SET INTO 18" DIAMETER X 3' DEEP CONCRETE FOOTING
8. ILLUMINATED CHANNEL LETTERS
9. 2 COAT STUCCO OVER VAPOR BARRIER, PLYWOOD AND METAL STUDS
10. BLACK METAL CANOPY
11. 24" STEEL WF PAINT "IRON ORE"
12. BLACK LOUVERED CANOPY
13. OVERHEAD
14. EXISTING OPENING, INFILL WITH METAL WALL PANEL TO MATCH
15. DECORATIVE METAL GATE
16. METAL SECURITY FENCE
17. STEEL SUPPORT COLUMNS
18. CANOPY - PROVIDE SHOP DRAWINGS
19. METAL ENCLOSURE - 2"x2"x3/16" TS FRAME WITH SUPPORTS AT 4'-0" O.C. MAX. WITH MONICHOLES PERFORATED METAL SQUARE, HANOVER SQUARE 2064, CARBON STEEL, COLD ROLLED, 20 GAUGE (0.039" THICK), 0.200" SQUARE ON 0.200" STRAIGHT CENTERS, 64% OPEN AREA AT EXTERIOR FACE OF FRAMING. PROVIDE (2) MIN 3'-0" WIDE X 8'-0" HIGH EXIT GATES WITH CLOSER, PANIC EXIT DEVICES AND FULL LENGTH GEARED HINGES
20. PAINT ALL EXISTING EXTERIOR WALLS, CLEAN AND PREP AS REQUIRED. PRIME ONE COAT, FINISH TWO COATS, FULL GLOSS. SEE FINISH SCHEDULE
21. ALIGN CENTER OF NEW STOREFRONT WITH EXISTING DOOR
22. EXISTING STAIR AND RAILING TO REMAIN
23. NOT USED
24. TUBE STEEL COLUMN SEE STRUCTURAL
25. EXISTING STAIR COLUMN TO REMAIN
26. 3" DIA ROOF AND OVERFLOW DRAIN FROM ABOVE
27. EXISTING TS COLUMN TO REMAIN
28. JAMES HARDIE ARTISIAN SIDING "SQUARE CHANNEL"

EXTERIOR FINISH SCHEDULE

- SW 7069 IRON ORE
PAINT ON CEMENT FIBER VERTICAL COLUMNS AT MAIN ENTRY
- SW 7008 ALABASTER
TOP OF EXISTING CONCRETE WALLS
- SW 7005 PURE WHITE
BASE - EAST, NORTH, SOUTH
- SW 7006 EXTRA WHITE
STUCCO BASE - MAIN ENTRY BETWEEN ROLL UP DOORS
- SW 2860 - SAGE
PAINT AT GENERATOR ENTRY, STUCCO AT EAST END OF SOUTH WALL
- SW 7048 - URBANE BRONZE
SOUTH WALL BASE
- SW 8886 - REAL RED
SOUTH WALL VERTICAL STUCCO ACCENTS
- CORRUGATED METAL SIDING
SOUTH WALL ABOVE DOORS

FRAME PROJECT No. : 19-69
 Submittal Type: PERMIT
 Printed On: 12/23/2024 8:42:35 PM
 Drawn By: JF Checked By: JF
 REVISION No. DATE DESCRIPTION
 REVISION No. DATE DESCRIPTION
 REVISION No. DATE DESCRIPTION
 REVISION No. DATE DESCRIPTION

CONSULTANT BRANDING

CONSULTANT STAMP

Frame
ARCHITECTURE, INC

JEFFERY L. FRAME
REGISTERED ARCHITECT
STATE OF NEVADA
No. 3804

12/23/2024 8:42:35 PM
ARCHITECTURAL STAMP

THE ODDIE DISTRICT - EXTERIOR FACADE IMPROVEMENTS

2450 ODDIE BLVD, SPARKS, NV
FOOTHILL PARTNERS, INC

4990 SOUTH MCCARRAN BOULEVARD, UNIT E RENO NEVADA 89502 | (775) 827-9977