



**1630 E. MISSION BLVD.
POMONA, CA 91766**

KALEO
REAL ESTATE COMPANY

**Listing Presented By:
Danielle Fontes
DRE #01879474**

DRE # 01943113



PROPERTY DETAILS:

- Zoned Workplace District 3 (WD3)
- Square Feet: 2,100
- Lot Square Feet: 27,934
- 0.64 acres
- Year Built: 1979
- Current Use: Auto Repair
 - month to month tenant
- 3 repair bays
- Parking: Paved and Fenced Yard
- Close to 71, 60, and 10, freeways



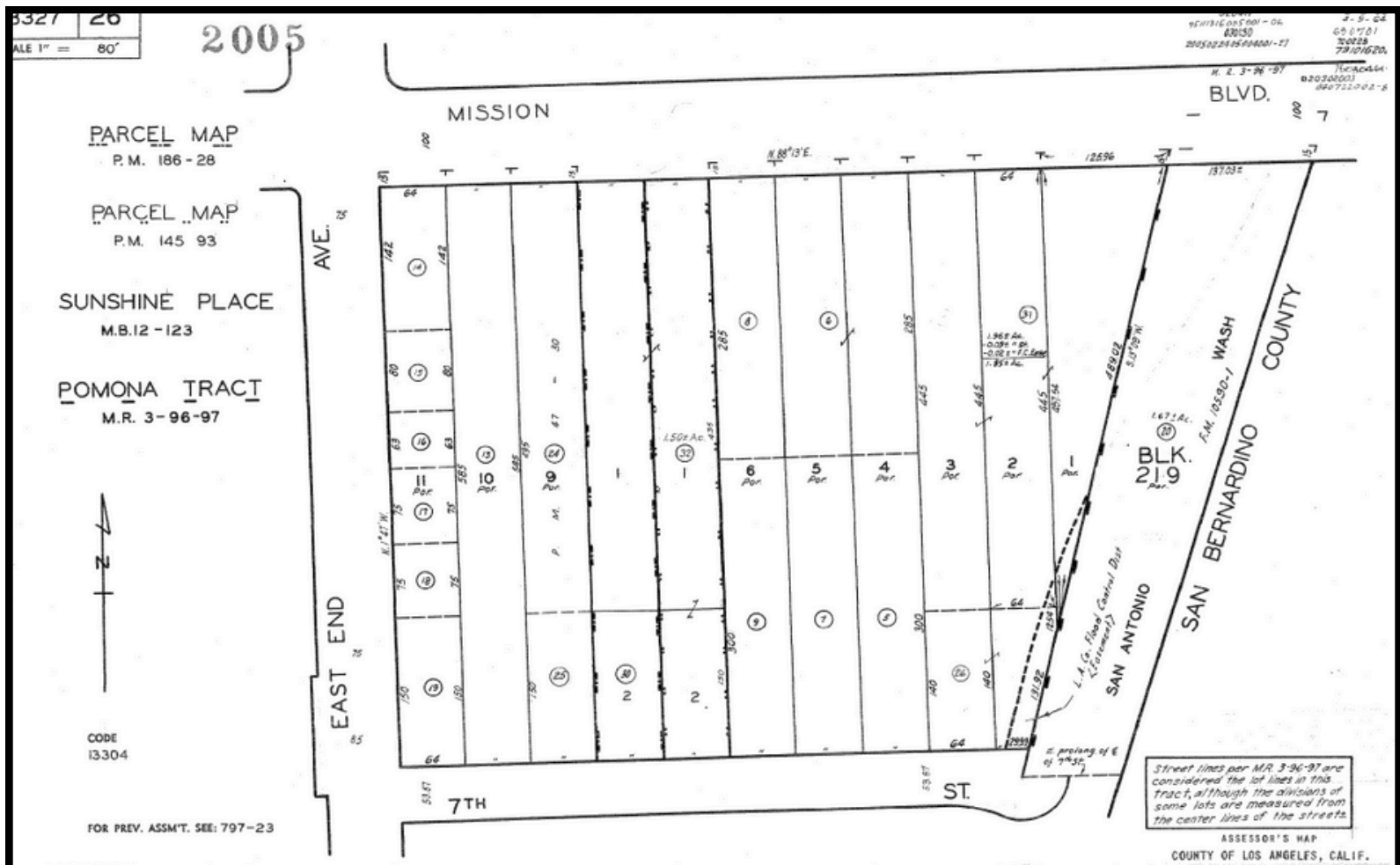
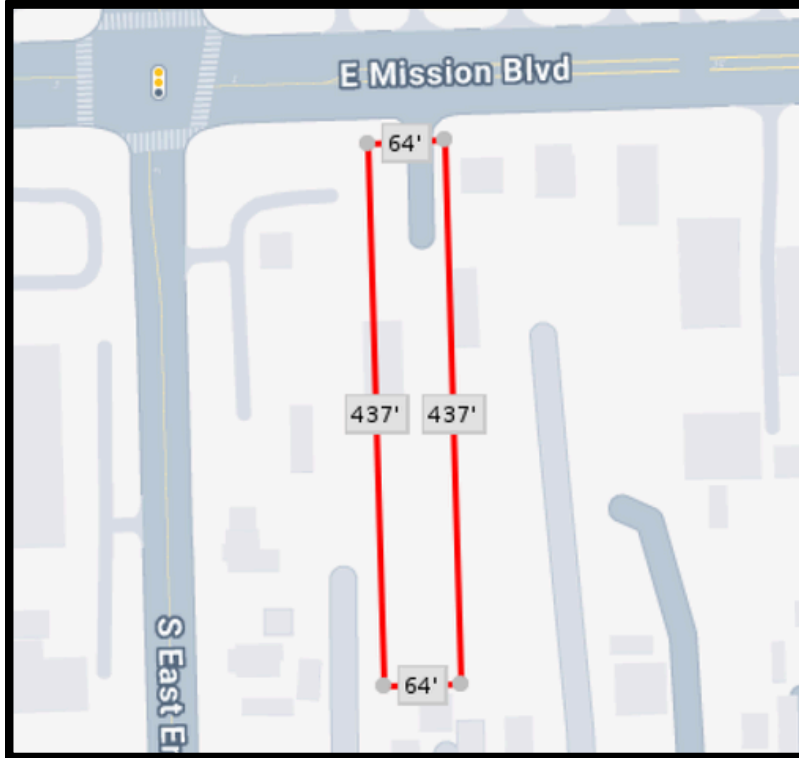
WORKPLACE DISTRICT 3 (WD3)

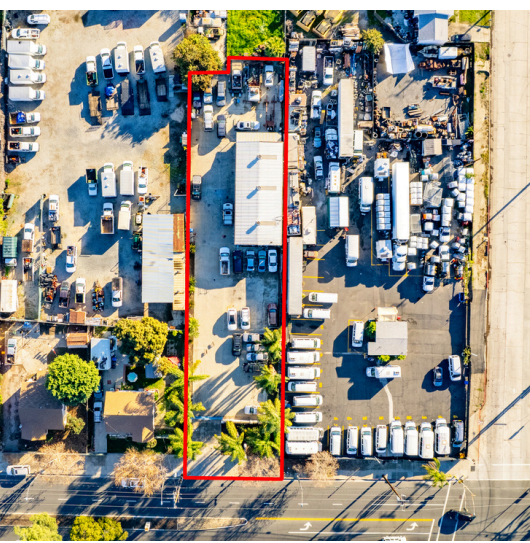
Workplace District 3 (WD3)	Low-Rise Medium 4 (LM4)	-	General 2 (G2)	-	Industrial 2 (I2)	Sites with low-rise buildings up to 4 stories tall, screened from the street with less active ground stories, and medium industrial primary uses.
	Sec. 330.D		Sec. 440.B		Sec. 520.C	

**SCAN TO VIEW CITY OF POMONA
PLANNING DOCUMENTS**



APN: 8327-026-024







LISTING AGENT:



Danielle Fontes
Commercial Principal
DRE #01879474
(626) 512-1826
Danielle@FontesRealty.com

KALEO
REAL ESTATE COMPANY

DRE #01943113