

FOR SALE OR LEASE

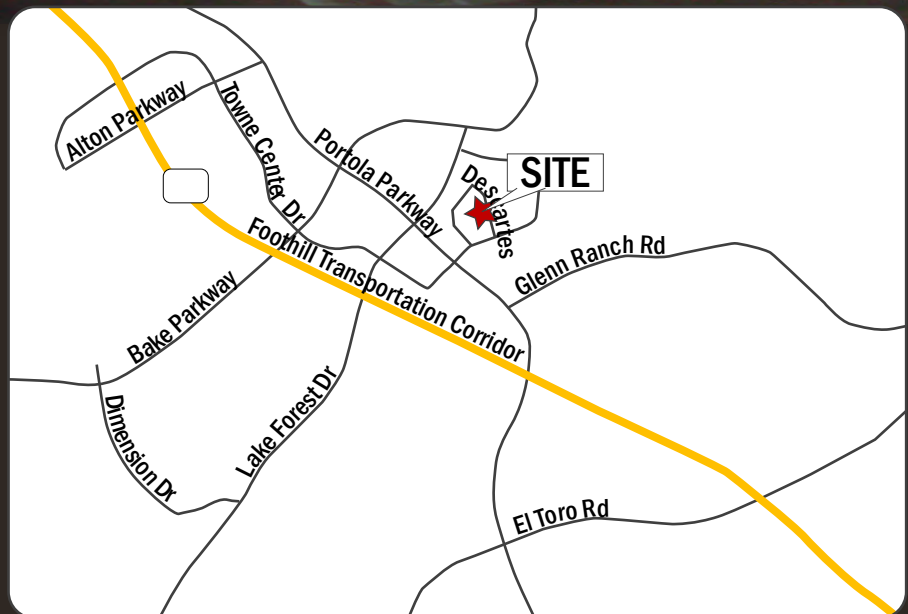
7,477 Square Foot, Freestanding Industrial Building



19655 Descartes | Foothill Ranch

Property Features:

- 7,477 sq. ft. building
- 4,002 sq. ft. of office space
- 1,200 sq. ft. of lab/assembly/testing area
- Energy-efficient industrial facility with on-site solar
- Freestanding building
- High image
- 3:1 parking
- Two (2) ground level doors
- Fire sprinklered
- Easy access to 241 Foothill Transportation Corridor



For more information, please contact:

MARK JERUE
Senior Vice President
License ID# 01073399
(949) 790-3121
mjerue@lee-associates.com

CRAIG FITTERER
Senior Vice President
License ID# 01246929
(949) 790-3123
cfitterer@lee-associates.com

BJ FELL
Senior Vice President
License ID# 01929179
(949) 790-3144
bfell@lee-associates.com

FOR SALE OR LEASE

7,477 Square Foot, Freestanding Industrial Building



19655 Descartes | Foothill Ranch

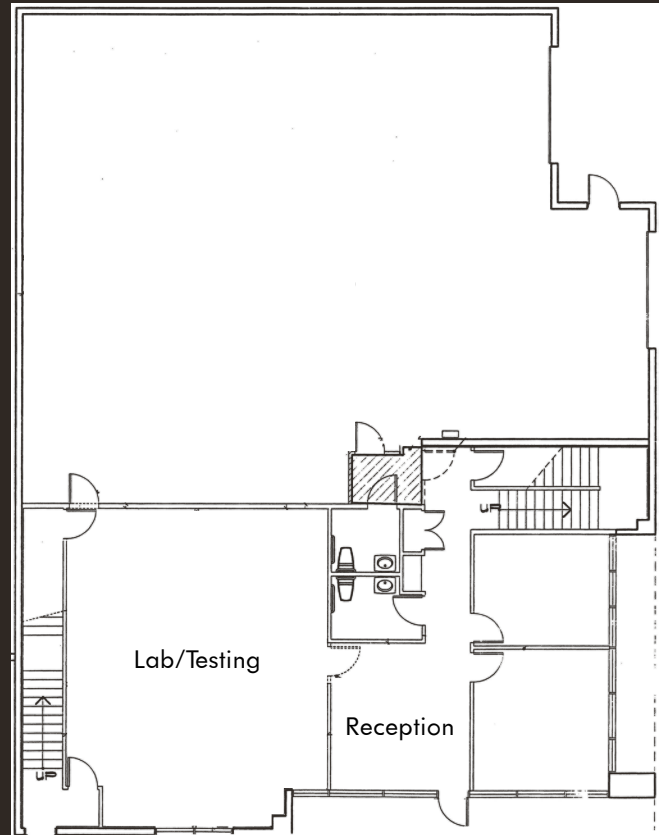
For more information, please contact:

MARK JERUE
Senior Vice President
License ID# 01073399
(949) 790-3121
mjerue@lee-associates.com

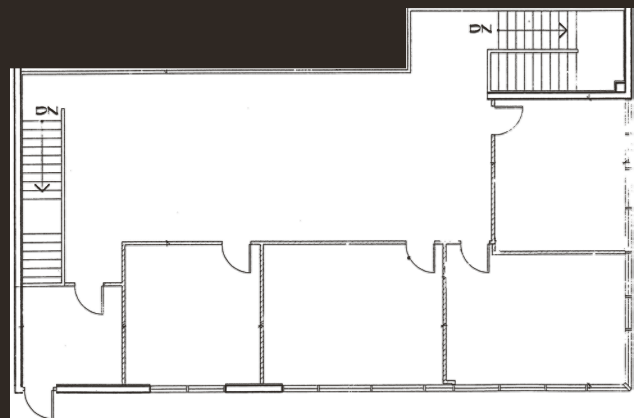
CRAIG FITTERER
Senior Vice President
License ID# 01246929
(949) 790-3123
cfitterer@lee-associates.com

BJ FELL
Senior Vice President
License ID# 01929179
(949) 790-3144
bfell@lee-associates.com

Lee & Associates - Irvine, Inc.
9838 Research Drive
Irvine, California 92618
P 949.727.1200 | F 949.727.1299
www.lee-associates.com



F
I
R
S
T
F
L
O
O
R



S
E
C
O
N
D
F
L
O
O
R



COMMERCIAL REAL ESTATE SERVICES

No warranty or representation is made to the accuracy of the foregoing information. Terms of sale or lease and availability are subject to change or withdrawal without notice.