



555 Day Hill Road
Windsor, CT 06095



Day Hill Village Shoppes (555 Day Hill Road, Windsor, CT) is a ~34,380 SF, multi-tenant retail/office/medical property in a high-growth, 3,300-acre corporate corridor. Anchored by its local, community-centered pillars - BrightPath Kids, Day Hill Deli, Huasteca Mexican Restaurant, and more - it offers high-visibility commercial space. The area is heavily industrial/logistics-focused, with huge demand for supporting retail/amenities for 15,000+ local employees.

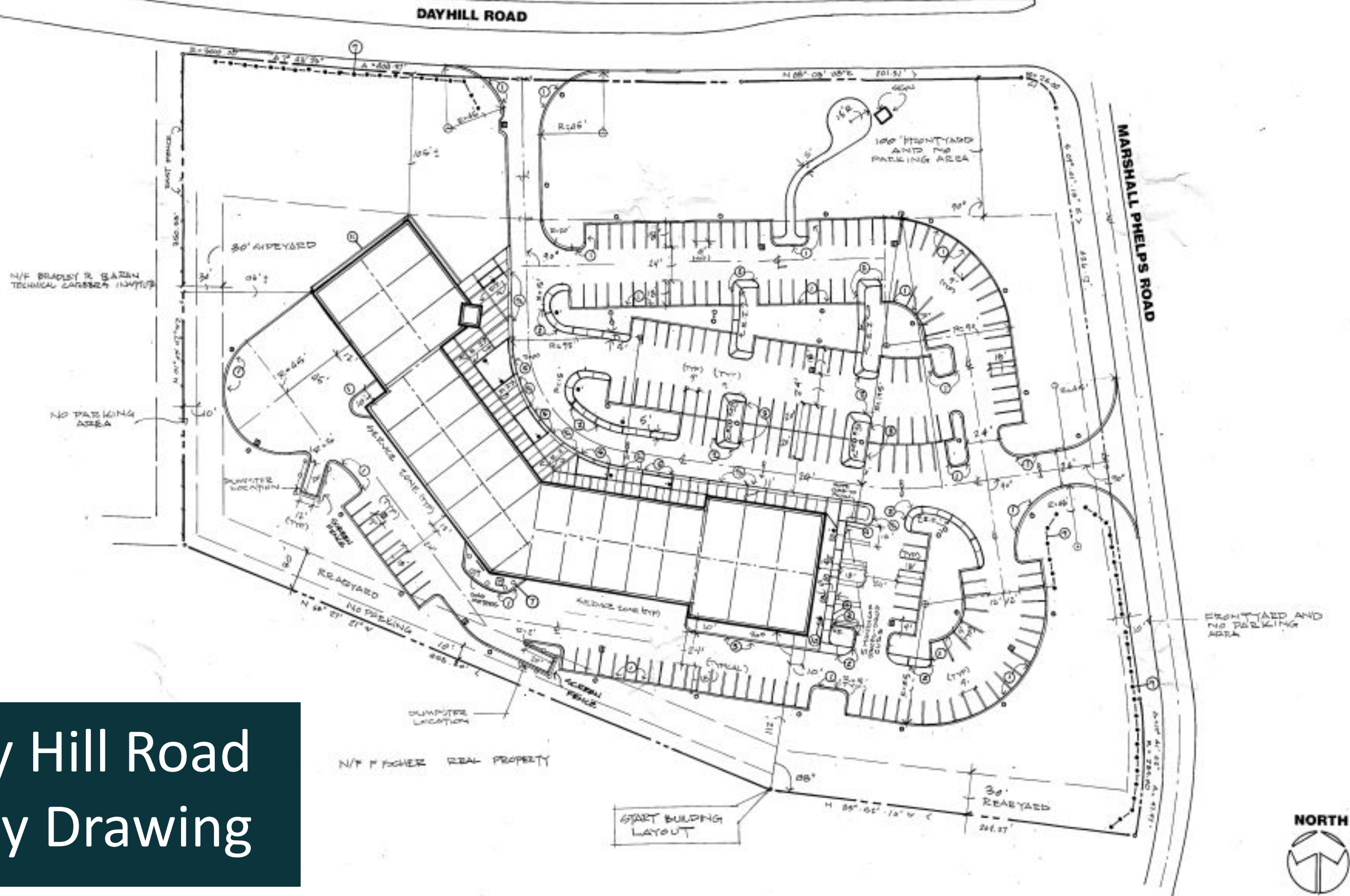


An Overview of the Shoppes

Day Hill Village Shoppes



555 Day Hill Road Property Drawing



AVAILABLE SPACE

Fully Equipped Restaurant

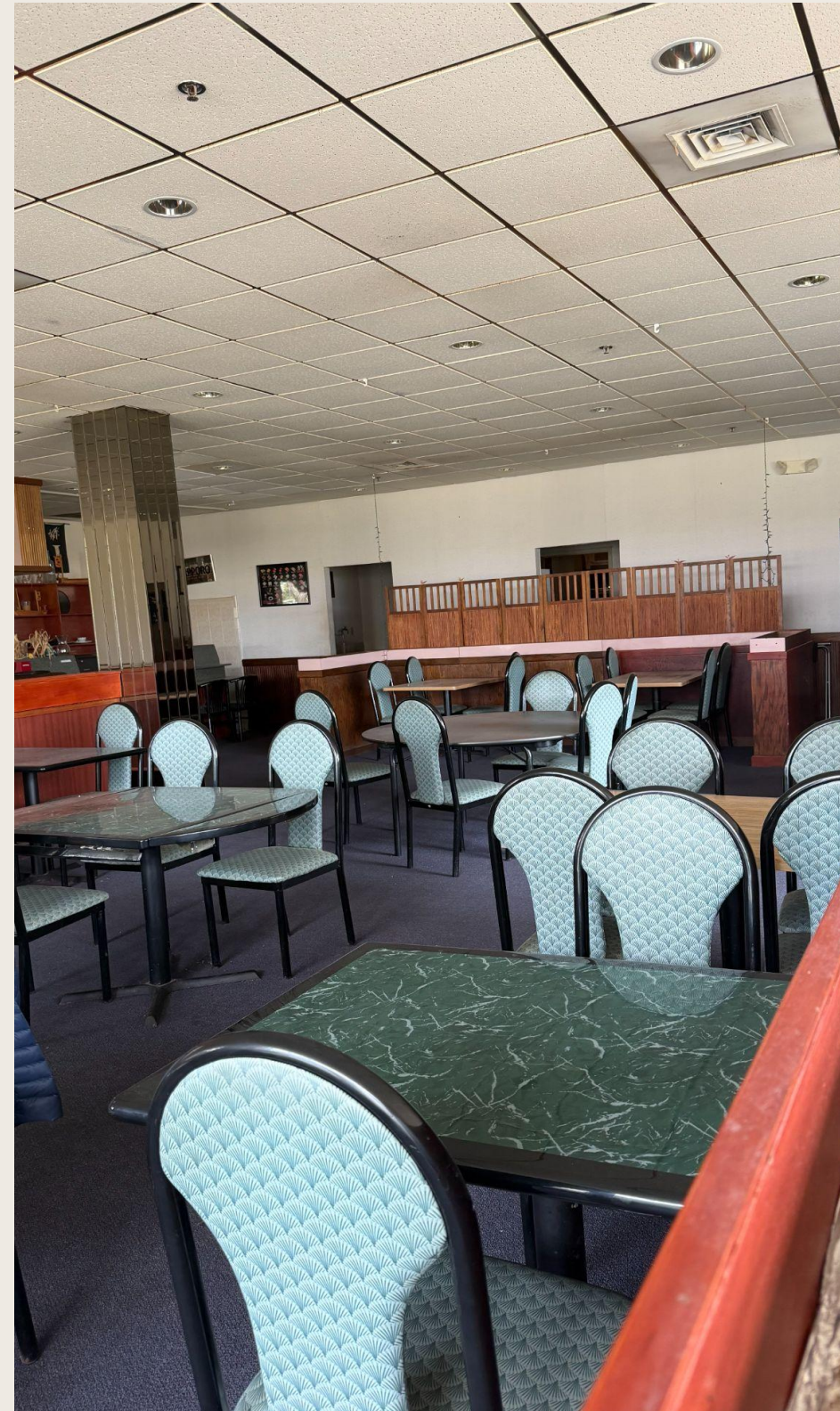
Space

- 4,182 sq/ft
- restaurant outfitted
 - commercial equipped kitchen
 - furnished seating
- Ample parking



AVAILABLE SPACE

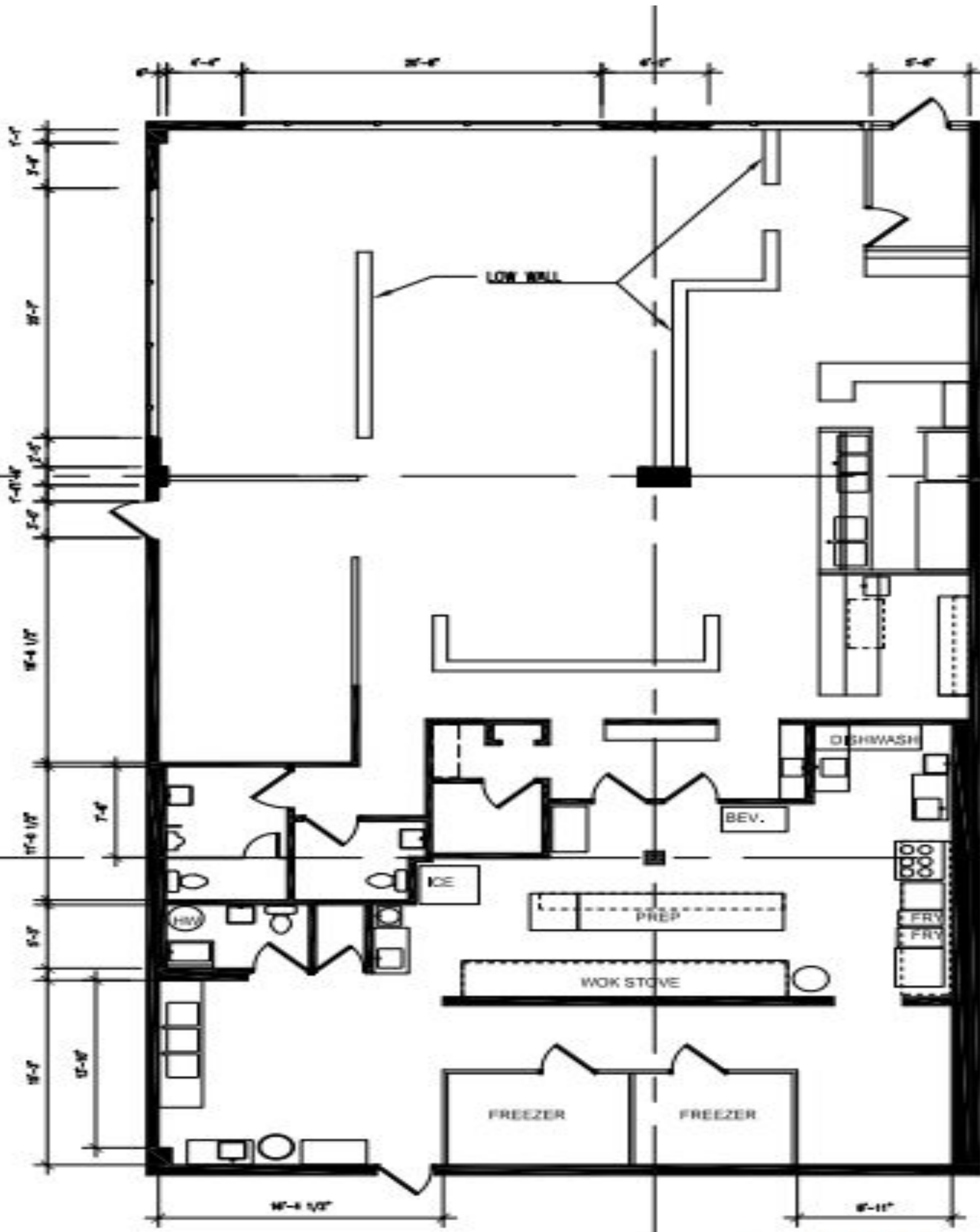
Fully Equipped, 4,182 SQ FT Restaurant Space



Vacancy Space Drawing

Key features:

- 4,182 sq ft
- Ample front entry space
- Designated customer and staff space
- Fully equipped kitchen
- 3 potential restrooms
- Potential outdoor space

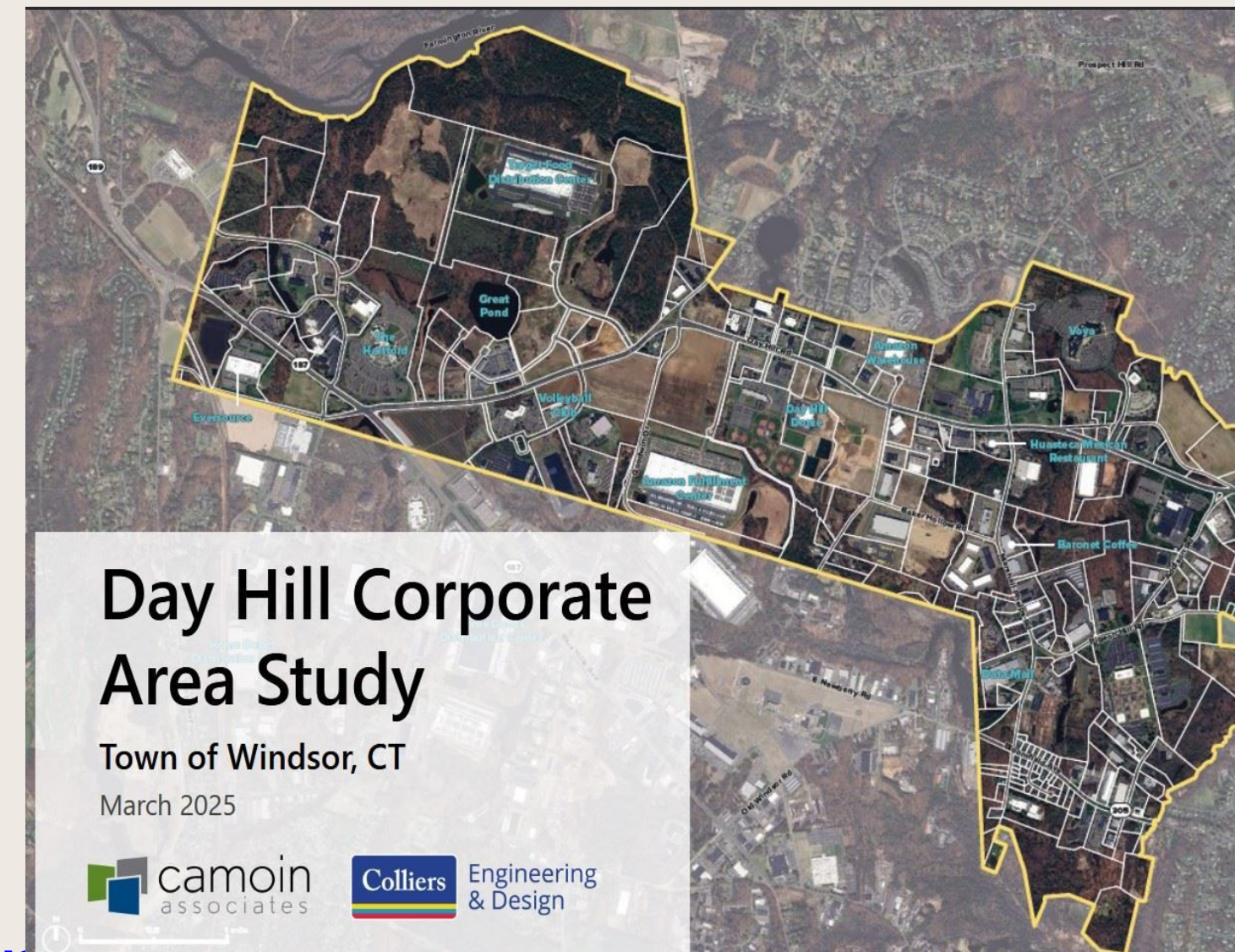


SCALE: 1/8" = 1'-0"

DAY HILL ROAD DEVELOPMENT

Day Hill Road corridor in Windsor, CT is one of the town's top economic development priorities: converting unused and outdated commercial spaces into luxury living spaces; adding residential & mixed-use redevelopments; investing in hospitality and community recreation

See the full plan here: [Town of Windsor Plan of Conservation and Development\(2025-2035\)](#)



DAY HILL ROAD DEVELOPMENT (Cont.)

- Currently 230 luxury apartment units completed at The Preserve at Great Pond on Day Hill Road
- Recently approved 300-unit, multi-family housing complex at 500 Day Hill Road across the street



TRAFFIC

- Average daily traffic nearly 20,000 vehicles per day
- Close proximity to I-91 (Connecticut DOT data)
- Holding steady post COVID



Leasing Info

- 
- Available at market terms
 - Tenant Improvement Allowance

Leasing through Sennott Property Management

Please call: Kristine Martin (860) 806-7462