

SUN CITY
CARDIAC
CENTER

Fully Built-Out Cardiac Cath Lab Available for Lease on Campus at Banner Boswell

10415 W THUNDERBIRD BLVD | SUN CITY, AZ 85351



OWNED BY

HEALTHCARE
REALTY

LEASING BY

km Kidder
Mathews

SUN CITY CARDIAC CENTER

10415 W THUNDERBIRD BLVD | SUN CITY, AZ 85351

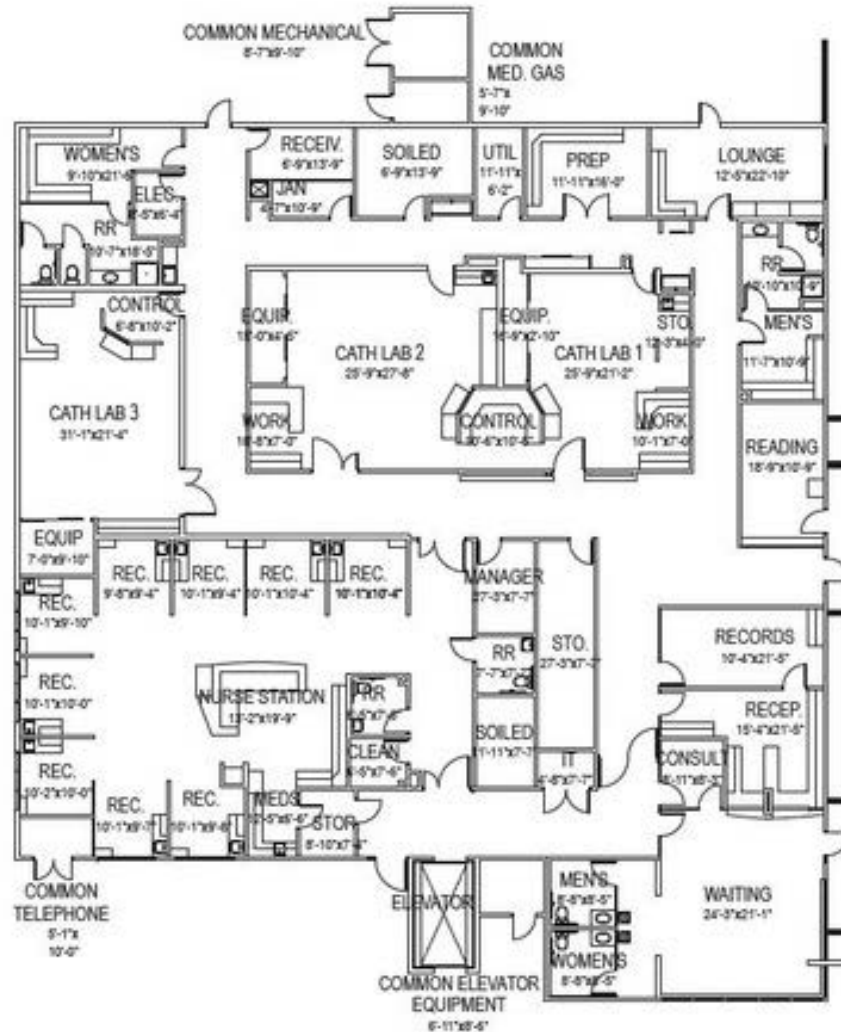
Floor 01

Suite 100

AS-BUILT

11,306 SF

AVAILABLE



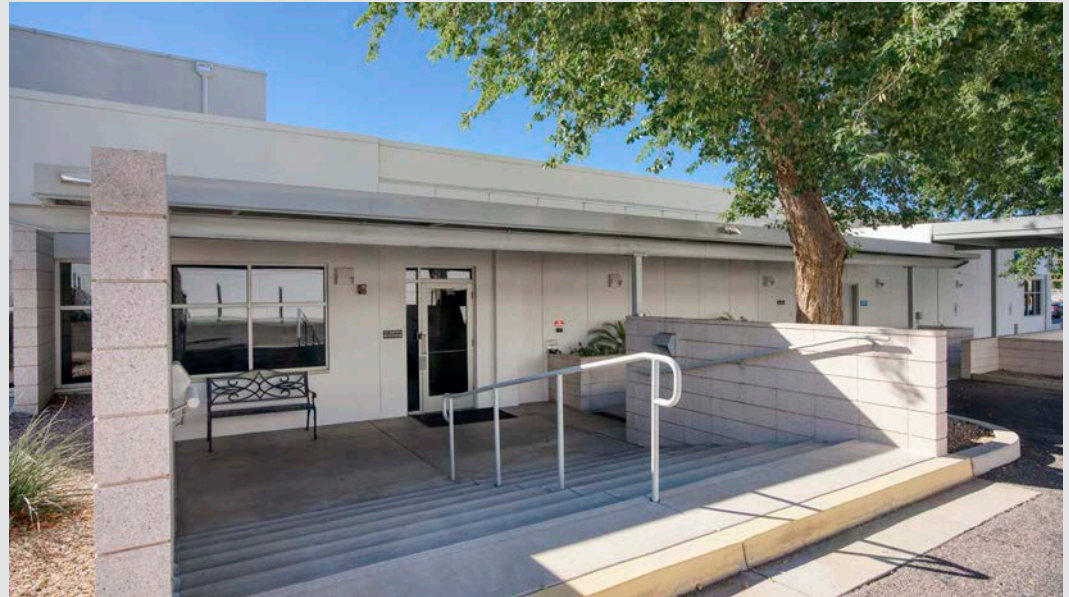
RACHAEL THOMPSON
Senior Vice President
602.513.5122
rachael.thompson@kidder.com

PERRY GABUZZI, CCIM
Senior Vice President
602.513.5116
perry.gabuzzi@kidder.com

SUN CITY CARDIAC CENTER

11,306 SF Fully Built Out Cardiac Cath Lab on Banner Boswell Campus Available for Lease

ADDRESS	10415 W Thunderbird Blvd., Sun City, AZ 85351
SIZE	11,306 SF
STORIES	1
PARKING	Abundunance of physician and patient parking with a 8.4/1,000 ratio





SUN CITY
CARDIAC
CENTER

BANNER BOSWELL MEDICAL CENTER

505 bed hospital nationally recognized for its expertise in cardiovascular preventative care and services

Currently undergoing construction to add a new patient tower and emergency room

Joint Comission Certified Primary Stroke Center

Located on Campus at Banner Boswell Medical Center

1 min

DRIVE TO US-60 ACCESS

2 min

WALK TO BANNER BOSWELL MEDICAL CAMPUS

5 min

DRIVE TO LOOP 101 ACCESS

6 min

DRIVE TO RETAIL AND DINING AMENITIES



SUN CITY
CARDIAC
CENTER



For additional leasing information, contact

RACHAEL THOMPSON

Senior Vice President

602.513.5122

rachael.thompson@kidder.com

PERRY GABUZZI, CCIM

Senior Vice President

602.513.5116

perry.gabuzzi@kidder.com

OWNED BY



**HEALTHCARE
REALTY**

LEASING BY



**Kidder
Mathews**

This information supplied herein is from sources we deem reliable. It is provided without any representation, warranty, or guarantee, expressed or implied as to its accuracy. Prospective Buyer or Tenant should conduct an independent investigation and verification of all matters deemed to be material, including, but not limited to, statements of income and expenses. Consult your attorney, accountant, or other professional advisor.