

For Sale/Lease

NAIDESCO

4548 S St Peters Pkwy
St. Peters, MO 63304



Property Highlights



For Sale/Lease
7,236 SF on 0.82 AC



**Industrial Office /
Warehouse Building**



**Building and
Monument Signage**



**Contact Broker
For Pricing**

For more information, please contact:



Meghan Donovan

d (314) 994 - 2320

c (314) 810 - 9213

mdonovan@naidesco.com

Owned & Managed by:



**ALLUVION
PARTNERS**

NAIDESCO

8112 Maryland Ave, Suite 300

St. Louis, MO 63105

(314) 994 - 4800

naidesco.com

Property Features

- 7,236 SF industrial building on 0.82 acres
- ±15% office finish
- Three drive-ins (including one oversized)
- Loading dock platform
- Heavy power: 200 amps, 3-phase
- 14' clear height
- Easy access and high visibility from Hwy 94 & Hwy 364

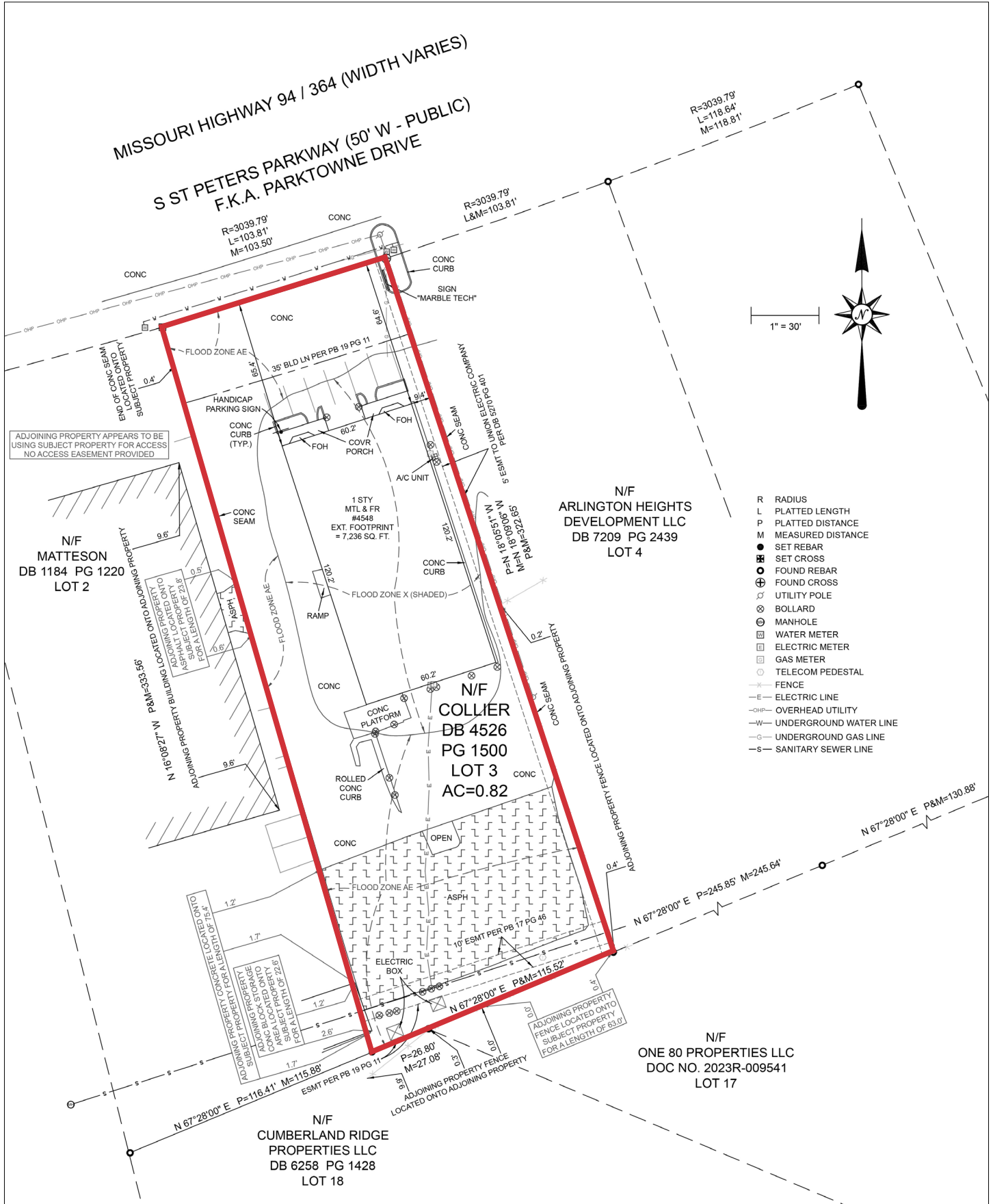
\$ Sale Price:
Contact Broker

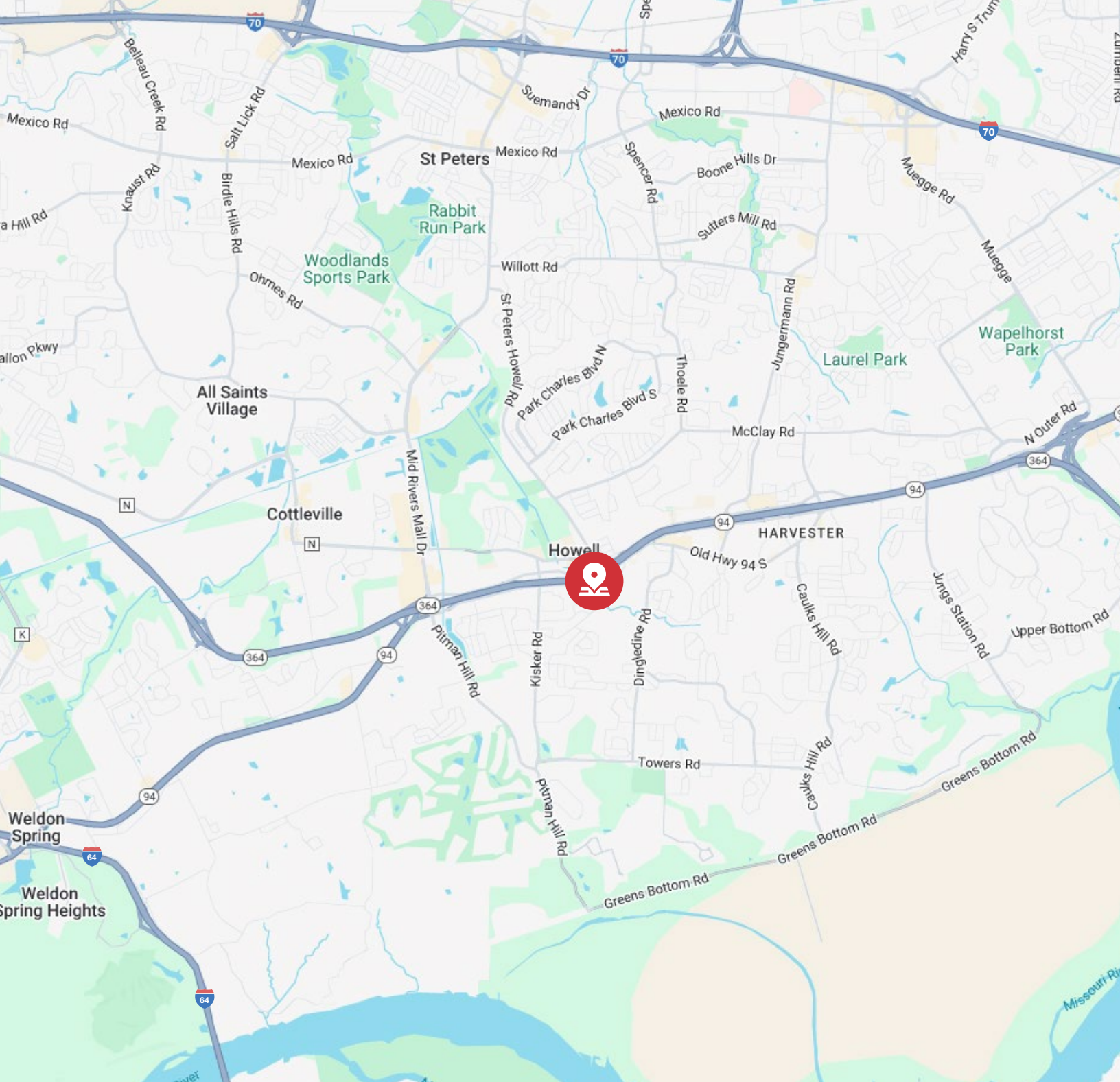
\$ Lease Rate:
\$12.00 / SF, NNN



Site Aerial







Meghan Donovan

d (314) 994 - 2320

c (314) 810 - 9213

[mdonovan@naidesco.com](mailto:m Donovan@naidesco.com)

NAIDESCO

8112 Maryland Ave, Suite 300

St. Louis, MO 63105

(314) 994 - 4800

naidesco.com

No warranty or representation, express or implied, is made as to the accuracy of the information contained herein, and the same is submitted subject to errors, omissions, changes in price, rental, or other conditions, prior sale, lease, or financing, or withdrawal without notice, and any special listing conditions imposed by our principals. No warranties or representations are made as to the condition of the property or any hazards contained therein, nor are any to be implied.