



FINEBERG & ASSOCIATES
 COMMERCIAL REAL ESTATE
 104 S Main Street Bentonville, AR 72712

ARKREALESTATE.COM



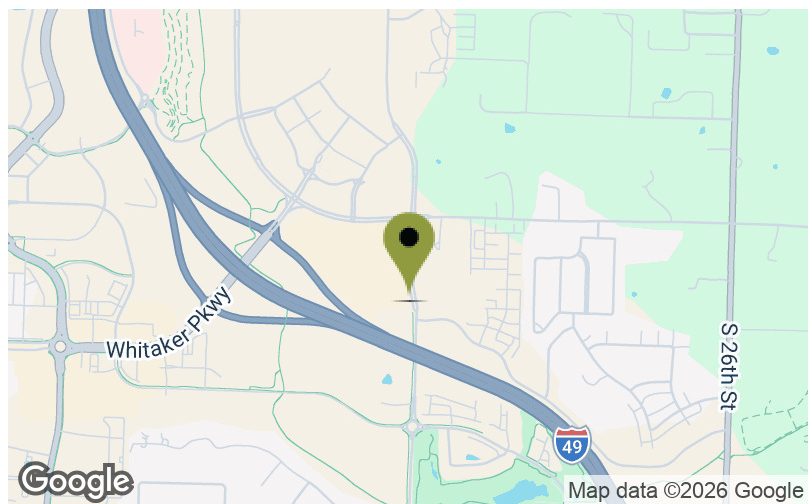
4303 Langmead Dr: 1,430



4301 Langmead Dr: 1,430



4310 Langmead Dr: 1,445



3 OCCUPIED RESIDENTIAL HOMES-ROGERS AR

Discover a rare investment opportunity in one of Northwest Arkansas' fastest-growing areas! This exclusive package includes three well-maintained residential homes located in Rogers, AR 72758. Each home features 3 bedrooms and 2 bathrooms with spacious floor plans ranging from 1,430 to 1,445 square feet. With all three properties fully developed and income-producing, this is an ideal portfolio addition for investors.

PROPERTY DETAILS

ADDRESS	SF	BED/ BATH	RENT INCOME	LEASE EXP
4303 Langmead	1,430	3/2	\$1,750	10.1.26
4301 Langmead	1,430	3/2	\$1,750	7.7.27
4310 Langmead	1,445	3/2	\$1,725	Vacant
TOTAL PRICE:	\$997,425			

STEVE FINEBERG
 (479)271-4161
 steve@arkrealestate.com



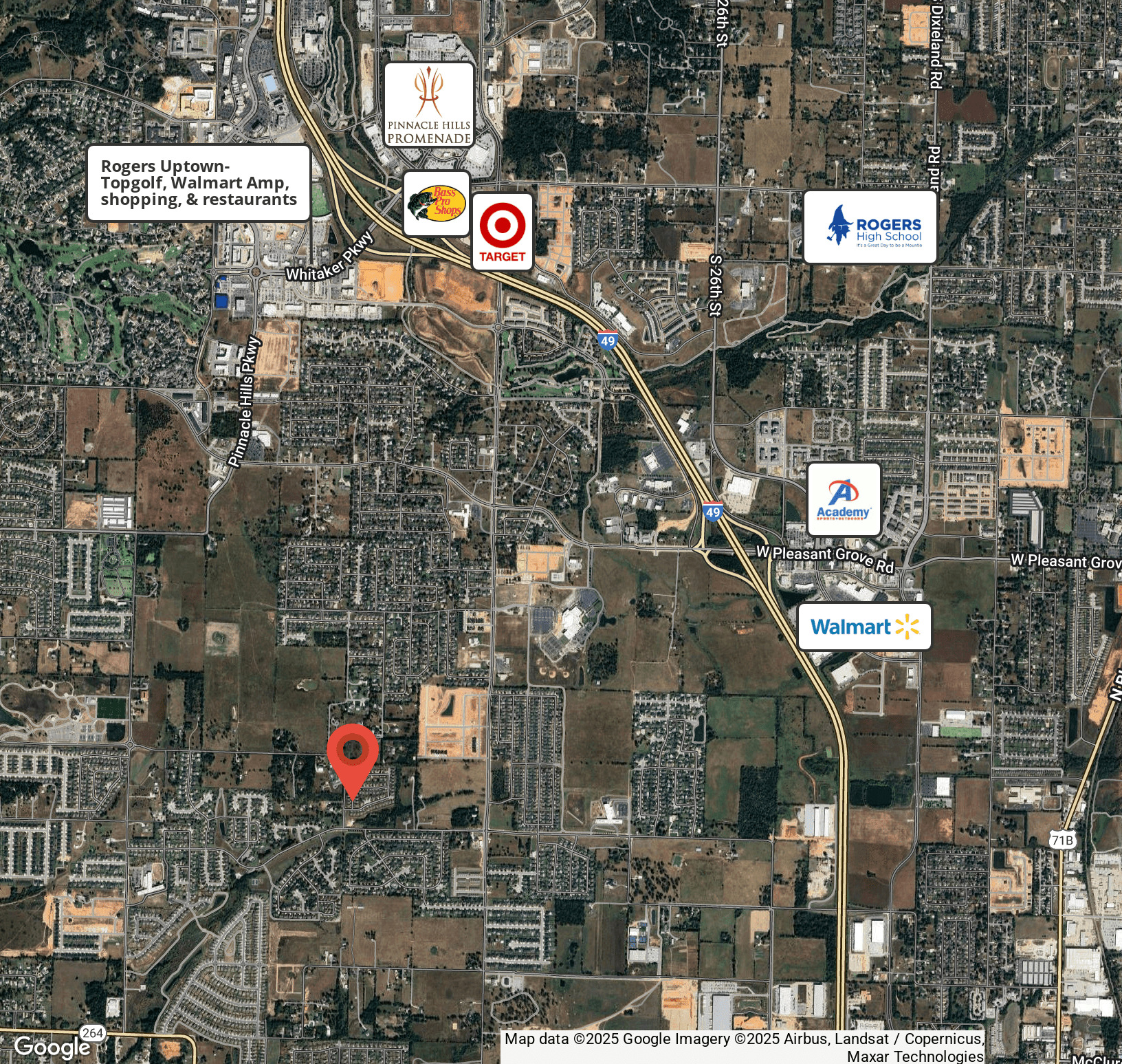


FINEBERG & ASSOCIATES

COMMERCIAL REAL ESTATE

104 S Main Street Bentonville, AR 72712

ARKREALESTATE.COM



Rogers Uptown-
Topgolf, Walmart Amp,
shopping, & restaurants



Google 264

Map data ©2025 Google Imagery ©2025 Airbus, Landsat / Copernicus, Maxar Technologies

STEVE FINEBERG
(479)271-4161
steve@arkrealestate.com



FOR MORE INFORMATION ON THIS PROPERTY OR TO SEE OUR OTHER PROPERTIES VISIT ARKREALESTATE.COM