



20/21 BUSINESS CENTER

**PRIME
INTERSTATE
LOCATION**

*HIGH VISIBILITY
OPPORTUNITIES
AVAILABLE*



**CAPITAL IMPROVEMENTS
RECENTLY COMPLETED**

COLUMBIA, SOUTH CAROLINA

FOR LEASE
FLEX/OFFICE SPACE



6904 N MAIN STREET

CENTRAL
LOCATION
EXCELLENT
ACCESSIBILITY
PROFESSIONALLY
MANAGED



100 NORTHEAST DR



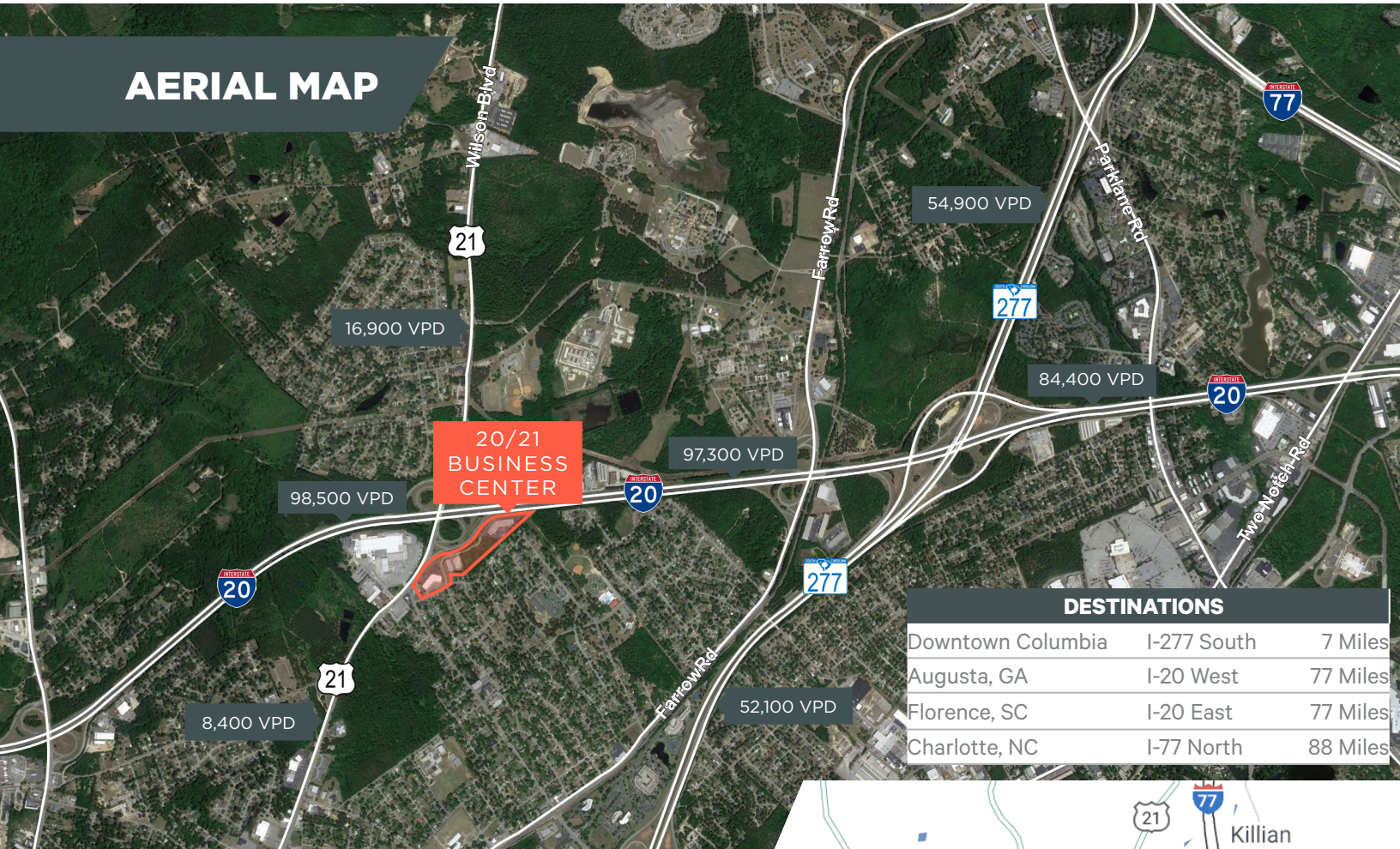
400 NORTHEAST DR

PRIME OPPORTUNITY

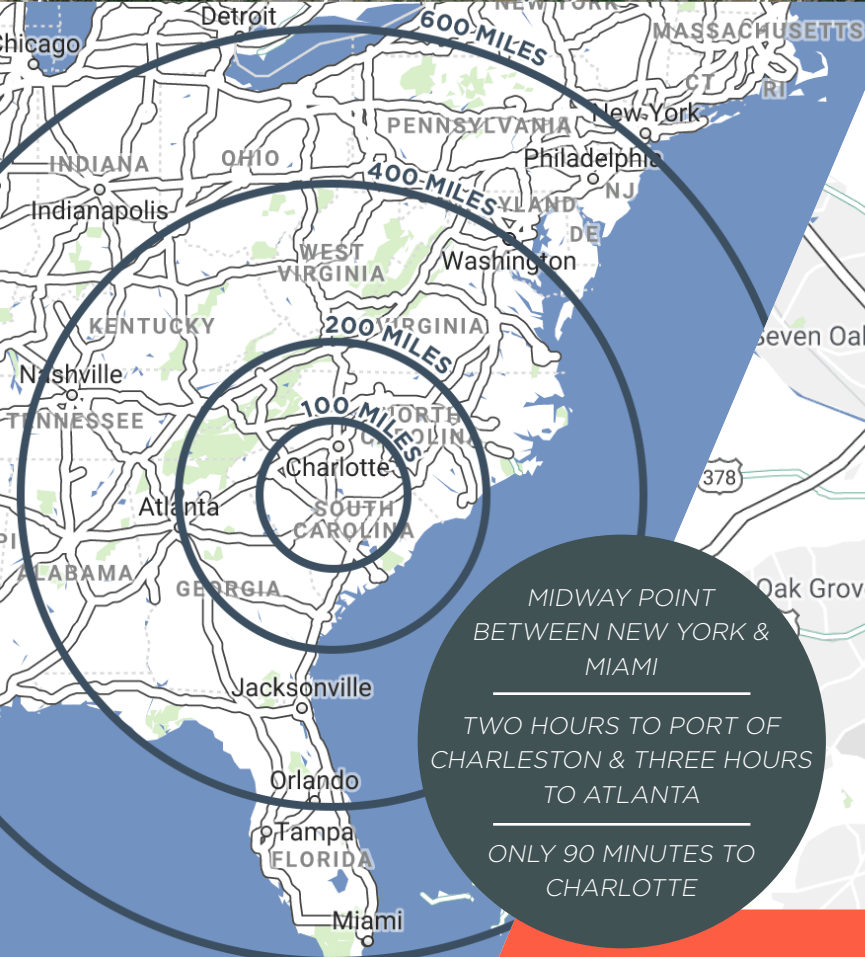
- Professional/Flex park environment
- Suites available ranging from \pm 2,450 SF to \pm 5,503 SF Flex space
- New exterior paint and updated standard signage
- Warehouse areas offer dock or drive-in doors and 12'+ clear heights
- Ideal central location with excellent interstate accessibility and visibility
- Ample on-site parking
- Signage opportunities
- Asking rate \$12.50- \$13.00 per rentable square foot, NNN

HIGHLY FLEXIBLE SPACES

AERIAL MAP



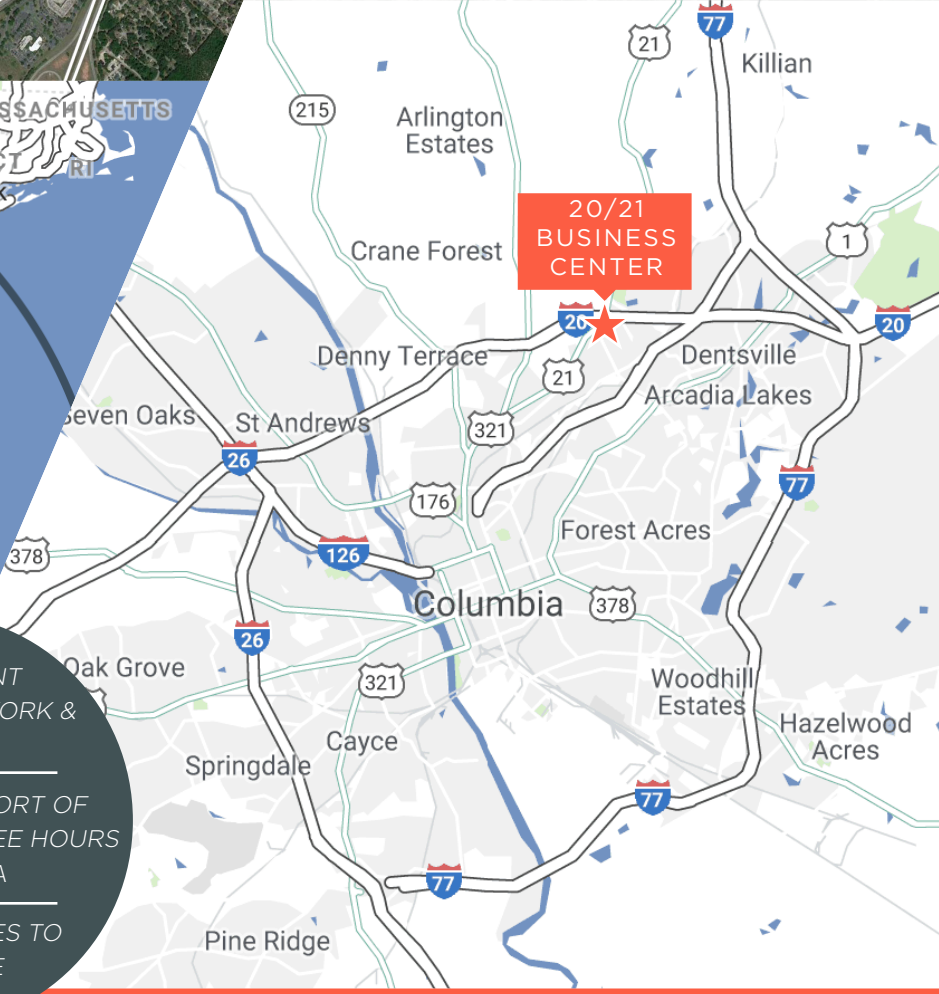
DESTINATIONS		
Downtown Columbia	I-277 South	7 Miles
Augusta, GA	I-20 West	77 Miles
Florence, SC	I-20 East	77 Miles
Charlotte, NC	I-77 North	88 Miles



MIDWAY POINT
BETWEEN NEW YORK &
MIAMI

TWO HOURS TO PORT OF
CHARLESTON & THREE HOURS
TO ATLANTA

ONLY 90 MINUTES TO
CHARLOTTE



20/21 BUSINESS CENTER

CONTACT US

Marie Dieckmann
Senior Associate

+1 803 744 5091
marie.dieckmann@cbre.com

Aaron Dupree, CCIM
First Vice President

+1 803 744 6859
aaron.dupree@cbre.com

www.cbre.com/columbia

1333 Main Street, Suite 210 | Columbia, SC 29201

CBRE

© 2025 CBRE, Inc. All rights reserved. This information has been obtained from sources believed reliable, but has not been verified for accuracy or completeness. You should conduct a careful, independent investigation of the property and verify all information. Any reliance on this information is solely at your own risk. CBRE and the CBRE logo are service marks of CBRE, Inc. All other marks displayed on this document are the property of their respective owners, and the use of such logos does not imply any affiliation with or endorsement of CBRE. Photos herein are the property of their respective owners. Use of these images without the express written consent of the owner is prohibited.