

FOR SALE

FREE STANDING RESTAURANT



3020 WEST MAIN ST | ALHAMBRA, CALIFORNIA

OFFERING SUMMARY

Sale Price:	\$1,650,000
Available SF:	Approximately 1,925 SF
Lot Size:	Approximately 7,748 SF
APN:	5292-019-044
Parking:	+/- 12 Spaces

PROPERTY HIGHLIGHTS

- Approximately 7,748 SF of Land
- CMU - Commercial Mixed Use zoning (City of Alhambra)
- Approximately 1,925 SF Freestanding Restaurant
- Month to Month Tenant
- Total Equipment Package Available with Tenant

DEMOGRAPHICS	1 MILE	3 MILES	5 MILES
Population	29,277	247,970	706,978
Avg HH Incomes	\$145, 791	\$148,387	\$135,827

Scott Wilcott Jr., CCIM

Senior Vice President
626.204.1500 Direct
swilcott@naicapital.com
CA DRE #01214447

Suzanne Hazel

Global Real Estate Advisor
626.429.8600 Direct
suzy.hazel@sothebys.realty
CA DRE #01806362

Sotheby's
INTERNATIONAL REALTY

NAI Capital
COMMERCIAL REAL ESTATE SERVICES. WORLDWIDE

FOR SALE FREE STANDING RESTAURANT

3020 WEST MAIN ST | ALHAMBRA, CALIFORNIA



3020 W Main Street in Alhambra presents a rare opportunity for an owner/user to acquire a freestanding $\pm 1,925$ SF second-generation restaurant on an approximately $\pm 7,748$ SF lot. The property includes approximately 12 on-site parking spaces—an increasingly scarce amenity in this high-demand corridor.

The building is currently occupied on a month-to-month basis, providing immediate flexibility for a buyer to occupy, reposition, or re-tenant the space. The existing operator does not hold a liquor license; however, the current tenant has indicated a willingness to sell the existing furniture, fixtures, and equipment (FF&E), offering a potential turnkey transition for a new concept.

The interior build-out includes a bar, booth and table seating, a small dance floor, and a commercial kitchen, creating a flexible layout suitable for a wide range of restaurant or hospitality uses. Ideal for an owner/operator seeking a manageable footprint with strong existing improvements in place.

The property offers excellent street visibility and signage, benefiting from steady commuter traffic with convenient access toward Downtown Los Angeles. The surrounding trade area is characterized by dense residential demographics, a strong dining culture, and consistent consumer demand — supporting long-term success for food and beverage operators.

www.naicapital.com

PROPERTY PHOTOS

Sotheby's
INTERNATIONAL REALTY

NAICapital
COMMERCIAL REAL ESTATE SERVICES, WORLDWIDE



Scott Wilcott Jr., CCIM

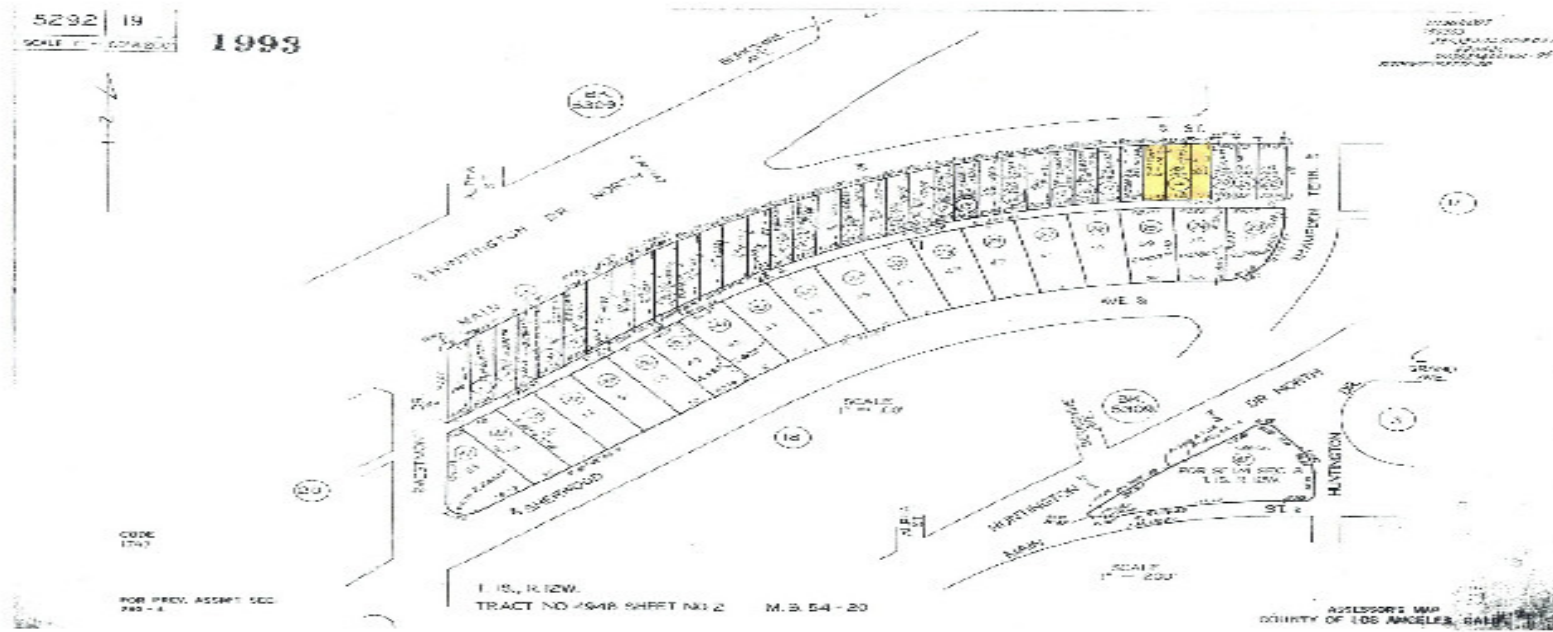
Senior Vice President
626.204.1500 Direct
swilcott@naicapital.com
CA DRE #01214447

Suzanne Hazel

Global Real Estate Advisor
626.429.8600 Direct
suzy.hazel@sothebys.realty
CA DRE #01806362

©NAI Capital Commercial, Inc. Content in this document may include AI generated or altered text, images and/or analysis. No warranty, express or implied, is made as to the accuracy of the information contained herein. This information is submitted subject to errors, omissions, change of price, rental or other conditions, withdrawal without notice, and is subject to any special listing conditions imposed by our principals. Cooperating brokers, buyers, tenants and other parties who receive this document should not rely on it, but should use it as a starting point of analysis, and should independently confirm the accuracy of the information contained herein through a due diligence review of the books, records, files and documents that constitute reliable sources of the information described herein. Unedited images viewable at naicapital.com | Cal DRE Lic #02130474

PARCEL MAP



Confidential. Paraphrase and/or use based on the work of the consultant. Exchange the work is subject to the terms and conditions of the consultant's agreement. NAI Capital Commercial, Inc. is a registered broker-dealer in California. License No. 01140225.

Scott Wilcott Jr., CCIM

Senior Vice President
 626.204.1500 Direct
 swilcott@naicapital.com
 CA DRE #01214447

Suzanne Hazel

Global Real Estate Advisor
 626.429.8600 Direct
 suzy.hazel@sothebys.realty
 CA DRE #01806362

©NAI Capital Commercial, Inc. Content in this document may include AI generated or altered text, images and/or analysis. No warranty, express or implied, is made as to the accuracy of the information contained herein. This information is submitted subject to errors, omissions, change of price, rental or other conditions, withdrawal without notice, and is subject to any special listing conditions imposed by our principals. Cooperating brokers, buyers, tenants and other parties who receive this document should not rely on it, but should use it as a starting point of analysis, and should independently confirm the accuracy of the information contained herein through a due diligence review of the books, records, files and documents that constitute reliable sources of the information described herein. Unedited images viewable at naicapital.com | Cal DRE Lic #02130474

AERIAL MAP

Sotheby's
INTERNATIONAL REALTY

NAICapital
COMMERCIAL REAL ESTATE SERVICES, WORLDWIDE



Scott Wilcott Jr., CCIM

Senior Vice President
626.204.1500 Direct
swilcott@naicapital.com
CA DRE #01214447

Suzanne Hazel

Global Real Estate Advisor
626.429.8600 Direct
suzy.hazel@sothebys.realty
CA DRE #01806362

©NAI Capital Commercial, Inc. Content in this document may include AI generated or altered text, images and/or analysis. No warranty, express or implied, is made as to the accuracy of the information contained herein. This information is submitted subject to errors, omissions, change of price, rental or other conditions, withdrawal without notice, and is subject to any special listing conditions imposed by our principals. Cooperating brokers, buyers, tenants and other parties who receive this document should not rely on it, but should use it as a starting point of analysis, and should independently confirm the accuracy of the information contained herein through a due diligence review of the books, records, files and documents that constitute reliable sources of the information described herein. Unedited images viewable at naicapital.com | Cal DRE Lic #02130474.