



# FOR SALE

## 227-229 VALLEJO STREET

DENVER, COLORADO 80223

### PROPERTY OVERVIEW

LIST PRICE:	\$2,500,000
CAP RATE:	6.15%
BUILDING TYPE:	OFFICE/WAREHOUSE
BUILDING SIZE:	12,832 SF
LOT SIZE:	0.20 AC/9,000 SF
ZONING:	I-A
LOADING:	DOUBLE DOOR (DRIVE-IN POSSIBLE)
OCCUPANCY:	100%
LEASE TYPE:	SINGLE TENANT NNN
YOC:	1969
PROPERTY TAXES:	\$108,052.89 (2025)
POWER:	600A/120-280V/3PH (TBV)
PACE FINANCING:	TO BE PAID OFF AT CLOSING

### BROKER CONTACTS

**RC MYLES, CCIM, SIOR**  
Principal, Senior Leadership  
T: 303.947.7850  
RCMyles@PinnacleREA.com

**CRAIG MYLES, SIOR**  
Vice President  
T: 303.570.9641  
CMyles@PinnacleREA.com

**JOE OWSTON**  
Associate Advisor  
T: 720.780.5829  
JOwston@PinnacleREA.com

**KIANNA STARIN**  
Associate Advisor  
T: 720.638.5417  
KStarin@PinnacleREA.com

### INVESTMENT HIGHLIGHTS



100% LEASED  
INVESTMENT  
OPPORTUNITY



CENTRALLY LOCATED WITH  
QUICK ACCESS TO I-25 AND  
6<sup>TH</sup> AVE



HIGH QUALITY  
OFFICE FINISHES



ON-SITE  
PARKING



SOLAR PANEL  
UPGRADES



NEAR THE NEW BRONCOS  
STADIUM DEVELOPMENT  
(BURNHAM YARDS)



CONDITIONED  
WAREHOUSE AREA

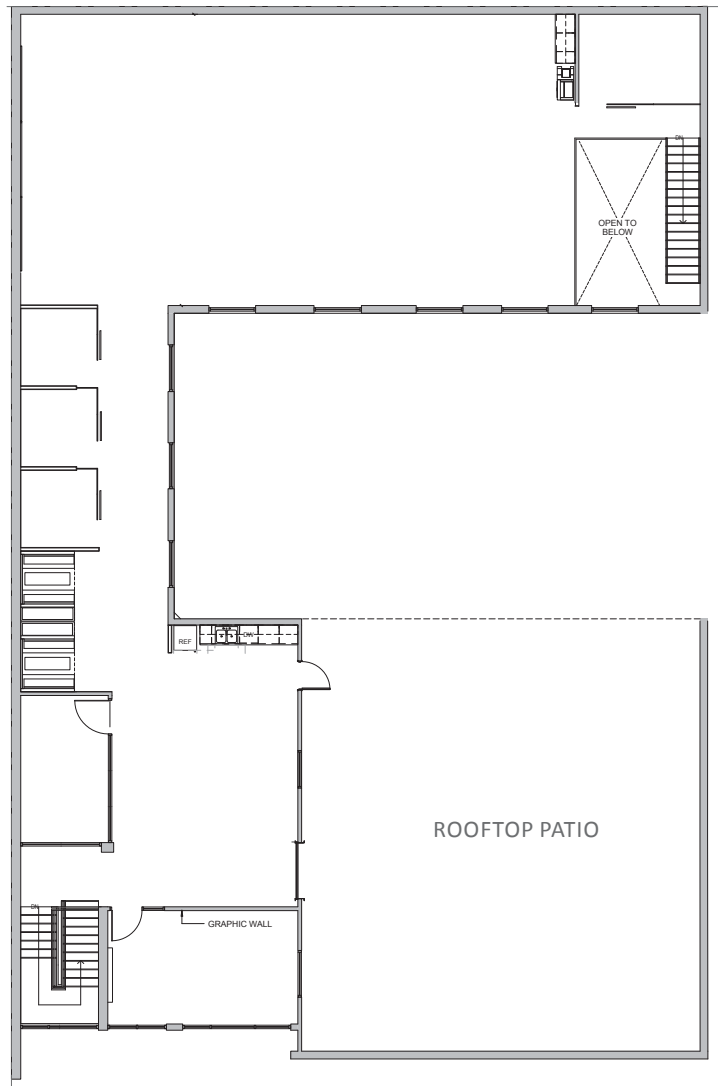
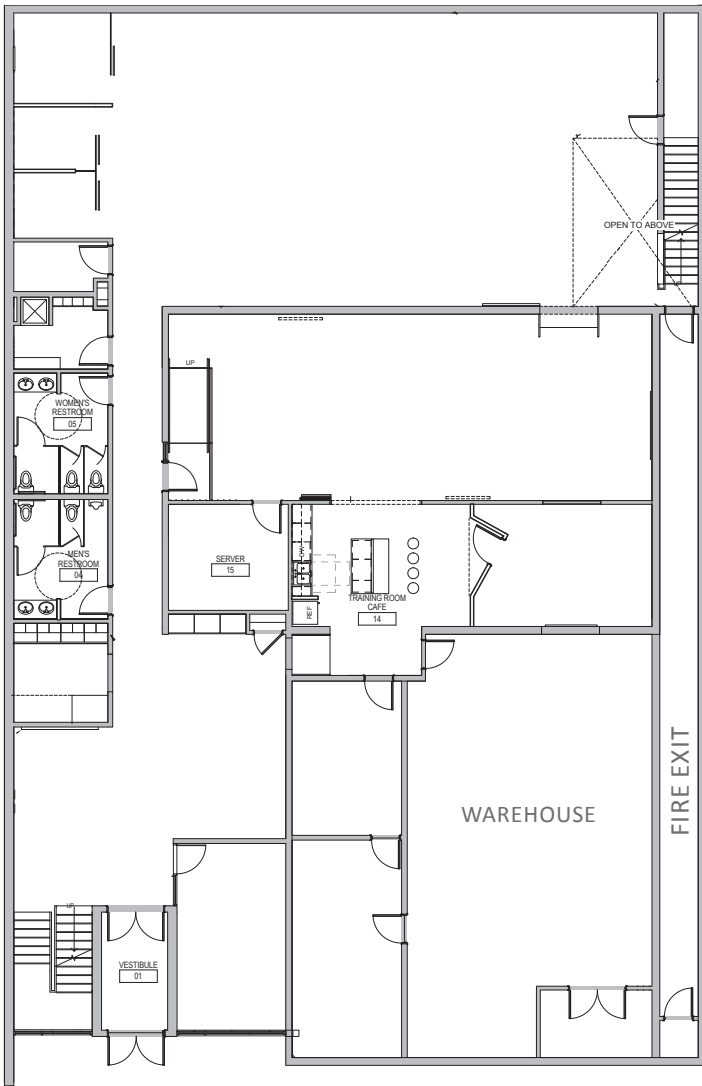


# EXECUTIVE SUMMARY

227-229 Vallejo St is a single tenant, 100% leased, investment opportunity in Central Denver. This location provides easy access to the entire Denver Metro area via I-25 and 6th Avenue and is located near the new Denver Bronco's Stadium development site at Burnham Yards. The property features on-site parking, high quality office finishes, numerous upgrades including a solar array and substantial power. This hands off NNN leased investment opportunity provides an attractive return with a reliable tenant in a strong industry sector.



# FLOOR PLANS



1 LEVEL 1 - FURNITURE PLAN



1 LEVEL 2 - FURNITURE PLAN





## BROKER CONTACTS

**RC MYLES, CCIM, SIOR**  
Principal, Senior Leadership  
T: 303.947.7850  
RCMyles@PinnacleREA.com

**JOE OWSTON**  
Associate Advisor  
T: 720.780.5829  
JOWston@PinnacleREA.com

**CRAIG MYLES, SIOR**  
Vice President  
T: 303.570.9641  
CMyles@PinnacleREA.com

**KIANNA STARIN**  
Associate Advisor  
T: 720.638.5417  
KStarin@PinnacleREA.com

One Broadway Suite A300  
Denver, CO 80203  
T: 303.962.9555  
www.PinnacleREA.com

PINNACLE REA MAKES NO GUARANTEE, WARRANTY OR REPRESENTATION ABOUT THE COMPLETENESS OR ACCURACY OF THE INFORMATION SET FORTH IN THIS OFFERING MEMORANDUM