

960 WOODLAND DRIVE
SALINE, MICHIGAN

INDUSTRIAL FOR LEASE
12,400 – 58,651 Square Feet



**SIGNATURE
ASSOCIATES**
KNOW SIGNATURE | KNOW RESULTS



PROPERTY FEATURES

- 12,400 – 58,651 square feet available
- 8,447 square feet office
- 12' clear height
- (2) 10' x 12' grade level doors, (5) truckwells
- 1500 amps, 480 volts power
- 50+ parking spaces
- Great warehousing or distribution building
- 8,000 square feet of lab space that can be converted to warehouse
- Gross rate includes real estate tax, building insurance, CAM and utilities
- Lease Rate: \$9.75/sq. ft. Gross



For more information, please contact:

JOE PLASKEY
(248) 948 0110
jplaskey@signatureassociates.com

JOE HAMWAY
(248) 948 0113
jhamway@signatureassociates.com

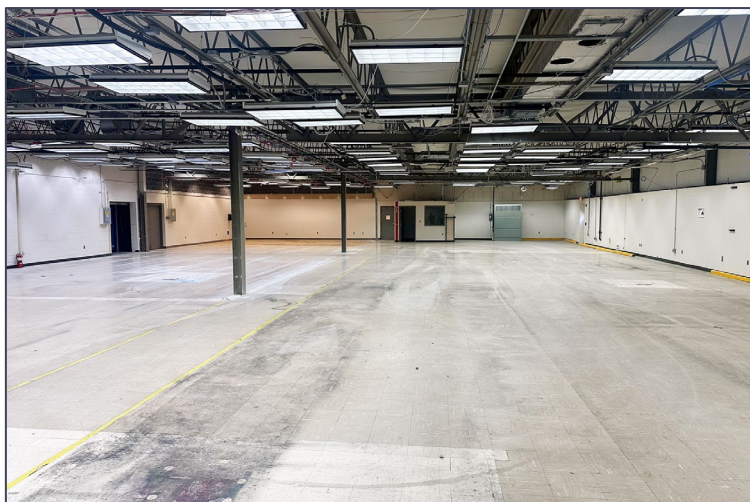
SIGNATURE ASSOCIATES
One Towne Square, Suite 1200
Southfield, MI 48076
www.signatureassociates.com

960 Woodland Drive – Saline, Michigan

Industrial For Lease

12,400 - 58,651
Square Feet
AVAILABLE

Interior Photos



For more information, please contact:

JOE PLASKEY
(248) 948 0110
jplaskey@signatureassociates.com

JOE HAMWAY
(248) 948 0113
jhamway@signatureassociates.com

SIGNATURE ASSOCIATES
One Towne Square, Suite 1200
Southfield, MI 48076
www.signatureassociates.com

960 Woodland Drive – Saline, Michigan

Industrial For Lease

12,400 - 58,651
Square Feet
AVAILABLE

Additional Photos



For more information, please contact:

JOE PLASKEY
(248) 948 0110
jplaskey@signatureassociates.com

JOE HAMWAY
(248) 948 0113
jhamway@signatureassociates.com

SIGNATURE ASSOCIATES
One Towne Square, Suite 1200
Southfield, MI 48076
www.signatureassociates.com

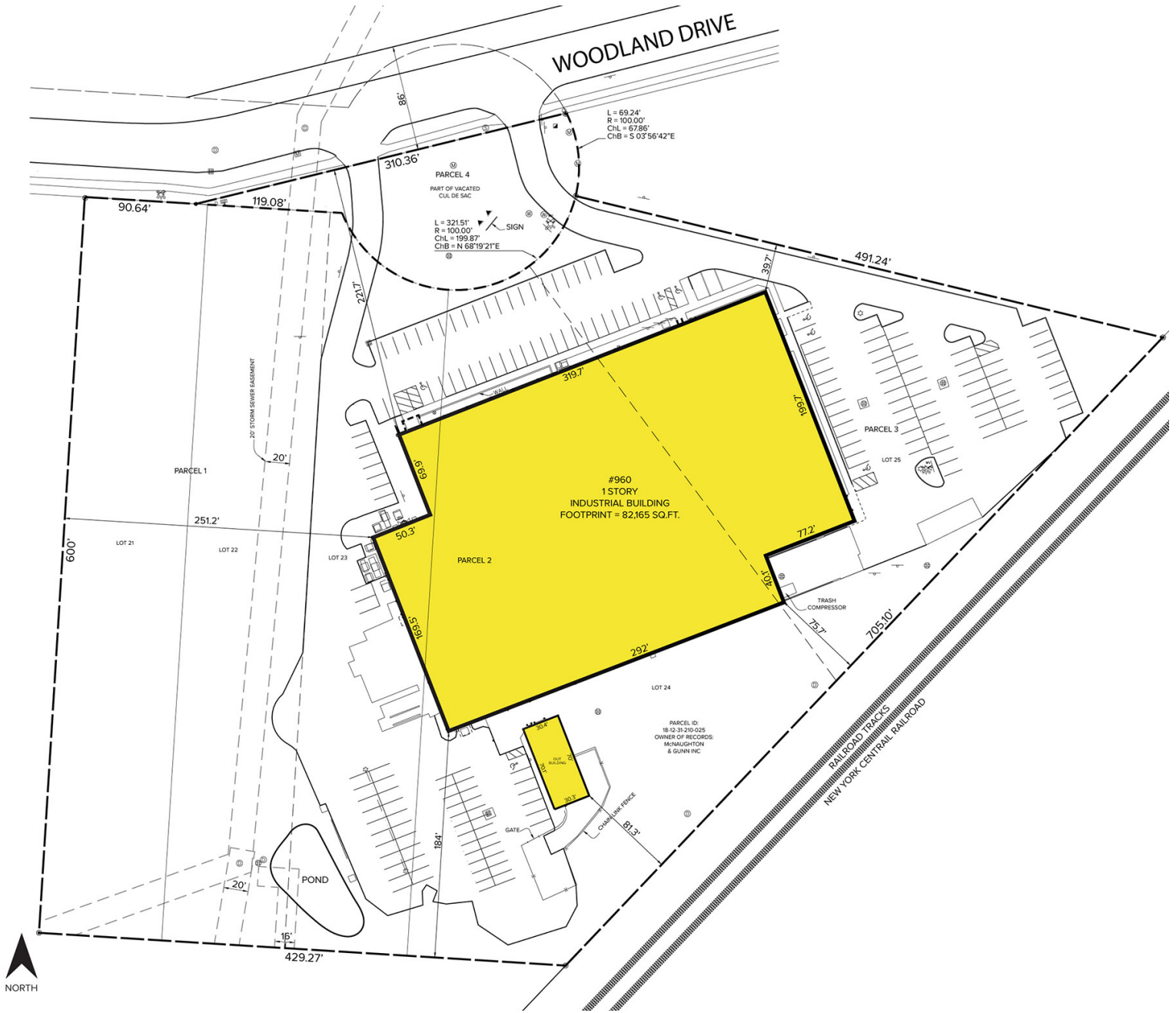
Information is subject to verification and no liability for errors or omissions is assumed. Price is subject to change and listing withdrawal.

960 Woodland Drive – Saline, Michigan

Industrial For Lease

12,400 - 58,651
Square Feet
AVAILABLE

Site Plan



For more information, please contact:

JOE PLASKEY
(248) 948 0110
jplaskey@signatureassociates.com

JOE HAMWAY
(248) 948 0113
jhamway@signatureassociates.com

SIGNATURE ASSOCIATES
One Towne Square, Suite 1200
Southfield, MI 48076
www.signatureassociates.com

960 Woodland Drive – Saline, Michigan

Industrial For Lease

12,400 - 58,651
Square Feet
AVAILABLE

Floor Plan



For more information, please contact:

JOE PLASKEY
(248) 948 0110
jplaskey@signatureassociates.com

JOE HAMWAY
(248) 948 0113
jhamway@signatureassociates.com

SIGNATURE ASSOCIATES
One Towne Square, Suite 1200
Southfield, MI 48076
www.signatureassociates.com

960 Woodland Drive – Saline, Michigan

Industrial For Lease

12,400 - 58,651
Square Feet
AVAILABLE

Aerial



For more information, please contact:

JOE PLASKEY
(248) 948 0110
jplaskey@signatureassociates.com

JOE HAMWAY
(248) 948 0113
jhamway@signatureassociates.com

SIGNATURE ASSOCIATES
One Towne Square, Suite 1200
Southfield, MI 48076
www.signatureassociates.com

Information is subject to verification and no liability for errors or omissions is assumed. Price is subject to change and listing withdrawal.