



FOR LEASE

Park Fletcher Building 13

5545 W Raymond St
Indianapolis, IN 46241



PROPERTY HIGHLIGHTS

- Clean flex space
- Easy interstate access
- Numerous amenities nearby
- Ample parking for employees and guests
- 7 miles from Indianapolis International Airport

Park Fletcher Building 13

5545 W Raymond St Indianapolis, IN 46241

FOR LEASE

CLEAN FLEX SPACE AVAILABLE

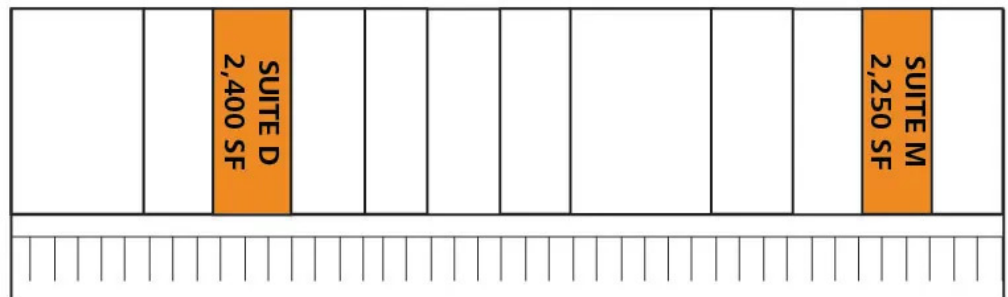


OFFERING SUMMARY

| | |
|----------------|------------------|
| Lease Rate: | Call for rates |
| Lease Type: | NNN |
| Building Size: | 32,040 SF |
| Available SF: | 2,250 - 2,400 SF |
| Year Built: | 1975 |
| Zoning: | I-3-S |
| 2026 OPEX: | \$3.40 |
| Clear Height: | 14' |
| Market: | Park Fletcher |

PROPERTY OVERVIEW

Flex spaces in this location at Park Fletcher are appropriate for a variety of businesses. The suites have built out office space along with drive in doors to fit your needs. Call today for more information and to schedule a private tour!



Liz DeKoninck | 765.516.4709 | liz@halakar.com

Colton Snodgrass, CCIM | 317.796.7377 | csnodgrass@halakar.com



www.Halakar.com

Indianapolis:
Centrally located with
award-winning infrastructure
for maximum logistical
benefit

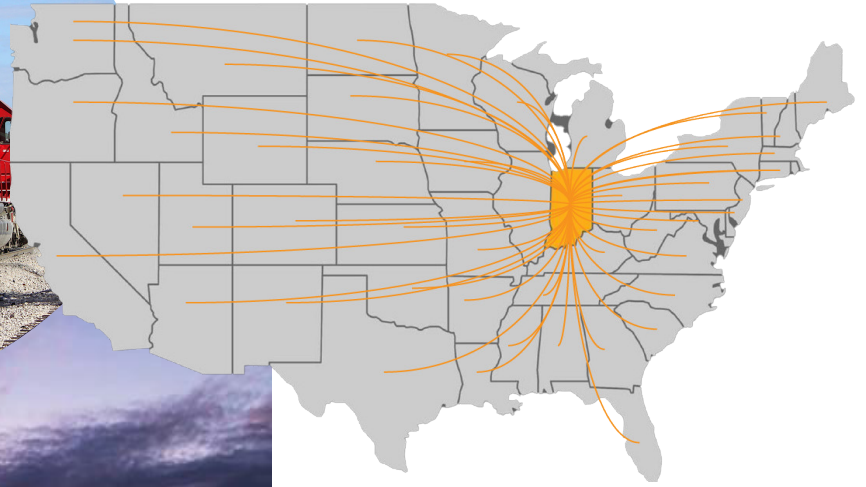


World's 2nd largest Fed Ex Air Hub

**Indiana is 1st in rail
tons of primary metals**



**Indiana is 1st in Shortest Distance to the
Median Center of the Entire US Population**



Indianapolis International Airport voted Best Airport
in North America 12 years in a row



Indiana ranks 1st in truck trailer production
and pass-through highways with four major
intersecting interstates

Indianapolis and the State of Indiana

- One of the largest export states in the nation
- 1st for cost of doing business in area development
- 2nd for best state to start a business
- \$650 billion in goods moves through Indiana annually
- With rail lines throughout America's steel belt and agricultural heartland, Indiana ranks highly in freight and class I railroads
- Indiana's Burns Harbor, Jeffersonville, and Mount Vernon ports provide access to Lake Michigan, the Ohio River, the Atlantic Ocean, and the Gulf of Mexico, as well as international access to Europe, the Middle East, Asia and South America



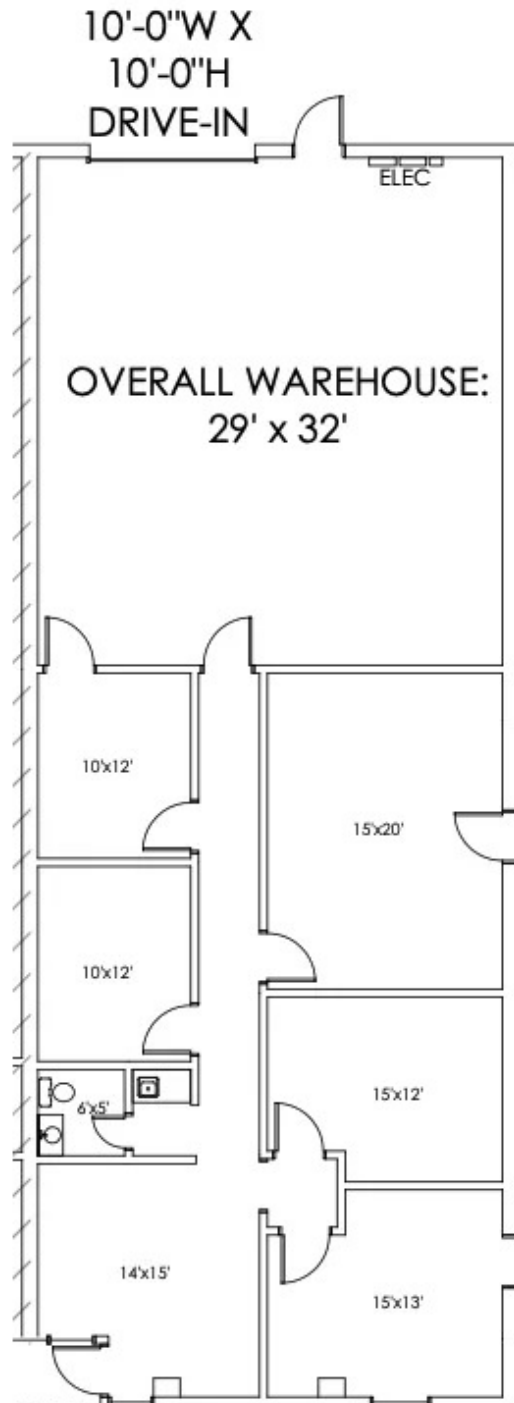
Park Fletcher Building 13

5545 W Raymond St Indianapolis, IN 46241

FOR LEASE

Individual Spaces

| SUITE | DATE AVAILABLE | AVAILABLE SF | OFFICE SF | DOCKS | DRIVE-INS | OPEX | CLEAR HEIGHT |
|------------------------|----------------|--------------|-----------|-------|-----------|--------|--------------|
| 5545 W Raymond Suite D | Immediately | 2,400 SF | 1,305 | - | 1 | \$3.40 | 14' |



Liz DeKoninck | 765.516.4709 | liz@halakar.com

Colton Snodgrass, CCIM | 317.796.7377 | csnodgrass@halakar.com



www.Halakar.com

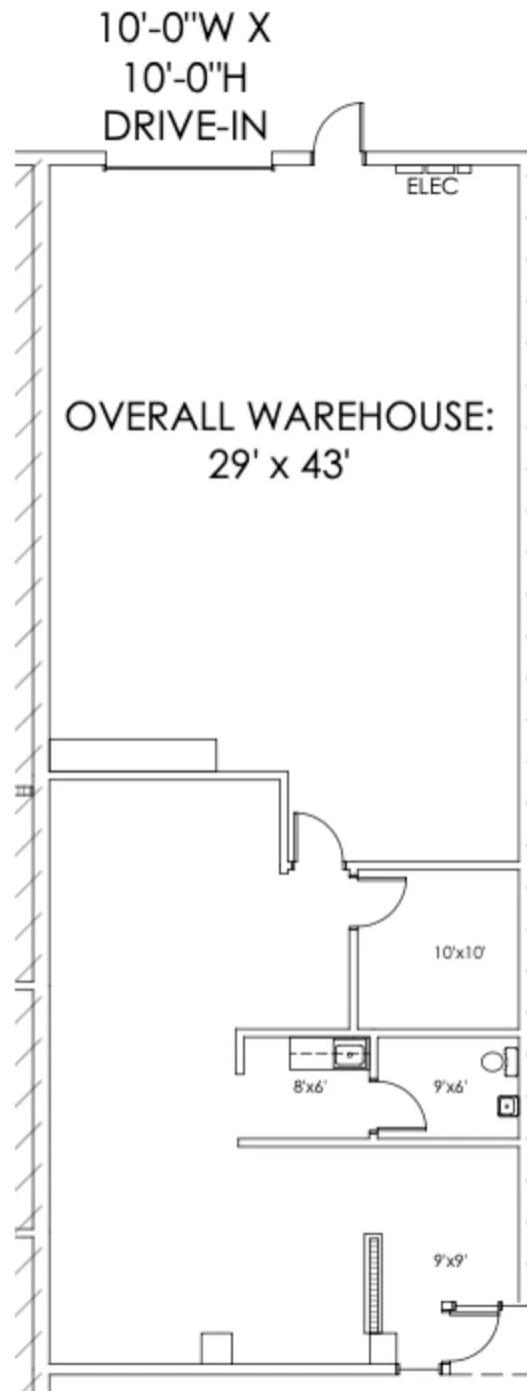
Park Fletcher Building 13

5545 W Raymond St Indianapolis, IN 46241

FOR LEASE

Individual Spaces

| SUITE | DATE AVAILABLE | AVAILABLE SF | OFFICE SF | DOCKS | DRIVE-INS | OPEX | CLEAR HEIGHT |
|------------------------|----------------|--------------|-----------|-------|-----------|--------|--------------|
| 5545 W Raymond Suite M | 2026-08-01 | 2,250 SF | 1,002 | - | 1 | \$3.40 | 14' |



Liz DeKoninck | 765.516.4709 | liz@halakar.com

Colton Snodgrass, CCIM | 317.796.7377 | csnodgrass@halakar.com



www.Halakar.com