

FOR LEASE

Fleetwood Office Complex

Unit 102, 9128 152 Street, Surrey, BC



Come see this very efficient 1,155 sq. ft. office space with 4 offices, reception, kitchen and server/storage room in a well managed office building near the 152nd Street Skytrain station that is coming.



DIRECTOR OF REAL ESTATE
Leslie Koole



PROPERTY MANAGER & LEASING AGENT
Hertha Muller

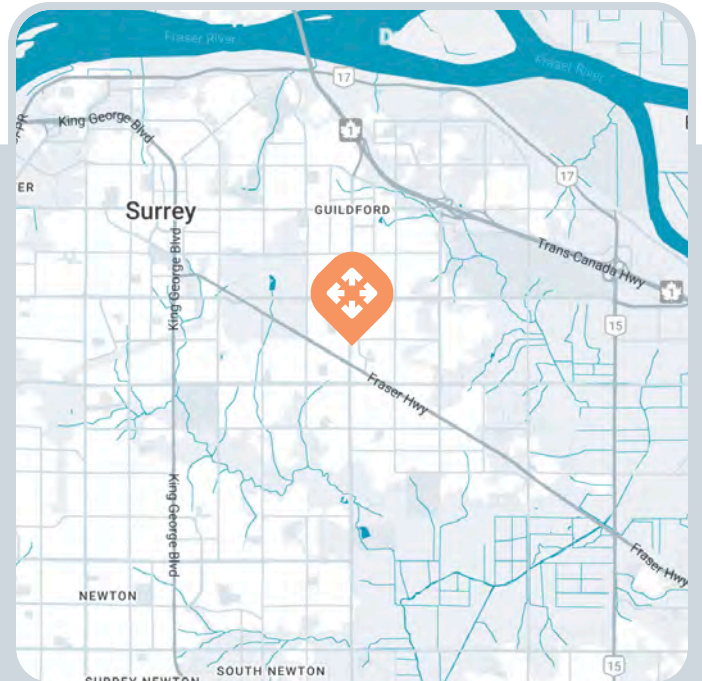
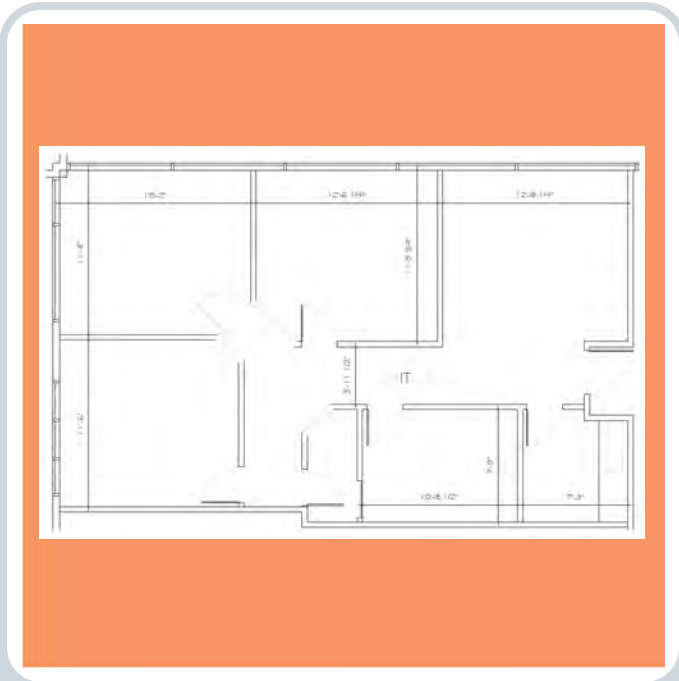


604.533.1138
leasing@benchmark-group.com

Contact our leasing team and let's get you the commercial property experience you deserve.

Fleetwood Office Complex

Unit 102, 9128 152 Street, Surrey, BC



Unit Size

1,155 sq. ft.

Amenities

- Fronts 152nd Street
- Steel frame
- 2 storey office
- Common washrooms
- Common garbage
- Site security
- Ample on-site parking
- Excellent property management service by Landlord

Zoning

C8 – Community Commercial

Location

Near the cross roads of 152nd and Fraser Highway, this two storey, prominent office building has great street exposure and many amenities close by. 152nd Street Skytrain station will be steps away.

TAKE YOUR PLACE OF BUSINESS TO THE NEXT LEVEL

Contact our leasing team and let's get you the commercial property experience you deserve.

Lease Rates

Office - \$23.00 psf

Operating Expenses - \$14.58 (2025) psf + 5% PM Fee

604.533.1138

leasing@benchmark-group.com