

# 712 W Peachtree

712 W Peachtree Street, Atlanta, GA

Office For Sublease

23,418 - 164,399 SF  
Available Immediately



## Lincoln

**Alex Port**  
404.931.9180  
aport@lpc.com

**Bo Jackson**  
770.633.7006  
bjackson@lpc.com

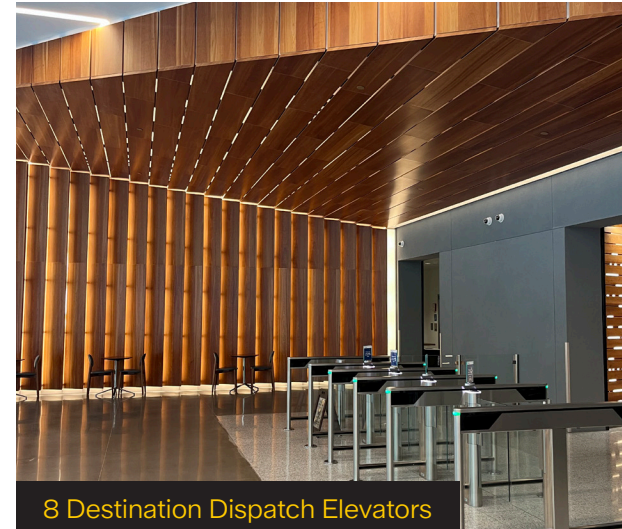
3340 Peachtree Rd NE  
Suite 2550  
Atlanta, GA 30326  
[www.lpc.com](http://www.lpc.com)

Full Floor Opportunity or Larger



7 Contiguous Floors  
1st Generation Space

15th Floor	23,588 SF
14th Floor	23,497 SF
13th Floor	23,497 SF
12th Floor	23,497 SF
11th Floor	23,451 SF
10th Floor	23,451 SF
9th Floor	23,418 SF



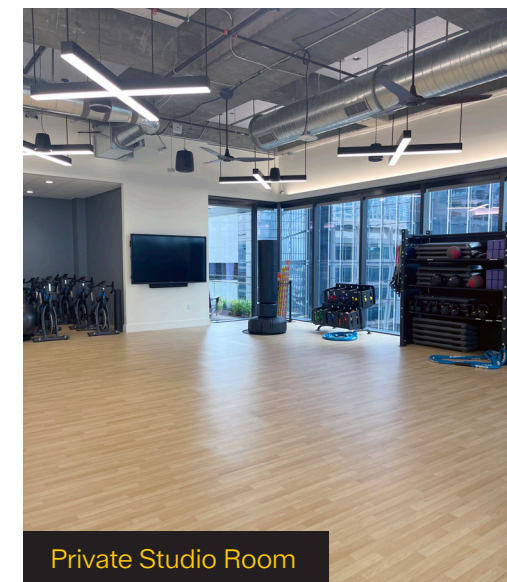
8 Destination Dispatch Elevators



100-Person Conferencing w/ Video Conferencing Capabilities, Flexible Space Configurations & Catering Kitchen



Exos High-end Fitness Center



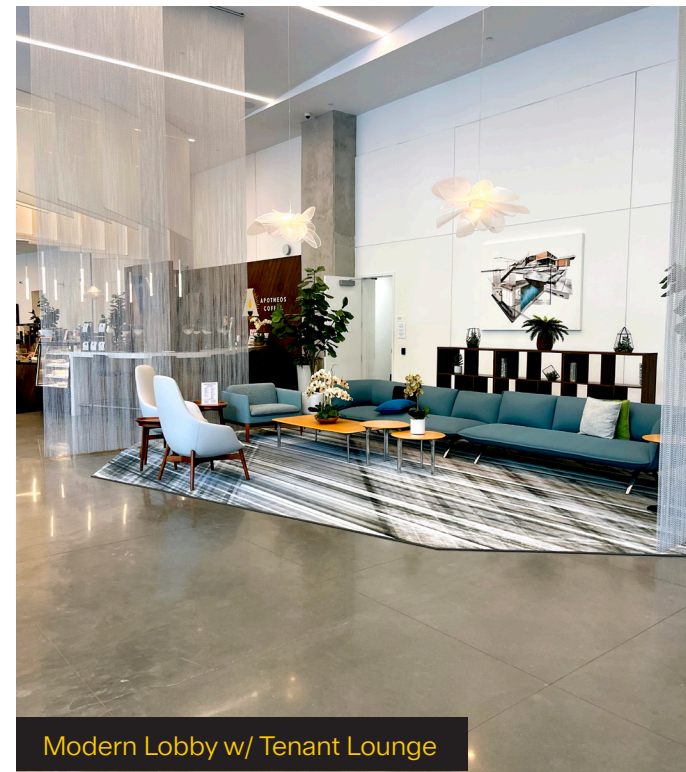
Private Studio Room



Locker rooms w/ towel service



Apotheos Operated Coffee Shop



Modern Lobby w/ Tenant Lounge

# 712 W Peachtree

712 W Peachtree Street, Atlanta, GA

Full Floor Opportunity or Larger

## Sublease Specs

Available SF:	164,399 SF
Full Floors:	9th - 15th
Building Size:	310,000 SF
Rental Rate:	Negotiable
Term:	Negotiable
Date Available:	Immediately
Allowance:	Negotiable



## Space Overview

Highly efficient 23,000 square foot floor plate

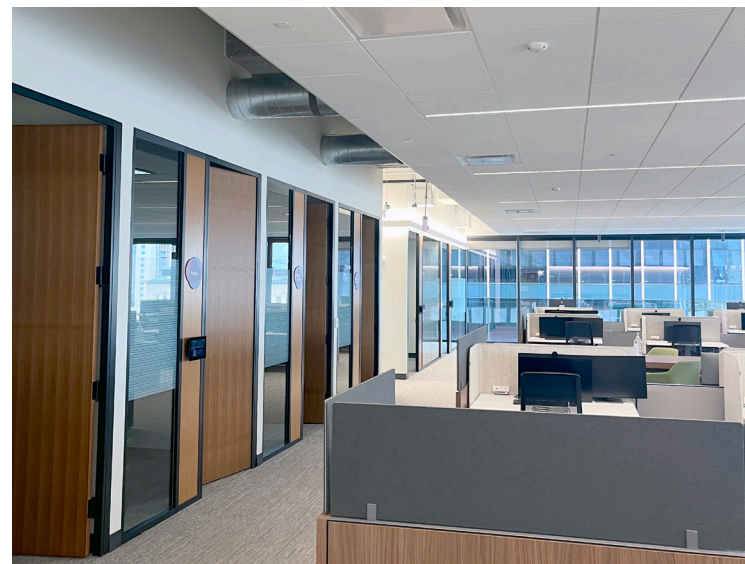
14-foot slab to slab ceiling heights provides flexible interior design

10-foot glass curtain wall optimizes interior light

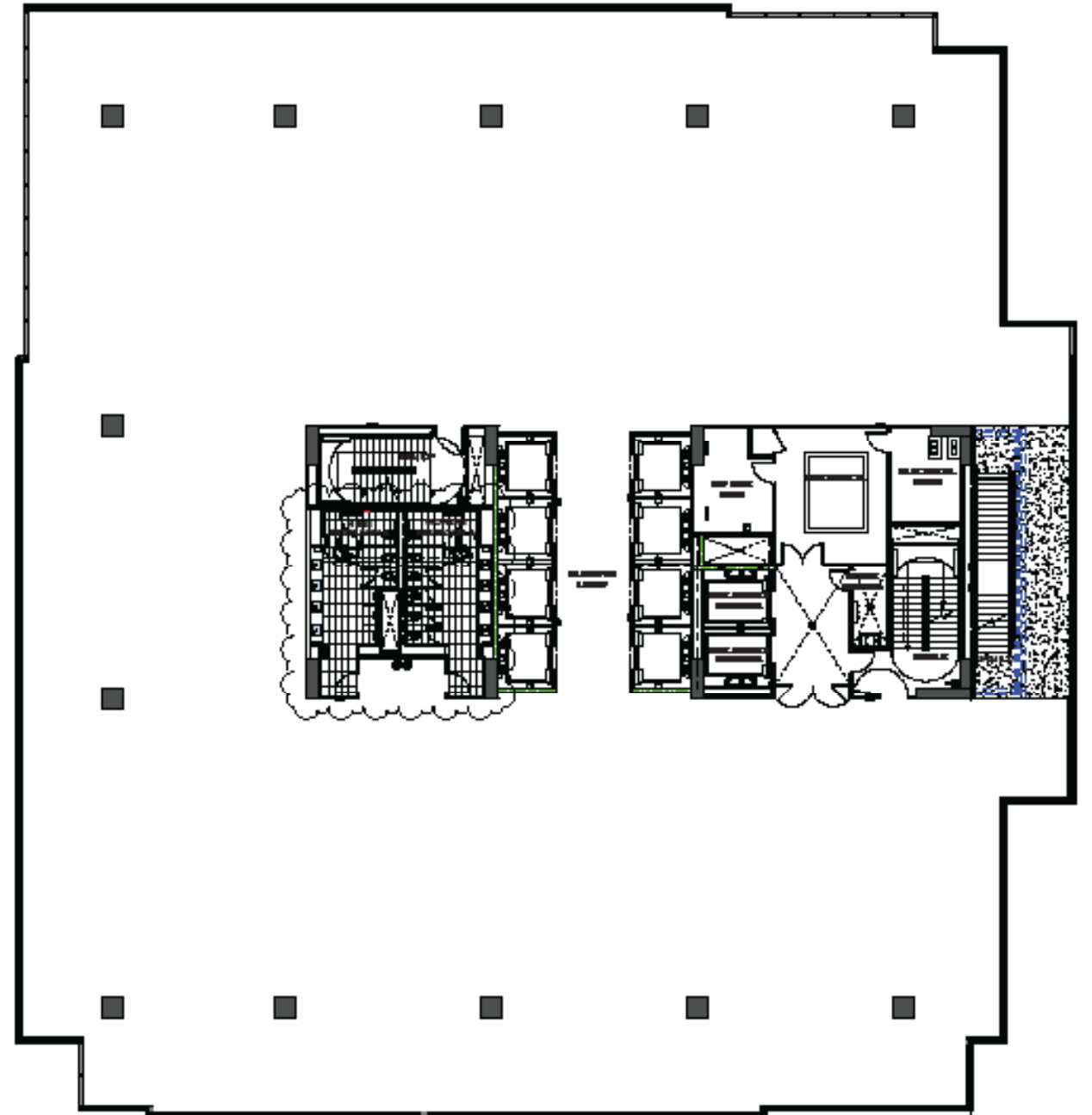
Unencumbered view corridors include western views of Georgia Tech, The Westside and stunning sunsets



Built-Out Tenant Space on Comparable Floor



## Typical Floor Plan



# 712 W Peachtree

712 W Peachtree Street, Atlanta, GA



# 712 W Peachtree

712 W Peachtree Street, Atlanta, GA

# Office For Sublease

23,418 - 164,399 SF



## Lincoln

**Alex Port**

404.931.9180

[aport@lpc.com](mailto:aport@lpc.com)

**Bo Jackson**

770.633.7006

[bjackson@lpc.com](mailto:bjackson@lpc.com)

3340 Peachtree Rd NE

Suite 2550

Atlanta, GA 30326

[www.lpc.com](http://www.lpc.com)