

# 1045 NATIONAL DR

NATOMAS

1045 National Drive  
Sacramento, CA



FOR LEASE

±23,535 SF

UNIT NUMBER 19



LEASED BY

Colliers

# 1045 NATIONAL DRIVE

NATOMAS

1045 National Drive  
Sacramento, CA

## BUILDING SPECIFICATIONS

Total Available ±23,535 SF

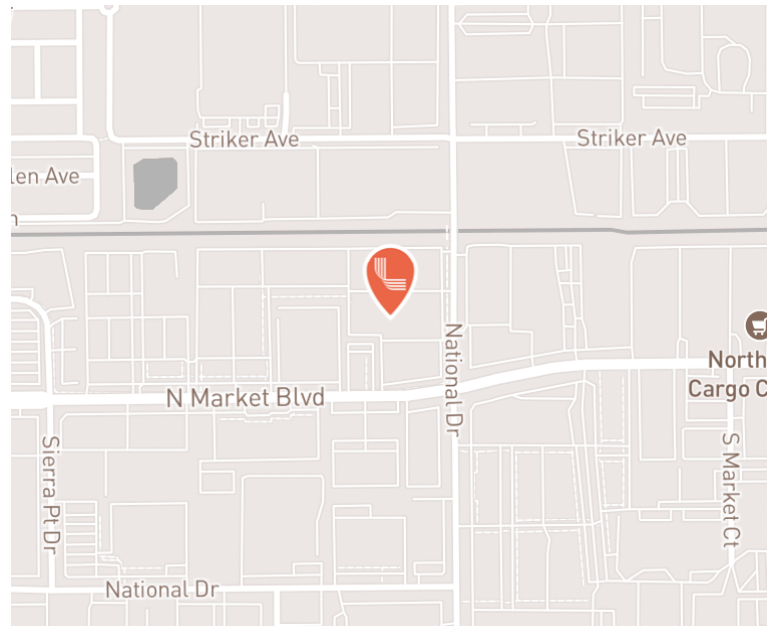
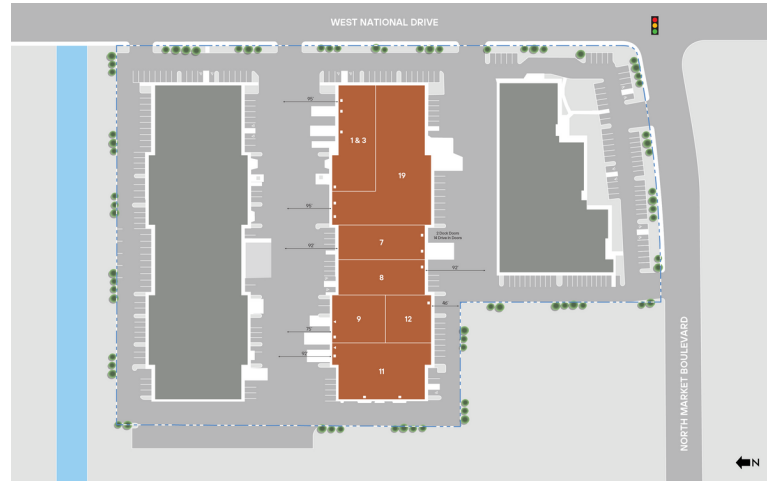
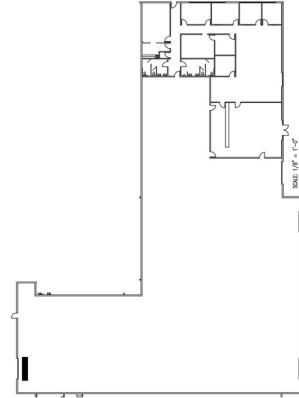
Office Area ±3,527 SF

Grade Level Doors 1 (additional can be added)

Clear Height ±19'

Construction Type Concrete Tilt-Up

Access Easy access to Interstates 5 & 80



FOR LEASE

±23,535 SF

**Matt Lofrano**

Matt.Lofrano@Colliers.com

(916) 563-3056

CA Lic. 01251712

**Mark Demetre, SIOR**

Mark.Demetre@Colliers.com

(916) 563-3010

CA Lic. 00852871

**Hannah Crandall**

Hannah.Crandall@Colliers.com

(916) 563-3093

CA Lic. 02043170



This is not an offer or acceptance of an offer to lease space. A lease will only be offered or made in a written agreement signed by landlord. No representation or warranty of any kind is made by landlord unless set forth in a written definitive lease executed by the landlord.