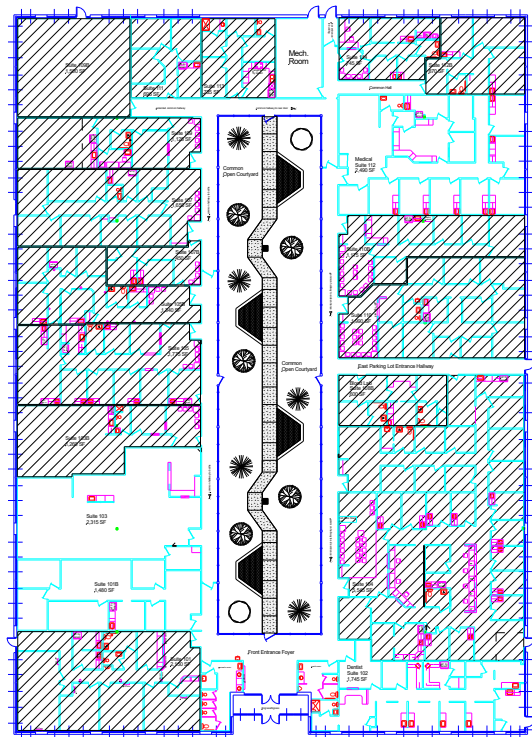


FOR LEASE Medical, Dental, & Office Spaces



Cicero Professional Building 6221 Route 31, Cicero

- **36,000 SF Medical & Office Spaces for Lease from 1,460 to 3,650 SF of Contiguous Space**
- **Dentist Space: 1,745 SF in Front of Building**
- **Convenient Location On Route 31 and Near Interstate 81**
- **6,000 SF Landscaped Courtyard**
- **Additional Rear Parking to be Added**
- **Fully Built-Out Medical Suites**
- **All Utilities and CAM included**
- **Prices Start at \$16.00 for Office Spaces and \$19.50 for Medical Spaces**



6724 Thompson Road • Syracuse, NY 13211

For more info contact:
Ed Rogers
Phone: 315-463-8684
Cell: 315-427-8510
E-mail: Ed@olivaco.com
www.olivaco.com

All information is believed to be accurate. We are not responsible for misstatements of facts, errors or omissions, prior sales, and changes of price or withdrawal from the market without notice.