

# PRIME RETAIL SPACES AVAILABLE ON SHAWNEE MISSION PARKWAY

*JOIN PVOLVE, PAUSE WELLNESS STUDIO, & STARBUCKS!*



SHAWNEE MISSION PKWY

# 4210-4220 SHAWNEE MISSION PARKWAY

AREA  
REAL ESTATE ADVISORS



THE FIELDSTON

THE FIELDSTON IS A PREMIER ACTIVE ADULT COMMUNITY FEATURING 209 MODERN APARTMENTS WITH AN EXPECTED 300+ ON-SITE RESIDENTS. THE PROJECT IS EXPECTED TO OPEN Q4 2025.



W 55<sup>TH</sup> ST

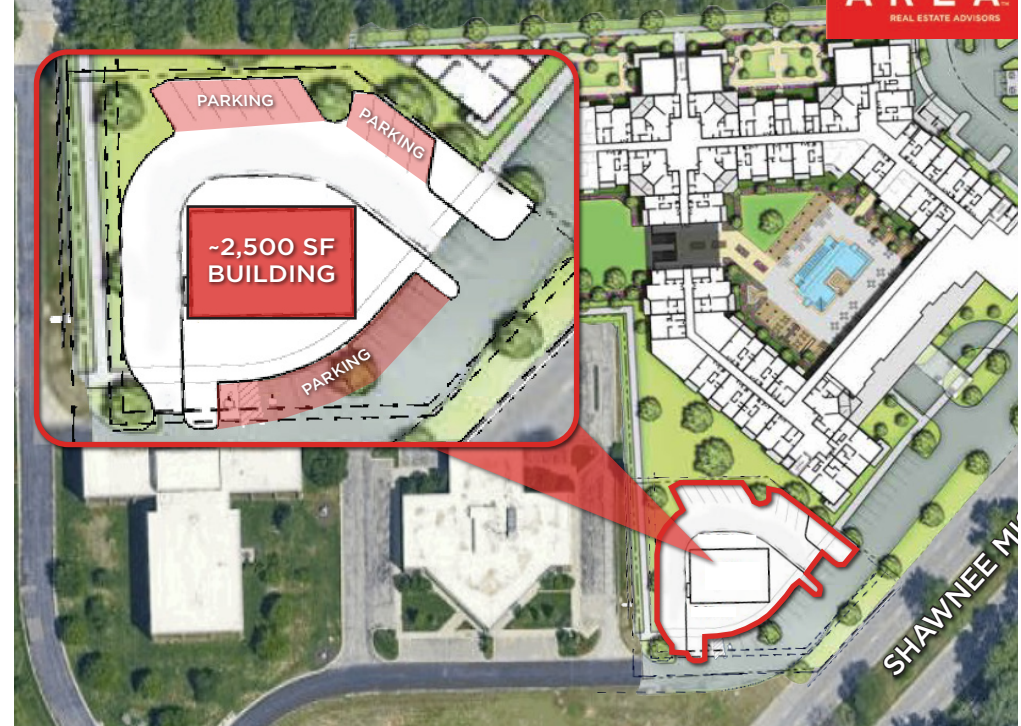
SHAWNEE MISSION PKWY  
39,000 CPD

2,050 SF RETAIL SPACE FOR LEASE

0.67 ACRE PAD SITE FOR SALE

DAYTIME WORKFORCE POPULATION OF 800+ FROM OFFICE BUILDINGS DIRECTLY ADJACENT IN THE ASSOCIATION

# AVAILABILITY



AREA  
REAL ESTATE ADVISORS

## **RETAIL SPACE FOR LEASE** *4210 SHAWNEE MISSION PARKWAY FAIRWAY, KS*

2,050 SF PLUS FLEX UP TO 2,967 SF WITH MEZZANINE

OPPORTUNITY FOR A PATIO

GREAT VISIBILITY AND ACCESS TO SHAWNEE MISSION  
PARKWAY WITH 39,000 CARS PER DAY

## **PAD SITE FOR SALE** *4220 SHAWNEE MISSION PARKWAY FAIRWAY, KS*

0.67 ACRES

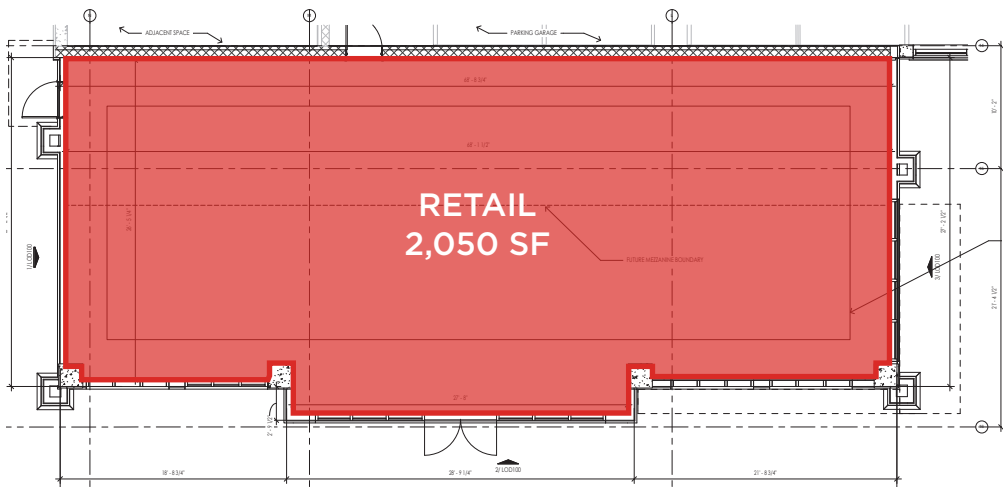
WILL ACCOMODATE A ~2,500 SF BUILDING

ALL UTILITIES ON SITE AND AVAILABLE FOR  
CONNECTION

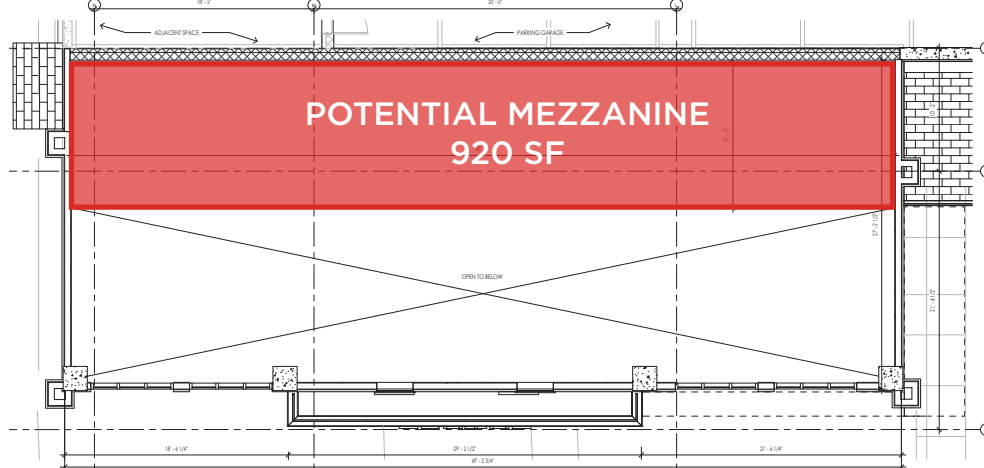
# RETAIL FLOOR PLAN



## LEVEL 1



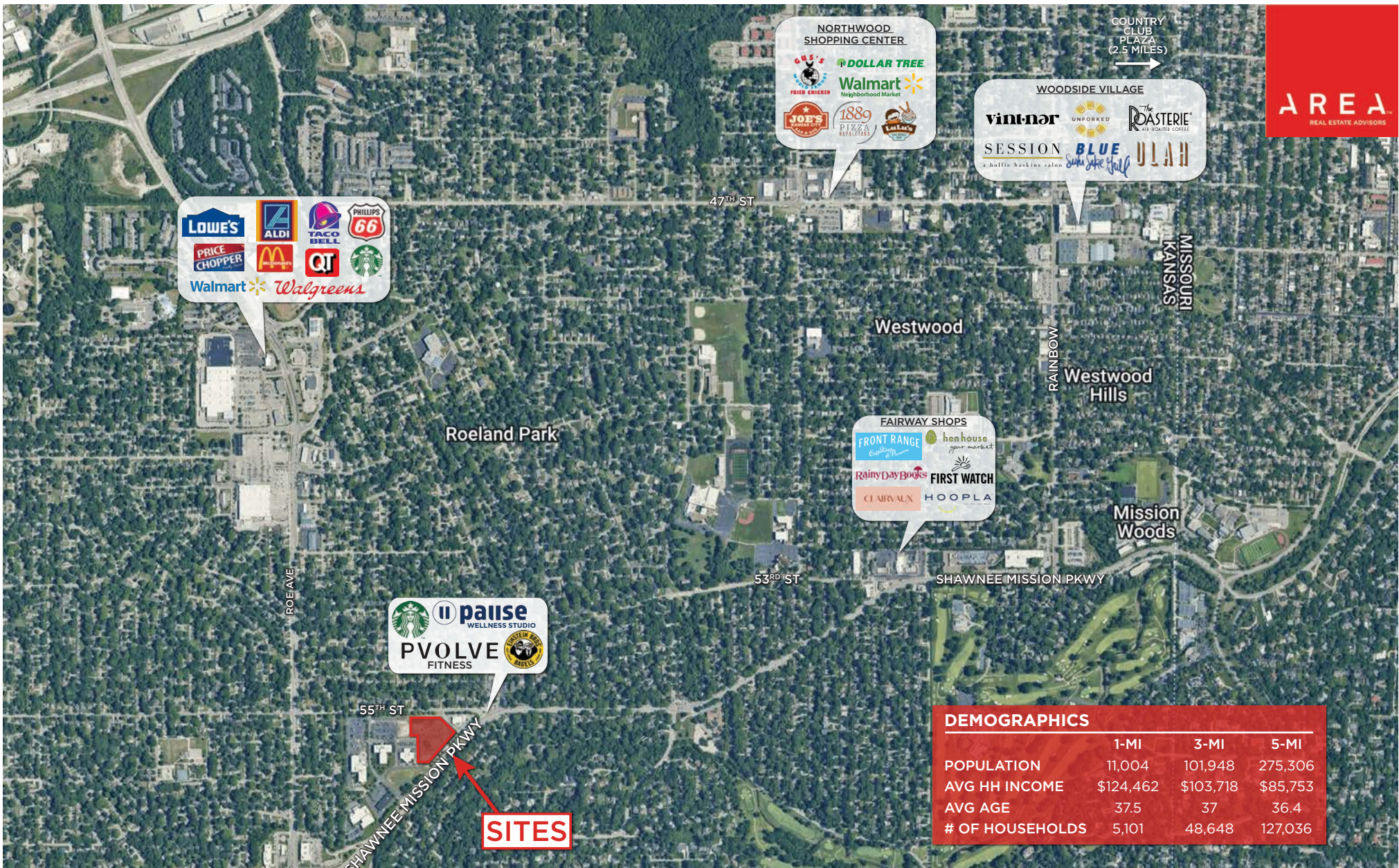
## LEVEL 2



## STOREFRONT



**AMPLE NATURAL LIGHT  
WITH 23' CEILINGS**



**AREA**  
REAL ESTATE ADVISORS

## MORE INFORMATION

**PATRICK KOHNLE**

**D** 816.895.4805

**E** PKOHNLE@OPENAREA.COM

**TIFFANY RUZICKA**

**D** 816.876.2513

**E** TRUZICKA@OPENAREA.COM